

MAP OF SURVEY

LOCATED in the NW 1/4 of Section 26, T. 30 S., R. 9 W., W.M.
in Douglas County, Oregon.

February 9, 2007

SURVEYED FOR: PLUM CREEK TIMBERLANDS, L.P.
P.O. BOX 1528
COOS BAY, OREGON 97420

FILED
Date: 2/15/2007 By: JP
This survey consists of:
Map: M152-35
Narrative:
Corner Rpt:

DOUGLAS COUNTY
SURVEYOR

REGISTERED
PROFESSIONAL
LAND SURVEYOR

David A. Edwards

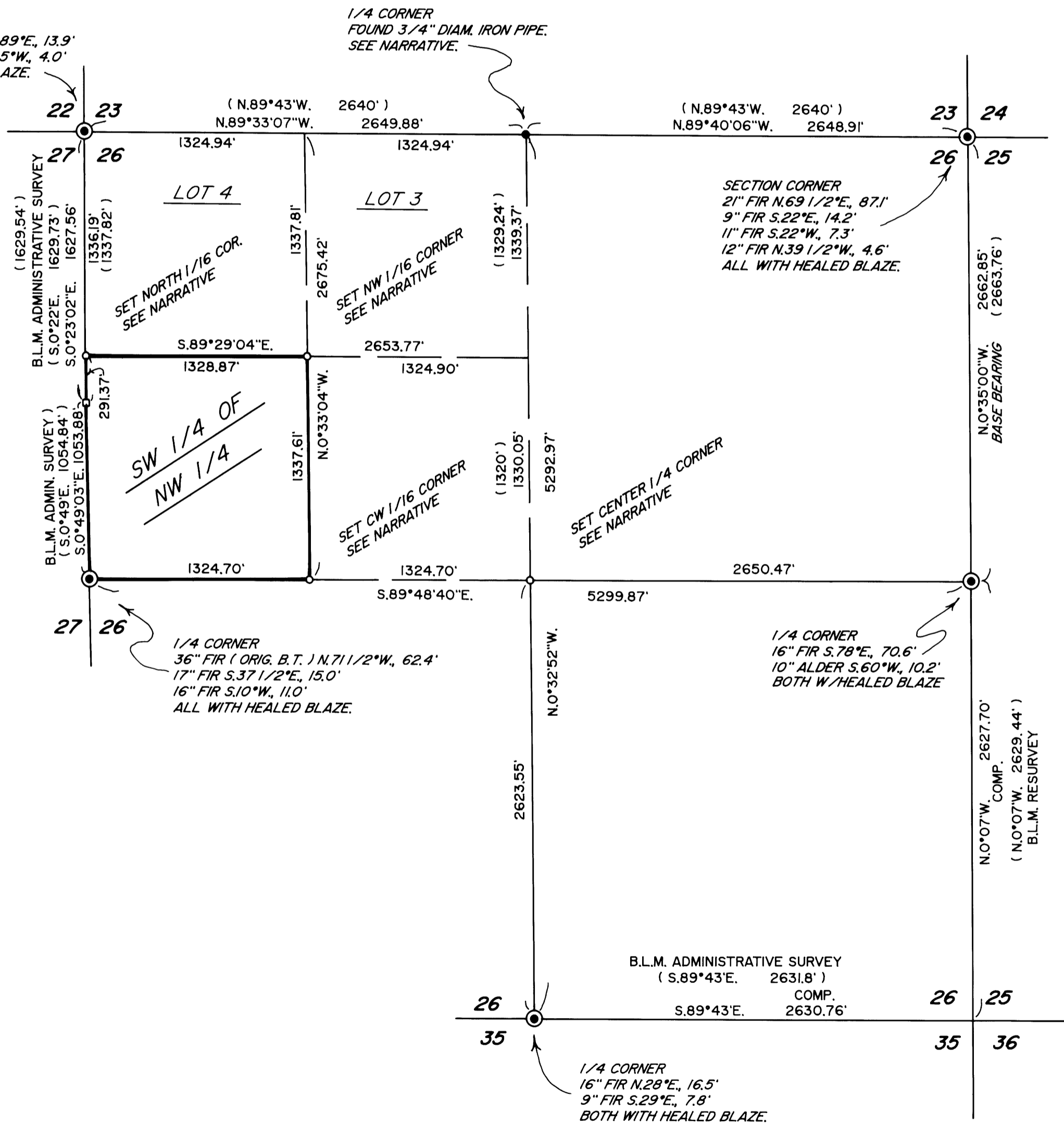
OREGON
JULY 26, 1988
DAVID A. EDWARDS
2339
RENEWS 12/31/07

SURVEYED BY: DAVID EDWARDS LAND SURVEYING
P.O. BOX 361
OAKLAND, OREGON 97462
PHONE: (541) 459-0512

SECTION CORNER
24" FIR (ORIG. B.T.) S.89°E., 13.9'
26" FIR (ORIG. B.T.) S.5°W., 4.0'
BOTH WITH HEALED BLAZE.

1/4 CORNER
FOUND 3/4" DIAM. IRON PIPE.
SEE NARRATIVE.

SECTION CORNER
21" FIR N.69 1/2°E., 87.1'
9" FIR S.22°E., 14.2'
11" FIR S.22°W., 7.3'
12" FIR N.39 1/2°W., 4.6'
ALL WITH HEALED BLAZE.



LEGEND

- ⊙ INDICATES DOUGLAS COUNTY SURVEYOR'S OFFICE BRASS CAP FOUND.
- INDICATES ORIGINAL LINE TREE FOUND. (SEE NARRATIVE).
- INDICATES 5/8" X 30" STEEL REBAR W/RED PLASTIC CAP MKD. "D.A. EDWARDS-LS 2339" SET.
- () DENOTES ORIGINAL G.L.O. SURVEY RECORD UNLESS NOTED OTHERWISE.
- INDICATES BOUNDARY BLAZED AND FLAGGED THIS SURVEY.

SCALE: 1" = 600' COMP. = COMPUTED.

BASIS OF BEARINGS: B.L.M. RESURVEY AS SHOWN.

NARRATIVE

THE PURPOSE OF THIS SURVEY IS TO MARK THE BOUNDARIES OF THE SW 1/4 OF THE NW 1/4 OF SECTION 26. A CLOSED TRAVERSE WAS RUN WHICH TIED IN THE CONTROLLING MONUMENTS AND THE SUBDIVISION OF THE SECTION COMPUTED. B.L.M. ADMINISTRATIVE SURVEYS ARE OF RECORD FOR THE SOUTH AND WEST LINES OF SECTION 26. FROM EVIDENCE ON THE GROUND IT IS CLEAR THAT B.L.M. ALSO SURVEYED THE NORTH LINE. BOUNDARY TAGS ARE FOUND BOTH EAST AND WEST FROM THE 3/4" DIAM. IRON PIPE AT THE NORTH 1/4 CORNER. SAID PIPE BEARS S.9°54'22"E., 2.74 FEET FROM MY COMPUTED MID-POINT. I ACCEPT THE IRON PIPE AS THE NORTH 1/4 CORNER BECAUSE THE POSITION IS WITHIN TOLERANCES FOR THE ERA IN WHICH IT WAS SET (PROBABLY ABOUT 1981). THE SUBJECT BOUNDARIES WERE MARKED BY 1/4 BLAZING TREES ON THE ADJOINER'S SIDE OF LINE ONLY AND BY HANGING LIBERAL AMOUNTS OF RED FLAGGING ALONG THE TRUE LINES. BEARING TREES SCRIBED ON THIS SURVEY ARE SCRIBED ACCORDING TO THE 1973 MANUAL, MEASURED TO A 20d NAIL SET SIDE-CENTER AT ROOT CROWN AND ARE SITUATED AS FOLLOWS:

FROM SAID FOUND NORTH 1/4 CORNER: AN 11" DIAM. FIR BEARS S. 11° E., 10.38 FEET.
A 15" DIAM. HEMLOCK BEARS N.44°W., 3.35 FEET.
SET 6 FOOT STEEL POSTS 2 FEET WEST AND 2 FEET EAST.

FROM THE FOUND ORIGINAL LINE TREE WHICH IS NOW A 43" DIAM., 30± TALL SNAG:
A 5" DIAM. FIR BEARS N. 7 1/2°W., 18.5 FEET.
A 5" DIAM. FIR BEARS S.37°W., 16.8 FEET. BOTH SCRIBED "AP S27 BT"
NO TREES AVAILABLE IN SECTION 26.

FROM THE SET NORTH 1/16 CORNER TO SECTIONS 26 AND 27:
A 4" DIAM. FIR BEARS N.31 1/2°E., 30.51 FEET.
A 7" DIAM. ALDER BEARS N.87°E., 12.84 FEET.
NO TREES AVAILABLE IN SECTION 27.

FROM THE SET NW 1/16 CORNER OF SECTION 26:
A 16" DIAM. FIR BEARS N.36°E., 13.7 FEET.
A 5" DIAM. FIR BEARS N.80°W., 29.4 FEET.

FROM THE SET CW 1/16 CORNER OF SECTION 26:
A 6" DIAM. FIR BEARS S.59°E., 1.84 FEET.
AN 8" DIAM. FIR BEARS S.79°W., 9.4 FEET.

FROM THE SET CENTER 1/4 CORNER OF SECTION 26:
A 12" DIAM. FIR BEARS N.44°E., 13.09 FEET.
A 9" DIAM. FIR BEARS S.81°E., 8J FEET.
A 7" DIAM. FIR BEARS S.72°W., 11.69 FEET.
A 9" DIAM. FIR BEARS N.73 1/2°W., 13.02 FEET.

FIELD CREW: BRANT MILLER AND ERIC SPRINKLE.

EQUIPMENT: NIKON TOTAL STATION.

COMPUTATIONS AND DRAFTING: DAVID EDWARDS.

MAP FILE M152-35

MAP FILE M152-35