

# MAP OF SURVEY

LOCATED in the North 1/2 of Section 28, T. 29 S., R. 3 W., W.M. in Douglas County, Oregon.

January 10, 2007

FILED

Date: 1-17-2007 By: JP  
 This survey consists of:  
 Map: M152-14  
 Narrative:  
 Corner Rpt:

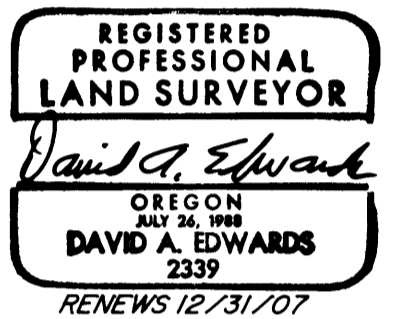
DOUGLAS COUNTY SURVEYOR

SURVEYED FOR: SENECA JONES TIMBER CO.  
 P.O. BOX 2129  
 ROSEBURG, OREGON 97470

AND

SILVER BUTTE TIMBER CO.  
 P.O. BOX 4  
 RIDDLE, OREGON 97469

SURVEYED BY: DAVID EDWARDS LAND SURVEYING  
 P.O. BOX 361  
 OAKLAND, OREGON 97462  
 PHONE: (541) 459-0512



## LEGEND

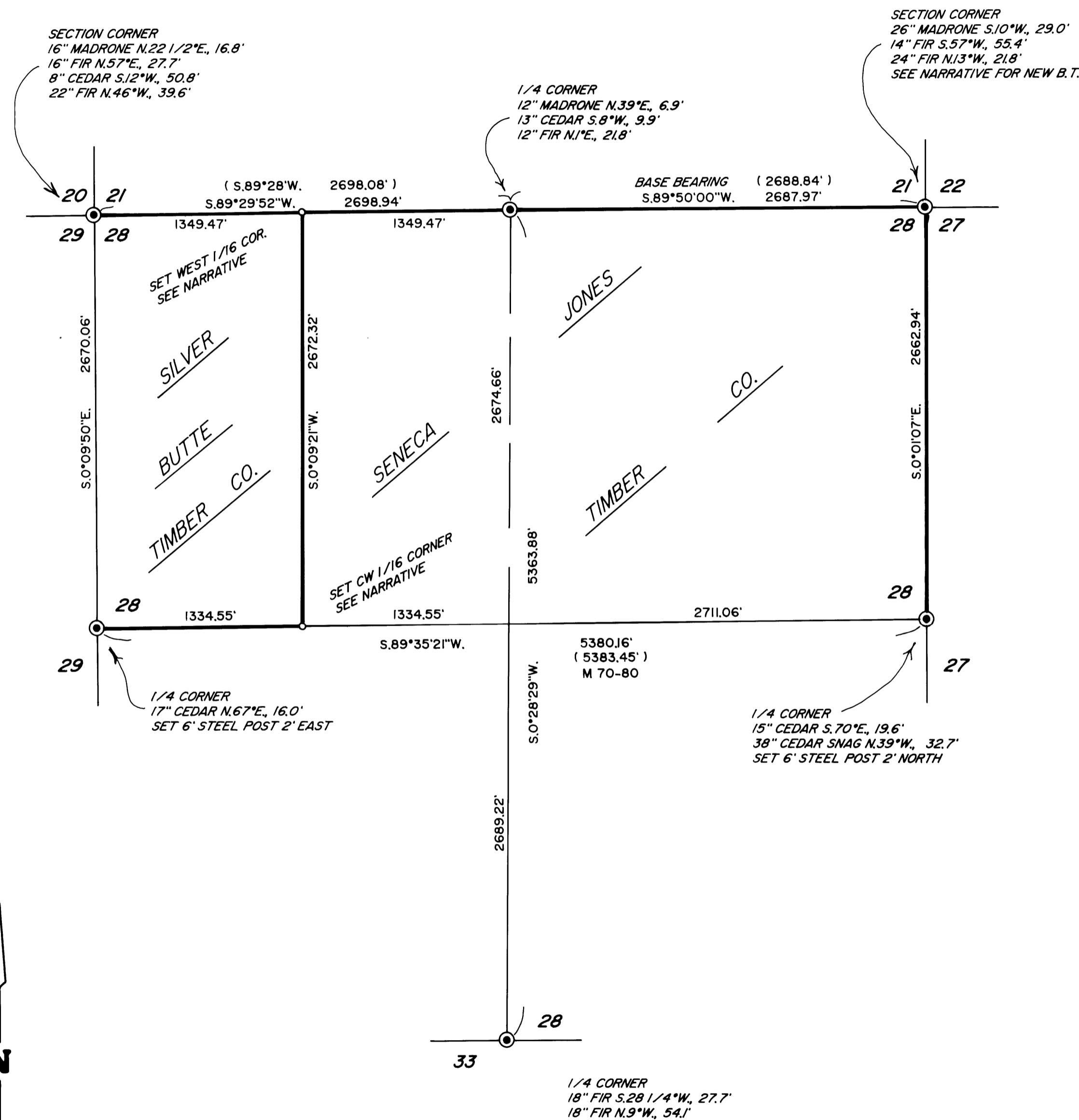
- INDICATES B.L.M. OR D.C.S. BRASS CAP FOUND EXCEPT WHERE NOTED.
  - INDICATES 5/8" X 30" STEEL REBAR WITH 2 1/2" DIAM. ALUMINUM CAP SET. CAPS ARE MARKED PER THE 1973 MANUAL AND WITH "LS 2339" AND "2007".
  - ( ) DENOTES B.L.M. RECORD DATA UNLESS NOTED OTHERWISE.
- SCALE: 1" = 600'
- BASIS OF BEARINGS: B.L.M. RESURVEY AS SHOWN.

## NARRATIVE

THE PURPOSE OF THIS SURVEY IS TO MARK THOSE BOUNDARIES SHOWN HEREON AS BOLD LINES. CONTROLLING MONUMENTS WERE TIED IN AND THE SUBDIVISION OF SECTION 28 COMPUTED. RANDOM TRAVERSE POINTS NEAR THE SUBJECT BOUNDARIES WERE THEN OFFSET TO TRUE LINE. THE TRUE BOUNDARIES WERE MARKED BY BLAZING TREES ON EACH SIDE OF LINE, BY SETTING 6 FOOT STEEL POSTS ALONG LINE AT INTERVALS OF 200 FEET OR LESS AND BY HANGING LIBERAL AMOUNTS OF RED FLAGGING ALONG THE TRUE LINE. BEARING TREES SCRIBED ON THIS SURVEY ARE SCRIBED ACCORDING TO THE 1973 B.L.M. MANUAL, MEASURED TO CENTER OF TREE AT ROOT CROWN AND ARE SITUATED AS FOLLOWS:

- AT THE WEST 1/16 CORNER TO SECTIONS 21 AND 28:
  - A 5" DIAM. CEDAR BEARS S.11°W., 9.1 FEET.
  - A 7" DIAM. PINE BEARS N.89 1/2°W., 15.45 FEET.
- AT THE CW 1/16 CORNER OF SECTION 28:
  - A 4" DIAM. CEDAR BEARS N.89°E., 24.5 FEET.
  - A 12" DIAM. FIR BEARS S.85°W., 24.5 FEET.
- AT THE NE CORNER OF SECTION 28:
  - A 7" DIAM. FIR BEARS S.39°E., 10.3 FEET.

FIELD CREW: BRANT MILLER AND ERIC SPRINKLE.  
 EQUIPMENT: NIKON TOTAL STATION.  
 COMPS. AND DRAFTING: DAVID EDWARDS.



MAP FILE M152-14

MAP FILE M152-14