

LONE ROCK TIMBER LAND CO.

T. 29 S., R. 8 W., W.M. SECTION 16 & THE NE 1/4 OF SECTION 21

DOUGLAS COUNTY, OREGON

DATE: SEPT. 2006

SURVEYED: BY LONE ROCK TIMBER MANAGEMENT CO.

PO BOX 1127 ROSEBURG, OREGON 97470

TRACT NAME: NUNES TRACT

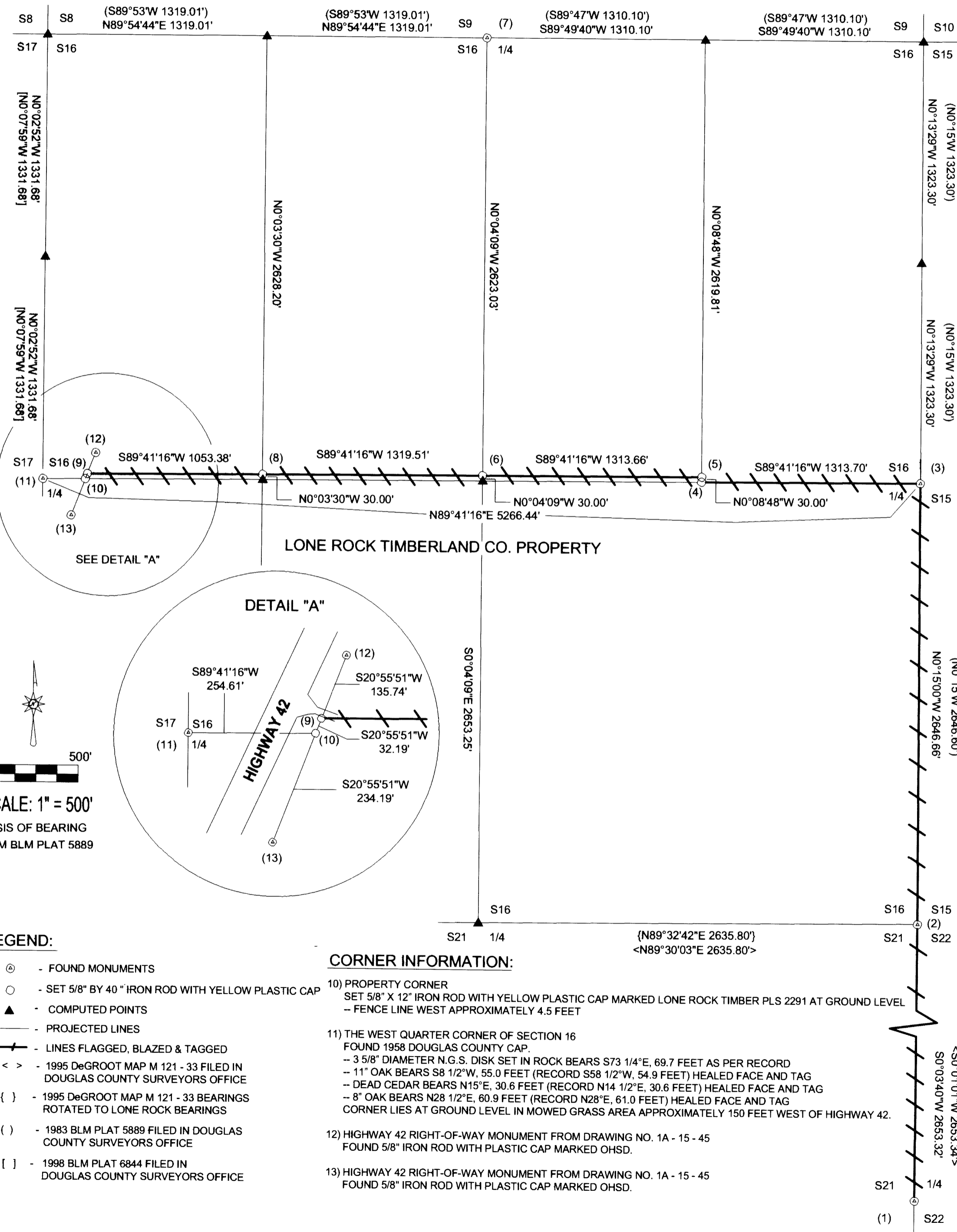
FILED
Date: 10-3-2006 By: J.C.
This survey consists of:
Map: M151-47
Narrative:
Corner Plat:
DOUGLAS COUNTY
SURVEYOR

NARRATIVE:

THIS SURVEY WAS CONDUCTED TO ESTABLISH LINES AND PROPERTY CORNERS FOR FOREST MANAGEMENT AND ACCESS PURPOSES. WE INITIATED THIS SURVEY AT THE EAST 1/4 OF SECTION 16 AND RAN A RANDOM CLOSED LOOP TRAVERSE SOUTHERLY ALONG THE SECTION LINE TO THE SE CORNER OF SECTION 16 AND THE EAST 1/4 OF SECTION 21. DEGROOT SURVEYED THE NE 1/4 OF SECTION 21 FOR LONE ROCK TIMBER IN 1995. WE ROTATED DEGROOT'S SURVEY TO OUR BEARINGS ALONG THE SECTION LINE BETWEEN THE NE CORNER AND EAST 1/4 CORNER OF SECTION 21 TO ESTABLISH A COMPUTED POSITION OF THE QUARTER CORNER BETWEEN SECTIONS 16 AND 21 FOR THIS SURVEY. WE THEN RETURNED TO THE EAST 1/4 CORNER OF SECTION 16 AND RAN A RANDOM TRAVERSE LINE TO THE WEST 1/4 OF SECTION 16 AND TYING IN R/W MONUMENTS ON THE EAST EDGE OF HIGHWAY 42. WE THEN RAN A CLOSED LOOP TRAVERSE NORTHEASTERLY FROM THE WEST 1/4 OF SECTION 16 TO THE NORTH 1/4 OF SECTION 16. WE ESTABLISHED GPS CONTROL HUBS AT THE ENDS OF THESE TRAVERSES. WE RAN A GPS STATIC SURVEY OF POINTS OF OUR ENTIRE TRAVERSE NETWORK TO CHECK OUR SURVEY CLOSURE. I THEN USED BLM 1982 AND 1995 SURVEY RECORD DISTANCES FROM MY SURVEY POSITIONS OF THE EAST, NORTH AND WEST QUARTER CORNERS TO COMPUTE POSITIONS OF THE NORTHEAST AND NORTHWEST CORNERS OF SECTION 16. I THEN COMPUTED THE SUBDIVISION OF SECTION 16 TO SET PROPERTY CORNERS AT THE CENTER EAST 1/16 OF SECTION 16 AND ON THE NORTH SIDE OF A 30 FOOT R/W WESTERLY TO THE WEST R/W BOUNDARY OF HIGHWAY 42 AS SHOWN ON THIS MAP. WE MARKED THE NORTH AND EAST PROPERTY LINES OF LONE ROCK'S PROPERTY AS SHOWN ON THIS MAP. THE SOUTH DEED PROPERTY LINE OF THE 30 FOOT ACCESS STRIP FROM CORNER 10 TO THE COMPUTED CENTERWEST 1/16 HAS A MEANDERING GOOD CONDITION FENCE LINE FROM 17 TO 28 FEET SOUTH OF THE NORTH PROPERTY LINE BLAZED AND PAINTED. THIS SURVEY WAS DONE WITH A NIKON 520 TOTAL STATION AND TRIMBLE 4400, 4000SSE AND 40000SE GPS INSTRUMENTS WITH GARY ANGIOLET, JASON MOON, AND IGNACIO ROMAN ASSISTING ME.

CORNER INFORMATION:

- THE EAST QUARTER CORNER FOR SECTION 21
FOUND 1958 DOUGLAS COUNTY BRASS CAP.
-- 22" TALL CEDAR STUMP BEARS N57°E, 20.1 FEET (RECORD N57 1/2°E, 20.8 FEET) HEALED DOUBLE FACE AND TAG
-- 29" ROTTEN STUMP BEARS N21 3/4°E, 12.4 FEET (RECORD N25°E, 12.7 FEET) CHOPPED OUT FACE AND TAG
-- 10" PINE BEARS N40°W, 28.9 FEET (RECORD N39°W, 28.9 FEET) HEALED DOUBLE FACE AND TAG
-- 25" DOUGLAS FIR BEARS S57 1/2°W, 34.1 FEET (RECORD S58°W, 33.8 FEET) HEALED FACE AND TAG
CORNER SITS AT SOUTHWEST CORNER OF LARGE CLEAR-CUT APPROXIMATELY 250 FEET WEST OF ROAD.
- THE SOUTHEAST SECTION CORNER OF SECTION 16
FOUND 1958 DOUGLAS COUNTY CAP.
-- 65" FIR STUMP BEARS S8°E, 6.6 FEET AS PER RECORD
-- 28" MADRONE BEARS N70°E, 30.4 FEET HEALED FACE AND TAG
-- 15" TALL FIR SNAG BEARS N21°E, 68.0 VISIBLE AXE WORK
-- 20" CEDAR BEARS N82°E, 31.7 FEET AS PER RECORD, HEALED FACE AND TAG
-- 22" FIR BEARS S17°W, 29 FEET AS PER RECORD, HEALED FACE AND TAG
-- 14" FIR BEARS S18 1/2°W, 16.0 FEET AS PER RECORD, HEALED FACE AND TAG
-- 24" FIR TALL STUMP BEARS S33 1/2°E, 120.0 FEET, HEALED FACE AND TAG
-- 1" IRON PIPE BEARS N7 1/2°W, 14.3 FEET AS PER RECORD
CORNERS LIES AT WEST EDGE OF NEW CLEAR-CUT.
- THE EAST QUARTER CORNER OF SECTION 16
FOUND 1982 BLM BRASS CAP.
-- 18" DOUGLAS FIR BEARS S85°E, 13.2 FEET AS PER RECORD, HEALED FACE AND TAG
-- 19" DOUGLAS FIR BEARS N24 1/2°W, 19.8 FEET AS PER RECORD, HEALED FACE AND TAG
CORNER SITS ON STEEP EAST FACING SLOPE AT WEST EDGE OF CLEAR-CUT. CLEAR-CUT RUNS NORTH AND SOUTH FROM CORNER.
- THE CENTER EAST 1/16 CORNER OF SECTION 16
SET 5/8" X 40" IRON ROD WITH YELLOW PLASTIC CAP MARKED LONE ROCK TIMBER PLS 2291.
-- 10" DOUGLAS FIR BEARS S27°W, 10.1 FEET, WE SCRIBE B.T. AND TAG
-- 5/8" IRON ROD BEARS N0°08'48"W, 30.0 FEET
CORNER SITS 30 FEET SOUTH OF OLD 4-WHEELER TRAIL. CORNER IS 0.2 FEET ABOVE GROUND.
- PROPERTY CORNER
SET 5/8" X 40" IRON ROD WITH YELLOW PLASTIC CAP MARKED LONE ROCK TIMBER PLS 2291.
-- 12" DOUGLAS FIR BEARS S33 3/4°W, 24.4 FEET, WE SCRIBE B.T. AND TAG
-- 5/8" IRON ROD BEARS S0°08'48"W, 30.0 FEET
CORNER SITS AT GROUND LEVEL AT SOUTH EDGE OF OLD 4-WHEELER TRAIL.
- PROPERTY CORNER
SET 5/8" X 40" IRON ROD WITH YELLOW PLASTIC CAP MARKED LONE ROCK TIMBER PLS 2291.
-- 7" DOUGLAS FIR BEARS N55 1/2°W, 4.6 FEET, WE SCRIBE B.T. AND TAG
-- 17" DOUGLAS FIR BEARS S88 3/4°E, 73.1 FEET, WE SCRIBE B.T. AND TAG
CORNER LIES APPROXIMATELY 7.0 FEET SOUTH OF EAST-WEST FENCE LINE AT BASE OF 20" DOUGLAS FIR. CORNER IS 0.6 FEET ABOVE GROUND.
- THE NORTH QUARTER CORNER OF SECTION 16
FOUND 1958 DOUGLAS COUNTY CAP.
-- 27" FIR STUMP BEARS N31 1/2°W, 77.5 FEET (RECORD N31°W, 77.4 FEET) HEALED FACE AND TAG
-- 31" FIR STUMP BEARS N47 3/4°E, 23.3 FEET (RECORD N48°E, 22.7 FEET) HEALED FACE AND TAG
-- ROTTEN STUMP BEARS S76°W, 21.5 FEET (RECORD S76 1/4°W, 21.5 FEET)
-- 30" TALL STUMP BEARS S35 3/4°E, 22.2 FEET (RECORD S34 1/2°E, 21.6 FEET) HEALED BLAZES AND TAG
CORNER LIES APPROXIMATELY 15 FEET SOUTH OF SOUTH EDGE OF BRUSHING FOR POWER LINE RIGHT-OF-WAY AND APPROXIMATELY 15.0 FEET NORTH OF PAVED ROAD.
- PROPERTY CORNER
SET 5/8" X 40" IRON ROD WITH YELLOW PLASTIC CAP MARKED LONE ROCK TIMBER PLS 2291.
-- 9" OAK BEARS N71 3/4°E, 14.4 FEET, WE SCRIBE B.T. AND TAG
-- 6" OAK BEARS N13 2/4°W, 5.8 FEET, WE SCRIBE B.T. AND TAG
CORNER LIES 0.3 FEET ABOVE GROUND AND APPROXIMATELY 19 FEET NORTH OF EAST-WEST FENCE LINE. PUT METAL FENCE POST APPROXIMATELY 0.5 FEET EAST OF CORNER.
- PROPERTY CORNER
SET 5/8" X 16" IRON ROD WITH YELLOW PLASTIC CAP MARKED LONE ROCK TIMBER PLS 2291 0.3 FEET ABOVE GROUND
-- FENCE CORNER BEARS N55°W, 5.5 FEET
CORNER SET IN NORTH FACE OF ROCK OUT CROPPING AT EASTERLY RIGHT-OF-WAY OF HIGHWAY 42.



MAP FILE M151-47

REGISTERED
PROFESSIONAL
LAND SURVEYOR
Kenn W. Hoffine
OREGON
JULY 18, 1987
KEN W. HOFFINE
229

EXPIRES 6-30-07

MAP FILE M151-47