

**SURVEY FOR
SENECA JONES TIMBER COMPANY
NORTH 1/2 OF SECTION 8,
TOWNSHIP 22 SOUTH, RANGE 7 WEST, W.M.
DOUGLAS COUNTY, OREGON
AUGUST 13, 2006**

NARRATIVE

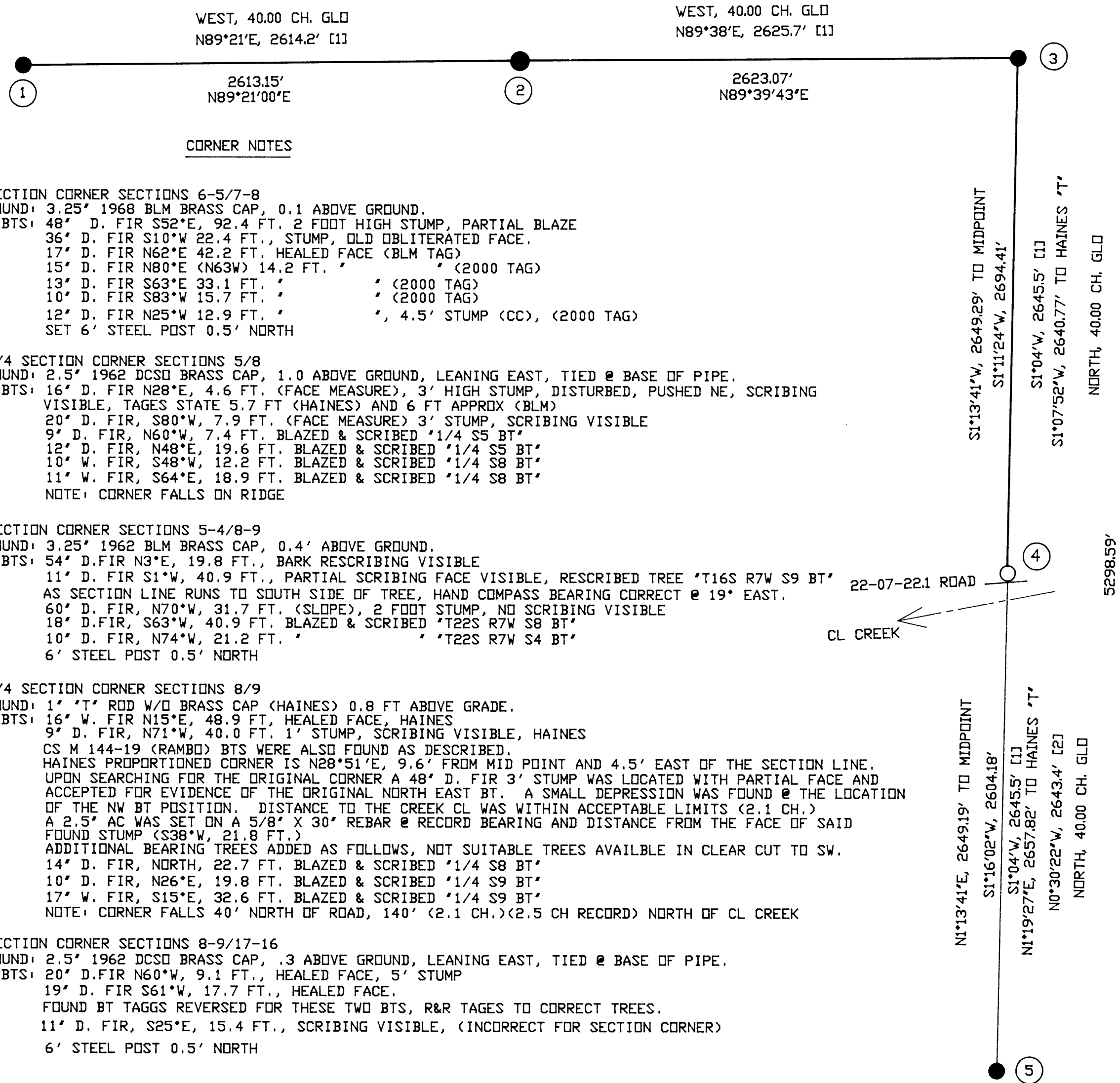
THE PURPOSE OF THIS SURVEY WAS TO MARK SOME OF THE PROPERTY LINES IN THE N 1/2 OF SECTION 8, TOWNSHIP 22 SOUTH, RANGE 7 WEST, W.M. AND TO REMONUMENT THE EAST 1/4 CORNER OF SAID SECTION FOR SENECA JONES TIMBER COMPANY.

MY BASIS OF BEARING FOR THIS SURVEY IS BETWEEN THE N 1/4 CORNER AND THE NW SECTION CORNER OF SAID SECTION 8 AS PER CS #M27-16 (HAINES). THE E 1/4 CORNER WAS REMONUMENTED FROM ORIGINAL GLO (BYARS 1872) EVIDENCE.

THIS SURVEY WAS PERFORMED USING A NIKON 520 TO MEASURE ANGLES AND DISTANCES. BEARING TREES REFERENCED ON THIS SURVEY WERE MEASURED WITH A 50' DIAMETER TAPE TO THE SIDE CENTER (SPIKED) OF THE TREE AND HAND COMPASS TO THE CENTER.

FILED
Date: 9-25-2006 By: JC
This survey consists of:
Map: M151-45
Narrative: _____
Corner Rpt: _____
DOUGLAS COUNTY
SURVEYOR

MAP FILE M151-45



CORNER NOTES

- (1) SECTION CORNER SECTIONS 6-5/7-8
FOUND: 3.25" 1968 BLM BRASS CAP, 0.1 ABOVE GROUND.
BTS: 48" D. FIR S52°E, 92.4 FT., 2 FOOT HIGH STUMP, PARTIAL BLAZE
36" D. FIR S10°W 22.4 FT., STUMP, OLD OBLITERATED FACE.
17" D. FIR N62°E 42.2 FT., HEALED FACE (BLM TAG)
15" D. FIR N80°E (N63W) 14.2 FT. " (2000 TAG)
13" D. FIR S63°E 33.1 FT. " (2000 TAG)
10" D. FIR S83°W 15.7 FT. " (2000 TAG)
12" D. FIR N25°W 12.9 FT. " , 4.5' STUMP (CC), (2000 TAG)
SET 6' STEEL POST 0.5' NORTH
- (2) 1/4 SECTION CORNER SECTIONS 5/8
FOUND: 2.5" 1962 DCSD BRASS CAP, 1.0 ABOVE GROUND, LEANING EAST, TIED @ BASE OF PIPE.
BTS: 16" D. FIR N28°E, 4.6 FT. (FACE MEASURE), 3' HIGH STUMP, DISTURBED, PUSHED NE, SCRIBING VISIBLE, TAGS STATE 5.7 FT (CHAINES) AND 6 FT APPROX (BLM)
20" D. FIR, S80°W, 7.9 FT. (FACE MEASURE) 3' STUMP, SCRIBING VISIBLE
9" D. FIR, N60°W, 7.4 FT. BLAZED & SCRIBED '1/4 S5 BT'
12" D. FIR, N48°E, 19.6 FT. BLAZED & SCRIBED '1/4 S5 BT'
10" W. FIR, S48°W, 12.2 FT. BLAZED & SCRIBED '1/4 S8 BT'
11" W. FIR, S64°E, 18.9 FT. BLAZED & SCRIBED '1/4 S8 BT'
NOTE: CORNER FALLS ON RIDGE
- (3) SECTION CORNER SECTIONS 5-4/8-9
FOUND: 3.25" 1962 BLM BRASS CAP, 0.4' ABOVE GROUND.
BTS: 54" D. FIR N3°E, 19.8 FT., BARK RESCRIBING VISIBLE
11" D. FIR S1°W, 40.9 FT., PARTIAL SCRIBING FACE VISIBLE, RESCRIBED TREE 'T16S R7W S9 BT'
AS SECTION LINE RUNS TO SOUTH SIDE OF TREE, HAND COMPASS BEARING CORRECT @ 19° EAST.
60" D. FIR, N70°W, 31.7 FT. (SLOPE), 2 FOOT STUMP, NO SCRIBING VISIBLE
18" D. FIR, S63°W, 40.9 FT. BLAZED & SCRIBED 'T22S R7W S8 BT'
10" D. FIR, N74°W, 21.2 FT. " 'T22S R7W S4 BT'
6' STEEL POST 0.5' NORTH
- (4) 1/4 SECTION CORNER SECTIONS 8/9
FOUND: 1" 'T' ROD W/O BRASS CAP (HAINES) 0.8 FT ABOVE GRADE.
BTS: 16" W. FIR N15°E, 48.9 FT., HEALED FACE, HAINES
9" D. FIR, N71°W, 40.0 FT., 1' STUMP, SCRIBING VISIBLE, HAINES
CS M 144-19 (RAMBO) BTS WERE ALSO FOUND AS DESCRIBED.
HAINES PROPORTIONED CORNER IS N28°51'E, 9.6' FROM MID POINT AND 4.5' EAST OF THE SECTION LINE.
UPON SEARCHING FOR THE ORIGINAL CORNER A 48" D. FIR 3' STUMP WAS LOCATED WITH PARTIAL FACE AND ACCEPTED FOR EVIDENCE OF THE ORIGINAL NORTH EAST BT. A SMALL DEPRESSION WAS FOUND @ THE LOCATION OF THE NW BT POSITION. DISTANCE TO THE CREEK CL WAS WITHIN ACCEPTABLE LIMITS (2.1 CH.)
A 2.5" AC WAS SET ON A 5/8" X 30" REBAR @ RECORD BEARING AND DISTANCE FROM THE FACE OF SAID FOUND STUMP (S38°W, 21.8 FT.)
ADDITIONAL BEARING TREES ADDED AS FOLLOWS, NOT SUITABLE TREES AVAILBLE IN CLEAR CUT TO SW.
14" D. FIR, NORTH, 22.7 FT. BLAZED & SCRIBED '1/4 S8 BT'
10" D. FIR, N26°E, 19.8 FT. BLAZED & SCRIBED '1/4 S9 BT'
17" W. FIR, S15°E, 32.6 FT. BLAZED & SCRIBED '1/4 S9 BT'
NOTE: CORNER FALLS 40' NORTH OF ROAD, 140' (2.1 CH.) (2.5 CH RECORD) NORTH OF CL CREEK
- (5) SECTION CORNER SECTIONS 8-9/17-16
FOUND: 2.5" 1962 DCSD BRASS CAP, .3 ABOVE GROUND, LEANING EAST, TIED @ BASE OF PIPE.
BTS: 20" D. FIR N60°W, 9.1 FT., HEALED FACE, 5' STUMP
19" D. FIR S61°W, 17.7 FT., HEALED FACE.
FOUND BT TAGGS REVERSED FOR THESE TWO BTS, R&R TAGES TO CORRECT TREES.
11" D. FIR, S25°E, 15.4 FT., SCRIBING VISIBLE, (INCORRECT FOR SECTION CORNER)
6' STEEL POST 0.5' NORTH

LEGEND

- = CORNERS FOUND AS NOTED
- = SET 5/8" X 30" REBAR WITH 2.5" ALUMINIUM CAP STAMPED 'NTCI LS 2603'

REFERENCES

- [1] = CS #M 27-16, 1963, HAINES
- [2] = CS #M 144-19, 2004, RAMBO

Scale: 1"=500 ft
0 500' 1000'



REGISTERED
PROFESSIONAL
LAND SURVEYOR
Harvey M. Christensen
OREGON
MARCH 16, 1993
HARVEY M. CHRISTENSEN
2603



LICENSE RENEWAL DATE DEC 31, 2007

NORTHWEST TIMBERLAND CONSULTING, INC.
4680 BRIARS - EUGENE, OR 97404-1113
PHONE OR FAX (541) 461-4076

MAP # 22 07 08 900

MAP FILE M151-45