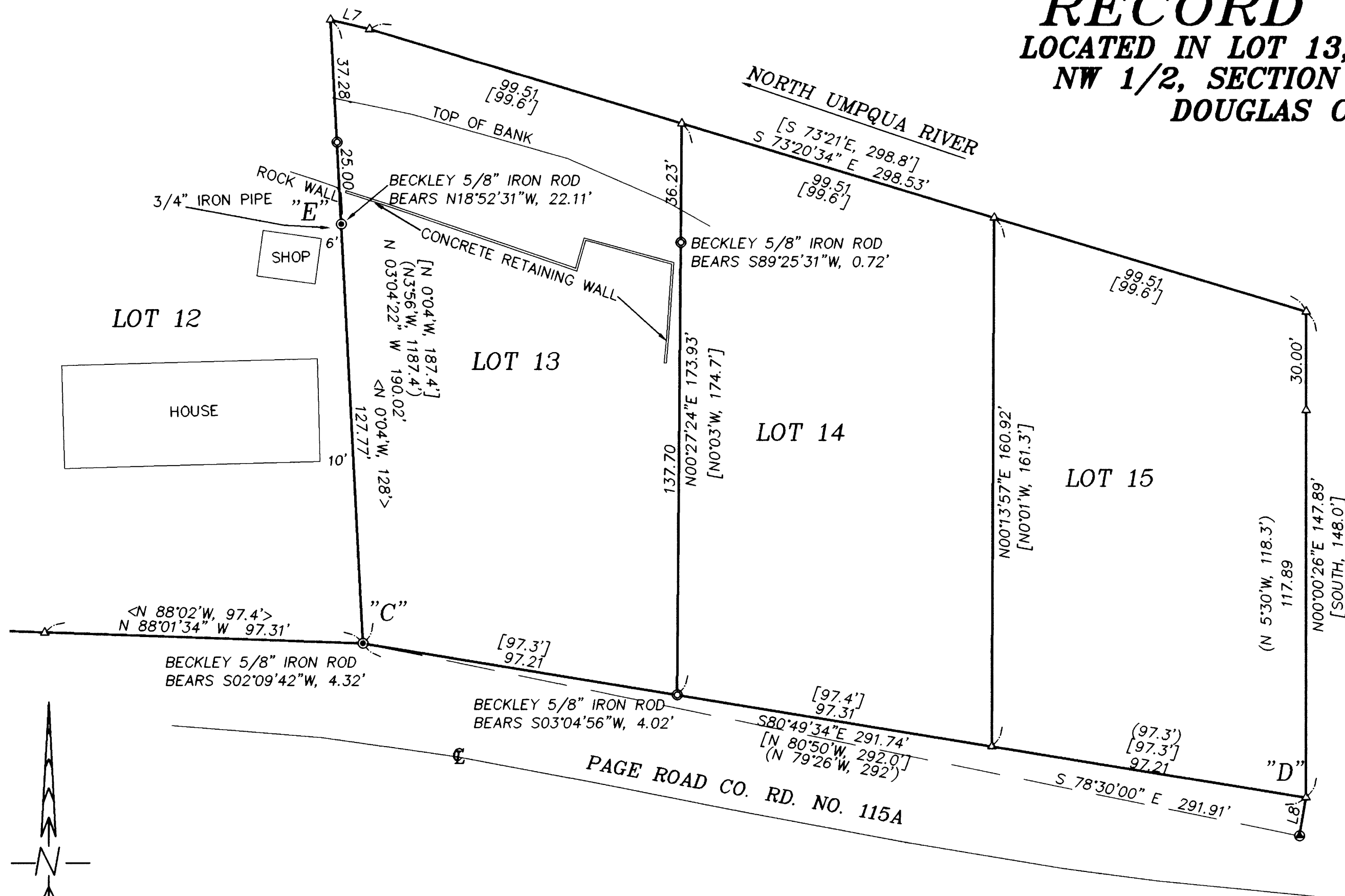


# RECORD OF SURVEY

LOCATED IN LOT 13, RIO VERDE SUBDIVISION  
NW 1/2, SECTION 30, T.26S., R.5W., W.M.  
DOUGLAS COUNTY, OREGON

FILED  
Date: 9-15-2006 By: MW  
This survey consists of:  
Map: M 151-42  
Narrative: \_\_\_\_\_  
Corner Rpt: \_\_\_\_\_  
DOUGLAS COUNTY  
SURVEYOR



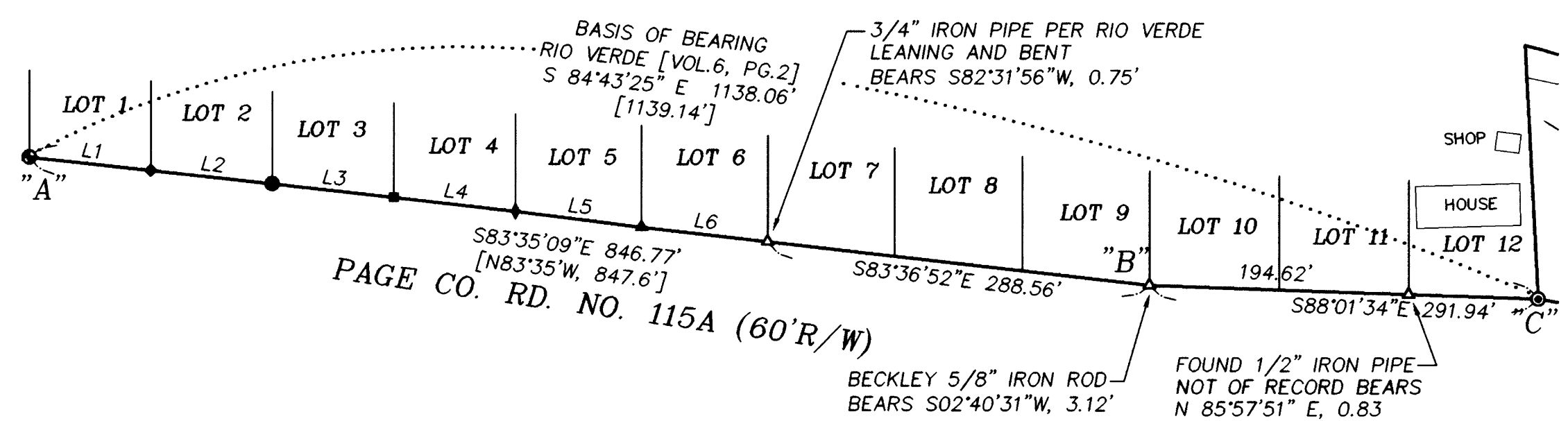
**NARRATIVE:**

THE PURPOSE OF THIS SURVEY WAS TO MONUMENT THE CORNERS OF LOT 13, RIO VERDE. THIS SURVEY WAS CONTROLLED BY MONUMENTS FOUND PER THE PLAT OF RIO VERDE, (VOL. 6, PG. 2) CS 55/298, M 40-61, M 48-65, M 116-26, PARTITION PLAT 2001-0001 AND PARTITION PLAT 2003-0030. I COMPUTED AN INVERSE BETWEEN THE 2" IRON PIPE AT THE RIO VERDE INITIAL POINT ("A") AND A 1/2" IRON ROD PER CS 55/298 AT THE SW CORNER OF LOT 13 ("C") AS THE BASIS OF BEARINGS. I ALSO USED THE "A"-("C") INVERSE DISTANCE TO COMPUTE A PLAT SCALE FACTOR OF 0.99909856 AND NOTE THAT THE INVERSE DISTANCES BETWEEN THE M 116-26, 2001-0001, 2003-0030, M 40-61 AND RIO VERDE MONUMENTS ON THE SOUTH LINE OF LOTS 1-5 CLOSELY MATCH THIS SCALE FACTOR AND THEREFORE CLOSELY MATCH THE POSITION OF MONUMENT "C". I COMPUTED THE SOUTH LINE OF RIO VERDE BY HOLDING THE COMPUTED RECORD PLAT ANGLE BETWEEN LINE "A"-("C") AND LINES "C"-("B") AND "C"-("D") WITH DISTANCES COMPUTED USING THE LISTED PLAT SCALE FACTOR. I FOUND LINE "C"-("D") TO CLOSELY MATCH A RIGHT OF WAY LINE 30 FEET NORTH OF THE AS-BUILT CENTERLINE OF PAGE ROAD AND THEREFORE DID NOT ACCEPT THE M 48-65 MONUMENT AS THE SE CORNER OF LOT 15 AND ALSO NOTE A 2'20" DISCREPANCY BETWEEN THE M 48-65 BEARING AND THE RIO VERDE BEARING OF THE SOUTH LINE OF LOTS 13, 14 AND 15. I HELD THE 3/4" IRON PIPE "E" AS CONTROLLING THE WEST LINE OF LOT 13 AND NOTE THAT IT MATCHES THE CS 55/298 TIES TO IMPROVEMENTS ON LOT 12 AND IS A CURRENT LINE OF POSSESSION BETWEEN LOT 12 AND LOT 13. I COMPUTED THE EAST LINES OF LOTS 13, 14 AND 15 BY HOLDING RECORD PLAT ANGLES AND THE PLAT SCALE FACTOR AND NOTE THAT THE EAST LINE OF LOT 13 CLOSELY MATCHES EXISTING POSSESSION AND IMPROVEMENTS. I FOUND MONUMENTS FROM AN UNRECORDED SURVEY BY WILLIAM BECKLEY, FORMER PLS 2417 AS NOTED ON THE PLAT. I DROVE THE MONUMENTS 6" BELOW THE SURFACE OF THE GROUND.

THIS SURVEY WAS PERFORMED BY ADAM DEGROOT, JOEL HERZBERG AND TONY BELLANDO USING LEICA SYSTEM 1200 TOTAL STATION WITH COMPUTATIONS BY KRIS DEGROOT AND DRAFTING BY BILL WARREN.

REGISTERED  
PROFESSIONAL  
LAND SURVEYOR  
*Kristian O. Degroot*  
OREGON  
JULY 17, 1981  
KRISTIAN O. DEGROOT  
1941  
RENEWAL DATE: 12-31-07

**DETAIL**  
SCALE: 1" = 100'



**LEGEND:**

- ⊙ = SET 5/8" x 30" IRON ROD w/PLASTIC CAP MK'D. "BTS ENG-SURV"
- = FOUND 5/8" IRON ROD PER 2001-0001
- ◆ = FOUND 3/4" IRON ROD PER M 116-26
- ◇ = FOUND 3/4" IRON ROD PER M 40-61
- ⊙ = FOUND 5/8" IRON ROD PER M 48-65
- ⊙ = FOUND 1/2" IRON PIPE OR AS NOTED PER CS 55/298
- = FOUND 5/8" IRON ROD PER 2003-0030
- ⊙ = FOUND 2" IRON PIPE, INITIAL POINT RIO VERDE SUBDIVISION (VOL.6, PG.2)
- ▲ = FOUND 3/4" IRON PIPE PER RIO VERDE SUBDIVISION (VOL.6, PG.2)
- △ = COMPUTED POINT RIO VERDE SUBDIVISION (VOL.6, PG.2)
- ( ) = RECORD PER M 48-65
- [ ] = RECORD PER RIO VERDE SUBDIVISION (VOL.6, PG.2)
- < > = RECORD PER CS 55/298

NO.	BEARING	DISTANCE	RECORD
L1	S83°43'45"E	91.89	[N83°35'W, 92.0']
L2	S83°45'06"E	91.92	[N83°35'W, 92.0']
L3	S83°40'31"E	91.92	[N83°35'W, 92.0']
L4	S83°45'04"E	91.87	[N83°35'W, 92.0']
L5	S82°55'36"E	95.30	[N83°35'W, 92.0']
L6	S83°36'52"E	95.32	[N83°35'W, 92.0']
L7	S76°41'34"E	12.30	
L8	S09°30'51"W	11.85	

**BTS ENGINEERING & SURVEYING, INC.**  
431 S.E. MAIN ST., ROSEBURG, OR 97470  
PHONE (541) 673-0966 FAX (541) 673-0105

SCALE: 1" = 30'	FOR: JAMES STROTHER P.O. BOX 991 WINCHESTER, OR 97495	JOB #: 06-067 FILE: STROTHER PLAT.DWG SHEET 1 OF 1
DATE: SEPTEMBER 5, 2006		

MAP FILE M 151-42

MAP FILE M 151-42