

# MAP OF SURVEY

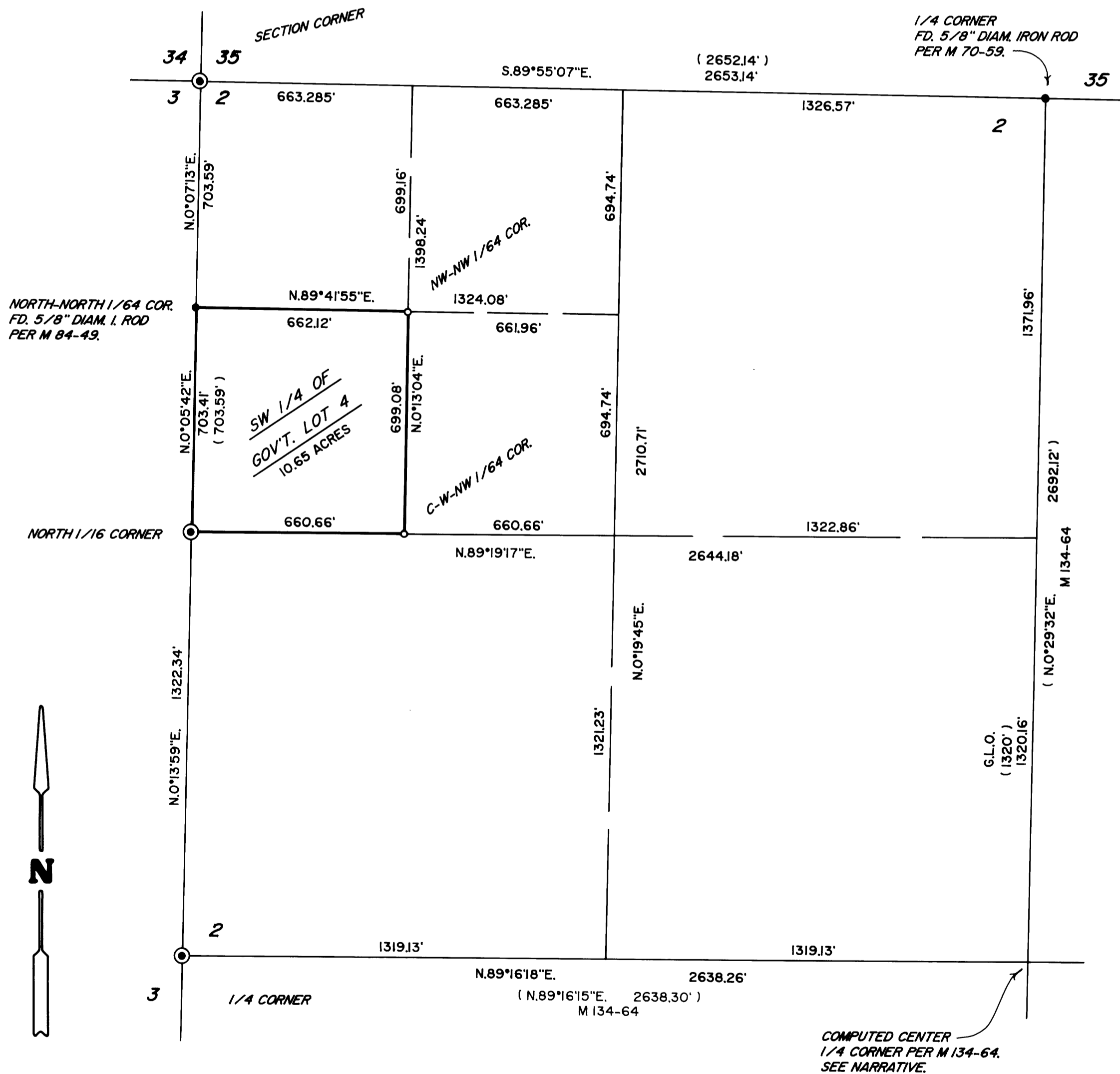
LOCATED in the NW 1/4 of Section 2, T. 25 S., R. 6 W., W.M.  
in Douglas County, Oregon.

August 15, 2006

FILED  
Date: 9-11-2006 By: NW  
This survey consists of:  
Map: M 151-37  
Narrative:  
Corner Rpt:  
DOUGLAS COUNTY  
SURVEYOR

SURVEYED FOR: RAY FUNK AND SHELLY SHOPTAW  
4130 WORONZOF DRIVE  
ANCHORAGE, ALASKA 99517

SURVEYED BY: DAVID EDWARDS LAND SURVEYING  
P.O. BOX 361  
OAKLAND, OREGON 97462  
PHONE: (541) 459-0512



### LEGEND

- ⊙ INDICATES B.L.M. OR COUNTY SURVEYOR BRASS CAP FOUND.
- INDICATES 5/8" X 30" STEEL REBAR W/RED PLASTIC CAP MKD. "D.A. EDWARDS-LS 2339" SET.
- ( ) RECORD DATA AS NOTED.
- INDICATES BOUNDARY POSTED AND FLAGGED THIS SURVEY.

SCALE: 1" = 300'

BASIS OF BEARINGS: COMPUTED LINE FROM THE NORTH 1/4 CORNER TO THE WEST 1/4 CORNER  
PER M 134-64. RECORD = S.44°18'55"W., 3809.32'  
MEASURED = S.44°18'55"W., 3809.26'

### NARRATIVE

THE PURPOSE OF THIS SURVEY IS TO LOCATE AND MONUMENT THE BOUNDARIES OF THE SW 1/4 OF GOVERNMENT LOT 4 IN SECTION 2. CONTROLLING MONUMENTS WERE TIED IN AND THE SUBDIVISION OF THE NW 1/4 COMPUTED AS SHOWN. THE CENTER 1/4 CORNER POSITION WAS COMPUTED USING RECORD BEARING AND DISTANCE FROM M 134-64. STEEL FENCE POSTS WERE SET AT POINTS ALONG THE BOUNDARIES AND NEAR THE PROPERTY CORNERS. A COMBINATION OF BLUE AND ORANGE FLAGGING WAS ALSO USED TO MARK THE LINES.

FIELD CREW: BRANT MILLER AND ERIC SPRINKLE.

EQUIPMENT: NIKON TOTAL STATION.

COMPS. AND DRAFTING: DAVID EDWARDS.



COMPUTED CENTER  
1/4 CORNER PER M 134-64.  
SEE NARRATIVE.

MAP FILE M 151-37

MAP FILE M 151-37