

# JUNIPER PROPERTIES LIMITED PARTNERSHIP

TOWNSHIP 22 SOUTH, RANGE 7 WEST, W.M. SECTION 22  
DOUGLAS COUNTY, OREGON

DATE: JULY 2006

MANAGED BY LONE ROCK TIMBER MANAGEMENT CO.  
PO BOX 1127 ROSEBURG, OREGON 97470

SURVEY: J 22 -7 - 22 TRACT

FILED  
Date: 8-16-2006 By: JC  
This survey consists of:  
Map: M151-22  
Narrative:  
Corner Rpt:  
DOUGLAS COUNTY  
SURVEYOR

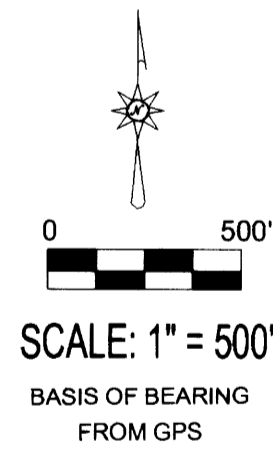
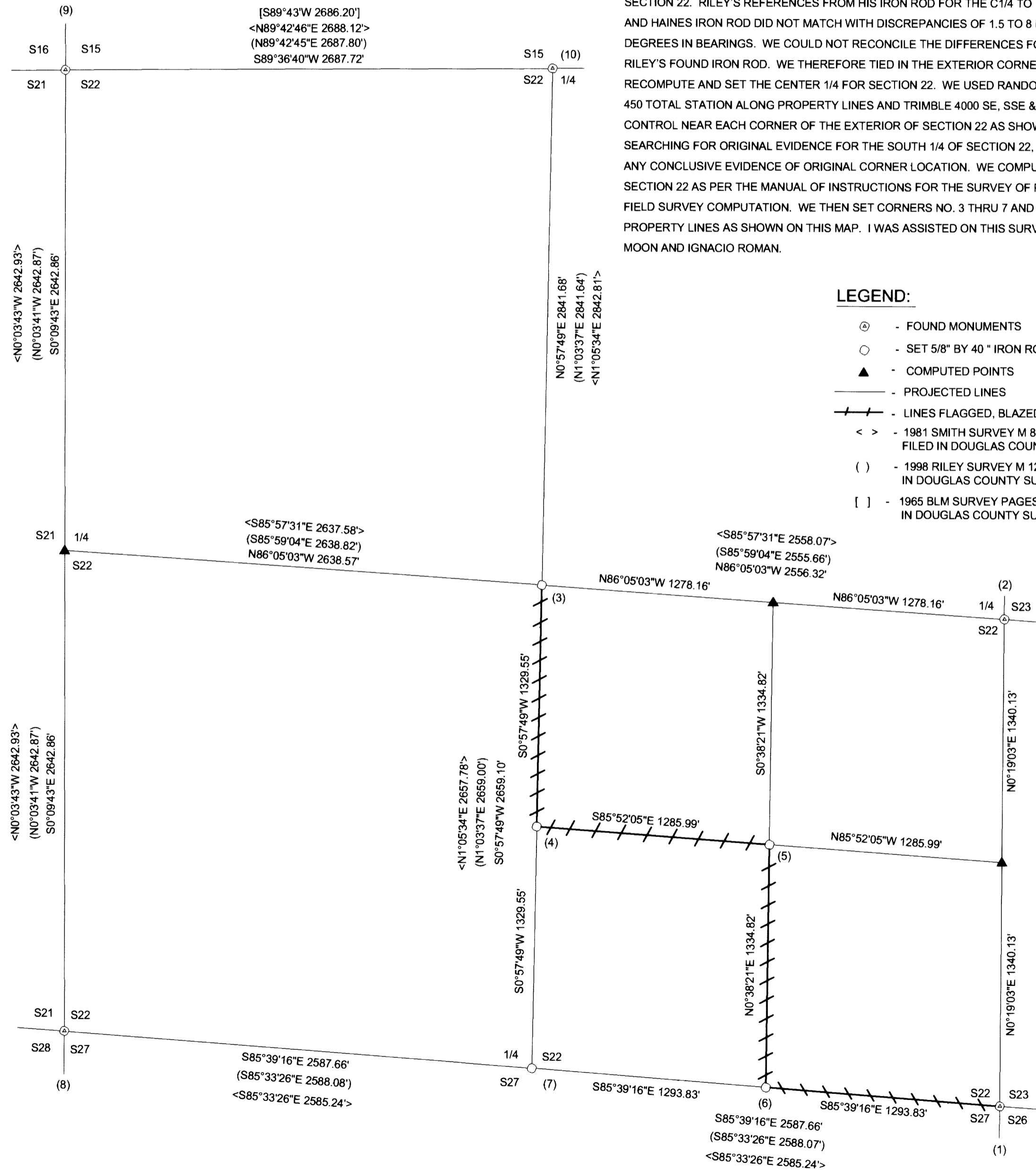
MAP FILE M151-22

### NARRATIVE:

THIS SURVEY WAS CONDUCTED TO ESTABLISH PROPERTY CORNERS AND PROPERTY LINES FOR TIMBER CUTTING PURPOSES. WE INITIATED THIS SURVEY AT AN IRON ROD SET BY RILEY FOR THE CENTER 1/4 OF SECTION 22. RILEY'S REFERENCES FROM HIS IRON ROD FOR THE C1/4 TO HIS RECORD BEARING TREES AND HAINES IRON ROD DID NOT MATCH WITH DISCREPANCIES OF 1.5 TO 8 FEET IN DISTANCE AND 6° TO 52° DEGREES IN BEARINGS. WE COULD NOT RECONCILE THE DIFFERENCES FOR AN ACCURATE C1/4 LOCATION OF RILEY'S FOUND IRON ROD. WE THEREFORE TIED IN THE EXTERIOR CORNERS OF SECTION 22 AS SHOWN TO RECOMPUTE AND SET THE CENTER 1/4 FOR SECTION 22. WE USED RANDOM TRAVERSES WITH A NIKON DTM 450 TOTAL STATION ALONG PROPERTY LINES AND TRIMBLE 4000 SE, SSE & 4400 GPS EQUIPMENT FOR GPS CONTROL NEAR EACH CORNER OF THE EXTERIOR OF SECTION 22 AS SHOWN. WE ALSO SPENT TIME SEARCHING FOR ORIGINAL EVIDENCE FOR THE SOUTH 1/4 OF SECTION 22, BUT WE WERE UNABLE TO FIND ANY CONCLUSIVE EVIDENCE OF ORIGINAL CORNER LOCATION. WE COMPUTED THE SUBDIVISION OF SECTION 22 AS PER THE MANUAL OF INSTRUCTIONS FOR THE SURVEY OF PUBLIC LANDS BASED ON OUR FIELD SURVEY COMPUTATION. WE THEN SET CORNERS NO. 3 THRU 7 AND BLAZED, PAINTED AND TAGGED PROPERTY LINES AS SHOWN ON THIS MAP. I WAS ASSISTED ON THIS SURVEY BY GARY ANGIOLET, JASON MOON AND IGNACIO ROMAN.

### LEGEND:

- ⊙ - FOUND MONUMENTS
- - SET 5/8" BY 40" IRON ROD WITH ALUMINUM CAP
- ▲ - COMPUTED POINTS
- - PROJECTED LINES
- / — - LINES FLAGGED, BLAZED & TAGGED
- < > - 1981 SMITH SURVEY M 88 - 19 FILED IN DOUGLAS COUNTY SURVEYORS OFFICE
- ( ) - 1998 RILEY SURVEY M 128 - 33 FILED IN DOUGLAS COUNTY SURVEYORS OFFICE
- [ ] - 1965 BLM SURVEY PAGES 13951 - 13952, & 13960 IN DOUGLAS COUNTY SURVEYORS OFFICE



REGISTERED  
PROFESSIONAL  
LAND SURVEYOR  
*Ken W. Hoffine*  
OREGON  
JULY 16, 1987  
KEN W. HOFFINE  
2291  
EXPIRES 6-30-07

### CORNER INFORMATION:

- 1) THE SOUTHEAST SECTION CORNER FOR SECTION 22.  
FOUND 1965 BLM BRASS CAP WITH 1 1/2" IRON BAR ALONG SIDE.  
-- 25" CEDAR BEARS S42 1/2"W, 50.8 FEET (RECORD S41 1/2"W, 51.48 FEET) HEALED FACE AND BLM TAG  
-- 14" SLOPED TALL DOUGLAS FIR STUMP BEARS S43 1/2"E, 35.2 FEET (RECORD S42 1/2"E, 36.3 FEET) HEALED FACE AND BLM TAG  
-- 52" FIR STUMP BEARS S34"W, 40.92 FEET AS PER RECORD  
CORNER SITS APPROXIMATELY 75 FEET WEST OF ROAD AT NORTHWEST CORNER OF SMALL CLEAR-CUT.
- 2) THE 1/4 CORNER BETWEEN SECTIONS 22 AND SECTION 23  
FOUND 1965 BLM BRASS CAP 0.2 FEET ABOVE GROUND.  
-- 23" CEDAR BEARS N75 1/4"W, 20.8 FEET (RECORD N76 1/2"W, 21.45 FEET) HEALED FACE AND BLM TAG  
-- 31" DOUGLAS FIR BEARS N54"E, 9.3 FEET (RECORD N52"E, 9.57 FEET) HEALED FACE AND BLM TAG  
CORNER SITS ON WEST FACING SLOPE APPROXIMATELY 100 FEET SOUTH OF SMALL DRAW, AND APPROXIMATELY 150 FEET SOUTH OF THE SOUTHEAST CORNER OF RECENT CLEAR-CUT.
- 3) THE CENTER 1/4 CORNER OF SECTION 22  
SET 5/8" X 40" IRON ROD WITH 2 1/2" ALUMINUM CAP MARKED LONE ROCK TIMBER T22S R7W S22 C1/4 2006 PLS 2291.  
-- 18" DOUGLAS FIR BEARS S1 1/2"E, 31.1 FEET, WE SCRIBE C1/4 S22 B.T. AND TAG  
-- 15" DOUGLAS FIR BEARS N56 1/4"E, 42.5 FEET, HEALED FACE AND TAG  
-- 12" DOUGLAS FIR BEARS N10 1/4"W, 36.7 FEET, HEALED FACE AND TAG  
-- 18" DOUGLAS FIR BEARS S1 1/2"E, 31.1 FEET, HEALED FACE AND TAG  
-- 5/8" IRON ROD WITH ALUMINUM CAP (RILEY'S CAP) BEARS S56°37'45"W, 9.95 FEET  
-- 5/8" IRON ROD WITH HAINES WASHER ON TOP, BEARS S69°15'21"W, 72.87 FEET  
CORNER LIES ON STEEP EAST FACING SLOPE APPROXIMATELY 25 FEET NORTH OF SMALL DRAW.
- 4) THE CENTER SOUTH 1/16 CORNER OF SECTION 22  
SET 5/8" X 40" IRON ROD WITH 2 1/2" ALUMINUM CAP MARKED LONE ROCK TIMBER CW1/16 S22 2006 PLS 2291.  
-- 13" DOUGLAS FIR BEARS N76 1/2"W, 13.8 FEET, WE SCRIBE CS1/16 S22 B.T. AND TAG  
-- 21" DOUGLAS FIR BEARS S2°W, 37.1 FEET, WE SCRIBE CS1/16 S22 B.T. AND TAG  
-- HAINES REBAR WITH WASHER BEARS S86°37'03"E 136.575'  
CORNER LIES ON STEEP SOUTHWEST SLOPE, APPROXIMATELY 50 FEET NORTH OF DRAW.
- 5) THE SOUTHEAST 1/16 CORNER OF SECTION 22  
SET 5/8" X 40" IRON ROD WITH 2 1/2" ALUMINUM CAP MARKED LONE ROCK TIMBER SE1/16 S22 2006 PLS 2291.  
-- 13" DOUGLAS FIR BEARS N62 3/8"E, 34.1 FEET, WE SCRIBE SE1/16 S22 B.T. AND TAG  
-- 21" DOUGLAS FIR BEARS S6 3/4"E, 9.1 FEET, WE SCRIBE SE1/16 S22 B.T. AND TAG  
CORNER LIES ON STEEP SOUTHWEST SLOPE APPROXIMATELY 50 FEET NORTH OF DRAW.
- 6) THE EAST 1/16 CORNER BETWEEN SECTION 22 AND SECTION 27  
SET 5/8" X 40" IRON ROD WITH 2 1/2" ALUMINUM CAP MARKED LONE ROCK TIMBER E1/16 S22 S27 2006 PLS 2291.  
-- 11" DOUGLAS FIR BEARS N58 1/2"W, 12.9 FEET, WE SCRIBE E1/16 S22 B.T. AND TAG TREE  
-- 14" DOUGLAS FIR BEARS S4"E, 11.7 FEET, WE SCRIBE E1/16 S22 B.T. AND TAG TREE  
CORNER LIES ON WEST FACING SLOPE APPROXIMATELY 200 FEET WEST OF DIRT ROAD.
- 7) THE SOUTH 1/4 CORNER OF SECTION 22  
SET 5/8" X 40" IRON ROD WITH 2 1/2" ALUMINUM CAP MARKED LONE ROCK TIMBER T22S R7W 1/4 S22 & S27 2006 PLS 2291.  
-- 30" DOUGLAS FIR BEARS S82 1/2"W, 57.7 FEET, WE SCRIBE T22S R7W 1/4 S22 B.T. AND TAG TREE  
-- 14" DOUGLAS FIR BEARS S20 1/2"E, 55.4 FEET, WE SCRIBE T22S R7W 1/4 S27 B.T. AND TAG TREE  
-- 21" WHITE FIR BEARS N58 1/4"E, 40.2 FEET, WE SCRIBE T22S R7W 1/4 S27 B.T. AND TAG TREE  
-- 25" WHITE FIR BEARS N8 1/4"W, 19.1 FEET, WE SCRIBE T22S R7W 1/4 S22 B.T. AND TAG TREE  
CORNER SITS IN EAST-WEST FENCE LINE IN SMALL SADDLE APPROXIMATELY 175 FEET SOUTH OF OLD DIRT ROAD.
- 8) THE SOUTHWEST SECTION CORNER FOR SECTION 22  
FOUND 1996 BLM BRASS CAP AT GROUND LEVEL.  
-- 43" DOUGLAS FIR BEARS N16 1/4"W, 8.5 FEET (RECORD N10"W, 8.6 FEET) HEALED FACE  
-- 43" DOUGLAS FIR BEARS N13 1/4"E, 16.0 FEET (RECORD N27"E, 16.5 FEET) HEALED FACE  
-- 9" DOUGLAS FIR BEARS S63 1/4"E, 26.1 FEET (RECORD S62 3/4"E, 26.07 FEET) HEALED FACE AND BLM TAG  
-- 10" DOUGLAS FIR BEARS S3°W, 21.3 FEET (RECORD S3 1/2"W, 21.45 FEET) HEALED FACE AND BLM TAG  
CORNER SITS ON SOUTH FACING SLOPE OLD FENCE LINE RUNS APPROXIMATELY EAST-WEST FROM CORNER.
- 9) THE NORTHWEST SECTION CORNER FOR SECTION 22  
FOUND 1965 BLM BRASS CAP AT GROUND LEVEL WITH 3/4" IRON PIPE ALONG SIDE.  
-- 16" NORTH BRANCH OF OAK BEARS N72 1/4"W, 45.9 FEET (RECORD N73°W, 112.2 FEET (170 LKS) BLM TAG READS (69 LKS) 45.54 FEET, HEALED FACE  
-- 23" OAK BEARS S48°W, 48.4 FEET (RECORD S47°W, 48.51 FEET) HEALED FACE AND BLM TAG  
-- 22" OAK BEARS S29 1/4"E, 27.5 FEET (RECORD S28°E, 27.72 FEET) HEALED FACE AND BLM TAG  
-- 14" OAK BEARS N37 1/4"E, 17.9 FEET (RECORD N37°E, 17.49 FEET) HEALED FACE AND BLM TAG  
CORNER SITS ON WEST EDGE OF FLAT GROUND APPROXIMATELY 50 FEET WEST OF NORTH-SOUTH FENCE LINE IN BLACKBERRY THICKET.
- 10) THE 1/4 CORNER BETWEEN SECTION 15 AND SECTION 22  
FOUND 1962 COUNTY CAP.  
-- 15" DOUGLAS FIR BEARS N25 3/4"E, 19.5 FEET (RECORD N28°E, 19.6 FEET) HEALED FACE AND TAG  
-- 20" DOUGLAS FIR BEARS S49 1/2"E, 16.7 FEET (RECORD S50°E, 16.7 FEET) HEALED FACE AND TAG  
CORNER SITS ON SOUTH FACING SLOPE APPROXIMATELY 300 FEET NORTH OF HIGHWAY #38.

MAP FILE M151-22