

SURVEY NARRATIVE TO COMPLY WITH PARAGRAPH 209.250 OREGON REVISED STATUTES

PURPOSE

TO ESTABLISH AND MARK STATE FOREST LANDS SOUTH PROPERTY LINE LOCATED IN SECTION 8, TOWNSHIP 32 SOUTH, RANGE 5 WEST, WILLAMETTE MERIDIAN.

PROCEDURE

A LEICA TPS 1101 TOTAL STATION WAS USED TO CONNECT THE CONTROLLING CORNERS OF THIS SURVEY. STATE LANDS OWNERSHIP IN SECTION 8 CONSISTS OF THE NORTH ONE-HALF OF THE SECTION. THIS SURVEY WAS PRIMARILY CONDUCTED TO ESTABLISH AND MARK THE SOUTH PROPERTY LINE WHICH IS THE EAST-WEST CENTERLINE OF SECTION 8. A TIE TO THE NORTHEAST SECTION CORNER AND THE EAST ONE QUARTER CORNER SET BY RONALD A. BRANDT IN 1970 INDICATED A SIZABLE VARIATION IN DISTANCE. THEREFORE I CONTINUED ALONG WITH THIS SURVEY TO INCLUDE A TIE TO THE SOUTHEAST SECTION CORNER. TAKING INTO ACCOUNT THE DIFFERENCE IN MEASURED DISTANCE, I REESTABLISHED THE ONE QUARTER CORNER COMMON TO SECTIONS 8 AND 9 AS SHOWN ON THE PLAT.

BEARING AND DISTANCE WERE COMPUTED AND OFFSETS CALCULATED TO POINTS ON TRUELINE FOR CARSONITE BOUNDARY MARKERS. ALL CORNER ACCESSORIES FOR RESTORED AND REESTABLISHED CORNERS WERE MARKED AS OUTLINED IN THE "MANUAL OF INSTRUCTIONS FOR SURVEY OF THE PUBLIC LANDS OF THE UNITED STATES" 1973. BEARINGS TO ACCESSORIES WERE TAKEN WITH A STAFF COMPASS SET AT 19° EAST MAGNETIC DECLINATION. DISTANCES WERE MEASURED TO AN ALUMINUM NAIL IN BT FACE. FOR A DETAILED REPORT ON FOUND CORNERS SEE COUNTY RECORDS.

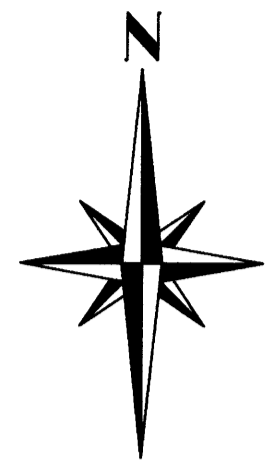
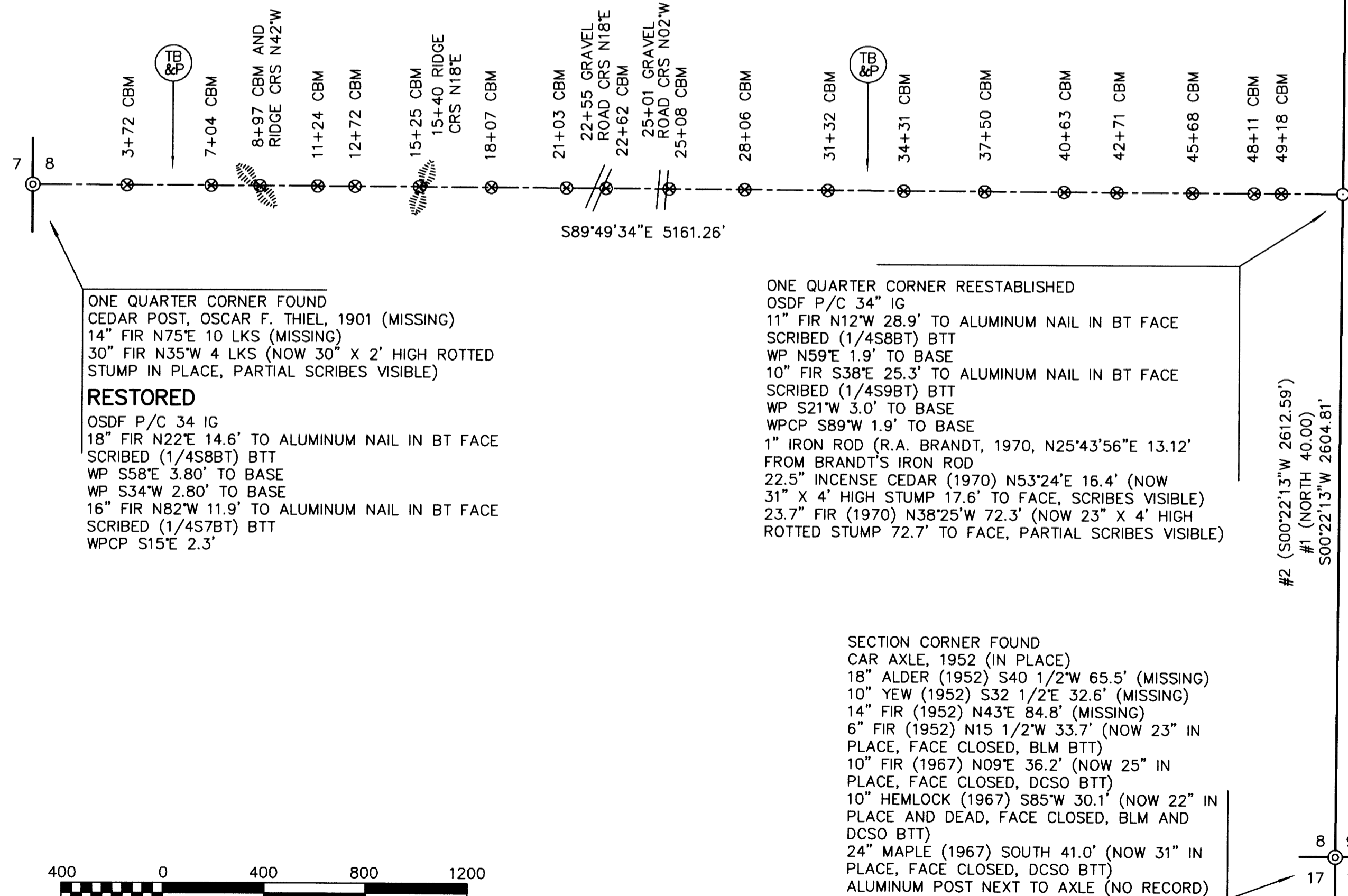
BASIS OF BEARING

RONALD A. BRANDT, 1970, SURVEY (COUNTY SURVEY NO. 55-178) FROM THE SECTION CORNER COMMON TO SECTIONS 4, 5, 8 AND 9, TO THE SECTION CORNER COMMON TO SECTIONS 8, 9, 16 AND 17, TOWNSHIP 32 SOUTH, RANGE 5 WEST, WILLAMETTE MERIDIAN.

SECTION CORNER FOUND
 DCSO P/C, 1965 (IN PLACE)
 12" LAUREL (1901) S55°W 75 LKS (NOW 28" IN PLACE, FACE EXPOSED, PARTIAL SCRIBES VISIBLE, BLM BTT AND YMLP)
 18" FIR (1901) N09°W 40 LKS (NOW 45" IN PLACE, FACE EXPOSED AND ROTTED, BLM BTT AND YMLP)
 10" FIR (1962) N66°E 18 LKS (NOW 18" IN PLACE, FACE COVERED BY OLD LOG)
 10" FIR (1962) S12°E 47 LKS (NOW 36" IN PLACE, FACE CLOSED, BLM BTT)
 14" FIR (1962) N13 1/2°W 107 LKS (NOW 20" IN PLACE, FACE CLOSED, BLM BTT)

ONE QUARTER CORNER REESTABLISHED
 OSDF P/C 34" IG
 11" FIR N12°W 28.9' TO ALUMINUM NAIL IN BT FACE SCRIBED (1/4S8BT) BTT
 WP N59°E 1.9' TO BASE
 10" FIR S38°E 25.3' TO ALUMINUM NAIL IN BT FACE SCRIBED (1/4S9BT) BTT
 WP S21°W 3.0' TO BASE
 WPCP S89°W 1.9' TO BASE
 1" IRON ROD (R.A. BRANDT, 1970, N25°43'56"E 13.12' FROM BRANDT'S IRON ROD
 22.5" INCENSE CEDAR (1970) N53°24'E 16.4' (NOW 31" X 4' HIGH STUMP 17.6' TO FACE, SCRIBES VISIBLE)
 23.7" FIR (1970) N38°25'W 72.3' (NOW 23" X 4' HIGH ROTTED STUMP 72.7' TO FACE, PARTIAL SCRIBES VISIBLE)

SECTION CORNER FOUND
 CAR AXLE, 1952 (IN PLACE)
 18" ALDER (1952) S40 1/2°W 65.5' (MISSING)
 10" YEW (1952) S32 1/2°E 32.6' (MISSING)
 14" FIR (1952) N43°E 84.8' (MISSING)
 6" FIR (1952) N15 1/2°W 33.7' (NOW 23" IN PLACE, FACE CLOSED, BLM BTT)
 10" FIR (1967) N09°E 36.2' (NOW 25" IN PLACE, FACE CLOSED, DCSO BTT)
 10" HEMLOCK (1967) S85°W 30.1' (NOW 22" IN PLACE AND DEAD, FACE CLOSED, BLM AND DCSO BTT)
 24" MAPLE (1967) SOUTH 41.0' (NOW 31" IN PLACE, FACE CLOSED, DCSO BTT)
 ALUMINUM POST NEXT TO AXLE (NO RECORD)



SURVEY BY:
REGISTERED PROFESSIONAL LAND SURVEYOR
James M. Mcintosh
OREGON
 JULY 13, 1984
JAMES M. MCINTOSH
 2103
 JAMES M. MCINTOSH
 63612 FIFTH ROAD
 COOS BAY, OREGON

FILED
 Date: 5-24-2006 By: nlw
 This survey consists of:
 Map: M 150-56
 Narrative: _____
 Corner Rpt: _____
DOUGLAS COUNTY SURVEYOR

EXPIRATION DATE OF CERTIFICATE 12-31-06

LEGEND

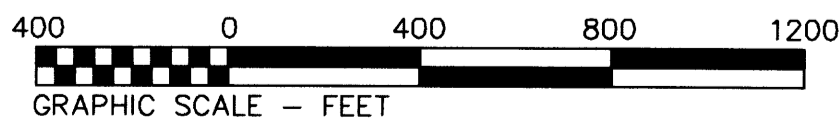
- DCSO P/C = DOUGLAS COUNTY SURVEYORS OFFICE 1 1/2" IRON POST WITH BRASS CAP
- OSDF P/C = OREGON STATE DEPARTMENT OF FORESTRY 1 1/2" X 36" ALUMINUM PIPE WITH 3 3/4" ALUMINUM CAP WITH MAGNETIC INSERT
- ⊙ = MONUMENT FOUND
- = MONUMENT SET
- WP = ORANGE CARSONITE MARKER CBM-250 LABELED WITNESS POST
- BT = BEARING TREE
- BTT = BEARING TREE TAG
- YMLP = YELLOW METAL LOCATION POSTER
- WPCP = 4" X 4" X 72" WHITE PAINTED CEDAR POST
- ⊗ = TRUE BLAZED AND POSTED
- ⊗ = ORANGE CARSONITE MARKER AND STATION CBM-250 LABELED BOUNDARY MARKER
- BLM = BUREAU OF LAND MANAGEMENT
- CRS = COURSE
- IG = IN GROUND
- REESTABLISHED = LOST GLO, CADASTRAL OR OTHER CORNER RESET BY PROPORTIONATE MEASUREMENT
- #1 () = RECORD BEARING AND DISTANCE IN CHAINS W. H. BYARS, 1871, CONTRACT NO. 152
- #2 () = RECORD BEARING AND DISTANCE IN FEET RONALD A. BRANDT, 1970, COUNTY SURVEY NO. 55/178

I, JAMES M. MCINTOSH, HEREBY CERTIFY THAT THIS SURVEY WAS PREPARED USING HP CARTRIDGE NO. C4871A ON CONTINENTAL NO. JPC4M2 POLYESTER FILM.

James M. Mcintosh DATE: 5-19-06

SURVEY FOR
 STATE OF OREGON - DEPARTMENT OF FORESTRY
SECTION 8, T.32 S., R.5 W., W.M.

DOUGLAS COUNTY, OREGON
 LEICA TOTAL STATION SURVEY BY:
 J. M. MCINTOSH, T. VAN VLEET AND R. C. HALL
 DRAWN BY: T. VAN VLEET
 MAY 4, 2006
 SCALE: 1" = 400'



ODF PLAT NO. 451

MAP FILE M 150-56

MAP FILE M 150-56