

# A SURVEY FOR ROSEBURG RESOURCES CO.

LOCATED IN SECTION 31, T30S, R6W, W.M., DOUGLAS COUNTY, OREGON

**FILED**  
 Date: 5-22-2006 By: JC  
 This survey consists of:  
 Map: M150-53  
 Narrative:  
 Corner Rpt: 65/58-17 A-D

DOUGLAS COUNTY  
 SURVEYOR

LINE	BEARING	HORIZ DIST
L1	N0°04'48"E	193.21' (193.73' PER M48-27)
L2	N0°01'11"E	270.25' (270.25 CALC PER M106-47)

**SURVEYED BY:**  
 GREGORY D LANG  
 7550 WILLIS CR RD  
 WINSTON, OR 97496

**LEGEND:**

- SET 5/8" X 36" IRON ROD WITH ALUMINUM CAP UNLESS OTHERWISE NOTED
- ⊙ FOUND 5/8" IRON ROD AS NOTED
- FOUND EXISTING SECTION CORNER MONUMENT AS SHOWN

**NARRATIVE:**

THE PURPOSE OF THIS SURVEY IS TO MONUMENT THE SOUTH 1/16TH CORNER AND THE ONE-QUARTER CORNER COMMON TO SECTIONS 31 & 32; ALSO TO MARK THAT PORTION OF LINE BETWEEN THE S 1/16TH AND COW CREEK.

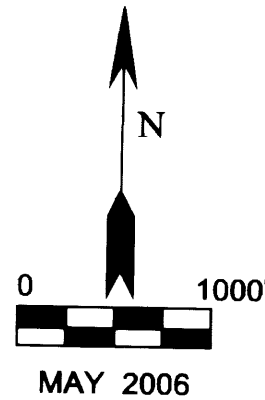
THE ONE QUARTER CORNER WAS MONUMENTED MIDWAY BETWEEN THE TWO SECTION CORNERS. THE SOUTH ONE-SIXTEENTH CORNER WAS SET USING DISTANCES FROM THE EXISTING BEARING TREES AND THOSE SHOWN ON SURVEY M112-52.

ALL TRAVERSES WERE LOOPED AND EXCEEDED A 1:10,000 PRECISION. LINES WERE MARKED WITH STEEL FENCE POSTS, RED FLAGGING, AND TREE BLAZES WHICH WERE PAINTED RED.

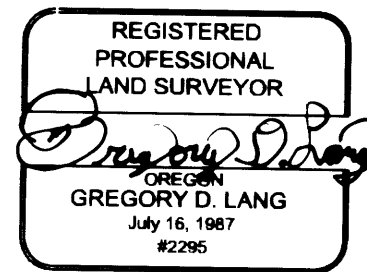
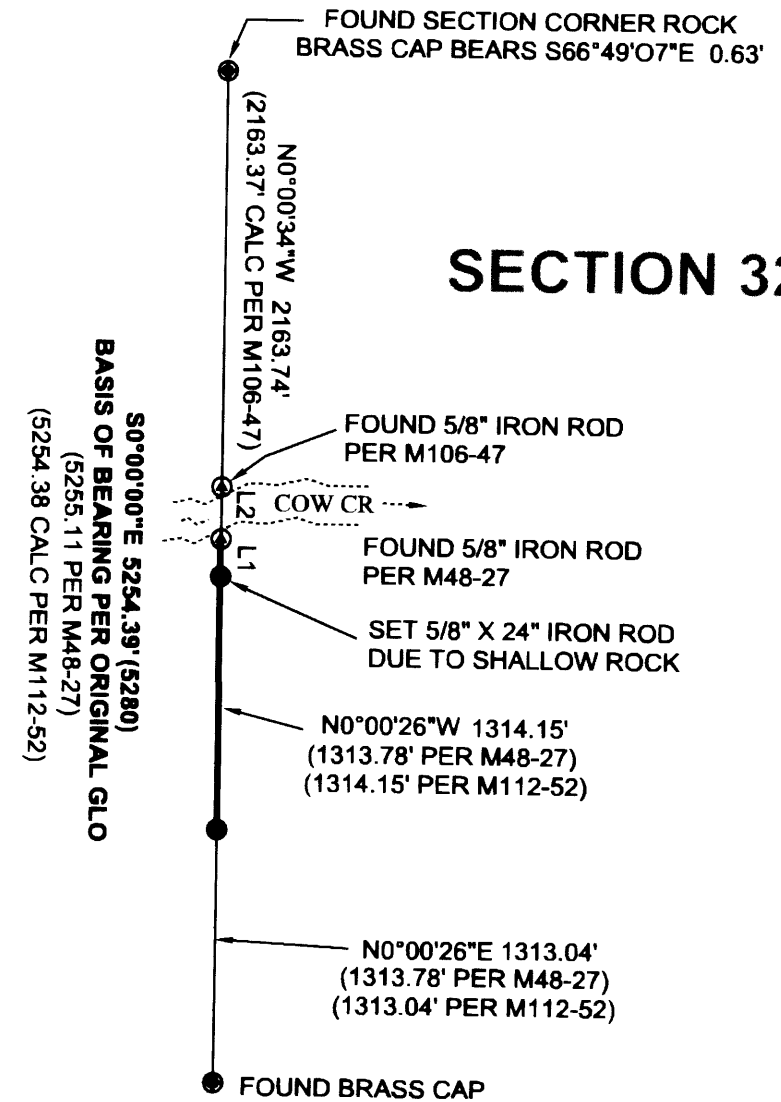
FIELD CREW: G.LANG, T.LANG, L.LANG  
 EQUIPMENT: NIKON DTM 420 TOTAL STATION  
 COMPS & DRAFTING: G.LANG

**NOTE: BT & CORNER MARKING INFORMATION IS PER CORNER REPORTS REFERENCED HEREON CS 65/58-17 A-D**

SECTION 31



SECTION 32



EXPIRES: 12-31-2006

M 150-53

M 150-53