

MAP OF SURVEY

LOCATED in the NW 1/4 of Section 12, T. 27 S., R. 3 W., W.M.
in Douglas County, Oregon.

March 22, 2006

FILED
Date: 5-3-2006 By: Jc
This survey consists of:
Map: M150-40
Narrative: _____
Corner Rpt: _____
**DOUGLAS COUNTY
SURVEYOR**

**REGISTERED
PROFESSIONAL
LAND SURVEYOR**
David A. Edwards
**OREGON
MAY 24, 1988
DAVID A. EDWARDS
2339**
RENEWS 12/31/01

SURVEYED FOR: *SENECA JONES TIMBER CO.
P.O. BOX 2129
ROSEBURG, OREGON 97470*

SURVEYED BY: *DAVID EDWARDS LAND SURVEYING
P.O. BOX 361
OAKLAND, OREGON 97462
PHONE: (541) 459-0512*

LEGEND

- ⊙ INDICATES B.L.M. BRASS CAP FOUND.
- INDICATES 3/4" DIAM. IRON ROD FOUND PER M II-78.
- () DENOTES RECORD DATA PER M II- 78.

SCALE: 1" = 500'

BASIS OF BEARINGS: M II-78 AS SHOWN.

NARRATIVE

THE PURPOSE OF THIS SURVEY IS TO POST AND BLAZE THE SOUTH LINE OF THE NW 1/4 OF THE NW 1/4 AND THE NORTH LINE OF THE NW 1/4 OF SECTION 12. RANDOM TRAVERSES WERE RUN NEAR THE SUBJECT BOUNDARIES AND OFFSETS MADE TO TRUE LINE. THE BOUNDARIES WERE MARKED BY BLAZING TREES ON EACH SIDE OF LINE, BY SETTING 6 FOOT STEEL POSTS ON LINE AT INTERVALS OF 200 FEET OR LESS AND BY HANGING LIBERAL AMOUNTS OF RED FLAGGING AONG TRUE LINE.

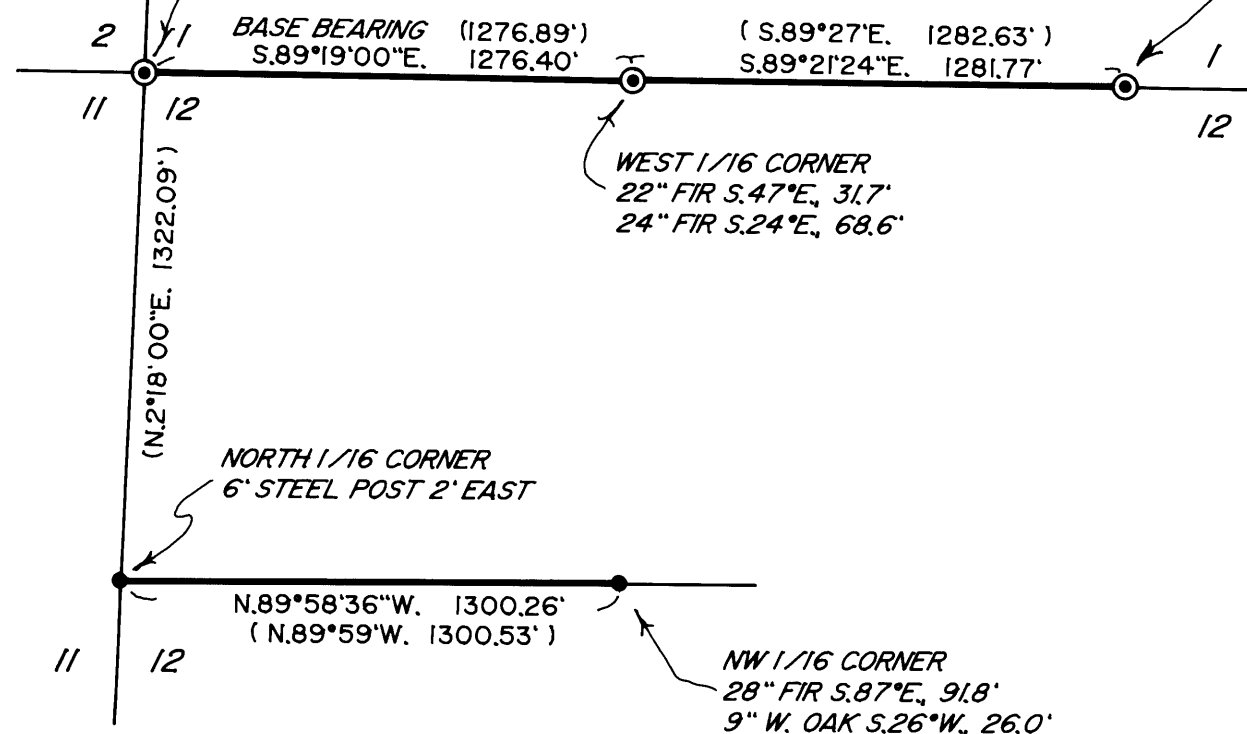
FIELD CREW: BRANT MILLER AND ERIC SPRINKLE.

EQUIPMENT: NIKON TOTAL STATION.

COMPS. AND DRAFTING: DAVID EDWARDS.

SECTION CORNER
18" MAPLE N.87°E., 50.3'
27" FIR N.30°E., 105.0'
24" FIR S.77°W., 86.7'
12" YEW N.48°W. 38.9'
23" FIR N.6°W., 45.6'
ALL W/HEALED BLAZES

1/4 CORNER
15" FIR N.43°E., 61.6'
19" FIR S.44°E., 66.3'
18" FIR S.29°E., 17.7'
13" FIR N.5°W., 12.2'
ALL WITH HEALED BLAZES



MAP FILE M150-40

MAP FILE M150-40