

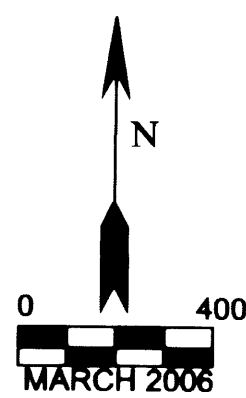
FILED

Date: 3/16/2006 By: HW
This survey consists of:
Map: M150-3
Narrative:
Corner Rpt: 65/58-2A&B

DOUGLAS COUNTY SURVEYOR

A SURVEY FOR ROSEBURG RESOURCES

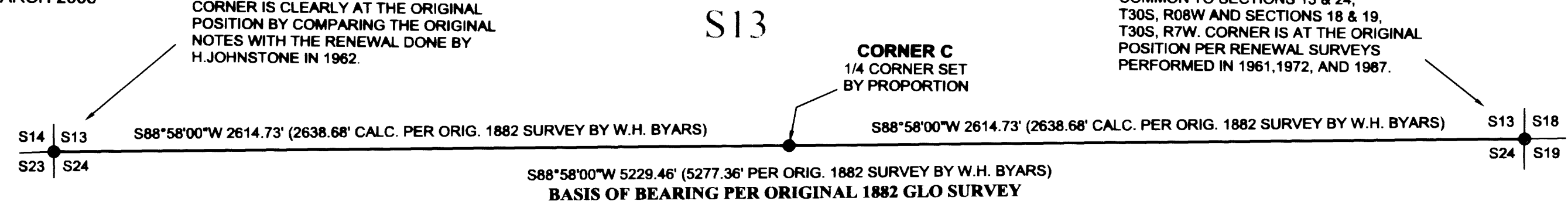
LOCATED IN SECTION 24, T30S, R8W, W.M., DOUGLAS COUNTY, OREGON



CORNER A
FD 1 1/4" IRON PIPE - SECTION CORNER
COMMON TO SECTIONS 13,14,23 & 24.
CORNER IS CLEARLY AT THE ORIGINAL
POSITION BY COMPARING THE ORIGINAL
NOTES WITH THE RENEWAL DONE BY
H.JOHNSTONE IN 1962.

CORNER B
FD BRASS CAP - SECTION CORNER
COMMON TO SECTIONS 13 & 24,
T30S, R08W AND SECTIONS 18 & 19,
T30S, R7W. CORNER IS AT THE ORIGINAL
POSITION PER RENEWAL SURVEYS
PERFORMED IN 1961,1972, AND 1987.

CORNER C
1/4 CORNER SET
BY PROPORTION



S13

S24

ROSEBURG RESOURCES PROPERTY

NARRATIVE

THE PURPOSE OF THIS SURVEY IS TO MONUMENT THE NORTH 1/4 CORNER OF SECTION 24; ALSO TO MARK THE NORTH LINE OF SAID SECTION.

THE TWO SECTION CORNERS WERE FOUND AS SHOWN AND TIED TOGETHER BY TWO CONTROL LOOPS WHICH MET STATE REQUIREMENTS FOR CLOSURE ACCURACY.

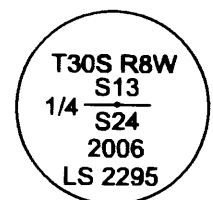
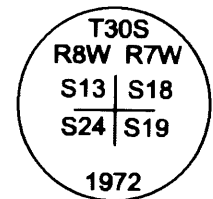
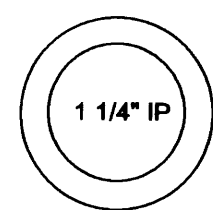
A THOROUGH SEARCH WAS MADE FOR THE ORIGINAL 1/4 CORNER BUT IT WAS NOT FOUND. WE MONUMENTED THE PROPORTIONATE POSITION ACCORDING TO THE DISTANCES GIVEN IN THE ORIGINAL 1882 SURVEY NOTES.

THE ENTIRE NORTH LINE OF SECTION 24 WAS MARKED WITH STEEL FENCE POSTS WHICH WERE PAINTED RED; IT WAS ALSO MARKED WITH RED FLAGGING AND THE TREES CLOSE TO LINE WERE BLAZED AND THE BLAZES PAINTED RED. A NIKON DTM 420 TOTAL STATION WAS USED FOR TRAVERSING. THE FIELD CREW PERSONNEL WERE GREG AND TREVOR LANG AND THE COMPUTATIONS WERE PERFORMED BY GREG LANG.

LEGEND

- SET 5/8" X 36" IRON ROD WITH ALLUMINUM CAP MARKED AS SHOWN
- FOUND MONUMENT AS NOTED

SURVEYED BY:
GREGORY D. LANG
7550 WILLIS CR. RD.
WINSTON, OR 97496



"CORNER A" BEARING TREES

EXISTING 15 1/2" CEDAR BEARS S61 1/2"E 30.50'
EXISTING 21" FIR BEARS S17 1/2"W 8.0'
NEW 6 1/2" FIR BEARS N82"E 102.0'
SCRIBED "T30S R8W S13 BT"
NEW 14 1/2" FIR BEARS N20 1/2"W 72.70'
SCRIBED "T30S R8W S14 BT"
FOUND FIR TO THE SOUTHWEST BUT DID NOT FIELD LOCATE IT (RECORD IS S74 1/4"W 54.0')

"CORNER B" BEARING TREES

THIS CORNER NEEDED NO RENEWAL. THE FOLLOWING ARE THE SURVEY RECORDS BY DALE BEDELL IN APRIL/MAY OF 1987:
20" FIR BEARS N38"E 53 LKS
12" FIR BEARS N72"W 15 LKS
19" FIR BEARS S37 1/2"W 102 LKS
8" MADRONE BEARS S61"E 68 1/2 LKS

"CORNER C" BEARING TREES

20" D.FIR BEARS S74"E 13.70'
SCRIBED "1/4 S24 BT"
14 1/2" W.FIR BEARS S48 1/2"W 25.90'
SCRIBED "1/4 S24 BT"
12" W.FIR BEARS N54 1/2"W 15.20'
SCRIBED "1/4 S13 BT"
14" W.FIR BEARS N31 1/2"E 6.40'
SCRIBED "1/4 S13 BT"