

SURVEY NARRATIVE TO COMPLY WITH PARAGRAPH 209.250 OREGON REVISED STATUTES

PURPOSE

TO MARK PROPERTY LINES THAT SEPARATE STATE FOREST LANDS LOCATED IN SECTIONS 6 AND 8, TOWNSHIP 32 SOUTH, RANGE 5 WEST, WILLAMETTE MERIDIAN, FROM BUREAU OF LAND MANAGEMENT LANDS LOCATED IN SECTION 5, TOWNSHIP 32 SOUTH, RANGE 5 WEST, WILLAMETTE MERIDIAN.

PROCEDURE

A RANDOM TRAVERSE USING A LEICA TPS 1101 TOTAL STATION WAS USED TO CONNECT THE CONTROLLING CORNERS. BEARING AND DISTANCE WERE COMPUTED AND OFFSETS CALCULATED TO POINTS ON TRUELINE FOR CARSONITE BOUNDARY MARKERS. ALL CORNER ACCESSORIES WERE MARKED AS OUTLINED IN THE "MANUAL OF INSTRUCTIONS FOR THE SURVEY OF THE PUBLIC LANDS OF THE U.S." 1973. BEARINGS TO ACCESSORIES WERE TAKEN WITH A STAFF COMPASS SET AT 20' EAST MAGNETIC DECLINATION. DISTANCES WERE MEASURED TO AN ALUMINUM NAIL IN BT FACE. FOR A DETAILED REPORT ON FOUND CORNERS SEE COUNTY RECORDS.

BASIS OF BEARING

BUREAU OF LAND MANAGEMENT, 1962, DEPENDENT RESURVEY, EXECUTED BY JOSEPH S. GAWRON AND NORMAN J. MCDONALD UNDER GROUP NO. 472 FROM THE ONE QUARTER CORNER COMMON TO SECTIONS 5 AND 8 TO THE SECTION CORNER COMMON TO SECTIONS 5, 6, 7 AND 8, TOWNSHIP 32 SOUTH, RANGE 5 WEST, WILLAMETTE MERIDIAN.

ONE QUARTER CORNER FOUND
1" IRON ROD (MEHL, 1968) (IN PLACE)
24" CEDAR (1901) S42E 37 LKS (NOW 24" X 2 1/2' HIGH ROTTED STUMP IN PLACE, AXE WORK VISIBLE)
20" CEDAR (1901) N18W 51 LKS (NOW 33" X 2' HIGH ROTTED STUMP IN PLACE, OPEN AND CHOPPED FACE)
6" FIR (1962) S88E 38 1/2 LKS (MISSING)
10" FIR (1962) N78W 54 LKS. RESCRIBED BY T. H. MEHL IN 1968 (NOW 24" IN PLACE, UPPER AND LOWER FACES CLOSED, BLM BTT)

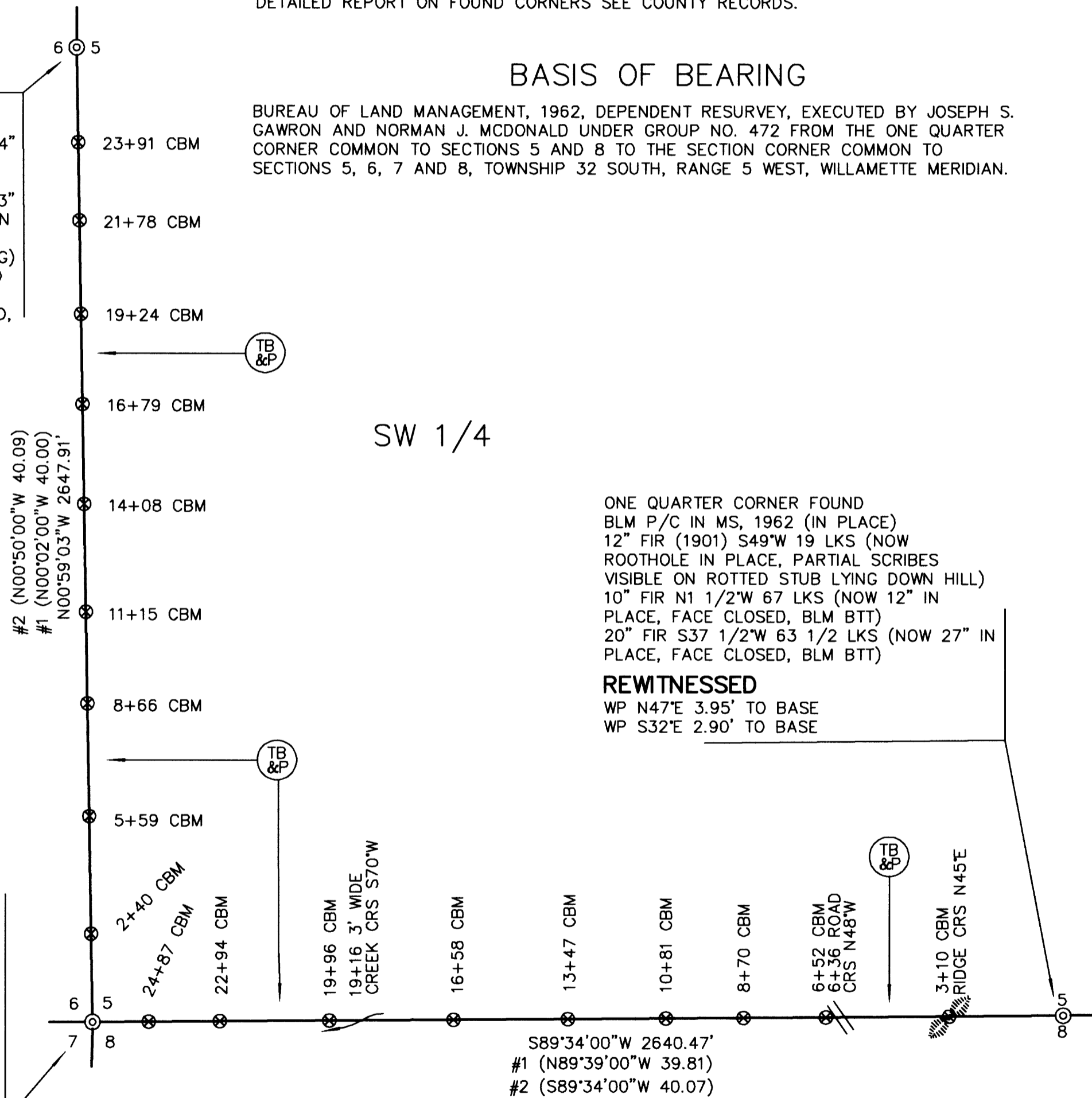
REWITNESSED

WP S53E 3.70' TO BASE
WP S38W 3.80' TO BASE
20" FIR N16E 34.7' TO ALUMINUM NAIL IN BT FACE SCRIBED (1/4S5BT) BTT

SECTION CORNER FOUND
BLM P/C, 1962 (IN PLACE)
36" FIR (1901) N71E 33 LKS (NOW 32" X 2' HIGH ROTTED STUMP IN PLACE, FACE ROTTED, BLM BTT)
12" WHITE FIR (1901) S42E 21 LKS (MISSING)
30" FIR (1901) S20W 60 LKS (NOW 38" X 3 1/2' HIGH ROTTED STUMP IN PLACE, FACE ROTTED, BLM BTT)
28" FIR (1901) N41 1/2W 32 LKS (NOW 35" X 8' HIGH ROTTED STUB IN PLACE, FACE ROTTED, BLM BTT)
6" CHINQUAPIN N65E 35 LKS (MISSING)
6" CEDAR S9E 55 LKS (MISSING)
6" CEDAR S14W 96 LKS (NOW 20" IN PLACE, FACE CLOSED, BLM BTT)
6" FIR N65W 45 LKS (NOW 22" IN PLACE, FACE CLOSED, BLM BTT)

REWITNESSED

21" FIR S55E 27.1' TO ALUMINUM NAIL IN BT FACE SCRIBED (T32SR5WS8BT) BTT
17" FIR N32E 4.6' TO ALUMINUM NAIL IN BT FACE SCRIBED (T32SR5WS5BT) BTT



SURVEY BY:

REGISTERED PROFESSIONAL LAND SURVEYOR

James M. Mcintosh

OREGON JULY 13, 1984 JAMES M. MCINTOSH 2103

JAMES M. MCINTOSH
63612 FIFTH ROAD
COOS BAY, OREGON

EXPIRATION DATE OF CERTIFICATE 12-31-06

FILED

Date: 4-18-2006 By: JC
This survey consists of:
Map: M150-23
Narrative:
Corner Rpt:

DOUGLAS COUNTY SURVEYOR

LEGEND

- BLM P/C = BUREAU OF LAND MANAGEMENT 2 1/2" X 30" IRON PIPE WITH BRASS CAP
- = TRUE BLAZED AND POSTED
- BTT = BEARING TREE TAG
- BT = BEARING TREE
- WP = ORANGE CARSONITE MARKER CBM-250 LABELED WITNESS POST
- = MONUMENT FOUND
- = ORANGE CARSONITE MARKER AND STATION CBM-250 LABELED BOUNDARY MARKER
- WPCP = 4" X 4" X 72" WHITE PAINTED CEDAR POST
- CRS = COURSE
- MS = MOUND OF STONE
- #1 () = RECORD BEARING AND DISTANCE IN CHAINS OSCAR F. THIEL, CONTRACT NO. 729, DATED DECEMBER 24, 1900, AND SPECIAL INSTRUCTIONS DATED SEPTEMBER 12, 1901
- #2 () = RECORD BEARING AND DISTANCE IN CHAINS JOSEPH S. GAWRON AND NORMAN J. MCDONALD, 1962, GROUP NO. 472

I, JAMES M. MCINTOSH, HEREBY CERTIFY THAT THIS SURVEY WAS PREPARED USING HP CARTRIDGE NO. C4871A ON CONTINENTAL NO. JPC4M2 POLYESTER FILM.

James M. Mcintosh DATE: 4-12-06

SURVEY FOR:
STATE OF OREGON - DEPARTMENT OF FORESTRY
SW 1/4 SECTION 5, T.32S., R.5W., W.M.

DOUGLAS COUNTY, OREGON
LEICA TOTAL STATION SURVEY BY:
J.M. MCINTOSH, T. VAN VLEET
AND R.C. HALL
DRAWN BY: T. VAN VLEET
MARCH 30, 2006
SCALE 1" = 300'

