

LONE ROCK TIMBERLAND CO. & FRUIT GROWERS SUPPLY CO.

TOWNSHIP 29 SOUTH, RANGE 5 WEST, W.M. SECTION 36

SURVEY BY LONE ROCK TIMBER MANAGEMENT CO. & DAVID EDWARDS LAND SURVEYING

PO BOX 1127 ROSEBURG, OREGON 97470

DOUGLAS COUNTY, OREGON

SURVEY: BRYANT TRACT

DATE: JANUARY 2006

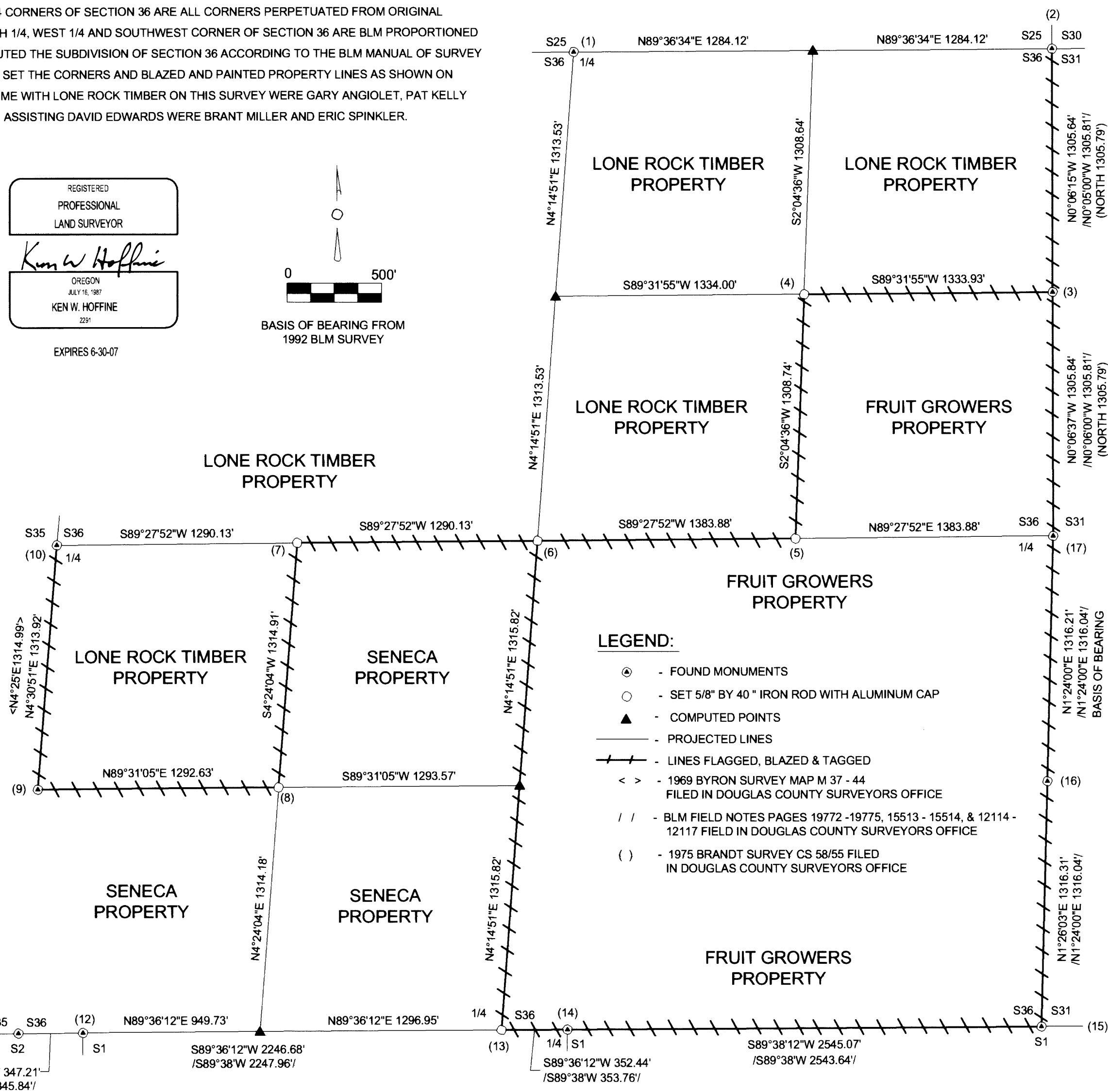
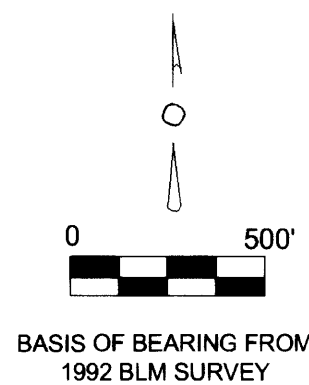
FILED
 Date: 2-21-2006 By: JC
 This survey consists of:
 Map: M149-60
 Name:
 Corner rpt:
 DOUGLAS COUNTY
 SURVEYOR

NARRATIVE:

THIS SURVEY WAS CONDUCTED TO ESTABLISH PROPERTY CORNERS AND PROPERTY LINES FOR TIMBER CUTTING PURPOSES BY ADJACENT OWNERS, LONE ROCK TIMBERLANDS AND FRUIT GROWERS COMPANY. LONE ROCK TIMBER MANAGEMENT COMPANY AND DAVID EDWARDS LAND SURVEYING COOPERATED IN THE FIELD TRAVERSE SURVEYS OF SECTION 36 WITH CLOSED LOOP RANDOM TRAVERSES ALONG THE PROPERTY LINES TO THE CORNERS SHOWN ON THIS MAP. THE NORTHEAST CORNER, SOUTHEAST CORNER AND EAST 1/4 CORNERS OF SECTION 36 ARE ALL CORNERS PERPETUATED FROM ORIGINAL EVIDENCE. THE NORTH 1/4, WEST 1/4 AND SOUTHWEST CORNER OF SECTION 36 ARE BLM PROPORTIONED CORNERS. WE COMPUTED THE SUBDIVISION OF SECTION 36 ACCORDING TO THE BLM MANUAL OF SURVEY OF PUBLIC LANDS, WE SET THE CORNERS AND BLAZED AND PAINTED PROPERTY LINES AS SHOWN ON THIS MAP. ASSISTING ME WITH LONE ROCK TIMBER ON THIS SURVEY WERE GARY ANGIOLET, PAT KELLY AND IGNACIO ROMAN. ASSISTING DAVID EDWARDS WERE BRANT MILLER AND ERIC SPINKLER.

REGISTERED
 PROFESSIONAL
 LAND SURVEYOR

 OREGON
 JULY 16, 1987
 KEN W. HOFFINE
 2291
 EXPIRES 6-30-07



CORNER INFORMATION:

- THE QUARTER CORNER BETWEEN SECTIONS 25 AND 36
 FOUND 1957 BRASS CAP.
 -- 15" FIR STUMP BEARS N12 3/4"W, 6.0 FEET (RECORD N18"W, 7.57 FEET) LOW STUMP CUT BELOW FACE.
 -- 22" FIR STUMP BEARS S67 1/4"W, 58.3 FEET (RECORD S67"W, 58.08 FEET) PARTIAL HEALED FACE VISIBLE.
 CORNER LIES ON NORTH FACING SLOPE IN 2005 CLEAR-CUT.
- THE NORTHEAST SECTION CORNER OF SECTION 36
 FOUND 1957 BRASS CAP.
 -- 1" IRON PIPE BEARS N54°24'02"E, 2.28 FEET (RECORD N60°E, 2.3 FEET)
 -- 20" DEAD OAK BEARS S70°E, 21.1 FEET AS PER RECORD
 -- 18" DOWN MADRONE BEARS N17°W, 9.9 FEET TO ROOT HOLE AS PER RECORD
 -- 15" DOUGLAS FIR BEARS N58°E, 42.2 FEET AS PER RECORD
 -- 16" DOUGLAS FIR BEARS S31 1/2"E, 30.4 FEET AS PER RECORD
 -- 18" DOUGLAS FIR STUMP BEARS N46 1/4"W, 32.2 FEET AS PER RECORD
 CORNER LIES ON WEST SLOPE BLAZED LINE RUNNING SOUTH FROM CORNER.
- THE NORTH 1/16 CORNER BETWEEN SECTION 31 AND 36
 FOUND 1992 BLM BRASS CAP.
 -- 24" DOUGLAS FIR BEARS N66 3/4"E, 22.2 FEET (RECORD N65 3/4"E, 22.44 FEET) HEALED FACE AND TAG
 -- 24" DOUGLAS FIR BEARS N2°W, 33.0 FEET (RECORD N3 1/4"W, 33.0 FEET) HEALED FACE AND TAG
 CORNER LIES ON NORTHWEST SLOPE WITH LARGER BLM TIMBER TO EAST.
- THE NORTHEAST 1/16 CORNER OF SECTION 36
 SET 5/8" X 40" IRON ROD WITH 2 1/2" ALUMINUM CAP MARKED LONE ROCK TIMBER NE 1/16 S36 2006 PLS 2291.
 -- 18" DOUGLAS FIR BEARS N85 1/2"W, 31.8 FEET, WE SCRIBE NE 1/16 S36 B.T. AND TAG
 -- 15" DOUGLAS FIR BEARS N52 1/2"E, 34.1 FEET, WE SCRIBE NE 1/16 S36 B.T. AND TAG
 CORNER LIES ON NORTHWEST SLOPE APPROXIMATELY 75 FEET EAST OF SMALL SWALE. BLAZED LINES RUN EAST AND SOUTH FROM CORNER.
- THE CENTER EAST 1/16 CORNER OF SECTION 36
 SET 5/8" X 40" IRON ROD WITH 2 1/2" ALUMINUM CAP MARKED LONE ROCK TIMBER CE 1/16 S36 2006 PLS 2291.
 -- 15" DOUGLAS FIR BEARS S23 1/4"W, 17.5 FEET, WE SCRIBE CE 1/16 S36 B.T. AND TAG TREE
 -- 22" DOUGLAS FIR BEARS N47°W, 12.3 FEET, WE SCRIBE CE 1/16 S36 B.T. AND TAG TREE
 CORNER LIES ON EAST FACING SLOPE APPROXIMATELY 100 FEET WEST OF DRAW.
- THE CENTER 1/4 CORNER OF SECTION 36
 SET 5/8" X 40" IRON ROD WITH 2 1/2" ALUMINUM CAP MARKED LONE ROCK TIMBER T29S R5W C1/4 S36 2006 PLS 2291.
 -- 9" DOUGLAS FIR BEARS N23 1/4"W, 43.3 FEET, WE SCRIBE C 1/4 S36 B.T. AND TAG TREE
 -- 4" DOUGLAS FIR BEARS S35 1/2"W, 13.3 FEET, WE SCRIBE C 1/4 S36 B.T. AND TAG TREE
 -- 25" DOUGLAS FIR BEARS S0 3/4"E, 41.9 FEET, WE SCRIBE C 1/4 S36 B.T. AND TAG TREE
 -- 4" DOUGLAS FIR BEARS N71 1/4"E, 14.3 FEET, WE SCRIBE C 1/4 S36 B.T. AND TAG TREE
 CORNER LIES ON STEEP WEST FACING SLOPE. METAL POST APPROX. 2 FOOT SOUTH
- THE CENTER WEST 1/16 CORNER OF SECTION 36
 SET 5/8" X 40" IRON ROD WITH 2 1/2" ALUMINUM CAP MARKED LONE ROCK TIMBER CW 1/16 S36 2006 PLS 2291.
 -- 20" DOUGLAS FIR BEARS N49 1/4"W, 57.3 FEET, WE SCRIBE CW 1/16 S36 B.T. AND TAG TREE
 -- 10" DOUGLAS FIR BEARS N85 1/2"W, 46.7 FEET, WE SCRIBE CW 1/16 S36 B.T. AND TAG TREE
 CORNER LIES ON FLAT APPROXIMATELY 60 FEET EAST OF CREEK AND AT WEST EDGE OF OLD ABANDONED ROAD. PUT METAL FENCE POST APPROXIMATELY 0.5 FEET NORTH OF CORNER.
- THE SOUTHWEST 1/16 CORNER OF SECTION 36
 SET 5/8" X 40" IRON ROD WITH 2 1/2" ALUMINUM CAP MARKED LONE ROCK TIMBER SW 1/16 S36 2006 PLS 2291.
 -- 11" DOUGLAS FIR BEARS S32 3/4"E, 21.0 FEET, WE SCRIBE SW 1/16 S36 B.T. AND TAG TREE
 -- 14" DOUGLAS FIR BEARS N20°W, 11.6 FEET, WE SCRIBE SW 1/16 S36 B.T. AND TAG TREE
 CORNER LIES ON STEEP EAST FACING SLOPE APPROXIMATELY 150 FEET WEST OF DRAW. PUT METAL FENCE POST APPROXIMATELY 1.0 FEET NORTH OF CORNER.
- THE SOUTH 1/16 CORNER BETWEEN SECTIONS 35 AND 36
 FOUND 1969 BLM BRASS CAP.
 -- 31" DOUGLAS FIR BEARS S47 3/4"W, 47.7 FEET (RECORD S48"W, 47.5 FEET) HEALED FACE AND TAG
 -- DEAD MADRONE BEARS N82 3/4"W, 54.5 FEET (RECORD N82"W, 54.5 FEET) VISIBLE SCRIBING AND TAG
 -- NEW BEARING TREE 15" DOUGLAS FIR BEARS S75 3/4"E, 26.3 FEET, WE SCRIBE S1/16 S36 B.T. AND TAG TREE
 CORNER LIES ON STEEP NORTH SLOPE AT NORTH EDGE OF OLD SKID ROAD.
- THE QUARTER CORNER BETWEEN SECTIONS 35 AND 36
 FOUND 1957 BLM BRASS CAP.
 -- 24" DOUGLAS FIR BEARS S52 1/4"W, 70.8 FEET (RECORD S50 3/4"W, 72.6 FEET) WELL HEALED FACE AND TAG
 -- 20" DOUGLAS FIR RECORD N54 1/2"E, 225.06 FEET FOUND WELL HEALED FACE AND TAG. DID NOT MEASURE TO CORNER LIES ON STEEP EAST FACING SLOPE.
- THE SOUTHWEST CORNER OF SECTION 36
 FOUND 1957 BRASS CAP.
 -- 14" FIR BEARS N87 1/2"W, 27.72 FEET AS PER RECORD
 -- 23" FIR BEARS N86°E, 29.04 FEET AS PER RECORD
- CLOSING CORNER FOR SECTION 1 AND 2, TOWNSHIP 30 SOUTH, RANGE 5 WEST
 FOUND 1969 BLM BRASS CAP.
 -- 24" FIR BEARS S32 1/4"E, 54.8 FEET AS PER RECORD
 -- 19" FIR BEARS S7 1/4"W, 85.8 FEET AS PER RECORD
- THE SOUTH 1/4 CORNER FOR SECTION 36 ONLY, TOWNSHIP 29S, RANGE 5 WEST
 SET 5/8" X 40" IRON ROD WITH 2 1/2" ALUMINUM CAP MARKED LONE ROCK TIMBER T29S R5W 1/4 S36, T30S, R5W 2006 PLS 2291.
 -- 12" DOUGLAS FIR BEARS N47°E, 11.1 FEET, WE SCRIBE T29S R5W 1/4 S36 B.T. AND TAG TREE
 -- 13" DOUGLAS FIR BEARS N38°E, 27.7 FEET, WE SCRIBE T29S R5W 1/4 S36 B.T. AND TAG TREE
 -- 20" DOUGLAS FIR BEARS N23 1/2"W, 31.8 FEET, WE SCRIBE T29S R5W 1/4 S36 B.T. AND TAG TREE
 -- 14" DOUGLAS FIR BEARS N58 3/4"W, 24.5 FEET, WE SCRIBE T29S R5W 1/4 S36 B.T. AND TAG TREE
 CORNER SITS ON SOUTH FACING SLOPE APPROXIMATELY 1.5 FEET NORTH OF EAST-WEST FENCE LINE. METAL FENCE POST BEARS APPROXIMATELY NORTH 1.8 FEET.
- THE NORTH 1/4 CORNER FOR SECTION 1, TOWNSHIP 30 SOUTH, RANGE 5 WEST
 FOUND 1969 BLM BRASS CAP.
 -- 20" FIR HIGH TIN COVERED STUMP BEARS S81 1/4"E, 34.32 FEET AS PER RECORD
 -- 30" FIR TIN COVERED STUMP BEARS S16 1/2"W, 47.19 FEET AS PER RECORD
 PUT 6 FOOT STEEL POST EAST 2.0 FEET.
- THE SOUTHEAST CORNER OF SECTION 36
 FOUND 1957 BRASS CAP.
 -- 15" CEDAR SNAG BEARS N75°E, 1.98 FEET AS PER RECORD
 -- 34" CEDAR STUMP BEARS S65°E, 44.22 FEET AS PER RECORD
 -- 28" CEDAR BEARS S75°W, 23.1 FEET (RECORD S78°W, 23.1 FEET)
 -- 46" FIR STUMP BEARS S79 1/2"E, 11.2 FEET (RECORD S80°E, 9.5 FEET) PARTIAL BARK SCRIBING
 PUT 6 FOOT STEEL POST APPROXIMATELY 2.0 FEET NORTH
- THE SOUTH 1/16 CORNER BETWEEN TOWNSHIP 29 SOUTH, RANGE 5 WEST, SECTION 36 AND TOWNSHIP 29 SOUTH, RANGE 4 WEST, SECTION 31
 FOUND 1992 BLM BRASS CAP.
 -- 20" FIR BEARS N4 1/2"E, 43.89 FEET AS PER RECORD
 -- 12" MAPLE BEARS S55°W, 16.5 FEET AS PER RECORD
- THE QUARTER CORNER BETWEEN TOWNSHIP 29 SOUTH, RANGE 5 WEST, SECTION 36 AND TOWNSHIP 29 SOUTH, RANGE 4 WEST, SECTION 31
 FOUND 1992 BLM BRASS CAP.
 -- 24" FIR BEARS S32°W, 15.84 FEET AS PER RECORD
 -- 10" MAPLE BEARS S33°E, 40.92 FEET AS PER RECORD
 -- 52" DECAYED STUMP BEARS S66°E, 5.94 FEET AS PER RECORD
 PUT 6 FOOT STEEL POST APPROXIMATELY NORTH 2.0 FEET.

MAP FILE M149-60

MAP FILE M149-60