

PREPARED FOR
 SENECA JONES TIMBER COMPANY
 PO BOX 10265
 EUGENE, OR 97440

RECORD OF SURVEY

LOCATED IN SECTION 10, TOWNSHIP 21 SOUTH, RANGE 7 WEST,
 WILLAMETTE MERIDIAN, DOUGLAS COUNTY, OREGON
 JANUARY 16, 2006

FILED
 DATE: 2-6-2006 BY: JC
 MAP: M149-47
 NARRATIVE:
 CORNER RPT:
 DOUGLAS COUNTY SURVEYOR

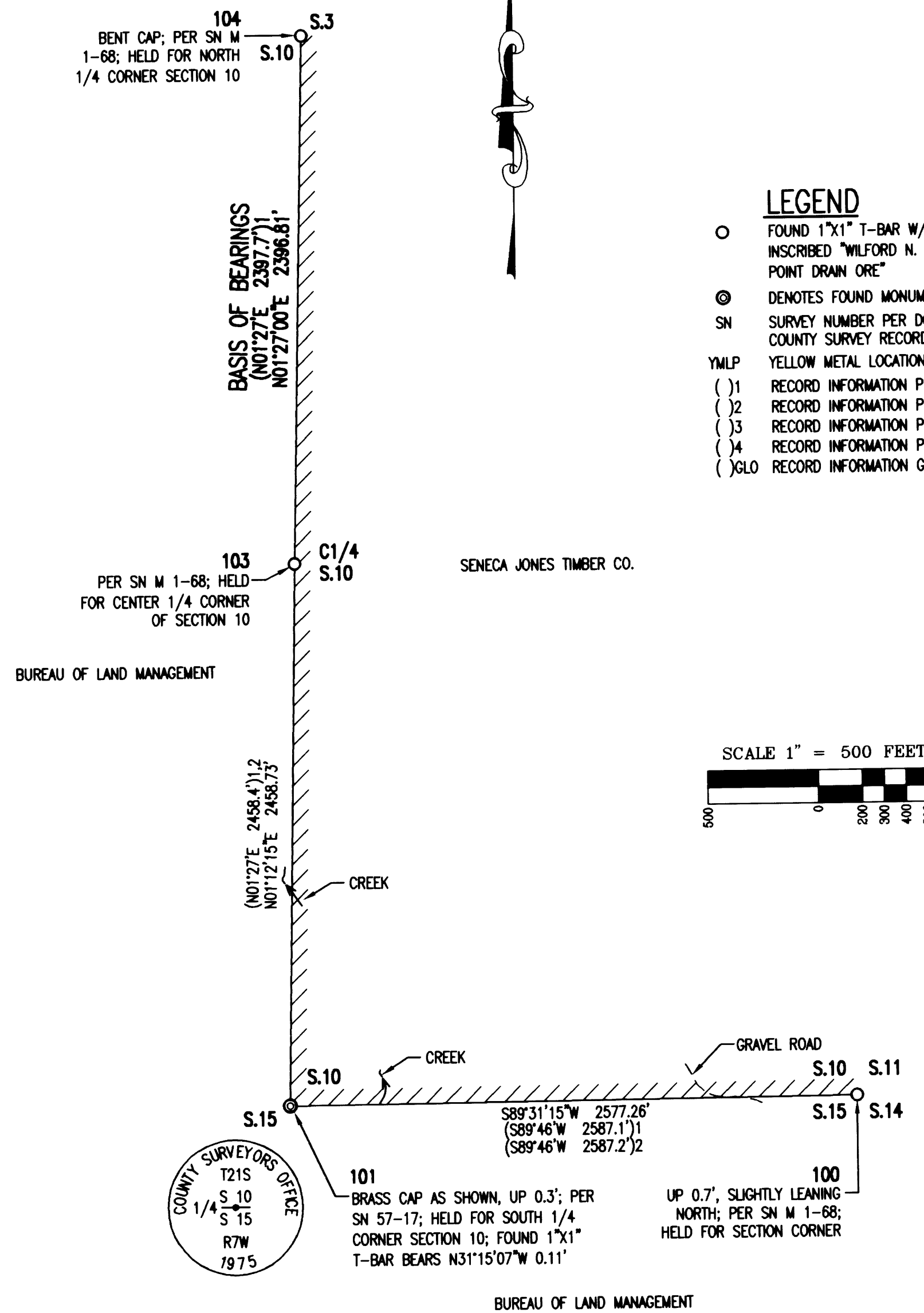
NARRATIVE

THE PURPOSE OF THIS SURVEY WAS TO ESTABLISH THE NORTH-SOUTH CENTERLINE OF SECTION 10 AND THE EASTERLY SOUTH SECTION LINE OF SECTION 10 AND TO BLAZE AND MARK THE LINES AS SHOWN. THE BASIS OF BEARINGS IS THE NORTH 1/4 SECTION LINE AS SHOWN.

THE EASTERLY SOUTH SECTION LINE OF SECTION 10 WAS ESTABLISHED BY HOLDING FOUND MONUMENT 100 AT THE SOUTHEAST SECTION CORNER AND HOLDING FOUND MONUMENT 101 AT THE SOUTH 1/4 CORNER.

THE NORTH SOUTH CENTERLINE OF SECTION 10 WAS ESTABLISHED BY HOLDING FOUND MONUMENT 101 AT THE SOUTH 1/4 CORNER AND FOUND MONUMENT 103 AT THE CENTER 1/4 CORNER FOR THE SOUTH 1/4 SECTION LINE AND HOLDING FOUND MONUMENT 103 AT THE CENTER 1/4 CORNER AND FOUND MONUMENT 104 AT THE NORTH 1/4 CORNER FOR THE NORTH 1/4 SECTION LINE.

THE LINE WAS MARKED BY BLAZING TREES ON BOTH SIDES OF THE LINE, PAINTING THE BLAZES RED, HANGING RED SURVEYOR'S RIBBON ON LINE AND SETTING METAL POSTS ON LINE. FOUND BEARING TREE BEARINGS AND DISTANCES ARE TO TREE (OR STUMP) CENTER. NEW BEARING TREES WERE SCRIBED, PAINTED RED AND POSTED WITH YELLOW METAL LOCATION POSTERS.



JOB NAME:	T21S, R7W, S10	ENGINEERING • PLANNING • SURVEYING • FORESTRY
JOB NUMBER:	1470	LICENSED IN OR & WA
DRAWN BY:	JOH	AKS ENGINEERING & FORESTRY
CHECKED BY:	NSW	13910 SW GALBREATH DRIVE, SUITE 100 SHERWOOD, OR 97140 PHONE: (503) 925-8799 FAX: (503) 925-8969
DRAWING NO.:	1470ROS	

2-1-06
 REGISTERED PROFESSIONAL LAND SURVEYOR

 OREGON
 JUL 10, 1994
 KEITH R. JEHNKE
 2619
 EXPIRES 6/30/07
 I CERTIFY THAT THIS SURVEY WAS PREPARED USING HP PRODUCT #51645A CARTRIDGE ON OCE #868342.

MAP FILE M149-47

MAP FILE M149-47