

RECORD OF SURVEY

for **SWANSON GROUP, INC.**

in the S1/2 SECTION 9, T25S, R4W, W.M.  
and the SW1/4 SECTION 10, T25S, R4W, W.M.

DOUGLAS COUNTY, OREGON

JULY 31, 2003

FILED

Date: 2-3-2006 By: JC

Survey consists of:  
Map M149-43

Control: \_\_\_\_\_

DOUGLAS COUNTY  
SURVEYOR

Scale: 1" = 400'



NARRATIVE

The purpose of this survey is to reestablish the Northeast corner of Parcel 1 of Document No. 2002-026067 of the Douglas County Deed Records, and to mark the indicated boundary lines.

The Northeast corner (corner No. 1) of the above noted deed is called to be a 4" X 6" post with BT's by said deed. M4-25 calls this point to be a 4" X 4" post with the same BT's as the deed. M80-16 found a 1" iron pipe at this point. M11-2 and M4-25 give a bearing and distance from the 1/4 corner of Sections 9 and 16 to this point. All of the above noted surveys and deeds call for this point to be on the South line of Donation Land Claim No. 49.

We found no trace of the wood post or iron pipe at this corner, but did find 2 of the BT's. We set a 3/4" iron pipe at record distance from the center of these BT's. We tied to the Southwest and Southeast corners of Claim No. 49 to verify that monuments set and found are actually on the Claim line. All monuments were found to be very nearly on the Claim line, and have been accepted as angle points along said line.

The parcel to the East (as described by Book 1684, Page 732) calls for the intersection of the North-South centerline of Section 9 with the South line of Claim No. 49 (NE corner of Lot 6 of Section 9). That point would fall S89°27'24"W, 17.85 feet from corner (1) as per the subdivision of Section 9 by M115-62. However, M4-25 and M11-2 both indicate that corner (1) is the NE corner of Lot 6, and would therefore be a common corner between Book 1684, Page 732 and Document No. 2002-026067. This would indicate an error on M11-2 and M4-25 or a possible error in the position of the 1/4 corner of Sections 9 and 16. In either case corner (1) has been accepted as the NE corner of Lot 6 since 1915, and we have also accepted it as such.

(1) ANGLE POINT NO. 1 - SECTION 9

Set 3/4" X 30" iron pipe with plastic cap (LS 1084) at distance-distance intersection from center of found BT's.  
BT's found (per M4-25):

12" Rotted Fir Stub, N82°12'W, (N86°38'W, 6.4 ft.) Axe work visible  
18" Rotted Fir Remains, S27°26'W, (S27°37'W, 3.6 ft.) Axe work visible

BT's set:

8" Fir, N26°W, 10.2 ft. Marked: "API S9 BT"  
18" Fir, S50°W, 24.2 ft. Marked: "API S9 BT"

Corner lies on steep North slope, 50' North of ridge, at fence corner.

C1/4 CORNER SECTION 9  
Found brass cap (M115-62)

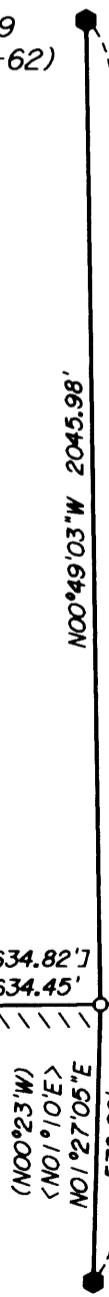
- Monuments found as noted
  - Found 5/8" iron rod as per M80-16
  - Monuments set as noted
  - ( ) Data of record as per M11-2
  - [ ] Data of record as per M80-16
  - £ } Data of record as per M115-62
  - < > Data of record as per M4-25
  - //// Boundary lines posted (with 6' steel posts), blazed, and painted.
- Iron pipe diameters are inside measure  
BT distances measured are to center of tree

SW CORNER DLC 49  
Found 5/8" iron rod (RM3-1)

N89°26'50"E 1318.53'  
[N89°29'15"E, 1318.58']

2002-026067

(A) = N89°26'18"E 300.03' [N89°29'15"E, 300.24']



N89°27'00"E 5733.12'  
(N89°27'E, 5745.5')  
BASIS OF BEARINGS PER M11-2

BOOK 1684, PAGE 732

1/4 CORNER SECTIONS 9 & 16  
Found BLM brass cap (1957)

SURVEYED BY:  
PETERSON & ASSOCIATES  
8155 NW MITCHEL DRIVE  
CORVALLIS, OREGON 97330  
PHONE: 541-757-1794

REGISTERED  
PROFESSIONAL  
LAND SURVEYOR

OREGON  
JULY 31, 1976  
JIM S. PETERSON  
1084

RENEWAL: 12-31-06

SE CORNER DLC 49  
Found Douglas County  
brass cap (1965)