

RECORD OF SURVEY

for **SWANSON GROUP, INC.**

in the E1/2 SECTION 17, T25S, R4W, W.M.
and in D.L.C. NO. 41, T25S, R4W, W.M.
DOUGLAS COUNTY, OREGON
AUGUST 1, 2003

FILED

Date: 2-3-2006 By: J.C.

This survey consists of:

Map: M149-42

Name:

Corner Rpt:

DOUGLAS COUNTY
SURVEYOR

Scale: 1" = 200'



NARRATIVE

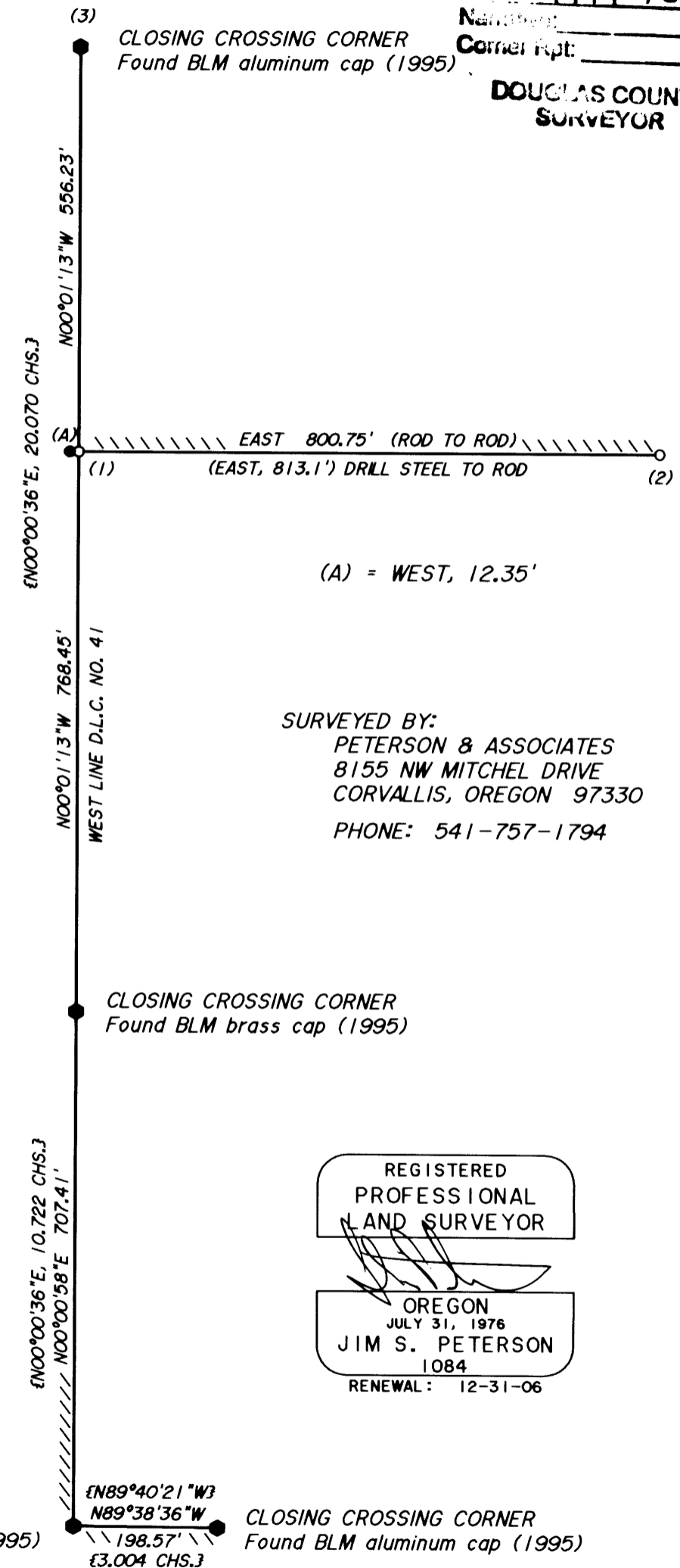
The purpose of this survey is to reestablish the most Westerly Northwest corner (corner No. 1) of Document No. 2002-026067 of the Douglas County Deed Records, and the interior deed corner which is 813.1 feet East of the drill steel. We also marked the indicated boundary lines.

The Closing Crossing Corner (SE corner Lot 2, Section 17) (corner No. 3) as set by M11-3, was rejected by the BLM Resurvey in 1995 due to improper procedures. The BLM set a new monument as noted.

Near corner No. 1 we found a 3/4" drill steel set by M11-3 to be disturbed. We also found the BT to this corner (as noted on M4-25) with axe marks visible. We reset the drill steel at record bearing and distance (as per M4-25) from the center of this BT (a 26" Fir Stump, S56°40'W, 41.5 feet.) We then set corner No. 1 on the West line of Claim No. 41, at a point East of the drill steel.

M11-3 set a 3/4" iron pipe with a BT at corner No. 2. We found no trace of either. We tied to a 3/4" pipe shown as 670 feet Northerly of corner No. 2 on M11-3. The actual distance between corner No. 2 and said pipe is almost 7 feet longer than record. Since the other monuments we tied from M11-3 fit very well with one another we chose not to hold said pipe for control to reset corner No. 2. We therefore set corner No. 2 at record bearing and distance from the drill steel.

The basis of bearings for this survey is from the SW corner of Claim No. 41 to the center of the BT to the drill steel. Record data as computed from M4-25 is N01°51'24"W, 1454.61 ft. Our bearing and distance is N01°51'24"W, 1453.82 ft.



SURVEYED BY:
PETERSON & ASSOCIATES
8155 NW MITCHEL DRIVE
CORVALLIS, OREGON 97330
PHONE: 541-757-1794

(1) ANGLE POINT NO. 1 - SECTION 17

Set 5/8" X 30" iron rod with plastic cap (LS 1084)

BT's set:

14" Fir, S39°W, 29.6 ft. Marked: "AP1 S17 BT"

18" Fir, N24°W, 11.5 ft. Marked: "AP1 S17 BT"

Corner lies on SE slope.

(2) ANGLE POINT NO. 2 - SECTION 17

Set 5/8" X 30" iron rod with plastic cap (LS 1084)

BT's set:

8" Alder, N74°E, 36.5 ft. Marked: "AP2 S17 BT" in bark

14" Alder, S54°E, 24.3 ft. Marked: "AP2 S17 BT" in bark

Corner lies 10' West of gravel road.

- Monuments found as noted
 - 3/4" drill steel (see NARRATIVE)
 - Set 5/8" X 30" iron rod with plastic cap (LS 1084)
 - \\\\\\ Boundary lines marked
 - () Data of record per M4-25
 - { } Data of record per 1995 BLM resurvey
- BT distances measured are to center of tree

REGISTERED
PROFESSIONAL
LAND SURVEYOR

OREGON
JULY 31, 1976
JIM S. PETERSON
1084
RENEWAL: 12-31-06

MAP FILE M149-42

MAP FILE M149-42