

**NARRATIVE:**

THE PURPOSE OF THIS SURVEY WAS TO MONUMENT THE N 1/16 CORNER COMMON TO SECTIONS 25 AND 26 AND TO POST, BLAZE AND PAINT THE SILVER BUTTE TIMBER COMPANY BOUNDARY LINES ALONG THE NORTH, EAST AND WEST LINES OF SECTION 26 AS SHOWN ON THE FACE OF THE MAP.

A LEAST SQUARES ADJUSTED GPS CONTROL SURVEY WAS COMPLETED RANDOM TRAVERSE LOOPS WERE SURVEYED BETWEEN THE GPS CONTROL POINTS, CONTROLLING CORNERS AND ALONG THE LINES POSTED. THE SURVEY WAS CONTROLLED BY THE NE CORNER, NW CORNER, N 1/4 CORNER AND E 1/4 CORNER WHICH WERE FOUND AS REMONUMENTED AND RESTORED IN THEIR ORIGINAL POSITIONS. THE W 1/4 CORNER WAS FOUND AS REESTABLISHED BY THE METHOD OF IRREGULAR BOUNDARIES BY THE USBLM IN A 1972 DEPENDENT RESURVEY. THE M 4-75 CORNER AT THE W 1/4 CORNER AND THE N 1/16 CORNER OF S27/S26 WERE NOT ACCEPTED BY THE USBLM IN 1972 AND WERE NOT SEARCH FOR UNDER THIS SURVEY. THE S 1/16 CORNER OF SECTIONS 27 AND 26 WAS FOUND AS ESTABLISHED BY THE USBLM IN A 1972 DEPENDENT RESURVEY. I SET THE N 1/16

OF SECTIONS 26 AND 25 AT THE MIDPOINT OF THE NORTH 1/2 OF THE EAST LINE. THIS SURVEY WAS PERFORMED BY LES FANNING, ADAM DEGROOT AND JERED CARPENTER USING LEICA GPS 1200 RECEIVERS AND A LEICA TPS 1200 TOTAL STATION WITH COMPUTATIONS AND DRAFTING BY KRIS DEGROOT.

**CORNER DESCRIPTIONS:**

ALL NEW BEARING TREES HAVE DOUBLE BLAZED FACES WITH A BRASS WASHER STAMPED "PLS 1941" NAILED INTO THE LOWER BLAZE. BEARINGS ARE TAKEN TO THE CENTER OF THE TREE AT THE ROOT CROWN AND DISTANCES ARE MEASURED TO A NAIL IN THE ROOT CROWN AT THE SIDE AND CENTER OF THE TREE WITH A TOTAL STATION. ALL BEARING TREES HAVE A 6" RED BAND PAINTED AROUND THE TREE AND THE BLAZED FACE PAINTED RED AND BEARING TREE SIGNS NAILED TO THE TREE.

**① S23/S24/S25/S26**

FOUND A 1 1/4" IRON PIPE BY POWELL IN 1966, FIRMLY SET, PROJECTING 15" ABOVE THE GROUND, WITH A 2 1/2" BRASS CAP STAMPED;  
COUNTY SURVEYORS OFFICE  
T31S R4W

S23/S24  
S26/S25

1966

FROM WHICH AN ORIGINAL BEARING TREE BY BUSHEY IN 1893:

A 28" D. FIR STUMP BEARS N.71°45'W., 43.5 FT. WITH NO VISIBLE FACE (REC. N.71 1/2° W, 66 1/2 LKS.)

AND A BEARING TREE BY MARKHAM IN 1958 PER CS 42/391::

A 28" D. FIR BEARS N.44°30'E., 19.3 FT., WITH A HEALED BLAZE.(REC. N.50°E., 20.0 FT.)

AND A BEARING TREE BY POWELL IN 1966 PER CS 54/20:

A 36" SPLINTERED D. FIR SNAG BEARS S.88°W., 56.2 FT. WITH SCRIBE MARKS "T31S R4W S26 CSBT" VISIBLE. (REC. S.88°W., 57.3 FT.)

**② 1/4 S23/S26**

FOUND A 1 1/4" IRON PIPE BY POWELL IN 1966, FIRMLY SET, PROJECTING 12" ABOVE THE GROUND, WITH A 2 1/2" BRASS CAP STAMPED;  
COUNTY SURVEYORS OFFICE  
T31S R4W

S23  
1/4 S26  
1966

FROM WHICH AN ORIGINAL BEARING TREES BY BUSHEY IN 1893:

A 30" D. FIR STUMP BEARS S.46°W., 16.0 FT. WITH SCRIBE MARKS "1/4 S" VISIBLE ON AN OPENED BLAZE (REC. S.44°W, 16.0 FT.)

A 19" MAPLE BEARS N.27°W., 21.9 FT., WITH A HEALED BLAZE.(REC. N.28°W., 22.1 FT.)

AND A NEW BEARING TREE:

A 8 D. FIR BEARS S.72°30'W., 30.4 FT. SCRIBED "1/4 S26 BT".

**③ N 1/16 S26/S25**

SET A 5/8" X 30" IRON ROD 26" IN GROUND WITH A 2" ALUMINUM CAP STAMPED:

T31S R4W

N 1/16

S26/S25

2005

PLS 1941

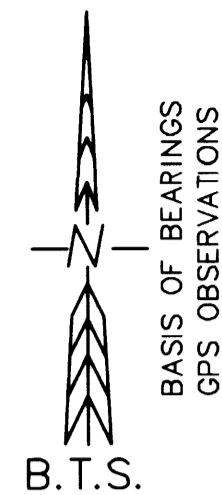
FROM WHICH BEARING TREES PER A 1980 UNRECORDED USBLM ADMINISTRATIVE SURVEY:

A 20" D. FIR BEARS N.85°45'W., 26.3 FT. WITH A HEALED BLAZE.

A 14" D. FIR BEARS N.6°30'E., 27.6 FT. WITH A HEALED BLAZE.

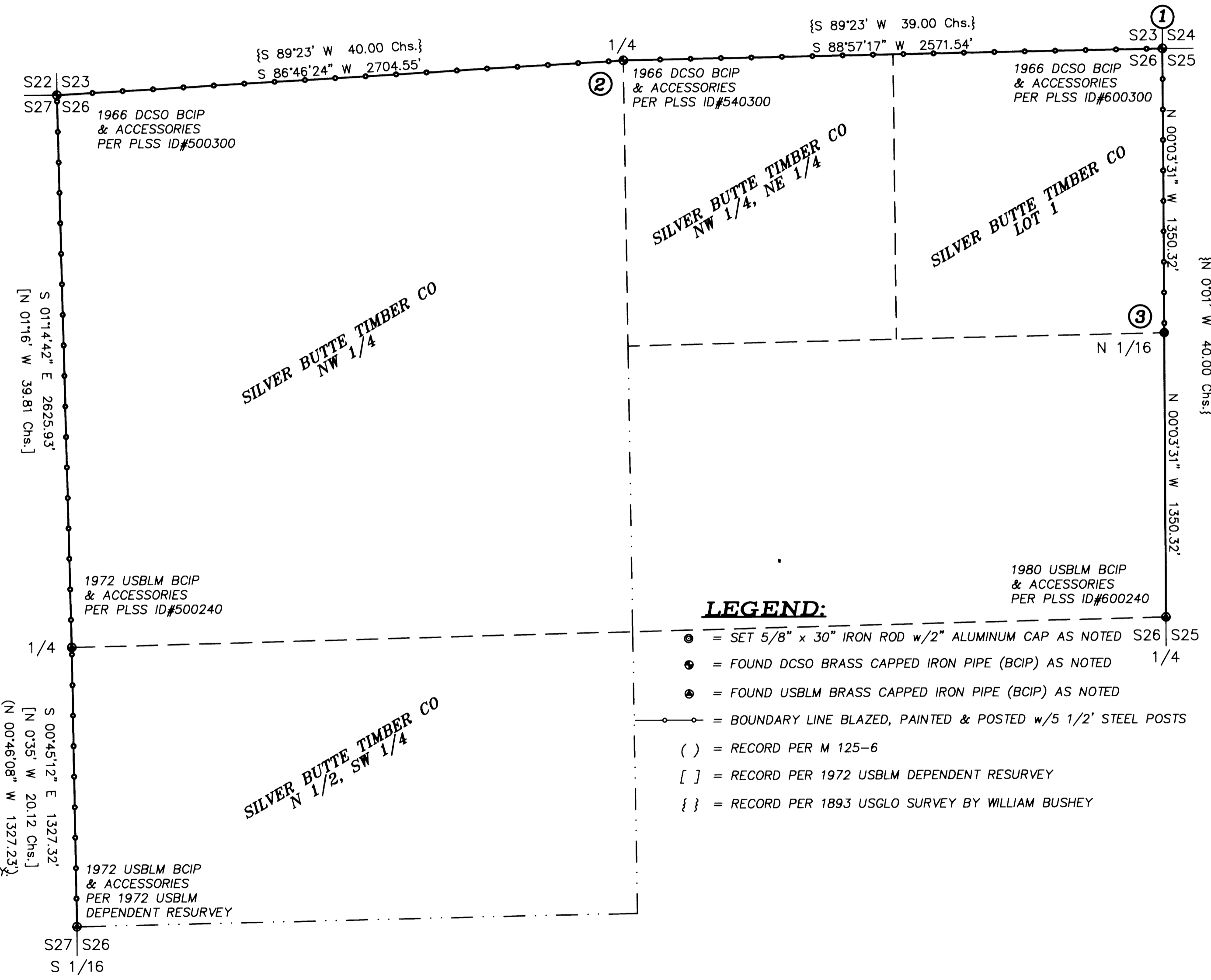
# RECORD OF SURVEY

LOCATED IN  
SECTION 26, T.31S., R.4W., W.M.  
DOUGLAS COUNTY, OREGON



FILED  
Date: 2-2-2006 By: JC  
Title: Record of Survey of:  
Map: M149-41  
No.:  
County: DOUGLAS COUNTY  
SURVEYOR

MAP FILE M149-41



**LEGEND:**

- = SET 5/8" x 30" IRON ROD w/2" ALUMINUM CAP AS NOTED S26/S25
- = FOUND DCSO BRASS CAPPED IRON PIPE (BCIP) AS NOTED 1/4
- = FOUND USBLM BRASS CAPPED IRON PIPE (BCIP) AS NOTED
- = BOUNDARY LINE BLAZED, PAINTED & POSTED w/5 1/2" STEEL POSTS
- ( ) = RECORD PER M 125-6
- [ ] = RECORD PER 1972 USBLM DEPENDENT RESURVEY
- { } = RECORD PER 1893 USGLO SURVEY BY WILLIAM BUSHEY

REGISTERED  
PROFESSIONAL  
LAND SURVEYOR

*Kristian O. Degroot*

OREGON  
JULY 17, 1981  
KRISTIAN O. DEGROOT  
1941

RENEWAL DATE: 12-31-07

**BTS ENGINEERING & SURVEYING, INC.**  
431 S.E. MAIN ST., ROSEBURG, OR 97470  
PHONE (541) 673-0966 FAX (541) 673-0105

SCALE: 1" = 400'  
DATE: JANUARY 31, 2006

FOR:  
SILVER BUTTE TIMBER CO.  
P.O. BOX 4  
RIDDLE, OR 97469

JOB #: 05-042  
FILE: 31-04-26.dwg  
SHEET 1 OF 1

MAP FILE M149-41