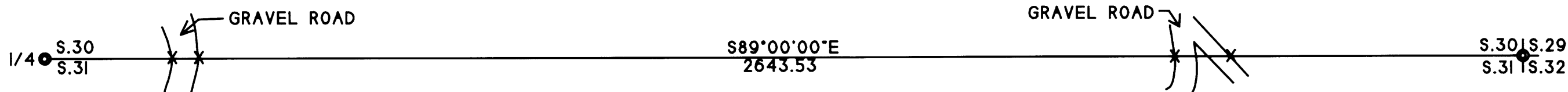


BOUNDARY SURVEY
 LOCATED ALONG THE E1/2 OF THE SOUTH LINE OF SECTION 30.
 T.24S.. R.6W.. W.M.. DOUGLAS COUNTY, OREGON

FILED
 Date: 7-11-2005 By: JC
 This survey consists of:
 Map: M148-8
 Narrows:
 Corner Rpt:

DOUGLAS COUNTY
 SURVEYOR

MAP FILE M148-8



FD. 1970 COUNTY BRASS CAP
 PER C.S. FILE 52/102
 AND RECORD BT'S PER M122-70 IN PLACE

FD. A 1958 COUNTY BRASS CAP
 PER C.S. FILE 49/83
 THE RECORD 24" FIR - NOW A STUMP
 WITH A HEALED FACE
 THE RECORD 20" FIR - NOW A STUMP - NO MARKS
 THE RECORD 7" FIR - GONE
 THE RECORD 23" FIR(NOW 28") IN GOOD CONDITION
 SCRIBED "S30 BT" ON A 20" DF - BEARS N39°W. 11.8 FT.
 SCRIBED "S31 BT" ON AN 18" DF - BEARS S49°W. 10.0 FT.

LEGEND

- ⊙ FD. CORNER AS SHOWN
- LINES FLAGGED, BLAZED, AND MARKED WITH 5 1/2' STEEL POSTS
- X CROSSING POST



BASIS OF BEARING - MAGNETIC
 DECLINATION - 17°E

MAY 24, 2005
 SCALE 1" = 200'

SURVEY FOR:

SENECA JONES TIMBER COMPANY
 P.O. BOX 2129
 ROSEBURG, OR 97470

SURVEY BY:

MULKINS & RAMBO, LLC
 P.O. BOX 809
 NORTH BEND, OR 97459

NARRATIVE

THE PURPOSE OF THIS SURVEY WAS TO MARK THE LINES AS SHOWN FOR FUTURE FUTURE FOREST OPERATIONS.
 CONTROL WAS BASED ON C.S. FILE 49/83, 52/102 AND M122-70.
 ALL NEW BEARING TREES WERE MEASURED TO A 6" SPIKE AT SIDE CENTER BASE. BEARINGS WERE MEASURED WITH A HAND COMPASS WITH A DECLINATION OF 17° EAST.
 THE FIELD WORK WAS PERFORMED BETWEEN BY TROY RAMBO, CLYDE MULKINS, AND CHARLEY PERINI BETEEN APRIL 12 AND MAY 23, 2005.

REGISTERED
 PROFESSIONAL
 LAND SURVEYOR

Troy Rambo
 OREGON
 JULY 14, 1998
 TROY J. RAMBO
 2865

EXPIRES 12-31-06

MAP FILE M148-8