

FILED
 Date: 10-17-2005 By: JC
 This survey consists of:
 Map: M148-53
 Narrative:
 Corner Rpt:
DOUGLAS COUNTY
SURVEYOR

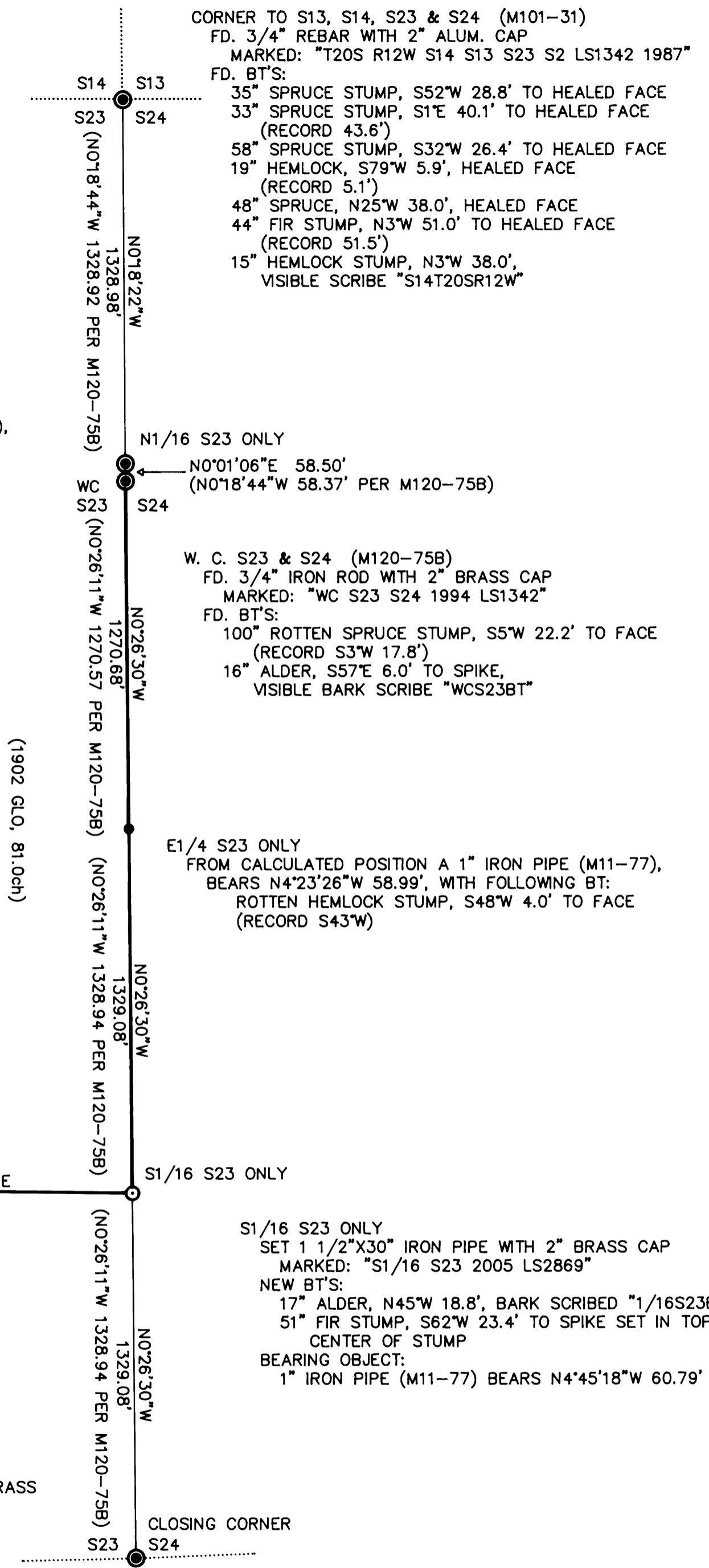
NARRATIVE

THE PURPOSE OF THIS SURVEY WAS TO ESTABLISH THE S1/16 ON THE EAST LINE OF SECTION 23, TOWNSHIP 20 SOUTH, RANGE 12 WEST, WILLAMETTE MERIDIAN, DOUGLAS COUNTY, OREGON, FOR MENASHA FOREST PRODUCTS CORPORATION AND D. R. JOHNSON LUMBER COMPANY. THE CONTROLLING SURVEYS WERE THE 1857 GLO SURVEY BY HARVEY GORDON, A 1902 GLO SURVEY BY WILLIAM BYARS, A 1943 SURVEY BY W. G. CORBITT (CS52/91), A 1960 AND 1963 SURVEYS BY WARREN HOOTMAN (M11-77 & M22-36), A 1987 SURVEY BY CLYDE MULKINS (M101-31), AND A 1994 SURVEY BY RONALD STUNTZNER (M120-75B). ACREAGE FOR PARTS OF SECTIONS 23 AND 24 WAS RETURNED BY THE 1857 GLO SURVEY. THE EAST LINE OF SECTION 23 WAS ENDED AT A WITNESS CORNER 21.50ch SOUTH OF THE NORTHEAST CORNER. THIS LINE WAS THEN COMPLETED BY THE 1902 GLO SURVEY AND RETURNED ACREAGES FOR THE REMAINDER OF SECTIONS 23 AND 24. THE 1902 PLAT SHOWS SECTION 23 AS ALIQUOT PARTS AND SECTION 24 WITH GOVERNMENT LOTS. TO PROTECT THESE PLAT ACREAGES THERE ARE DOUBLE CORNERS BETWEEN SECTIONS 23 AND 24. CORNERS ESTABLISHED ALONG THIS LINE ARE FOR SECTION 23 ONLY. THE 1973 BLM MANUAL OF SURVEYING INSTRUCTIONS WAS USED TREATING SECTION 23 AS AN ALIQUOT PART. THE E1/4 AND S1/16 OF SECTION 23 WAS CALCULATED AT MIDPOINT AND THEN MOVED WEST TO LINE BETWEEN THE WITNESS CORNER AND THE SOUTHEAST CLOSING CORNER. THIS ALSO AGREES WITH RONALD STUNTZNER'S SURVEY (M120-75B) SUBDIVIDING SECTION 23.

THE EQUIPMENT USED WAS TRIMBLE 4000 SERIES GPS RECEIVERS FOR TEMPORARY CONTROL AND A NIKON DTM530 TOTAL STATION WITH HP48GX DATA COLLECTOR. THE BASIS OF BEARING IS GEODETIC AS DETERMINED FROM THE GPS CONTROL SURVEY. DISTANCES MEASURED TO BEARING TREES ESTABLISHED IN THIS SURVEY ARE TO A SPIKE SET AT SIDE CENTER OF THE TREE. ALL OTHER DISTANCES ARE MEASURED TO SIDE CENTER UNLESS NOTED. BEARINGS WERE MEASURED TO THE CENTER OF THE TREE USING A HAND COMPASS. A TAG WAS ATTACHED TO THE TREE FACING THE CORNER WITH AN ORANGE BAND PAINTED AROUND THE TREE. LINE SHOWN AS MARKED ON THIS MAP WAS BLAZED AND PAINTED ORANGE. THE ASSISTING PERSONNEL WAS DOYCE ROSE.

LEGEND

PROJECTED LINES
 SURVEYED LINES ————
 PAINTED & BLAZED LINES ————
 FOUND CORNERS ●
 CORNERS SET ○
 CALCULATED CORNERS ●
 RECORD MEASUREMENTS (BEARING, DISTANCE)



N1/16 S23 ONLY (M120-75B)
 FD. 3/4" IRON ROD WITH 2" ALUM. CAP
 MARKED: "N1/16 S23 1994 LS1342"
 FD. BT'S:
 28" SPRUCE, N58°W 12.0', HEALED FACE
 26" SPRUCE, S9°W 15.1', HEALED FACE
 3/4" IRON ROD WITH 2" ALUM. CAP
 MARKED: "N1/16 S24 1994 LS1342" (M120-75B),
 SET INSIDE 1" IRON PIPE (M11-77),
 BEARS N2°06'W 5.02'

CORNER TO S13, S14, S23 & S24 (M101-31)
 FD. 3/4" REBAR WITH 2" ALUM. CAP
 MARKED: "T20S R12W S14 S13 S23 S2 LS1342 1987"
 FD. BT'S:
 35" SPRUCE STUMP, S52°W 28.8' TO HEALED FACE
 33" SPRUCE STUMP, S1°E 40.1' TO HEALED FACE
 (RECORD 43.6')
 58" SPRUCE STUMP, S32°W 26.4' TO HEALED FACE
 19" HEMLOCK, S79°W 5.9', HEALED FACE
 (RECORD 5.1')
 48" SPRUCE, N25°W 38.0', HEALED FACE
 44" FIR STUMP, N3°W 51.0' TO HEALED FACE
 (RECORD 51.5')
 15" HEMLOCK STUMP, N3°W 38.0',
 VISIBLE SCRIBE "S14T20SR12W"

N1/16 S23 ONLY
 NO°01'06"E 58.50'
 (NO°18'44"W 58.37' PER M120-75B)

W. C. S23 & S24 (M120-75B)
 FD. 3/4" IRON ROD WITH 2" BRASS CAP
 MARKED: "WC S23 S24 1994 LS1342"
 FD. BT'S:
 100" ROTTEN SPRUCE STUMP, S5°W 22.2' TO FACE
 (RECORD S3°W 17.8')
 16" ALDER, S57°E 6.0' TO SPIKE,
 VISIBLE BARK SCRIBE "WCS23BT"

E1/4 S23 ONLY
 FROM CALCULATED POSITION A 1" IRON PIPE (M11-77),
 BEARS N4°23'26"W 58.99', WITH FOLLOWING BT:
 ROTTEN HEMLOCK STUMP, S48°W 4.0' TO FACE
 (RECORD S43°W)

SE1/16 S23 (M120-75B)
 FD. 3/4" IRON ROD WITH 2" ALUM. CAP
 MARKED: "SE1/16 S23 1994 LS1342"
 FD. BT'S:
 20" FIR, N18°E 16.2' TO SPIKE, HEALED FACE
 14" FIR SNAG, S35°E 10.1' TO SPIKE,
 VISIBLE SCRIBE "16S23B"

S1/16 S23 ONLY
 SET 1 1/2"X30" IRON PIPE WITH 2" BRASS CAP
 MARKED: "S1/16 S23 2005 LS2869"
 NEW BT'S:
 17" ALDER, N45°W 18.8', BARK SCRIBED "1/16S23BT"
 51" FIR STUMP, S62°W 23.4' TO SPIKE SET IN TOP
 CENTER OF STUMP
 BEARING OBJECT:
 1" IRON PIPE (M11-77) BEARS N4°45'18"W 60.79'

CC S23 & S24 (M120-75B)
 FD. 1" IRON PIPE AND 3/4" IRON ROD WITH 2" BRASS
 CAP MARKED: "S23 S24 CC 1994 LS1342"
 FD. BT'S:
 26" FIR, N42°E 22.2' TO SPIKE, HEALED FACE
 (RECORD N39°E)
 43" ROTTEN FIR SNAG, N83°E 17.9',
 VISIBLE SCRIBE "T20SR12" (RECORD N79°E)
 14" SPRUCE, N70°W 13.0' TO SPIKE, OPEN FACE
 (RECORD N74°W)
 ROTTEN HEMLOCK REMAINS, N21°W 19.8' TO FACE
 (RECORD N23 1/2°W)

REGISTERED
 PROFESSIONAL
 LAND SURVEYOR

Brent W. Bacon
 OREGON
 JULY 14, 1998
BRENT W. BACON
 2869

SURVEYED BY: BRENT W. BACON
 MENASHA FOREST PRODUCTS
 P.O. BOX 588
 NORTH BEND, OR. 97459
 LICENSE RENEWAL: 12-31-2005

**MENASHA FOREST PRODUCTS
 PROPERTY SURVEY**
 T20S R12W S23

PROJECT NO:	SCALE: 1" = 400'	DATE: 9/14/05
DRAWN BY: B. BACON		SHT: OF: 1 1
CHECKED BY: J. MINOR		
APPROVED BY:		