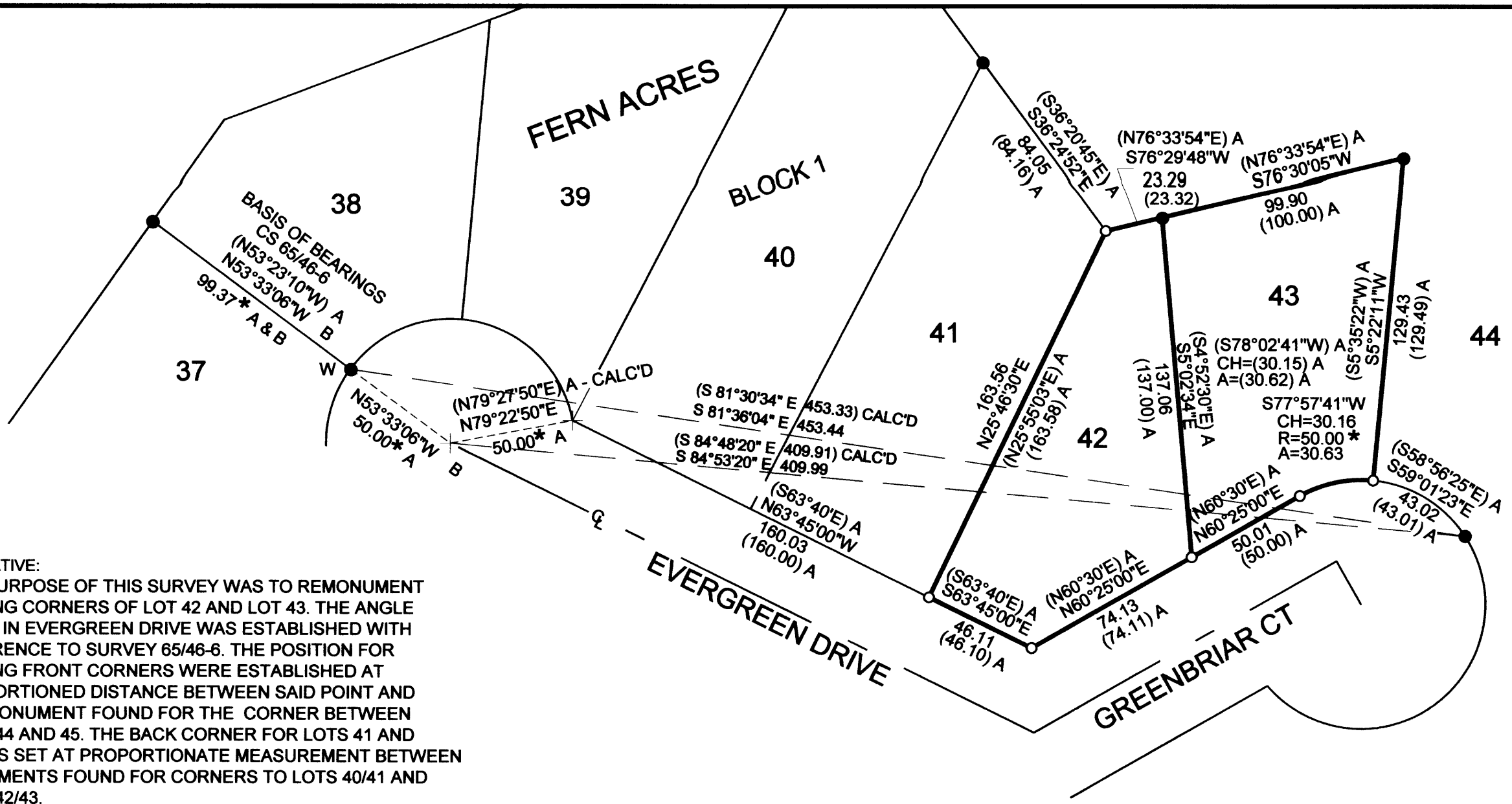


FILED
 Date: 9-15-2005 By: JC
 This survey consists of:
 Map: M148-41
 Narrative:
 Corner Rpt:
 DOUGLAS COUNTY
 SURVEYOR



NARRATIVE:
 THE PURPOSE OF THIS SURVEY WAS TO REMONUMENT MISSING CORNERS OF LOT 42 AND LOT 43. THE ANGLE POINT IN EVERGREEN DRIVE WAS ESTABLISHED WITH REFERENCE TO SURVEY 65/46-6. THE POSITION FOR MISSING FRONT CORNERS WERE ESTABLISHED AT PROPORTIONED DISTANCE BETWEEN SAID POINT AND THE MONUMENT FOUND FOR THE CORNER BETWEEN LOTS 44 AND 45. THE BACK CORNER FOR LOTS 41 AND 42 WAS SET AT PROPORTIONATE MEASUREMENT BETWEEN MONUMENTS FOUND FOR CORNERS TO LOTS 40/41 AND LOTS 42/43.

- INDICATES 5/8" X 30" IRON ROD SET WITH YELLOW PLASTIC CAP MARKED "WOBBE - PLS 1093".
 - INDICATES 5/8" IRON ROD FOUND WITH YELLOW PLASTIC CAP MARKED "WOBBE-PLS 1093"
 - INDICATES 5/8" IRON ROD FOUND (ASSUMED FROM FERN ACRES PLAT)
 - () INDICATES RECORD DATA.
 - * INDICATES MEASURED DATA SAME AS RECORD.
 - INDICATES THAT THE LINE IS NOT TO SCALE.
- EQUIPMENT USED: NIKON DTM - 521

SURVEY REFERENCES
 A - FERN ACRES, VOLUME 15, PAGE 34A
 B - CSF 65/46-6
 C - CSF 58/234-6

G:\DCID\2005\0502ROS.DWG
 REGISTERED PROFESSIONAL LAND SURVEYOR
Eugene M. Wobbe
 OREGON
 JULY 30, 1976
 EUGENE M. WOBBE
 1093
 P.L.S. EXPIRATION DATE: 6-30-2006

WOBBE & ASSOCIATES, INC.
 510 KINGWOOD ST./ P.O. BOX 3093
 FLORENCE, OR 97439

SURVEY FOR:
 MIKE KAUFMANN
 NE 1/4, SEC. 33, T21S, R12W, W.M.
 DOUGLAS COUNTY, OREGON

AUGUST 11, 2005 DRAWN: LM

JOB F05-02

M148-41