

A SURVEY FOR ROSEBURG RESOURCES

LOCATED IN SECTION 31, T28S, R5W, W.M.,
DOUGLAS COUNTY, OREGON

FILED
Date: 7-1-2005 By: JC
This survey consists of:
Map: M148-4
Name: _____
Corner kpt: 405/54-25
DOUGLAS COUNTY A-G
SURVEYOR

C.B. File No 405/54-25 A-4
MAP FILE M148-4

NARRATIVE:

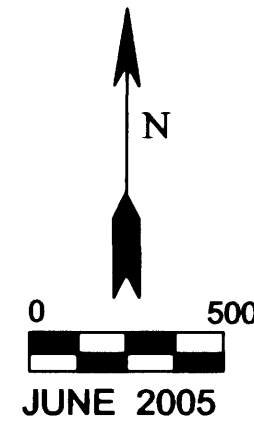
THE PURPOSE OF THIS SURVEY IS TO MONUMENT THE CORNERS AND MARK THE BOUNDARY LINES OF A SPECIFIED PORTION OF THE ROSEBURG RESOURCES CO. PROPERTY DESCRIBED IN INSTRUMENT #93-19228, DEED RECORDS, DOUGLAS COUNTY, OREGON.

THE FOLLOWING CORNERS OF SECTION 31 WERE FIELD LOCATED USING CLOSED TRAVERSE LOOPS: THE NE & SE SECTION CORNERS, ALL FOUR ONE- QUARTER SECTION CORNERS, AND THE EAST ONE- SIXTEENTH CORNER ON THE SOUTH LINE. THESE CONTROLLING CORNERS WERE USED FOR STANDARD BREAKDOWN OF THE SOUTHEAST ONE- QUARTER OF THE SECTION AND THE FOLLOWING CORNERS WERE MONUMENTED: THE CENTER EAST ONE- SIXTEENTH CORNER, THE SE ONE- SIXTEENTH CORNER, AND THE SOUTH ONE- SIXTEENTH CORNER COMMON TO SECTIONS 31 AND 32. IT SHOULD BE NOTED THAT THE ORIGINAL NORTH ONE- QUARTER CORNER OF SECTION 31 WAS FOUND. THIS CHANGED THE BREAKDOWN OF THE SECTION FROM THAT WHICH WAS DONE BY SURVEY M56-41. ALSO ADDING TO THIS CHANGE, THE WEST ONE- QUARTER CORNER POSITION AS FIELD LOCATED DID NOT MATCH THE POSITION CALCULATED PER THE SAME SURVEY. "CORNER E" WAS CALLED BY INSTR.# 93-19288 TO BE THE SOUTHEAST CORNER OF INSTR.#87-17724. IT WAS THEREFORE SET AS DESCRIBED BY INSTR.#87-17724 ON THE EAST- WEST CENTERLINE OF THE SOUTHEAST ONE- QUARTER OF SECTION 31 AT A POINT 270.00' EASTERLY OF THE CALCULATED CENTER SOUTH ONE- SIXTEENTH CORNER POSITION. CORNER F WAS PLACED ON THE SAME SIXTEENTH LINE 300' EASTERLY OF "CORNER E". VARIOUS OPTIONS EXISTED FOR THE PLACEMENT OF "CORNER F". AGAIN THIS WAS DUE TO LINE CHANGES RESULTING FROM DIFFERENCES WITH SURVEY M56-41. THE OPTION OF HOLDING THE DEED DISTANCE OF 300' FROM "CORNER E" AS CALLED BY INSTRUMENT #93-19228 WAS A REASONABLE CHOICE AND THE MONUMENT WAS SET ON THE TRUE ONE-SIXTEENTH LINE.

COUNTY RD.#105 WAS NOT SURVEYED.

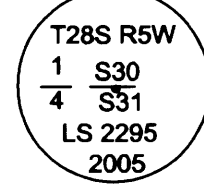
FIELD CREW: G.LANG, T.LANG, J.HERZBERG, G.LANG
COMPS: G.LANG
EQUIPMENT: NIKON DTM 420

NOTE: SEE CORNER REPORTS REFERENCED HEREON FOR ADDITIONAL BT INFORMATION



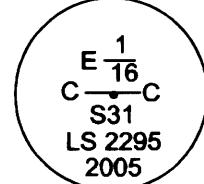
NORTH 1/4 CORNER SECTION 31
FOUND ORIGINAL WHITE OAK BEARING TREE. THE CORNER POSITION WAS RESET AT RECORD BEARING AND DISTANCE FROM THE TREE.
A 3/4" IRON PIPE PER M56-41 BEARS N32°22'E 10.68'

CORNER A



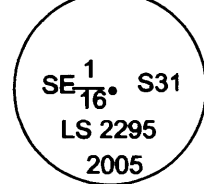
ORIGINAL BEARING TREE
ORIGINAL 24 1/2" W.OAK BEARS N77°59'43"E 73.92'
NOTE: WE FIND SCRIBING "BT" AT THE PROPER TREE SIZE/RING COUNT
NEW BEARING TREES
14" MADRONE BEARS S73°E 74.00' SCRIBED "1/4 S31 BT"
9 1/2" MADRONE BEARS S2°E 13.50' SCRIBED "1/4 S31 BT"
6" D.FIR BEARS N18 1/2"W 25.10' SCRIBED "1/4 S30 BT"
FD 3/4" IP PER M56-41 BEARS N32°22'00"E 10.68'
(OAK BT PER M56-41 BEARS S23°E 74.0' FROM THE IP)

CORNER B



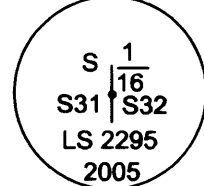
BEARING TREES
19 1/2" ALDER BEARS N54 1/2°E 28.90' SCRIBED PER M56-41
19 1/2" D.FIR BEARS S34°E 83.90' SCRIBED "CE 1/16 S31 BT"

CORNER C



BEARING TREES
23" PINE BEARS N44 1/2°W 36.10' SCRIBED PER M56-41
22 1/2" OAK BEARS N88°E 56.40' SCRIBED PER M56-41

CORNER D



BEARING TREES
15" W.OAK BEARS S9 1/2°E 43.70' SCRIBED "S 1/16 S32 BT"
15 1/2" W.OAK BEARS S54°W 101.30' SCRIBED "S 1/16 S31 BT"

CORNERS E & F

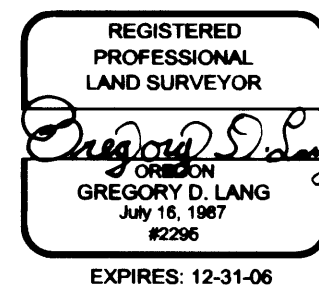


NO BEARING TREES

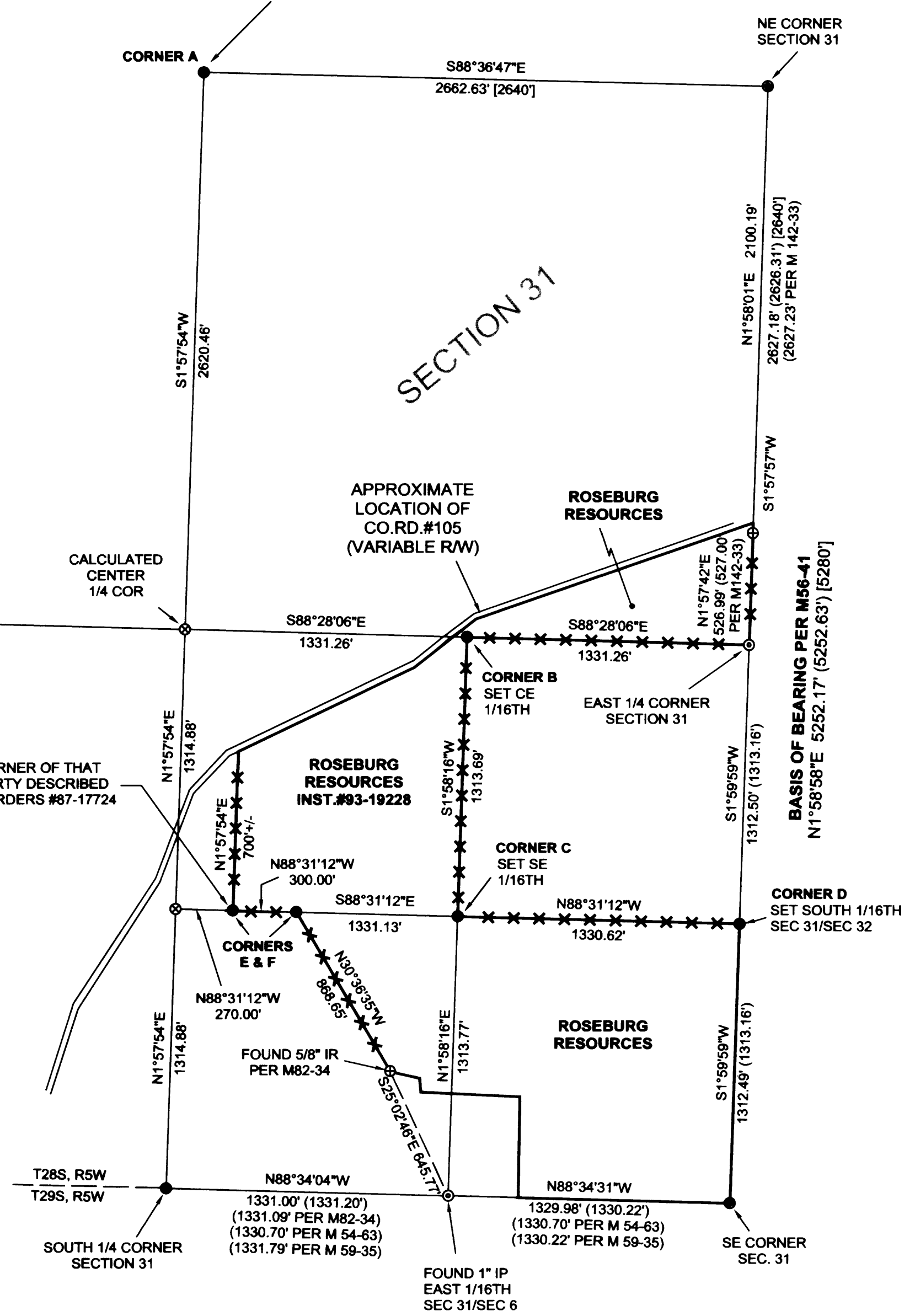
W 1/4 COR SEC. 31
(NOTE: THIS POSITION DOES NOT MATCH CALCULATED POSITION PER M56-41)

LEGEND:

- ⊙ FOUND 3/4" IRON PIPE UNLESS OTHERWISE NOTED
- ⊕ FOUND 5/8" IRON ROD
- SET 5/8" X 36" IRON ROD WITH ALUMINUM CAP
- FOUND BRASS CAP
- ⊙ CALCULATED POINT - NOT MONUMENTED
- LINES WHICH WERE POSTED WITH STEEL POSTS AND MARKED WITH FLAGGING, TREE BLAZES, AND PAINT
- () RECORD PER M56-41
- [] RECORD PER ORIGINAL GOVERNMENT SURVEY



SURVEYED BY:
GREGORY D. LANG
7550 WILLIS CR RD
WINSTON, OR 97496



C.B. File No 405/54-25 A-4
MAP FILE M148-4