

MAP OF SURVEY

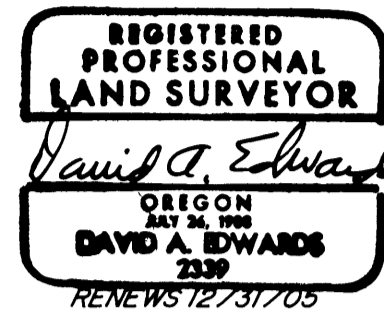
LOCATED in Section 10, T. 32 S., R. 8 W., W.M. in
Douglas County, Oregon.

August 24, 2005

FILED
Date: 8-29-2005 By: JC
This survey consists of:
Map: M148-31
Name:
Corner Rpt:
DOUGLAS COUNTY
SURVEYOR

SURVEYED FOR: ROSEBURG RESOURCES CO.
P.O. BOX 1088
ROSEBURG, OREGON 97470

SURVEYED BY: DAVID EDWARDS LAND SURVEYING
P.O. BOX 361
OAKLAND, OREGON 97462
PHONE: (541) 459-0512



LEGEND

- INDICATES B.L.M. OR COUNTY SURVEYOR BRASS CAP FOUND.
- INDICATES 5/8" X 30" STEEL REBAR WITH 2 1/2" ALUM. CAP MKD. "ROSEBURG RESOURCES-LS 2339-2005 SET.
- () DENOTES B.L.M. RESURVEY DATA UNLESS OTHERWISE NOTED.
- INDICATES LINE POSTED, BLAZED AND FLAGGED THIS SURVEY.

SCALE: 1" = 600'

BASIS OF BEARINGS: B.L.M. RESURVEY AS SHOWN.

NARRATIVE

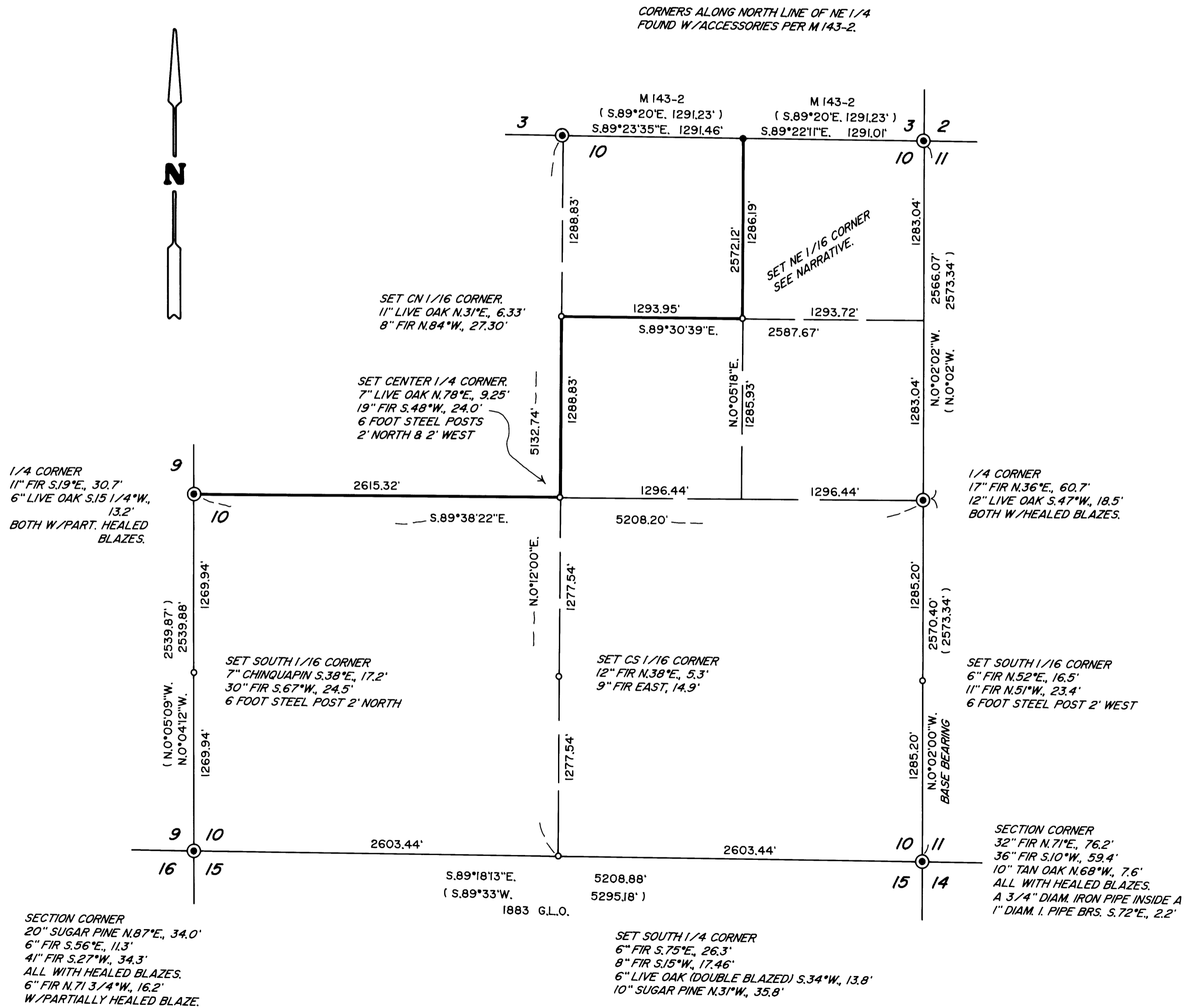
THE PURPOSE OF THIS SURVEY IS TO MARK THE BOUNDARIES SHOWN HEREON AND TO SET ADDITIONAL 1/16 CORNERS AS NOTED. CONTROLLING MONUMENTS WERE TIED IN AND THE SUBDIVISION OF THE SECTION COMPUTED. RANDOM TRAVERSES WERE MADE NEAR THE LINES TO BE POSTED AND OFFSETS MADE TO TRUE LINE. THE LINES IN BOLD WERE MARKED BY BLAZING TREES ON EACH SIDE OF LINE, BY SETTING 6 FOOT STEEL POSTS ALONG TRUE LINE AT INTERVALS OF 200 FEET OR LESS AND BY HANGING LIBERAL AMOUNTS OF RED FLAGGING ALONG THE TRUE LINE. BEARING TREES NOTED AT SET CORNERS WERE SCRIBED ACCORDING TO THE 1973 B.L.M. MANUAL AND MEASURED TO CENTER OF TREE AT ROOT CROWN.

AT THE NE 1/16 CORNER: VERY BRUSHY AREA. NO TREES AVAILABLE. SET 6" STEEL POSTS S.44°32'49"E., 1.79' AND EAST 2.0'

FIELD CREW: BRANT MILLER AND ERIC SPRINKLE.

EQUIPMENT: NIKON TOTAL STATION.

COMPS. AND DRAFTING: DAVID EDWARDS.



MAP FILE M148-31

MAP FILE M148-31