

LONE ROCK TIMBER MANAGEMENT COMPANY

TOWNSHIP 29 SOUTH, RANGE 4 WEST, W.M. SECTIONS 33 MANAGED BY LONE ROCK TIMBERLAND CO.

PO BOX 1127 ROSEBURG, OREGON 97470

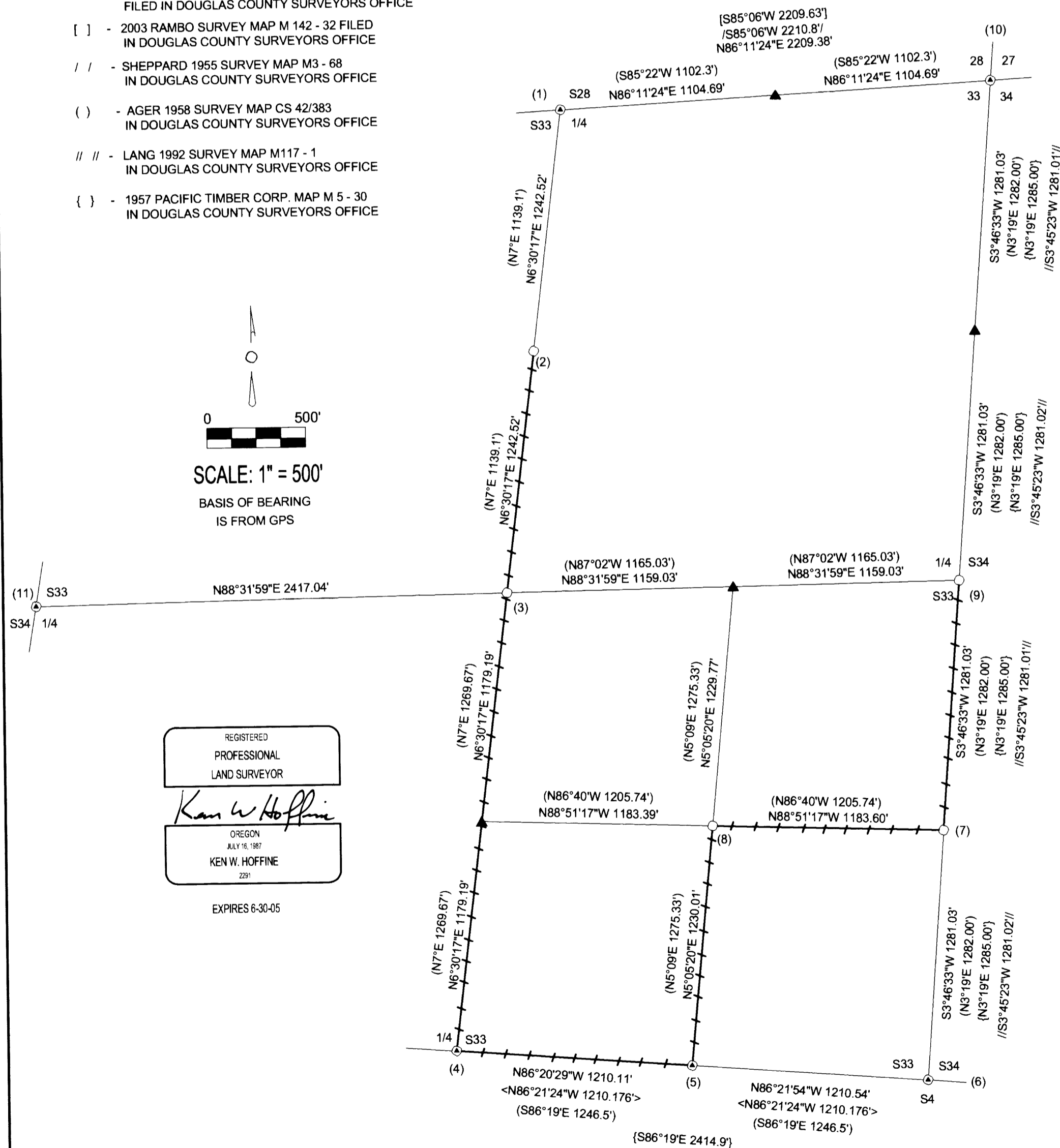
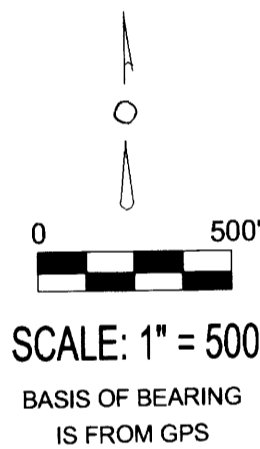
DOUGLAS COUNTY, OREGON

SURVEY: BMH 7221 TRACT

DATE: JULY 2005

LEGEND:

- ⊙ - FOUND MONUMENTS
- - SET 5/8" BY 40" IRON ROD WITH ALUMINUM CAP
- ▲ - COMPUTED POINTS
- - PROJECTED LINES
- +— - LINES FLAGGED, BLAZED & TAGGED
- < > - 1994 BLM FIELD NOTES PAGES 20092 - 20095 FILED IN DOUGLAS COUNTY SURVEYORS OFFICE
- [] - 2003 RAMBO SURVEY MAP M 142 - 32 FILED IN DOUGLAS COUNTY SURVEYORS OFFICE
- // - SHEPPARD 1955 SURVEY MAP M3 - 68 IN DOUGLAS COUNTY SURVEYORS OFFICE
- () - AGER 1958 SURVEY MAP CS 42/383 IN DOUGLAS COUNTY SURVEYORS OFFICE
- // // - LANG 1992 SURVEY MAP M117 - 1 IN DOUGLAS COUNTY SURVEYORS OFFICE
- { } - 1957 PACIFIC TIMBER CORP. MAP M 5 - 30 IN DOUGLAS COUNTY SURVEYORS OFFICE



REGISTERED
PROFESSIONAL
LAND SURVEYOR
Ken W. Hoffine
OREGON
JULY 16, 1987
KEN W. HOFFINE
2291
EXPIRES 6-30-05

NARRATIVE:

THIS SURVEY WAS CONDUCTED TO ESTABLISH PROPERTY LINES AND PROPERTY CORNERS FOR TIMBER MANAGEMENT PURPOSES. WE INITIATED THIS SURVEY AT THE NORTH QUARTER OF SECTION 33 AND RAN A RANDOM TRAVERSE SOUTHERLY TO THE SOUTH QUARTER OF SECTION 33, THENCE NORTHEASTERLY ALONG THE PROPERTY LINES SHOWN TO THE SOUTH 1/16 BETWEEN SECTIONS 33 AND 34, THENCE WE WERE ABLE TO SIGHT ACROSS SECTION 33 TO CLOSE OUR TRAVERSE BACK AT THE NORTH QUARTER OF SECTION 33. WE THEN RAN SEPARATE CLOSED TRAVERSES FROM VARIOUS POINTS ALONG OUR MAIN TRAVERSE TO TIE IN THE WEST QUARTER, EAST QUARTER, NORTHEAST SECTION, AND SOUTHEAST CORNERS. WE THEN RAN A GPS NETWORK TO TRAVERSE POINTS NEAR EACH CORNER TO CHECK OUR CONVENTIONAL TRAVERSE CONTROL. WE COMPUTED THE SUBDIVISION BREAKDOWN OF SECTION 33 AND WE FIND L.E. AGERS 1958 SURVEY OF SECTION 33 TOO FAR OUT OF ACCEPTABLE TOLERANCE. WE SET THE QUARTER CORNER AND SOUTH ONE-SIXTEENTH ON THE EAST LINE OF SECTION 33 AS PER OUR SURVEY, WHICH MATCHED LANG'S 1992 PROPORTION OF THIS LINE. WE ALSO SET THE INTERIOR CORNERS OF SECTION 33 AS SHOWN ON THIS MAP FROM OUR COMPUTED SUBDIVISION OF SECTION 33. WE BLAZED, PAINTED, TAGGED AND RIBBONED THE PROPERTY LINES AS SHOWN ON THIS MAP. THIS SURVEY WAS DONE WITH A NIKON DTM 450, TRIMBLE 4400 AND 4000 GPS INSTRUMENTS WITH GARY ANGIOLET, MARK DVORSCAK, PAT CATER AND IGNACIO ROMAN ASSISTING ME.

CORNER INFORMATION:

- 1) THE QUARTER CORNER BETWEEN SECTIONS 28 AND 33
FOUND 1" IRON PIPE.
-- 22" DOUGLAS FIR BEARS N22°E, 49.1 FEET (RECORD N22 1/2"E, 48.9 FEET) HEALED FACE AND TAG
-- 10" DOUGLAS FIR BEARS S84 1/4"E, 36.0 FEET (RECORD N88°E, 16.4 FEET TAG DIST. 36.0 FEET) VISIBLE SCRIBING AND TAG.
-- 20" ROTTEN CEDAR STUMP BEARS S52 1/2"E, 23.5 FEET (RECORD S53°E, 22.5 FEET) VISIBLE SCRIBING
-- 15" DOUGLAS FIR BEARS S29 3/4"E, 16.0 FEET (RECORD S38°E, 16.4 FEET) VISIBLE SCRIBING AND TAG
-- 8" DOUGLAS FIR BEARS S52 3/4"W, 27.9 FEET (RECORD S55°W, 27.9 FEET) VISIBLE SCRIBING AND TAG
-- 13" GRAND FIR BEARS N59 1/2"W, 5.1 FEET (RECORD N62°W, 5.1 FEET) VISIBLE SCRIBING AND TAG
CORNER LIES ON NORTHWEST FACING SLOPE APPROXIMATELY 75 FEET NORTH OF MAIN RIDGETOP AND APPROXIMATELY 150 FEET SOUTH OF NEW DIRT ROAD.
- 2) THE CENTER NORTH 1/16 CORNER FOR SECTION 33
SET 5/8" X 40" IRON ROD WITH 2 1/2" ALUMINUM CAP MARKED LONE ROCK TIMBER CN 1/16 S33 2005 PLS 2291.
-- 7" DOUGLAS FIR BEARS S70 3/4"E, 20.2 FEET, WE SCRIBE CN 1/16 S33 B.T. AND TAG
-- 11" DOUGLAS FIR BEARS N13 3/4"W, 25.4 FEET, WE SCRIBE CN 1/16 S33 B.T. AND TAG
-- 5/8" X 40" IRON ROD WITH YELLOW PLASTIC CAP MARKED LONE ROCK TIMBER PLS2291 BEARS S6 1/2°W, 39.8 FEET
-- 5/8" X 40" IRON ROD WITH YELLOW PLASTIC CAP MARKED LONE ROCK TIMBER PLS2291 BEARS N88 1/2°E, 40.51 FEET.
CORNER LIES ON EAST SIDE OF RIDGETOP.
- 3) THE CENTER 1/4 OF SECTION 33
SET 5/8" X 40" IRON ROD WITH 2 1/2" ALUMINUM CAP MARKED LONE ROCK TIMBER T29S, R4W C1/4 S33 2005 PLS2291.
-- 11" DOUGLAS FIR BEARS N49 1/4"E, 27.5 FEET, WE SCRIBE C 1/4 S33 B.T. AND TAG TREE
-- 11" DOUGLAS FIR BEARS N56 1/4"W, 24.1 FEET, WE SCRIBE C 1/4 S33 B.T. AND TAG TREE
-- 10" DOUGLAS FIR BEARS S30°W, 33.9 FEET, WE SCRIBE C 1/4 S33 B.T. AND TAG TREE
-- 11" DOUGLAS FIR BEARS S16 1/4"E, 19.1 FEET, WE SCRIBE C 1/4 S33 B.T. AND TAG TREE
CORNER LIES ON SOUTH SLOPE APPROXIMATELY 100 FEET SOUTH OF BLM ROAD 30-4-3.1.
- 4) THE SOUTH 1/4 CORNER OF SECTION 33 ONLY
FOUND 1994 BLM BRASS CAP.
-- 11" CEDAR BEARS N64°E, 29.9 FEET (RECORD N64°E, 29.7 FEET) HEALED FACE AND BLM TAG
-- 35" DOUGLAS FIR BEARS N22°W, 15.0 FEET (RECORD N22 1/4"W, 14.85 FEET) HEALED FACE AND BLM TAG
CORNER SITS ON SOUTH FACING SLOPE APPROXIMATELY 100 FEET SOUTH AND 100 FEET EAST OF RIDGETOP.
- 5) THE EAST 1/16 CORNER FOR SECTION 33 ONLY
FOUND 1994 BLM BRASS CAP.
-- 8" CEDAR BEARS N76 1/4"E, 50.8 FEET (RECORD N76 3/4"E, 50.16 FEET) HEALED FACE AND BLM TAG
-- 21" DOUGLAS FIR BEARS N50 1/2°W, 1.65 FEET (RECORD N62°W, 1.65 FEET) HEALED FACED AND BLM TAG
CORNER LIES ON SOUTHWEST SLOPE
- 6) THE CORNER FOR SECTIONS 33 AND 34 ONLY
FOUND 1994 BLM BRASS CAP.
-- 30" DOUGLAS FIR BEARS N60 1/4°W, 7.0 FEET (RECORD N63 1/2°W, 7.26 FEET) HEALED FACE AND BLM TAG
-- 42" FIR STUMP BEARS N32°E, 24.8 FEET (RECORD N30 1/2"E, 24.42 FEET)
CORNER IS ON WEST FACING SLOPE APPROXIMATELY 100 FEET WEST OF JUNCTION OF BLM ROADS 30-4-3.1 AND 29-4-34.0.
- 7) THE SOUTH 1/16 CORNER BETWEEN SECTIONS 33 AND 34
SET 5/8" X 40" IRON ROD WITH 2 1/2" ALUMINUM CAP MARKED LONE ROCK TIMBER S 1/16 S33 S34 2005 PLS2291.
-- 12" DOUGLAS FIR BEARS S68 3/4°W, 10.3 FEET, WE SCRIBE S 1/16 S33 B.T. AND TAG TREE
-- 13" DOUGLAS FIR BEARS S81 1/2"E, 8.8 FEET, WE SCRIBE S 1/16 S34 B.T. AND TAG TREE
-- 1" IRON PIPE SET BY PACIFIC TBR CORP. IN 1957 BEARS N89°W, 18.03 FEET
CORNER LIES ON WEST FACING SLOPE APPROXIMATELY 120 FEET WEST OF DIRT SKID ROAD.
- 8) THE SOUTHEAST 1/16 CORNER OF SECTION 33
SET 5/8" X 40" IRON ROD WITH 2 1/2" ALUMINUM CAP MARKED LONE ROCK TIMBER SE 1/16 S33 2005 PLS2291.
-- 9" DOUGLAS FIR BEARS S1°E, 10.7 FEET, WE SCRIBE SE 1/16 S33 B.T. AND TAG TREE
-- 10" DOUGLAS FIR BEARS N15 3/4°E, 11.2 FEET, WE SCRIBE SE 1/16 S33 B.T. AND TAG TREE
CORNER SITS ON SOUTHEAST SLOPE APPROXIMATELY 70 FEET WEST OF OLD ROAD GRADE.
- 9) THE 1/4 CORNER BETWEEN SECTIONS 33 AND 34
SET 5/8" X 40" IRON ROD WITH 2 1/2" ALUMINUM CAP MARKED LONE ROCK TIMBER T29S R4W S33 S34 2005 PLS2291.
-- 12" DOUGLAS FIR BEARS S18 3/4°E, 49.7 FEET, WE SCRIBE 1/4 S34 B.T. AND TAG TREE
-- 10" DOUGLAS FIR BEARS S16 1/4°W, 19.5 FEET, WE SCRIBE 1/4 S33 B.T. AND TAG TREE
-- 28" EXISTING DOUGLAS FIR BEARING TREE BEARS N71°W, 18.2 FEET, HEALED FACE WE TAG
-- 10" DOUGLAS FIR BEARS N82 3/4"E, 57.8 FEET, WE SCRIBE 1/4 S34 B.T. AND TAG TREE
-- 1" IRON PIPE SET BY PACIFIC TBR CORP. IN 1957 BEARS N71 3/4°W, 7.98 FEET
-- SET 5/8" X 40" IRON ROD WITH YELLOW PLASTIC CAP MARKED LONE ROCK TIMBER PLS2291 BEARS S3 3/4°W, 58.62 FEET
-- SET 5/8" X 40" IRON ROD WITH YELLOW PLASTIC CAP MARKED LONE ROCK TIMBER PLS2291 BEARS S88 1/2°W, 69.93 FEET
CORNER SETS ON WEST FACING SLOPE APPROXIMATELY 175 FEET WEST OF BLM ROAD 30-4-3.1 ROAD.
- 10) THE NORTHEAST SECTION CORNER FOR SECTION 33
FOUND 1" IRON PIPE SET BY SHEPPARD IN 1955.
-- 10" CEDAR BEARS S83°E, 12.5 FEET (RECORD S85°E, 12.6 FEET) VISIBLE SCRIBING AND TAG
-- 43" DOUGLAS FIR BEARS N62 3/4"E, 59.9 FEET (RECORD N60°E, 59.4 FEET) HEALED FACE AND BLM TAG
-- 14" DOUGLAS FIR BEARS N48 3/4°E, 26.6 FEET (RECORD N44°E, 26.5 FEET) VISIBLE SCRIBING AND TAG
-- 29" FIR SNAG BEARS N17 1/4°W, 27.2 FEET (RECORD N16°W, 27.2 FEET) HEALED FACE AND BLM TAG
-- 51" CEDAR BEARS S47 3/4°W, 17.8 FEET (RECORD S47°W, 17.8 FEET) HEALED FACE AND TAG
CORNER LIES APPROXIMATELY 75 FEET EAST AND 75 FEET SOUTH OF NEW DIRT ROAD.
- 11) THE WEST 1/4 CORNER OF SECTION 33
FOUND BADLY BENT 2" IRON PIPE SET BY SHEPPARD IN 1955.
-- 33" METAL CAPPED FIR STUMP BEARS N17 1/2°E, 9.7 FEET (RECORD N19°E, 9.4 FEET) AXE WORK AND BLM TAG
-- 27" CEDAR BEARS N69°W, 41.4 FEET (RECORD N70°W, 41.5 FEET) DOUBLE HEALED FACES
CORNER SITS ON NORTH FACING SLOPE.

FILED

Date: 8-15-2005 By: JC
Title: Surveyor
Map: M 148-23
Name:
Corner:

DOUGLAS COUNTY
SURVEYOR

MAP FILE M 148-23

MAP FILE M 148-23