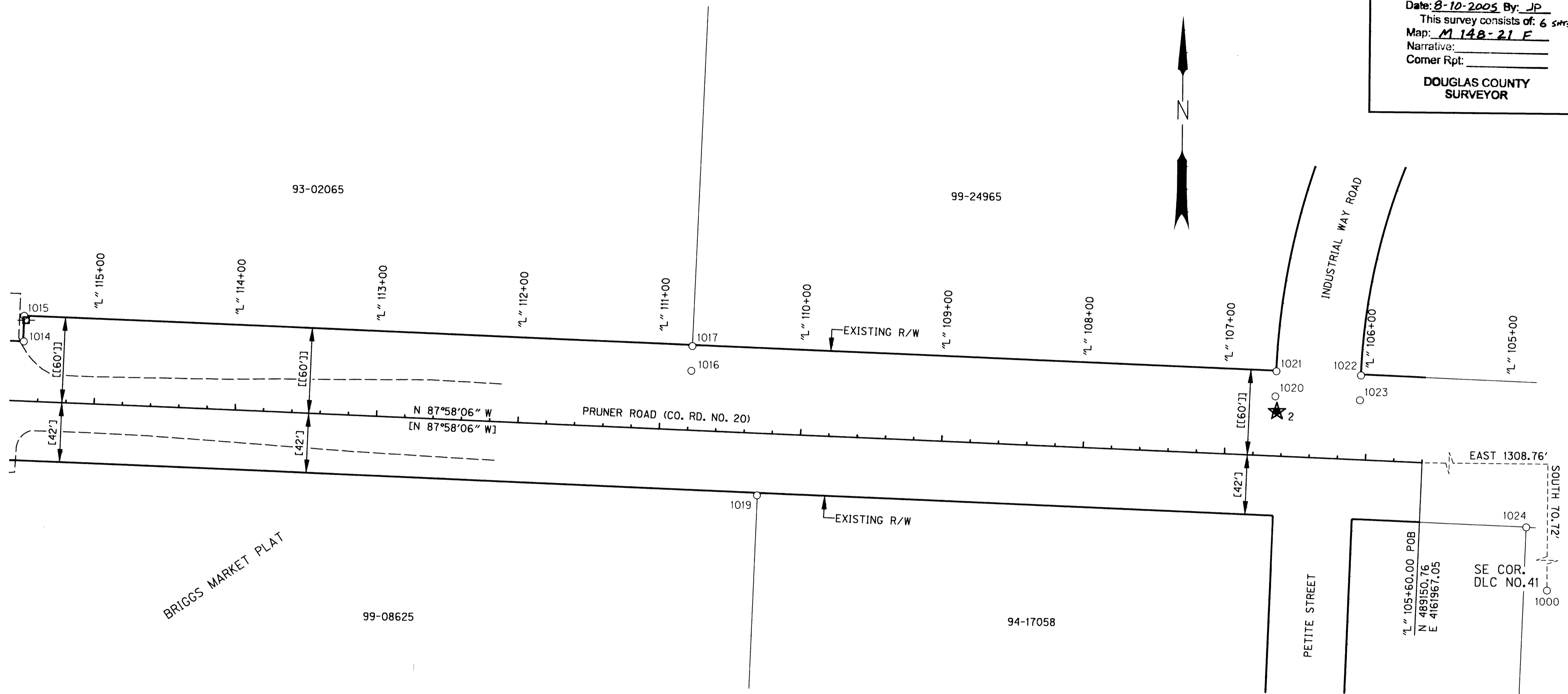
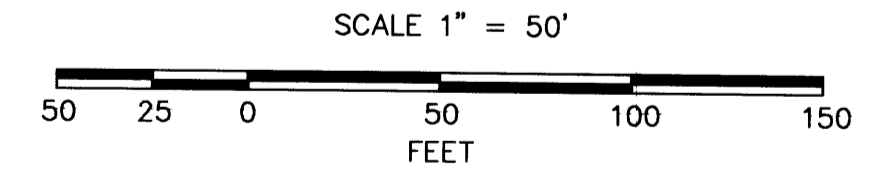


S.W. 1/4 SEC. 7, T.30 S., R.5 W., W.M.

FILED
 Date: 8-10-2005 By: JP
 This survey consists of: 6 shrs.
 Map: M 148-21 F
 Narrative:
 Corner Rpt:
 DOUGLAS COUNTY
 SURVEYOR

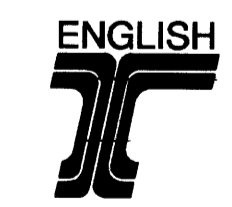


LEGEND	
() RECORD PER COUNTY ROAD 20 SURVEY NO. 0082 0082	■ POWER POLE
[] PER BOOK 1461, PAGE 607	— RIGHT-OF-WAY
[[]] PER PARTITION NO. 2004-0067	— PROPERTY LINE
○ FOUND MONUMENT	--- EDGE PAVEMENT
★ SET GPS POINT	—X— FENCE
▲ SET NETWORK POINT	



RECOVERED MONUMENT LIST
 CS = COUNTY SURVEY
 YPC = YELLOW PLASTIC CAP

PT. ID.	LDP NORTHING	LDP EASTING	STATION	OFFSET	DATE	DESCRIPTION & REFERENCE DOCUMENTS
1000	489080.04	4163275.81	N/A	N/A	10-27-2004	FND 1" BOAT SPIKE "DCSO" SE 41", FLUSH - DOUGLAS CO. CORNER NO. 041020
1002	491434.97	4163366.76	N/A	N/A	10-27-2004	FND 1 1/4" STEEL AXLE WITH 3 1/2" GEARED END - PER REF - CS M132-7
1016	489211.15	4161449.78	"L" 110+79.09	42.01' RT	11-01-2004	FND 5/8" REBAR W/ YPC "LANDMARK PLS 2287", UP 2"- CS M132-7
1017	489228.58	4161450.40	"L" 110+79.09	59.45' RT	11-01-2004	FND 5/8" REBAR W/ YPC "LANDMARK PLS 2287", DN 1"-PARTITION PLAT NO. 2004-0067
1019	489123.78	4161496.89	"L" 110+28.91	43.63' LT	11-01-2004	FND 5/8" REBAR W/ YPC "LANDMARK PLS 2287", DN 5"- CS M132-7
1020	489196.66	4161862.90	"L" 106+65.71	42.18' RT	11-01-2004	FND 5/8" REBAR W/ YPC "DW BAKER PLS 1978", DN 13"- BRIGGS MARKET PLAT
1021	489214.28	4161863.54	"L" 106+65.70	59.81' RT	11-01-2004	FND 5/8" REBAR W/ YPC "LANDMARK PLS 2287", DN 10"- CS M132-7
1022	489211.88	4161923.45	"L" 106+05.74	59.53' RT	11-01-2004	FND 5/8" REBAR W/ YPC "LANDMARK PLS 2287", UP 1"- CS M132-7
1023	489194.48	4161922.83	"L" 106+05.74	42.12' RT	11-01-2004	FND 5/8" REBAR W/ YPC "LANDMARK PLS 2287", FLUSH- CS M132-7
1024	489106.12	4162041.24	"L" 104+84.28	41.98' LT	11-01-2004	FND 5/8" REBAR W/ YPC (UNREADABLE), FLUSH-BRIGGS MARKET PLAT



REGISTERED
 PROFESSIONAL
 LAND SURVEYOR

Andrew D. Ausland

OREGON
 JULY 15, 2003
 ANDREW D. AUSLAND
 56136

RENEWAL DATE: DEC. 31, 2005
 SIGNED: 7-22-05

RANDY FITCH
 APPROVED BY: GROUP MANAGER TITLE

OBEC CONSULTING ENGINEERS
 1335 POPLAR DRIVE
 MEDFORD, OREGON 97504
 TEL. (541) 774-5590 FAX. (541) 774-5591

HORIZONTAL CONTROL, RECOVERY
 AND RETRACEMENT MAP
 S. UMPQUA RIVER (PRUNER RD.) BRIDGE
 FOR DOUGLAS COUNTY, OREGON

ODOT KEY NO. 12550
 MAY 2005

DESIGNED: A. AUSLAND
 PROJ. NO. 019-76.5
 SHT. 6 OF 6

DRAWN: R. ODEAR
 CHK'D: RANDY FITCH
 FILE NO. 148295

Co.Rd. #20 M.P. 0.53 - 0.71

MAP FILE M148-21 F

140030071