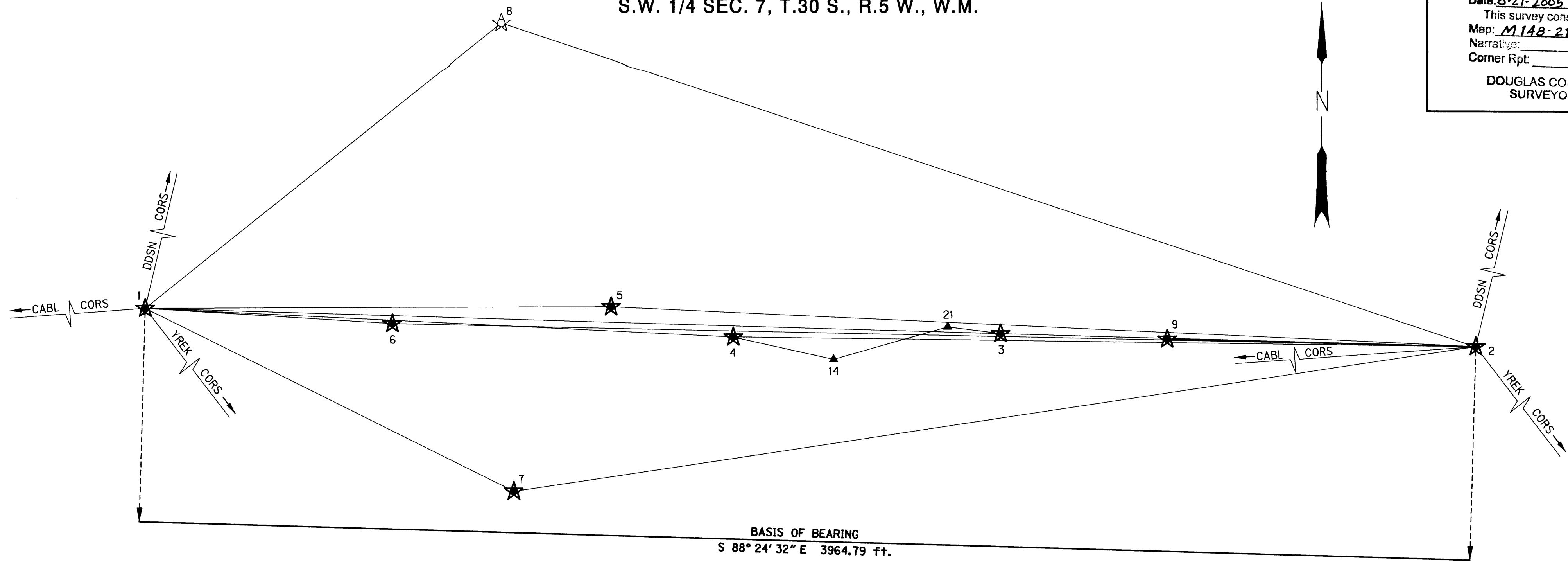


S.E. 1/4 SEC. 12, T.30 S., R.6 W., W.M.  
S.W. 1/4 SEC. 7, T.30 S., R.5 W., W.M.

FILED  
Date: 8-21-2005 By: JP  
This survey consists of: 6 shts.  
Map: M148-21 B  
Narrative: \_\_\_\_\_  
Corner Rpt: \_\_\_\_\_  
DOUGLAS COUNTY  
SURVEYOR

MAP FILE M148-21 B



RESIDUALS FOR ANGLES AND DISTANCES

AT	TO	DISTANCE*	DISTANCE RESIDUAL	ANGLE RESIDUAL
4	14	306.10 iff.	0.01 iff.	0°00'00"
14	21	353.50 iff.	0.01 iff.	0°00'02"
21	3	158.65 iff.	0.01 iff.	0°00'06"

BASIS OF BEARING AND CONTROL NETWORK SCHEMATIC  
NOT TO SCALE

\* CALCULATED HORIZONTAL DISTANCE IN FEET DERIVED FROM THE MEASURED SLOPE DISTANCE

1.96 SIGMA (95%) CONFIDENCE LEVEL LIMITS

POINT NO.	SEMI MAJOR	SEMI MINOR	ORIENTATION*
3	0.03 iff.	0.03 iff.	358°38'04"
4	0.03 iff.	0.03 iff.	180°49'34"
5	0.03 iff.	0.03 iff.	197°26'39"
6	0.03 iff.	0.03 iff.	198°30'15"
7	0.03 iff.	0.03 iff.	350°11'56"
8	0.03 iff.	0.03 iff.	196°22'07"
9	0.03 iff.	0.03 iff.	205°41'15"

\* NORTH AZIMUTH

FIXED POINTS NOT SUBJECT TO LEAST SQUARES ADJUSTMENT OR CONFIDENCE LEVEL ANALYSIS: 1,2

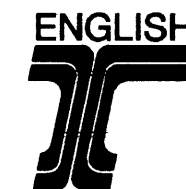
CONTROL NARRATIVE

PROJECT: S. UMPQUA RIVER (PRUNER RD.) BRIDGE  
LOCATION: DOUGLAS COUNTY  
OBEC PROJECT: 019-76.5  
SURVEY DATUM: LOCAL DATUM PLANE (LDP)  
HORIZONTAL - LDP DERIVED FROM OREGON SOUTH STATE PLANE, NAD 83(CORS96) EPOCH 2002, INTERNATIONAL FEET UNITS

LEGEND	
	FOUND MONUMENT USED AS GPS NETWORK POINT
	SET GPS NETWORK POINT
	SET NETWORK POINT
	LINES OF OBSERVATION

NETWORK POINT COORDINATE TABLE RPC = RED PLASTIC CAP

PT. ID.	LDP NORTHING	LDP EASTING	DESCRIPTION
1	489296.04	4157900.73	SET 5/8"x 30" REBAR W/ RPC "OBEC CONTROL"
2	489185.95	4161863.99	SET MAGNAIL & WASHER "OBEC CONTROL"
3	489223.06	4160448.23	SET 5/8"x 30" REBAR W/ RPC "OBEC CONTROL"
4	489213.15	4159651.91	SET MAGNAIL & WASHER "OBEC CONTROL"
5	489302.50	4159288.17	SET MAGNAIL & WASHER "OBEC CONTROL"
6	489251.42	4158636.93	SET MAGNAIL & WASHER "OBEC CONTROL"
7	488754.88	4158998.76	SET MAGNAIL & WASHER "OBEC CONTROL"
8	490143.90	4158961.14	FND 3 1/2" BRASS DISK SET IN CONCRETE MARKED "D499"
9	489207.37	4160944.02	SET MAGNAIL & WASHER "OBEC CONTROL"
14	489146.97	4159950.77	SET 5/8"x 30" REBAR W/ RPC "OBEC CONTROL"
21	489243.35	4160290.89	SET 5/8"x 30" REBAR W/ RPC "OBEC CONTROL"



REGISTERED PROFESSIONAL LAND SURVEYOR

*Andrew D. Ausland*

OREGON JULY 15, 2003 ANDREW D. AUSLAND 56136

RENEWAL DATE: DEC. 31, 2005 SIGNED: *A. D. Ausland*

OBEC CONSULTING ENGINEERS 1335 POPLAR DRIVE MEDFORD, OREGON 97504 TEL. (541) 774-5590 FAX. (541) 774-5591

HORIZONTAL CONTROL, RECOVERY AND RETRACEMENT MAP  
S. UMPQUA RIVER (PRUNER RD.) BRIDGE FOR DOUGLAS COUNTY, OREGON

ODOT KEY NO. 12550  
MAY 2005

RANDY FITCH *Randy Fitch* OBEC DESIGNED: A. AUSLAND PROJ. NO. 019-76.5 SHT. 2 OF 6  
APPROVED BY: GROUP MANAGER TITLE DRAWN: R. ODEAR CHK'D: RANDY FITCH FILE NO. 148255

Co.Rd. #20 M.P. 0.53-1.10

R20CNTRL

MAP FILE M148-21 B