

FILED
 Date: 1-18-2005 By: MWS
 This survey consists of:
 Map: M141-9
 Narrative:
 Corner Rpt:
 DOUGLAS COUNTY
 SURVEYOR

MAP FILE M141-9

**SURVEY FOR
 SENECA JONES TIMBER COMPANY
 NORTHEAST 1/4 OF SECTION 2,
 TOWNSHIP 22 SOUTH, RANGE 7 WEST, W.M.
 DOUGLAS COUNTY, OREGON
 JANUARY 3, 2005**

NARRATIVE

THE PURPOSE OF THIS SURVEY WAS TO MARK SOME OF THE PROPERTY LINES IN THE NE 1/4 OF SECTION 2 TOWNSHIP 22 SOUTH, RANGE 7 WEST, W.M. AND TO REMONUMENT THE E 1/16 CORNER FOR SENECA JONES TIMBER COMPANY.

MY BASIS OF BEARING FOR THIS SURVEY IS BETWEEN THE E 1/16 CORNER AND THE NE SECTION CORNER OF SAID SECTION 2 AS PER CS #M4-52 (HAINES). THE N 1/4 CORNER WAS REMONUMENTED AS WAS THE E 1/16 CORNER.

THIS SURVEY WAS PERFORMED USING A NIKON 520 TO MEASURE ANGLES AND DISTANCES. BEARING TREES REFERENCED ON THIS SURVEY WERE MEASURED WITH A 50" DIAMETER TAPE TO THE SIDE CENTER (SPIKED) OF THE TREE AND HAND COMPASS TO THE CENTER.

CORNER NOTES

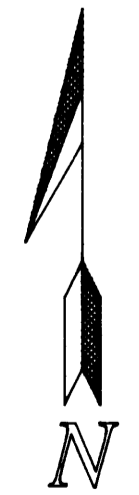
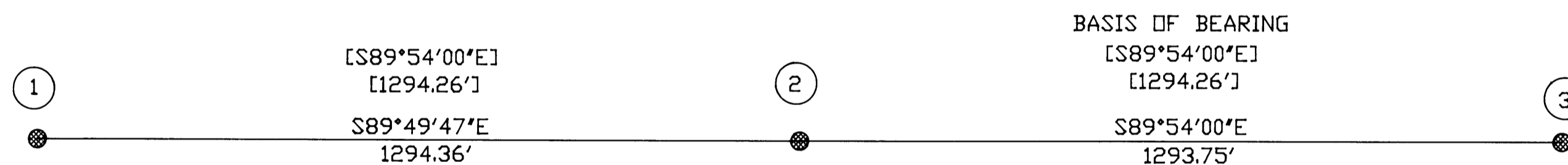
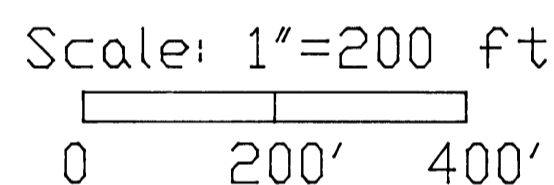
- (1) 1/4 SECTION CORNER SECTIONS 35/2
 FOUND: 1" T ROD W/ BRASS CAP (HAINES) 0.6 FT ABOVE GRADE.
 BTS: 16' W. HEMLOCK N20°W, 12.2 FT. (11.3 FT. TO HOSTETTER SPIKE IN ROOT FACE), OPEN FACE,
 POOR SCRIBING VISIBLE 'S35 1/4 BT' ON CAMBIUM LAYER
 16' W. HEMLOCK N72°W, 11.0 FT. (9.9 FT. TO HOSTETTER SPIKE IN ROOT FACE) OPEN FACE,
 POOR SCRIBING VISIBLE 'S 35 1/4 BT' ON CAMBIUM LAYER
 14' W. FIR, S51°E, 11.0 FT. (10.1 FT TO HOSTETTER SPIKE IN ROOT FACE), OPEN FACE,
 POOR SCRIBING VISIBLE 'S2 1/4 BI' ON CAMBIUM LAYER
 19' D. FIR, S75°W, 24.4 FT. BLAZED & SCRIBED '1/4 S2 BT'
 15' D. FIR, SOUTH, 17.4 FT. BLAZED & SCRIBED '1/4 S2 BT'
 21' W. FIR, N43°E, 40.9 FT. BLAZED & SCRIBED '1/4 S35 BT'
 NOTE: CORNER FALLS NORTH 80 FEET OF GRAVEL ROAD
- (2) E 1/16 CORNER SECTIONS 35/2
 FOUND: 1" T ROD W/ BRASS CAP (HAINES) 0.2 FT ABOVE GRADE @ BASE OF ROAD FILL (SOUTH SIDE).
 BTS: 52' (40' ORIGINAL) W. CEDAR S32°W, 20.7 FT. TO SPIKE, ROTTED OPEN HEALED FACE @ 3.5 FT. ABOVE GRADE
 15' D. FIR N55°W 63.6 FT. BLAZED & SCRIBED 'E1/16 S35 BT'
 SET 6' STEEL POST 1' NORTH
- (3) SECTION CORNER SECTIONS 35-36/2-1
 FOUND: 2.5" 1981 ~~2500~~ W/ BRASS CAP, FLUSH WITH GROUND.
 BTS: 13' W. HEMLOCK S43°E, 63.0 FT., HEALED FACE
 17' G. FIR S86°W, 19.5 FT., HEALED FACE
 37' D. FIR, N62°E, 53.8 FT., BARK SCRIBING VISIBLE
 30' W. CEDAR, N34°W, 52.5 FT. DEAD
 52' D. FIR, N44°W, 46.9 FT. NOTHING VISIBLE
 28' BL. MAPLE, S15°E, 14.5 FT. OPEN FACE
 SET 6' STEEL POST 1' WEST

LEGEND

● = CORNERS FOUND AS NOTED

REFERENCES

[] = CS #M 4-52, 1957, HAINES



REGISTERED
 PROFESSIONAL
 LAND SURVEYOR
Harvey M. Christensen
 OREGON
 MARCH 16, 1993
 HARVEY M. CHRISTENSEN
 2603



LICENSE RENEWAL DATE DEC 31, 2005

MAP # 22 07 02 00200

NORTHWEST TIMBERLAND CONSULTING, INC.
 4680 BRIARS - EUGENE, OR 97404-1113
 PHONE OR FAX (541) 461-4076

MAP FILE M141-9