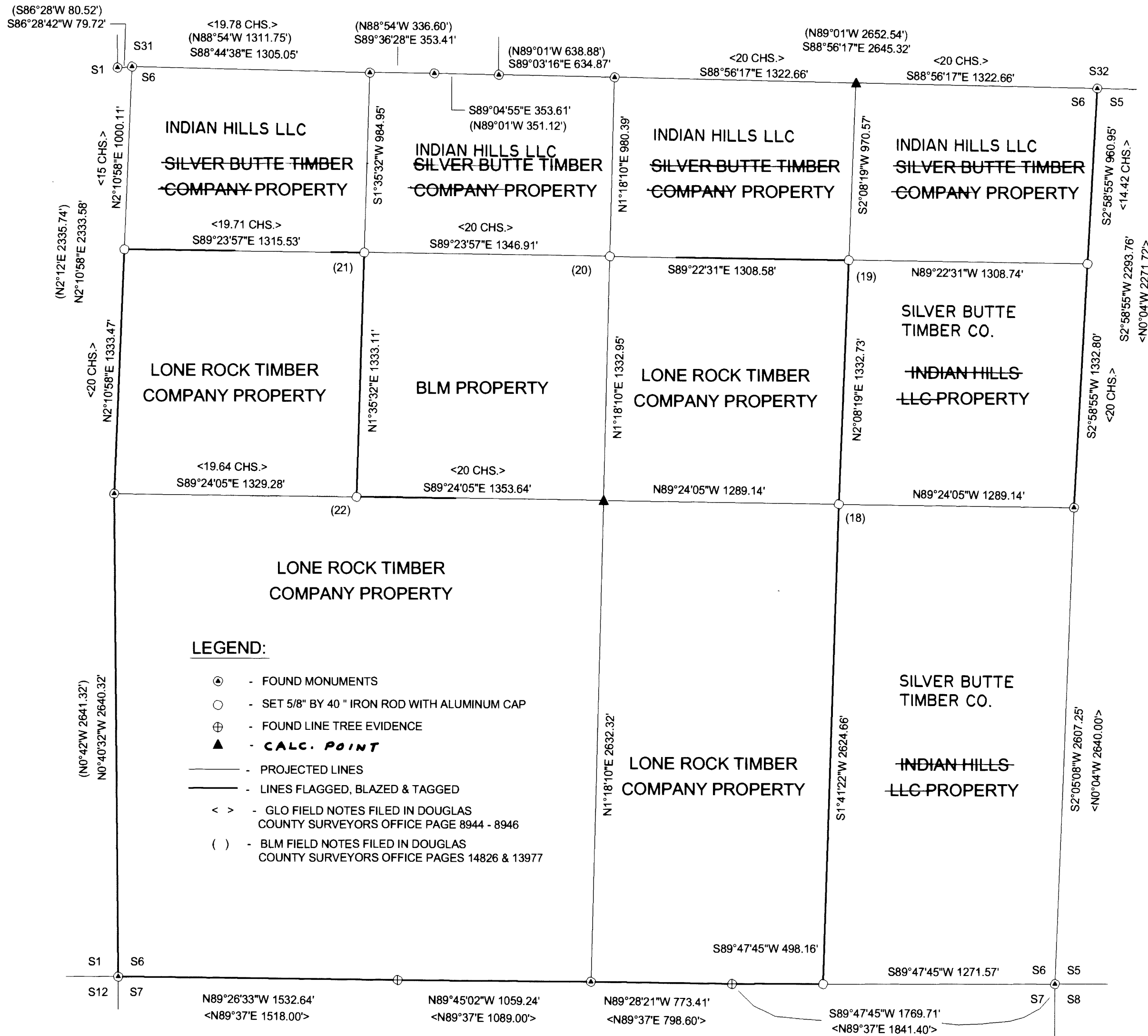


# LONE ROCK TIMBER MANAGEMENT COMPANY

TOWNSHIP 33 SOUTH, RANGE 4 WEST, W.M. SECTION 6 MANAGED BY LONE ROCK TIMBER LAND CO. DATE: MARCH 2005  
PO BOX 1127 ROSEBURG, OREGON 97470 SURVEY: M33-4W-6 TRACT- COAST RANGE RESOURCES DOUGLAS COUNTY, OREGON

FILED  
Date: 5-13-2005  
This survey consists of:  
Map M147-5742B  
Corner Rpt:  
X DOUGLAS COUNTY SURVEYOR



AFFIDAVIT OF CORRECTION:  
RECORDED NOV. 7, 2005 AS  
INSTRUMENT No. 2005-027895  
COUNTY CLERK RECORDS  
C.S. FILE 65/53-14

**CORNER INFORMATION:**

THE FOLLOWING IS A RECORD OF ALL CORNERS FOUND OR SET DURING THE COURSE OF THIS SURVEY.

- 18) THE CENTEREAST 1/16 CORNER FOR SECTION 6  
SET 5/8" X 40" IRON ROD WITH 2 1/2" ALUMINUM CAP MARKED LONE ROCK TIMBER CE 1/16 S6 2004 PLS 2004  
-- 11" DOUGLAS FIR BEARS S34°E, 31.0 FEET WE SCRIBE CE 1/16 S6 BT AND TAG  
-- 5" CEDAR BEARS N88 3/4°E, 5.55 FEET WE SCRIBE CE 1/16 S6 BT AND TAG  
CORNER LIES ON FLAT GROUND APPROX. 150 FEET NORTH OF DIRT ROAD.  
PUT METAL FENCE POST APPROX. 0.5 FEET NORTH.
- 19) THE NORTHEAST 1/16 TH CORNER FOR SECTION 6  
SET 5/8" X 30" IRON ROD WITH 2 1/2" ALUMINUM CAP MARKED LONE ROCK TIMBER NE 1/16 S6 2005 PLS 2291  
-- 13" DOUGLAS FIR BEARS N24°E, 13.4 FEET WE SCRIBE NE 1/16 S6 BT AND TAG TREE  
-- 9" DOUGLAS FIR BEARS N47°E, 17.2 FEET (WE SCRIBE NE 1/16 S6 BT AND TAG TREE  
CORNER LIES ON STEEP NORTH SLOPE 145 FEET NORTH OF ROCKY RIDGETOP. CORNER 1.4 FEET ABOVE GROUND IN MOUND OF STONES.
- 20) THE CENTERNORTH 1/16 CORNER OF SECTION 6  
SET 5/8" X 40" IRON ROD WITH 2 1/2" ALUMINUM CAP MARKED LONE ROCK TIMBER CN 1/16 S6 2004 PLS 2004  
-- 17" DOUGLAS FIR BEARS N26°E, 106.9 FEET WE SCRIBE CN 1/16 S6 BT AND TAG  
-- 5" X 4" X 6" ROCK OUTCROPPING WITH PK NAIL ON TOP BEARS S60 1/4°E, 37.2 FEET WE PAINT ROCK FLO ORANGE  
CORNER LIES APPROX. 50 FEET SOUTH OF THE TOP OF QUARTZ PEAK.  
WE PUT METAL FENCE POST APPROX. 1.0 FEET NORTH
- 21) THE NORTHWEST 1/16 TH CORNER OF SECTION 6  
SET 5/8" X 40" IRON ROD WITH 2 1/2" ALUMINUM CAP MARKED LONE ROCK TIMBER NW 1/16 S6 2005 PLS 2291  
-- 10" DOUGLAS FIR BEARS S12°E, 11.5 FEET WE SCRIBE NW 1/16 S6 BT AND TAG  
-- 23" DOUGLAS FIR BEARS N15°E, 31.8 FEET WE SCRIBE NW 1/16 S6 BT  
CORNER LIES ON STEEP SOUTHWEST SLOPE, 0>2 FEET ABOVE GROUND IN VERY ROCKY SOIL.
- 22) THE CENTERWEST 1/16 TH CORNER OF SECTION 6  
SET 5/8" X 40" IRON ROD WITH 2 1/2" ALUMINUM CAP MARKED LONE ROCK TIMBER CW 1/16 S6 2005 PLS 2291  
-- 7" DOUGLAS FIR BEARS N17 1/2°E, 22.0 FEET WE SCRIBE CW 1/16 S6 BT AND TAG  
-- 14" DOUGLAS FIR BEARS S32 3/4°E, 31.9 FEET WE SCRIBE CW 1/16 S6 BT  
CORNER LIES ON STEEP NORTH SLOPE IN HEAVY BRUSH

REGISTERED  
PROFESSIONAL  
LAND SURVEYOR  
*Ken W. Hoffine*  
OREGON  
JULY 16 1987  
KEN W. HOFFINE  
229  
EXPIRES 6-30-05

0 500'  
SCALE: 1" = 500'  
BASIS OF BEARING  
IS FROM GPS