

RECORD OF SURVEY
FOR: PACIFIC WEST TIMBER L.L.C.
& U. S. FOREST SERVICE
SEC. 10, SEC. 15, T20S, R11W, W.M.
DOUGLAS COUNTY, OREGON
1 MAY, 2005

NARRATIVE:

THE PURPOSE OF THIS SURVEY WAS TO SUBDIVIDE SECTIONS 10 AND 15 OF TOWNSHIP 20 SOUTH, RANGE 11 WEST OF THE WILLAMETTE MERIDIAN. LINES SHOWN AS POSTED AND CORNERS SHOWN AS MONUMENTED WERE AT THE REQUEST OF PACIFIC WEST TIMBER AND THE UNITED STATES FOREST SERVICE (USFS), PROCEDURAL ADVICE FOR SUBDIVISION OF SECTIONS 10 AND 15 WAS OBTAINED FROM THE PORTLAND OFFICE OF THE BUREAU OF LAND MANAGEMENT (BLM).

THE 1893 GENERAL LAND OFFICE SURVEY (GLO) BY WILLIAM THIEL SURVEYED THE NORTH LINE OF SECTION 10 AND THE WEST 1/2 OF SECTIONS 10 AND 15 WITH THE EAST 1/2 REMAINING UNSURVEYED. THE 1917 HOMESTEAD ENTRY SURVEY (HES) NO. 190 BY FREDERICK RASE RETRACES THE EAST 1/2 MILE OF THE NORTH LINE OF SECTION 10 AND CALCULATES THE CENTER OF SECTION 10 BASED ON ADDITIONAL CORNER TIES. THE WEST LINE OF SECTION 10 WAS RETRACED IN 1975 BY RONALD STUNTZNER WITH ADDITIONAL MONUMENTATION. IN 1978 THE NORTH-SOUTH CENTERLINE OF SECTION 15 AND THE SOUTH LINE OF SECTION 15 WAS SURVEYED BY RONALD STUNTZNER.

PRIMARY CONTROL WAS ESTABLISHED WITH AN ASHTECH GLOBAL POSITIONING SYSTEM (GPS) AND A NIKON TOTAL STATION. WITH THE EXCEPTION OF THE SOUTH 1/16 CORNER OF SECTIONS 9 AND 10 ALL CONTROLLING CORNERS WERE HELD IN THERE AS-TIED POSITION. THE WITNESS CORNER TO THE SOUTH 1/16 SET BY STUNTZNER IN 1975 WAS FOUND TO PLACE THE CORNER 4.22' FROM OUR CALCULATED POSITION. THE CORNER WAS MONUMENTED AT OUR CALCULATED POSITION AND THE EXISTING WITNESS CORNER WAS CALLED AS AN ACCESSORY. HES CORNER NO. 6 SET BY RASE WAS HELD TO CONTROL OF THE NORTH-SOUTH CENTERLINE OF SECTION 10 FOR ALIGNMENT ONLY, WITH THE CENTER OF SECTION CALCULATED AT THE MIDPOINT OF THE OVERALL DISTANCE BETWEEN NORTH AND SOUTH 1/4 CORNERS.

SECTION 15 CENTER WAS CALCULATED BY WEIGHTED MEAN OF THE NORTH AND SOUTH WEST 1/2 MILES AS RETRACED DURING THE COURSE OF THIS SURVEY.

THE BASIS OF BEARING FOR THIS SURVEY WAS THE CENTERLINE OF SECTION 15 AS RECORDED IN DOUGLAS COUNTY SURVEY FILE M73-7.

LINE SHOWN AS POSTED ON THIS PLAT WAS MARKED WITH ORANGE CARSONITE POSTS SET TO BE INTERVISIBLE IF THE BRUSH WERE REMOVED AND NOT TO EXCEED 150' +/-, ALSO CARSONITE POSTS WERE PLACED WITHIN 3' OF EACH CORNER MONUMENT AND 50' +/- OUT ON LINE. IN ADDITION TREES ALONG LINE WERE MARKED WITH RED PAINTED BLAZES. RED FLAGGING WAS ALSO TIED ON TRUE LINE.

CORNERS WERE MONUMENTED AS NOTED. ORANGE CARSONITE POSTS WERE PLACED AT ALL CORNERS. BEARING TREES WERE MARKED AS NOTED WITH THE FACE PAINTED RED AND A 6" RED BAND AROUND THE TREE. A BEARING TREE TAG WAS PLACED ON THE FRONT OF ALL TREES NOTED AND AN "ATTENTION" PLACARD WAS PLACED ON THE BACK.



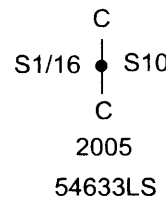
FILED
Date: 5-10-2005 By: NW
This survey consists of:
Map: M 147-53
Narrative:
Corner Rpt:
DOUGLAS COUNTY SURVEYOR



"A"
1/4 CORNER SECTIONS 3,10
FOUND COUNTY SURVEYORS 2-1/2" BRASS CAP DATED 1970 WITH THE FOLLOWING ACCESSORIES:
39" D. FIR BEARS S18-1/4"W 33.7' - HEALED FACE
20" D. FIR BEARS N70"W 10.4' - HEALED FACE
51" X 5' D. FIR STUMP BEARS N56"W 29.0' - HEALED FACE
17" ALDER BEARS S26"E 9.3' - BARK SCRIBING VISIBLE

"B"
CN1/16 SECTION 10 CORNER #6 HES 190
FOUND COUNTY SURVEYORS 2-1/2" BRASS CAP DATED 1970 WITH THE FOLLOWING ACCESSORIES:
39" D. FIR BEARS N65"E 31.7' - HEALED FACE
30" D. FIR BEARS N50"W 33.8' - HEALED FACE

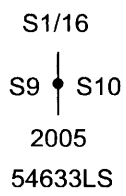
"C"
CS1/16 CORNER SECTIONS 10
SET 5/8" X 6" REBAR WITH 2-1/2" ALUMINUM CAP IN ROCK OUTCROP MARKED AS SHOWN, WITH THE FOLLOWING ACCESSORIES:
9" HEM. BEARS N84-1/2"W 78.3' - DOUBLE BLAZED, SCRIBED "CS1/16 S10 BT" PK NAIL WITH COPPER WASHER IN FACE MARKED 54633LS
9" D. FIR BEARS N72-1/2"E 57.8' - DOUBLE BLAZED, SCRIBED "CS1/16 S10 BT" PK NAIL WITH COPPER WASHER IN FACE MARKED 54633LS



"D"
1/4 CORNER SECTIONS 10, 15
FOUND COUNTY SURVEYORS 2-1/2" BRASS CAP DATED 1969 WITH THE FOLLOWING ACCESSORIES:
72" X 6" D. FIR STUMP BEARS N58"W 29.7' - NO MARKS
44" D. FIR BEARS N88"E 178.8' - HEALED FACE
48" D. FIR BEARS S64"E 184.0' - HEALED FACE
84" X 4" D. FIR STUMP BEARS S80"E 19.7' - AXE WORK VISIBLE
23" HEM. BEARS N78"W 5.4' - HEALED FACE
21" D. FIR BEARS S41"E 16.8' - HEALED FACE

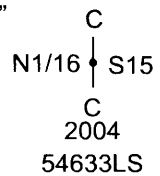
"E"
SECTION CORNER SECTIONS 9, 10, 15, 16
FOUND COUNTY SURVEYORS 2-1/2" BRASS CAP DATED 1969 WITH THE FOLLOWING ACCESSORIES:
8" HEM. ROTTED STUMP BEARS S62"W 9.9' - AXE WORK VISIBLE
15" HEM. BEARS S29"W 14.4' - HEALED FACE
14" HEM. BEARS N76"E 13.0' - HEALED FACE
14" HEM. BEARS N53"W 9.4' - HEALED FACE
NEW BT THIS SURVEY
13" HEM. BEARS S43-1/2"E 14.4' - DOUBLE BLAZED, SCRIBED "T20S R11W S15 BT" PK NAIL WITH COPPER WASHER IN FACE MARKED 54633LS

"F"
S1/16 CORNER SECTIONS 9, 10
SET 2-1/2" X 30" ALUMINUM PIPE WITH 3-1/4" USFS ALUMINUM CAP MARKED AS SHOWN, WITH THE FOLLOWING ACCESSORIES:
15" ALDER BEARS N52"E 28.4' - BARK SCRIBED "S1/16 S10 BT" PK NAIL WITH COPPER WASHER IN FACE MARKED 54633LS
14" ALDER BEARS N84"W 27.9' - BARK SCRIBED "S1/16 S9 BT" PK NAIL WITH COPPER WASHER IN FACE MARKED 54633LS
2-1/2" BRASS CAP MARKED IN PART "WC" DATED 1975 BEARS N6°09'01"W 31.51'

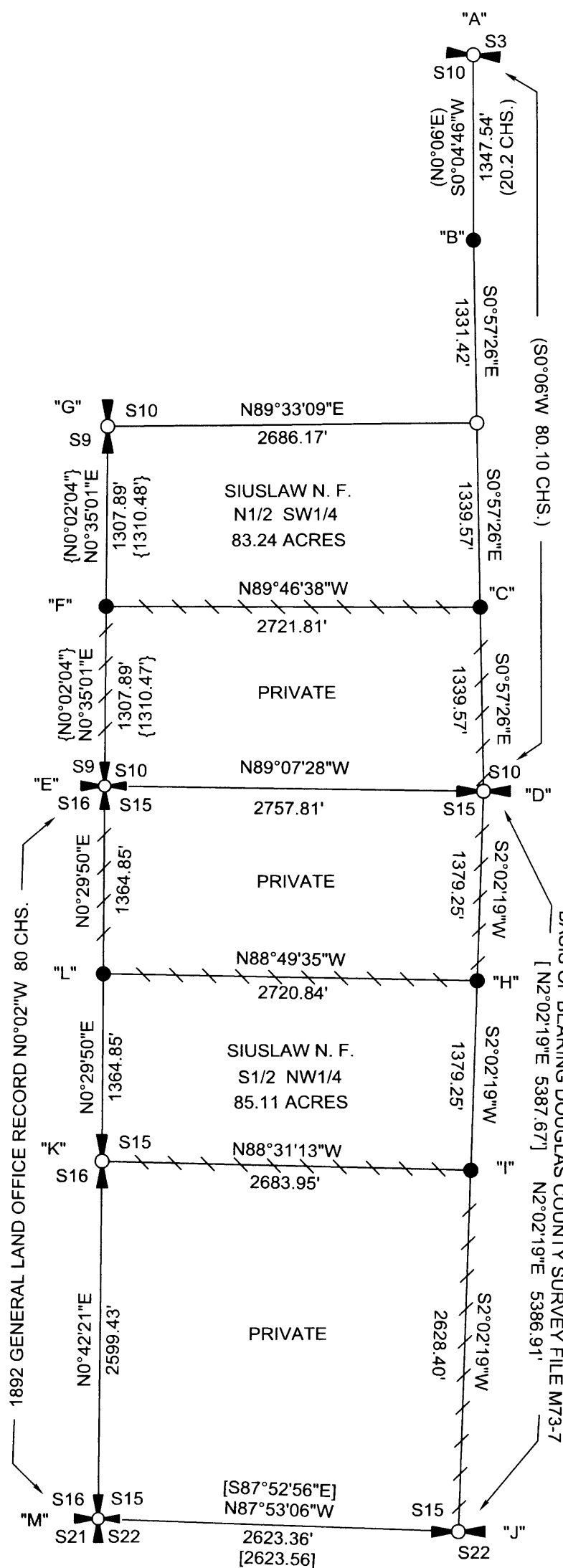
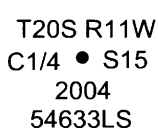


"G"
1/4 CORNER SECTIONS 9, 10
FOUND 2-1/2" BRASS CAP DATED 1975 WITH THE FOLLOWING ACCESSORIES:
37" HEM. BEARS N3"E 110.9' - OPEN FACE, SCRIBING VISIBLE
69" D. FIR BEARS N78"E 90.0' - HEALED FACE
15" HEM. BEARS N1-1/2"W 118.2' - HEALED FACE
1/2" IRON PIPE BEARS N16"E 6.6'

"H"
CN1/16 SECTION 15
SET 2-1/2" X 30" ALUMINUM PIPE WITH 3-1/4" USFS ALUMINUM CAP MARKED AS SHOWN, WITH THE FOLLOWING ACCESSORIES:
16" D. FIR BEARS N32-1/2"E 60.4' - DOUBLE BLAZED, SCRIBED "CN1/16 S15 BT"
PK NAIL WITH COPPER WASHER IN FACE MARKED 54633LS
20" D. FIR BEARS S40"E 42.6' - DOUBLE BLAZED, SCRIBED "CN1/16 S15 BT"
PK NAIL WITH COPPER WASHER IN FACE MARKED 54633LS



"I"
C1/4 SECTION 15
SET 2-1/2" X 30" ALUMINUM PIPE WITH 3-1/4" USFS ALUMINUM CAP MARKED AS SHOWN, WITH THE FOLLOWING ACCESSORIES:
29" HEM. BEARS N23"E 34.4' - DOUBLE BLAZED, SCRIBED "C1/4 S15 BT"
PK NAIL WITH COPPER WASHER IN FACE MARKED 54633LS
16" SPRUCE BEARS S40-1/2"E 31.0' - DOUBLE BLAZED, SCRIBED "C1/4 S15 BT" PK NAIL WITH COPPER WASHER IN FACE MARKED 54633LS
27" HEM. BEARS S30"W 29.0' - DOUBLE BLAZED, SCRIBED "C1/4 S15 BT"
PK NAIL WITH COPPER WASHER IN FACE MARKED 54633LS
7" SPRUCE BEARS N21-1/2"W 19.5' - DOUBLE BLAZED, SCRIBED "C1/4 S15 BT"
PK NAIL WITH COPPER WASHER IN FACE MARKED 54633LS



"J"
1/4 CORNER SECTIONS 15, 22
FOUND 2-1/2" BRASS CAP DATED 1978 WITH THE FOLLOWING ACCESSORIES:
38" D. FIR BEARS N84"E 67.2' - HEALED FACE
18" ALDER S2"W 37.7' - BARK SCRIBED
48" D. FIR SNAG BEARS N0"W 12.2' - NO MARKS
36" D. FIR STUMP BEARS S37"E 32.0' - NO MARKS

"K"
1/4 CORNER SECTIONS 15, 16
FOUND COUNTY SURVEYORS 2-1/2" BRASS CAP DATED 1968 WITH THE FOLLOWING ACCESSORIES:
40" D. FIR STUMP BEARS S51"E 7.6' - HEALED FACE
RECORD 30" S55"E 5.9' - BURNED FACE
35" D. FIR STUMP BEARS S20-1/2"W 10.2' - BURNED FACE
RECORD 38" 8.6' - HEALED FACE
3/4" GALVANIZED BOLT BEARS S0°53'W 14.50'
3/4" GALVANIZED BOLT BEARS S1°24'W 19.45'
NEW BT'S THIS SURVEY
24" HEM. BEARS N72-1/2"E 22.9' - DOUBLE BLAZED, SCRIBED "1/4 S15 BT" PK NAIL WITH COPPER WASHER IN FACE MARKED 54633LS
23" D. FIR BEARS S51-1/2"W 17.3' - DOUBLE BLAZED, SCRIBED "1/4 S16 BT" PK NAIL WITH COPPER WASHER IN FACE MARKED 54633LS

"L"
N1/16 SECTIONS 15, 16
SET 2-1/2" X 30" ALUMINUM PIPE WITH 3-1/4" USFS ALUMINUM CAP MARKED AS SHOWN, WITH THE FOLLOWING ACCESSORIES:
15" ALDER BEARS N70"W 3.0' - BARK SCRIBED
"N1/16 S16 BT" PK NAIL WITH COPPER WASHER IN FACE MARKED 54633LS
18" ALDER BEARS S46-1/2"E 21.6' - BARK SCRIBED
"N1/16 S15 BT" PK NAIL WITH COPPER WASHER IN FACE MARKED 54633LS

"M"
SECTION CORNER SECTIONS 15, 16, 21, 22
FOUND COUNTY SURVEYORS 2-1/2" BRASS CAP DATED 1978 WITH THE FOLLOWING ACCESSORIES:
UNRECORDED BRASS CAP BEARS N89°30'E 2.45'
12" ALDER STAUB BEARS S86-1/2"E 18.2' - FACE VISIBLE
60" D. FIR STUMP BEARS S63-1/2"W 4.6' - SCRIBING VISIBLE
22" CEDAR BEARS N16"E 19.8' - HEALED FACE
NEW BT'S THIS SURVEY
10" D. FIR BEARS S64"E 40.4' - BLAZED, SCRIBED T20S R11W S22 BT

- LEGEND
○ CALCULATED POINT NO MONUMENT SET
⊕ FOUND SECTION CORNER AS NOTED
⊙ FOUND 1/4 CORNER AS NOTED
● MONUMENT SET THIS SURVEY AS NOTED
▤ POSTED PROPERTY LINE AS DEFINED IN NARRATIVE
[] RECORD DATA DOUGLAS COUNTY
{ } RECORD DATA DOUGLAS COUNTY
() RECORD DATA 1916 U. S. DEPARTMENT OF AGRICULTURE

REGISTERED PROFESSIONAL LAND SURVEYOR
Ronald L. Rice
OREGON
JULY 9, 2002
RONALD L. RICE
54633LS
EXPIRES: 12-31-2006

Ward NorthWest, Inc.
P.O. BOX 105 FLORENCE, OR 97439
(541) 997-9201 FAX: 541-997-3546
FILE NAME: 03-98RTB.TRV
SCALE: 1000 FT/IN DATE: 5/1/05 DRAWN BY: RLR
JOB: 03-98 REVISION: SHEET: 1/1
This map drawn with TRAVERSE PC Software