

FILED
Date: 3-4-2005 By: JC
This survey consists of:
Map: H147-32
Narrative:
Corner Rpt:
DOUGLAS COUNTY SURVEYOR

LEGEND

PROJECTED LINES
SURVEYED LINES
PAINTED & BLAZED LINES
FOUND CORNERS
CORNERS SET
CALCULATED CORNERS
STREAM
FENCE LINE
ROAD CENTERLINE
RECORD MEASUREMENTS (BEARING, DISTANCE)

NARRATIVE

THE PURPOSE OF THIS SURVEY WAS TO LAYOUT LOTS 3, 4, 5 AND THE SE1/4 OF THE NE1/4 OF SECTION 7, TOWNSHIP 22 SOUTH, RANGE 11 WEST, WILLAMETTE MERIDIAN, DOUGLAS COUNTY, OREGON FROM DEED #2003-031586, FOR MENASHA FOREST PRODUCTS CORPORATION. THE CONTROLLING SURVEYS WERE THE 1857 GLO SURVEY BY HARVEY GORDON, A 1874 GLO SURVEY BY W. H. BYARS, A 1894 GLO SURVEY BY WILLIAM WHIPPLE, A 1910 GLO SURVEY BY CHARLES SLANG, A 1957 SURVEY BY S. O. NEWHOUSE M1-54, A 1958 CORRECTION SURVEY BY WARREN HOOTMAN M12-47, A 1962 SURVEY BY WARREN HOOTMAN RM1-31, A 1968 CORNER RENEWAL BY ARNOLD GIBSON CS55/101, A 1971 SURVEY BY JAMES BYRON M42-27, A 1973 SURVEY BY ARNOLD GIBSON M51-28, A 1977 SURVEY BY ROBERT WARD M65-4, A BLM SURVEY BY BOYD PETERSON VOL53, PG20225-39, A 1997 SURVEY BY GARY SMITHER M124-51, AND MY 2004 SURVEY M145-62.

THIS SECTION WAS INCORRECTLY SUBDIVIDED BY SURVEYS M1-54 & M12-47. IN THESE SURVEYS NO TIE IS SHOWN TO THE NW CORNER OF SECTION 7 AND 1320ft WAS USED IN PLACE OF PROPORTIONING THE CS1/16. THE SECTION IS THEN COMPLICATED BY LOTTINGS FROM TWO DIFFERENT GLO SURVEYS. ACREAGE FOR LOTS 3 & 4 WAS RETURNED BY W. H. BYARS IN 1874. THE REST OF SECTION 7 WAS RETURNED BY WILLIAM WHIPPLE IN 1894. FROM WHIPPLE'S SURVEY THE SOUTH AND WEST LINES OF THE SECTION ARE OF DIFFERENT LENGTH THAN WHEN LOTS 3 & 4 WERE RETURNED. ALSO, A 5ch DIFFERENCE BETWEEN THE ORIGINAL NOTES AND THE 1894 PLAT WAS FOUND IN THE SOUTH HALF OF THE WEST LINE OF SECTION 7. A 1910 RETRACEMENT SURVEY VERIFIED THE CLOSING DISTANCE FROM THE 1894 NOTES. THE INTENT OF THE 1894 PLAT IS TO MATCH UP WITH THE 1874 PLAT. TO KEEP FROM CREATING AN OVERLAP OR HIATUS THE SECTION WAS SUBDIVIDED BY A BEARING-BEARING INTERSECT USING THE W1/4, ESTABLISHED AT MIDPOINT, AND THE S1/4 POSITION FROM 1874. THE E1/16 ON THE SOUTH LINE WAS ESTABLISHED AT MIDPOINT, AND IS ONLY FOR SECTION 7. TWO CS1/16 WERE CREATED TO PROTECT LOTTING ACREAGES, ONE FOR THE 1874 PLAT AND ONE FOR THE 1894 PLAT. AN OPINION FROM THE BLM ON HOW TO SUBDIVIDE THIS SECTION HELPS TO SUPPORT THIS METHOD.

NO EVIDENCE OF THE CLOSING CORNER FOR SECTION 7 & 8 WAS FOUND. TIES FROM SURVEY M51-28 WERE USED TO PERPETUATE THE ORIGINAL POSITION AS ESTABLISHED BY S. O. NEWHOUSE IN SURVEY M1-54 (SEE DETAIL). THERE ALSO APPEARS TO BE A SETTING ERROR OF THE S1/16 BETWEEN SECTION 7 & 8 IN SURVEY M124-51. A CALCULATED POSITION WAS COMPUTED BY PROPORTIONATE METHOD BETWEEN THE 1/4 CORNER AND THE MONUMENTED CLOSING CORNER. A NEW MONUMENT WAS NOT SET FOR THIS S1/16. TIES TO EXISTING MONUMENTS, FROM THIS CALCULATED POSITION, ARE GIVEN IN THE CORNER NOTE.

SURVEY RM1-31 BY WARREN HOOTMAN SEPARATES OFF THE BOTTOM LAND. THE NE1/16 FROM HOOTMAN'S SURVEY WAS FOUND OUT OF POSITION AND NOT USED IN SUBDIVIDING THIS SECTION. A SMALL OVERLAP OF ABOUT 2ft WAS FOUND BETWEEN THE BOTTOM LAND AND THE SE1/4 OF THE NE1/4. IT RUNS FOR ABOUT 70ft FROM THE NE1/16 SOUTH TO THE FOUND IRON PIPE SET IN HOOTMAN'S BOTTOM LAND SURVEY. THE OWNER OF THE SE1/4 OF THE NE1/4 WAS DIFFERENT THAN THE OWNER THAT SEPARATED OFF THE BOTTOM LAND. WITH NO APPARENT OCCUPATION LINES TO HOOTMAN'S SURVEY, THE BOTTOM LAND SURVEY IS STOPPED WHEN IT INTERSECTS THE SE1/4 OF THE NE1/4. (SEE THE NE1/16 DETAIL)

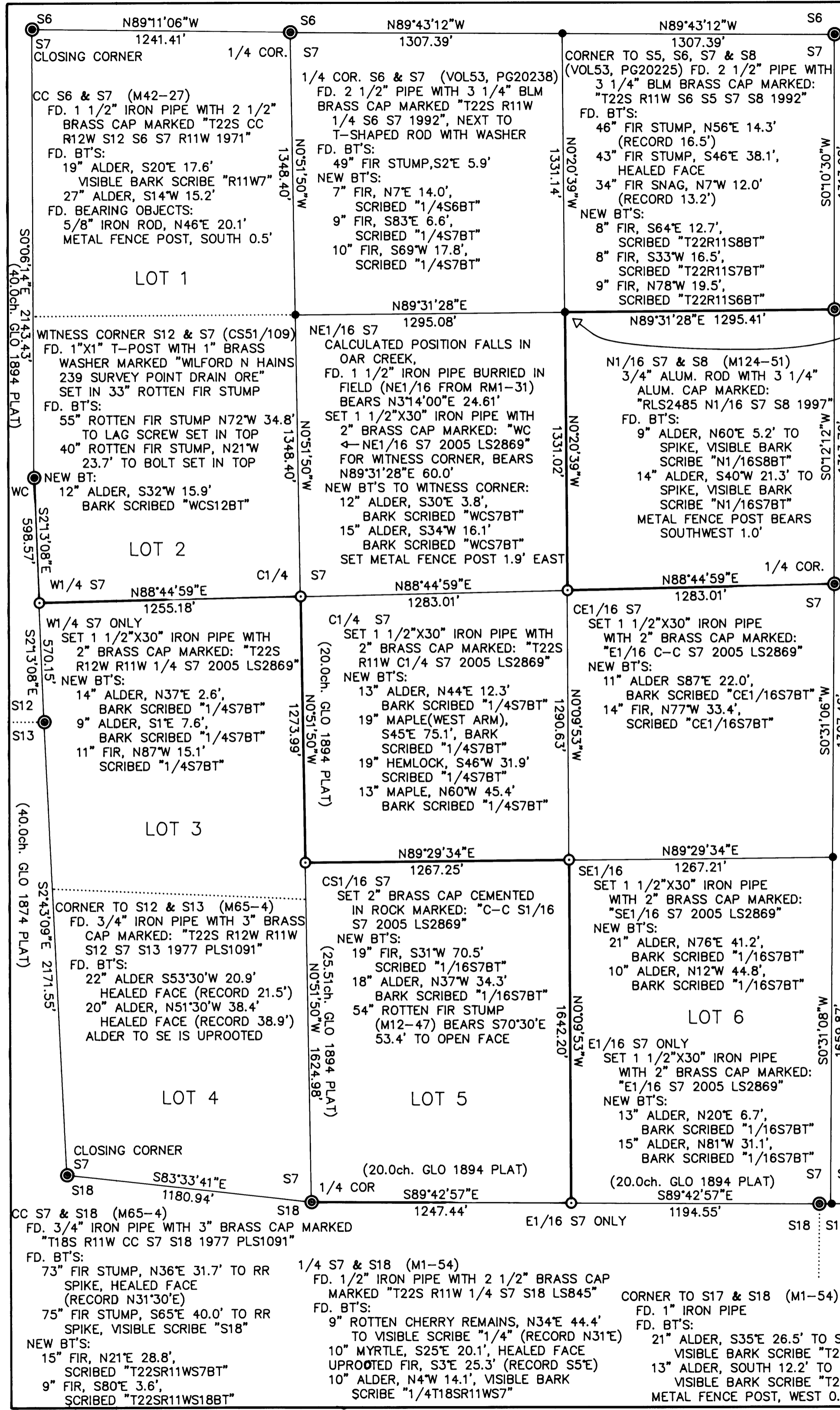
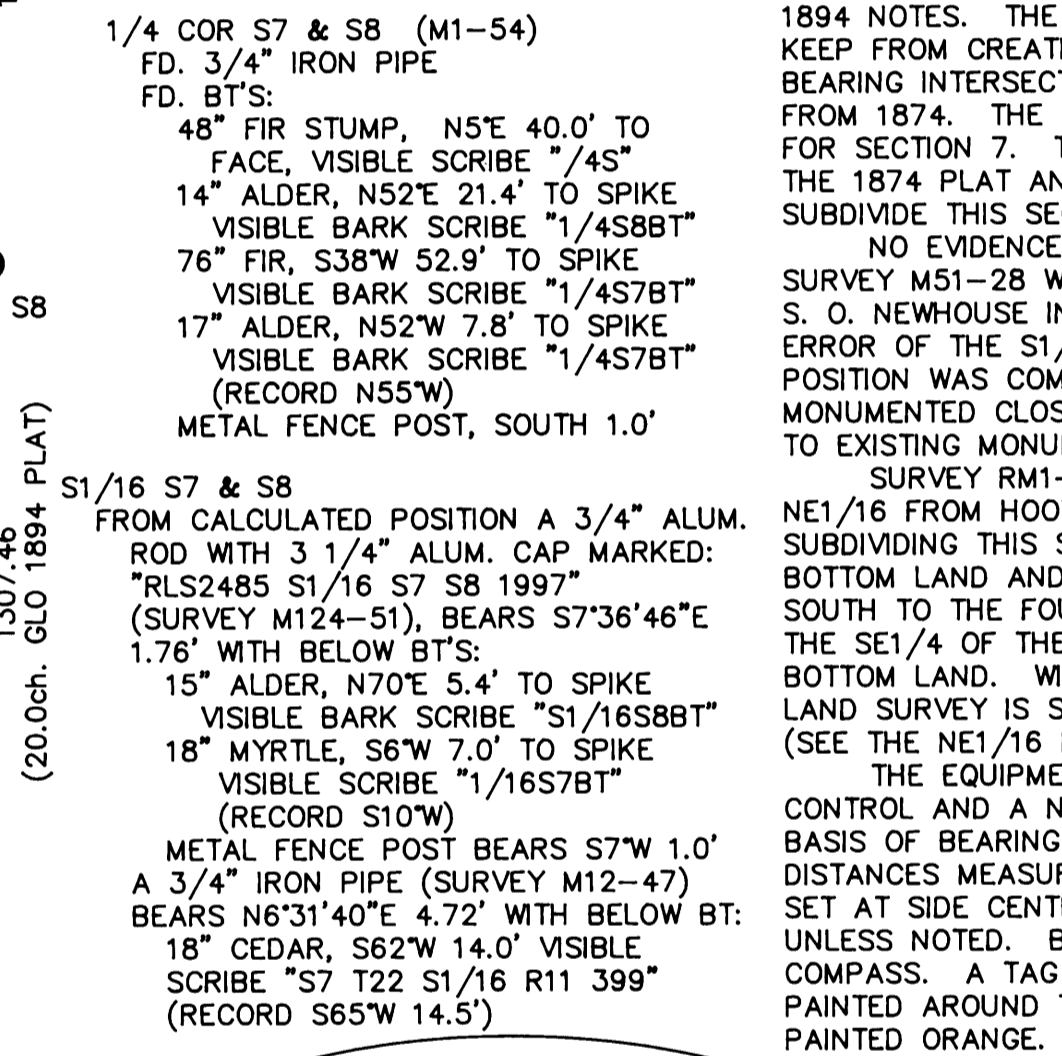
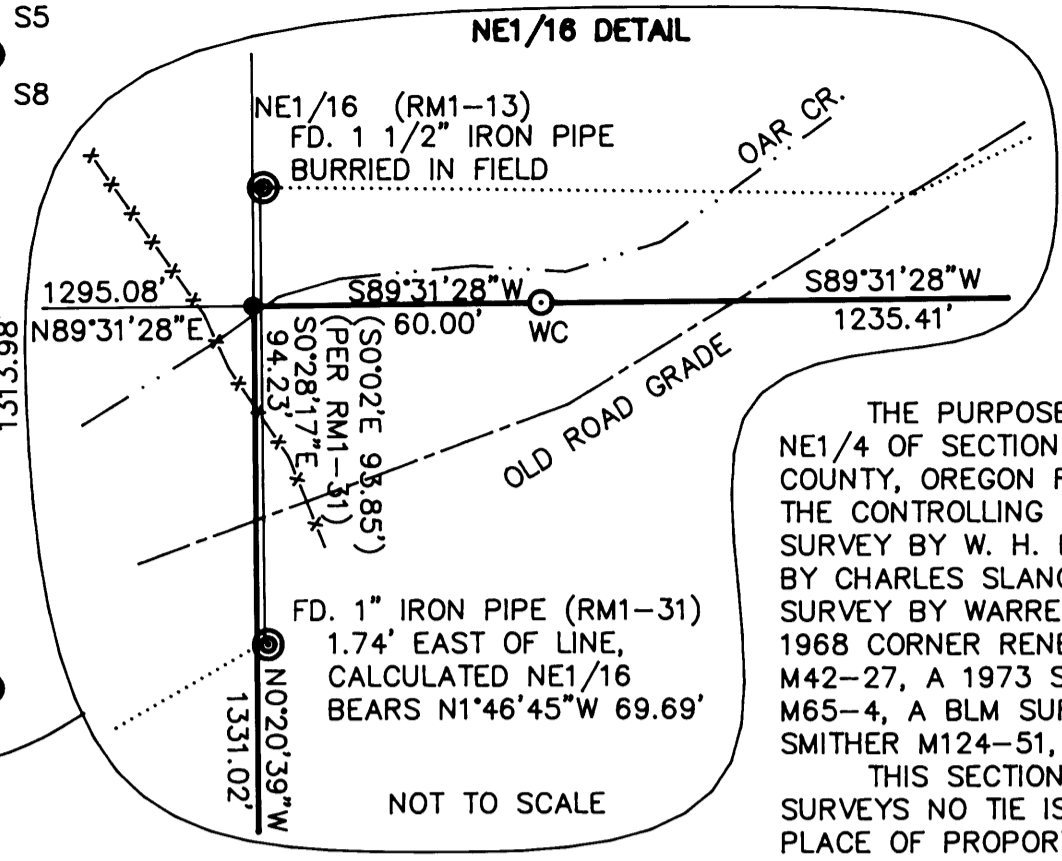
THE EQUIPMENT USED WAS TRIMBLE 4000 SERIES GPS RECEIVERS FOR TEMPORARY CONTROL AND A NIKON DTM530 TOTAL STATION WITH HP48GX DATA COLLECTOR. THE BASIS OF BEARING IS GEODETIC AS DETERMINED FROM THE GPS CONTROL SURVEY. DISTANCES MEASURED TO BEARING TREES ESTABLISHED IN THIS SURVEY ARE TO A SPIKE SET AT SIDE CENTER OF THE TREE. ALL OTHER DISTANCES ARE MEASURED TO SIDE CENTER UNLESS NOTED. BEARINGS WERE MEASURED TO THE CENTER OF THE TREE USING A HAND COMPASS. A TAG WAS ATTACHED TO THE TREE FACING THE CORNER WITH AN ORANGE BAND PAINTED AROUND THE TREE. LINE SHOWN AS MARKED ON THIS MAP WAS BLAZED AND PAINTED ORANGE. THE ASSISTING PERSONNEL WAS DOYCE ROSE.

SURVEYED BY: BRENT W. BACON
MENASHA FOREST PRODUCTS
P.O. BOX 588
NORTH BEND, OR. 97459
LICENSE RENEWAL: 12-31-2005

REGISTERED PROFESSIONAL LAND SURVEYOR

Brent W. Bacon

OREGON
JULY 14, 1998
BRENT W. BACON
2869



**MENASHA FOREST PRODUCTS
PROPERTY SURVEY
T22S R11W S7**

PROJECT NO: SCALE: 1" = 400'

DRAWN BY: B. BACON DATE: 2/22/05

CHECKED BY: J. MINOR SHT: OF:

APPROVED BY: 1 1