

MAP OF SURVEY

LOCATED in the NW and NE 1/4'S of Section 4, T. 30 S., R. 9 W., W.M.
in Douglas County, Oregon.

February 1, 2005

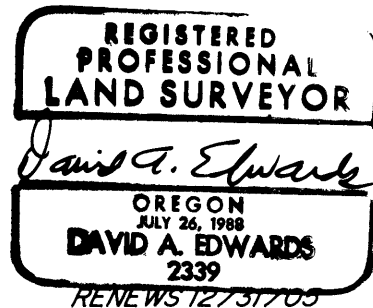
FILED

Date: 2-9-2005 By: JC
This survey consists of:
Map: M147-17
Narrative:
Corner Rpt:

DOUGLAS COUNTY
SURVEYOR

MAP FILE M147-17

SURVEYED FOR: SWANSON GROUP, INC.
P.O. BOX 250
GLENDALE, OREGON



SURVEYED BY: DAVID EDWARDS LAND SURVEYING
P.O. BOX 361
OAKLAND, OREGON 97462
PHONE: (541) 459-0512

LEGEND

- ⊙ INDICATES DOUGLAS COUNTY SURVEYOR OR B.L.M. BRASS CAP FOUND.
- INDICATES SPIKE FOUND AT CN 1/16 CORNER ACCORDING TO MEASUREMENTS TO FOUND BEARING TREES MARKED ON M 85-17.

————— INDICATES LINE BLAZED, POSTED AND FLAGGED.

() DENOTES RECORD DATA

SCALE: 1" = 600'

BASIS OF BEARINGS: M 85-17 AS SHOWN.

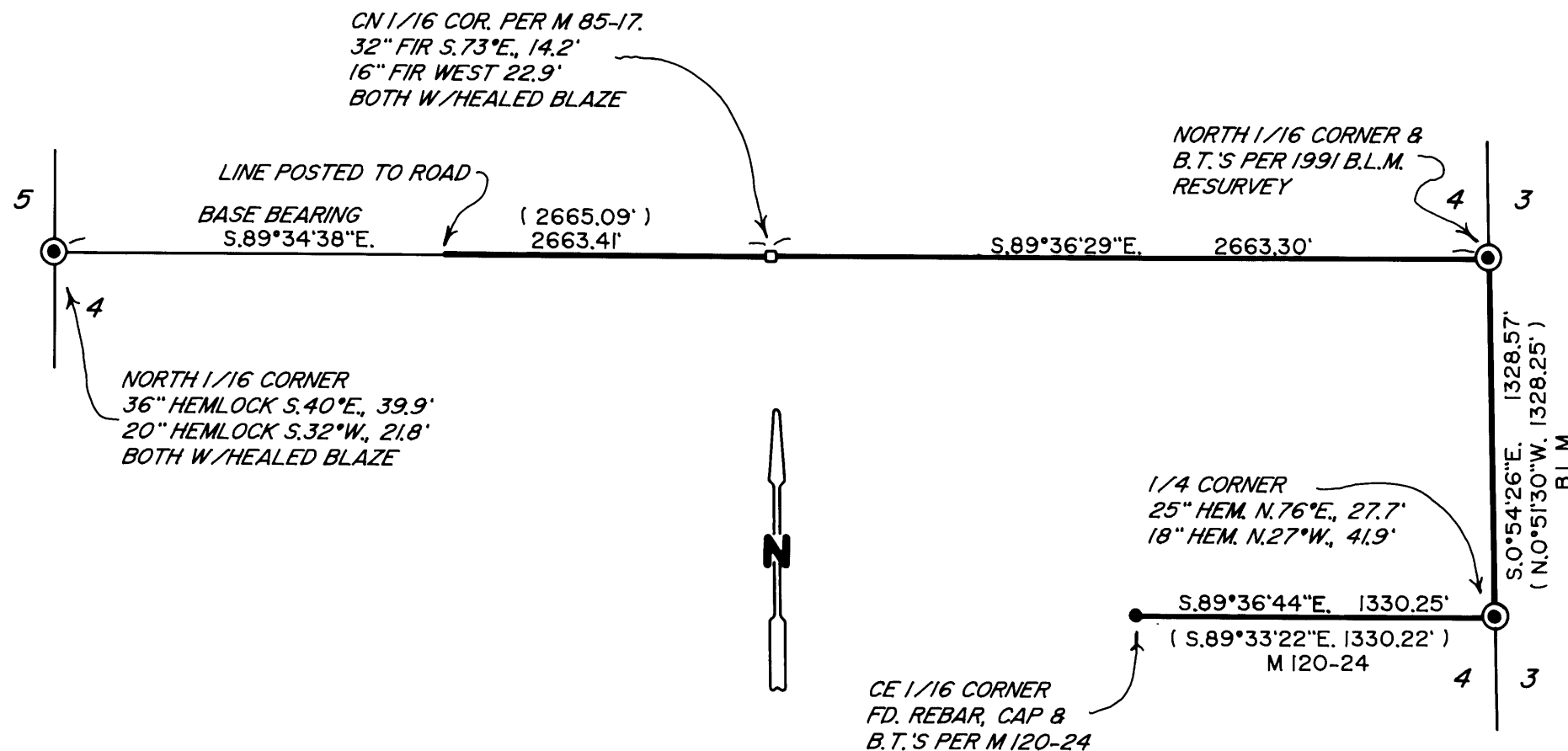
NARRATIVE

THE PURPOSE OF THIS SURVEY IS TO IDENTIFY THOSE BOUNDARIES SHOWN AS BOLD LINES HEREON. TRAVERSES WERE RUN NEAR SAID LINES TYING IN THE NECESSARY CONTROLLING CORNER MONUMENTS. THE RESULTING DATA MATCHES UP WELL WITH PREVIOUS SURVEYS. THE SUBJECT BOUNDARIES WERE MARKED BY BLAZING TREES ON EACH SIDE OF LINE, BY SETTING 6 FOOT STEEL POSTS ALONG THE LINE AT INTERVALS OF 300 FEET OR LESS AND BY HANGING A COMBINATION OF BLUE AND ORANGE FLAGGING ALONG THE TRUE LINE.

FIELD CREW: BRANT MILLER AND ERIC SPRINKLE.

EQUIPMENT: NIKON TOTAL STATION.

COMPS. AND DRAFTING: DAVID EDWARDS.



MAP FILE M147-17