

**NARRATIVE:**

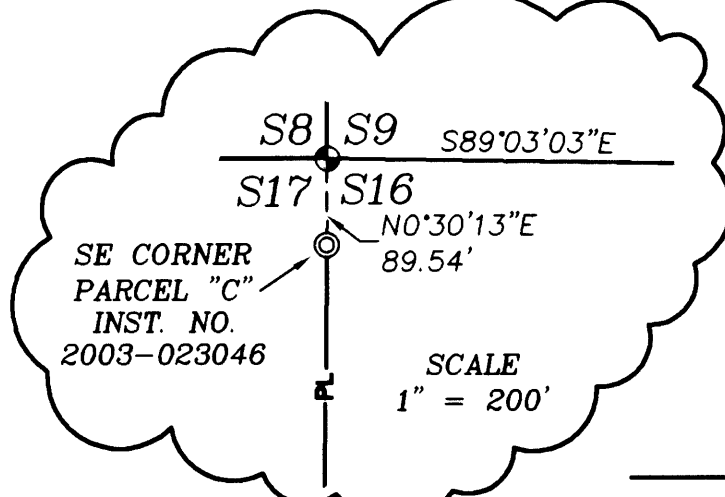
**SURVEY HISTORY:**  
ORIGINAL USGLO SURVEY BY WM. THIEL, DEPUTY SURVEYOR, UNDER CONTRACT NO. 567, DATED FEBRUARY 16, 1891.  
M 15-22 & CS 51/29, DATED JUNE 12, 1959, BY WILLIAM D. HOOTMAN, PLS 399, A SUBDIVISION OF SECTION 17, T.20S., R.11W.  
M 55-76, DATED APRIL 21, 1975, BY RONALD E. STUNTZNER, PE 6245, A SUBDIVISION OF SECTION 9, T.20S., R.11W.  
M 147-53, DATED MAY 1, 2005, BY RONALD L. RICE, PLS 54633, A SUBDIVISION OF SECTIONS 10 AND 15, T.20S., R.11W.  
INDIVIDUAL CORNER RENEWALS AS NOTED UNDER CORNER DESCRIPTIONS.

**SURVEY PURPOSE:**  
THE PURPOSE OF THIS SURVEY IS TO SUBDIVIDE SECTION 16, OF T20S, R11W, W.M., AND TO MONUMENT THE SOUTH 1/4 CORNER, THE CENTER 1/4 CORNER, THE CENTER NORTH 1/16 CORNER, AND THE NORTH 1/16 CORNER OF SECTIONS 17 AND 18 AND TO POST USFS BOUNDARY LINES AS SHOWN ON THE FACE OF THE PLAT. THE NORTHWEST CORNER, SOUTHWEST CORNER, NORTH 1/4 CORNER, AND EAST 1/4 CORNER ARE ORIGINAL CORNERS THAT HAVE BEEN PERPETUATED IN THEIR ORIGINAL POSITIONS UNDER PREVIOUS SURVEYS. THE SOUTHWEST CORNER AND THE WEST 1/4 CORNER WERE RESTORED BY PROPORTIONATE MEASUREMENT BY HOOTMAN IN 1959 PER M 15-22. I RESTORED THE SOUTH 1/4 CORNER BY PROPORTIONATE MEASUREMENT UNDER THIS SURVEY. USING THESE CORNER POSITIONS SECTION 16 WAS SUBDIVIDED AS PER THE MANUAL OF SURVEYING INSTRUCTIONS, 1973 AND THE LAWS OF THE STATE OF OREGON. THE SOUTHWEST CORNER OF PARCEL "C" OF THOSE USFS PROPERTIES DESCRIBED IN INSTRUMENT NO. 2003-023046 WHICH FALLS ON THE WEST LINE OF SECTION 16 WAS ALSO SET UNDER THIS SURVEY.

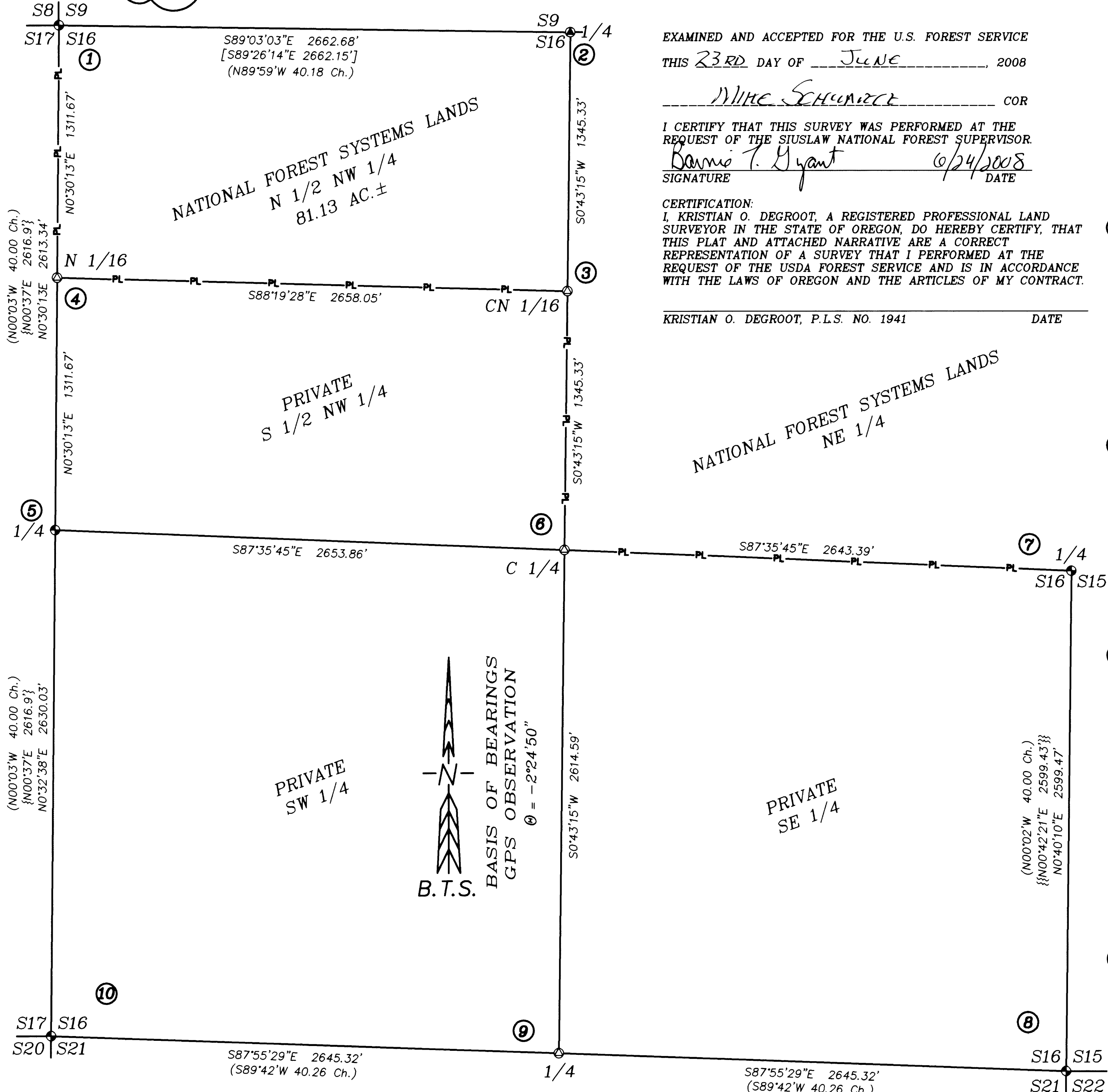
**SURVEY PROCEDURE:**  
A STATIC GPS CONTROL SURVEY WAS PERFORMED AND CONTROLLED BY A NGS OPUS SOLUTION WITH GPS OBSERVATIONS TAKEN TO 10 PROJECT CONTROL POINTS AND ADJUSTED BY LEAST SQUARES METHODS USING LEICA LGO SOFTWARE. OCS 1983 SOUTH ZONE STATE PLANE COORDINATES WERE COMPUTED FOR THE GPS CONTROL POINTS AND THEN WERE CONVERTED TO A LOCAL PROJECT COORDINATE SYSTEM USING AN COMBINED SCALE FACTOR OF 0.99994903 AND AN AVERAGE CONVERGENCE ANGLE FROM GRID TO GEODETIC OF -2'24.50". RTK AND CONVENTIONAL TRAVERSE LOOPS AND TIES WERE THEN SURVEYED TO CONTROLLING CORNERS AND ALONG BOUNDARY LINES POSTED AND WERE ALSO ADJUSTED BY LEAST SQUARES METHODS. ALL SURVEY OBSERVATIONS WERE TAKEN WITH A LEICA TCPR 1203 TOTAL STATION AND LEICA SYSTEMS 1200 GPS RECEIVERS AND WERE ADJUSTED BY LEAST SQUARES METHODS. THIS SURVEY WAS PERFORMED BY LES FANNING, ADAM DEGROOT, JOEL HERZBERG, RICK SANFORD, SCOTT McCURDY, AND TONY BELLANDO WITH COMPUTATIONS AND DRAFTING BY KRIS DEGROOT, ADAM DEGROOT, AND JOEL HERZBERG.

**LEGEND:**

- ⊙ = SET 2 1/2" x 30" ALUM. PIPE w/ 3 1/4" ALUMINUM CAP AS NOTED (SEE CORNER DESCRIPTIONS)
- ⊙ = SET 5/8" x 30" IRON ROD w/ 2" ALUM. CAP
- ⊙ = FOUND DCSO BCIP AS NOTED (SEE CORNER DESCRIPTIONS)
- ⊙ = FOUND M 55-76 BCIP AS NOTED (SEE CORNER DESCRIPTIONS)
- ( ) = RECORD PER 1892 USGLO SURVEY
- { } = RECORD PER M 15-22
- [ ] = RECORD PER M 55-76
- { } = RECORD PER M 147-53
- - - = PROPERTY LINES BRUSHED, BLAZED, PAINTED & POSTED WITH 6' CARSONITE POSTS



**RECORD OF SURVEY**  
**FIVEMILE CREEK CADASTRAL SURVEY**  
**USFS CONTRACT NO. AG-04R4-C-7-0110**  
**LOCATED IN**  
**SECTIONS 16, T20S, R11W, W.M.**  
**DOUGLAS COUNTY, OREGON**



EXAMINED AND ACCEPTED FOR THE U.S. FOREST SERVICE  
THIS 23<sup>RD</sup> DAY OF JUNE, 2008

*Wm. Schwartz* COR  
I CERTIFY THAT THIS SURVEY WAS PERFORMED AT THE REQUEST OF THE SIUSLAW NATIONAL FOREST SUPERVISOR  
*Dennis T. Hyant* 06/24/2008 DATE  
SIGNATURE

**CERTIFICATION:**  
I, KRISTIAN O. DEGROOT, A REGISTERED PROFESSIONAL LAND SURVEYOR IN THE STATE OF OREGON, DO HEREBY CERTIFY THAT THIS PLAT AND ATTACHED NARRATIVE ARE A CORRECT REPRESENTATION OF A SURVEY THAT I PERFORMED AT THE REQUEST OF THE SIUSLAW NATIONAL FOREST SUPERVISOR WITH THE LAWS OF OREGON AND THE ARTICLES OF MY CONTRACT.

KRISTIAN O. DEGROOT, P.L.S. NO. 1941 DATE

**CORNER DESCRIPTIONS:**

ALL NEW BEARING TREES HAVE DOUBLE BLAZED FACES WITH A BRASS WASHER STAMPED "PLS 1941" NAILED INTO THE LOWER BLAZE. BEARINGS ARE TAKEN TO THE CENTER OF THE TREE AT THE ROOT CROWN AND DISTANCES ARE MEASURED TO A NAIL IN THE ROOT CROWN AT THE SIDE AND CENTER OF THE TREE WITH A TOTAL STATION. ALL BEARING TREES HAVE A 6" RED BAND PAINTED AROUND THE TREE AND THE BLAZED FACE PAINTED RED AND USFS 54-3 BEARING TREE AND 54-9 LAND SURVEY MONUMENT SIGNS NAILED TO THE TREE. ALL NEW 5/8" x 30" IRON ROD REFERENCE MONUMENTS HAVE A PLASTIC CAP STAMPED "BTS ENG-SURV".

FILED  
Date: 6/30/2008 By: JD  
This survey consists of:  
Map: M146-80  
Narrative: \_\_\_\_\_  
Corner Rpt: \_\_\_\_\_  
DOUGLAS COUNTY SURVEYOR

① **S8/S9/S16/S17 PLS ID. NO. 300500**  
FOUND: A 1 1/2" IRON POST BY R. SMITH, DOUGLAS CO. SURVEYOR'S OFFICE, IN 1992 PER C.S. FILE 64/23, FIRMLY SET, BURIED 20" BELOW GROUND, WITH A 2 1/2" BRASS CAP STAMPED:

DOUGLAS COUNTY SURVEYORS OFFICE  
T20S  
S8 | S9 R  
S17 | S16 11  
1992 W

FROM WHICH AN ORIGINAL BEARING TREE BY THIEL IN 1891:  
A 84" CEDAR BEARS S.41°W., 143.2 FT. WITH NO BLAZES.  
AND BEARING TREES BY R. SMITH, IN 1992 PER C.S. FILE 64/23:  
A 37" HEMLOCK BEARS N.19°30'W., 401.0 FT. WITH HEALED DOUBLE BLAZE (REC. N.20°45'W., 401.2 FT.)  
A 19" ALDER BEARS N.61°30'E., 363.4 FT. WITH ROTTED FACE (REC. N.60°30'E., 363.6 FT.)  
A 13" RED CEDAR BEARS S.72°45'E., 521.1 FT. WITH HEALED BLAZE (REC. S.74°E.)  
THE WITNESS CORNER BY F. POWELL, DOUGLAS CO. SURVEYOR'S OFFICE, IN 1969 PER C.S. FILE 53/66, WAS FOUND LAYING IN FIVE MILE CREEK, WASHED OUT OF POSITION BY CREEK BANK EROSION

② **1/4 S9/S16 PLS ID. NO. 340500**  
FOUND: A 2" IRON POST BY R.E. STUNTZNER IN 1975 PER M55-76, FIRMLY SET, PROJECTING 6" ABOVE THE GROUND, WITH A 2 1/2" BRASS CAP STAMPED:

T20S R11W  
1/4 S9  
S16  
1975  
PE 6245

FROM WHICH AN ORIGINAL BEARING TREE BY THIEL IN 1891:  
A 24" ROTTED HEMLOCK STUMP BEARS S.70°45'W., 25.7 FT. WITH A ROTTED FACE (REC. S.70 1/2°W., 39 LKS.)  
AND BEARING TREES BY STUNTZNER IN 1975 PER M55-76:  
A 28" FIR BEARS S.73°15'E., 36.3 FT. WITH A HEALED BLAZE (REC. S.73°E., 36.2 FT.)  
A 21" HEMLOCK BEARS N.46°15'W., 52.7 FT. WITH A HEALED BLAZE (REC. N.45°W., 52.8 FT.)  
AND NEW BEARING TREES:  
A 17" ALDER BEARS N.4°45'E., 45.3 FT. SCRIBED "1/4 S9 BT"  
A 16" HEMLOCK BEARS S.13°45'W., 70.4 FT. SCRIBED "1/4 S16 BT"

③ **CN 1/16 S16 PLS ID. NO. 340480**  
SET: A 2 1/2" X 30" ALUMINUM POST, 27" IN GROUND WITH 3 1/4" ALUMINUM CAP STAMPED:

USDA FOREST SERVICE  
T20S R11W  
CN 1/16 S16  
C  
2008  
PLS 1941

FROM WHICH NEW BEARING TREES:  
A 13" SPRUCE BEARS N.52°15'E., 34.7 FT. SCRIBED "CN 1/16 S16 BT"  
A 15" ALDER BEARS N.44°15'W., 18.3 FT. BARK SCRIBED "CN 1/16 S16 BT"

④ **N 1/16 S16/S17 PLS ID. NO. 300480**  
SET: A USFS 2 1/2" X 30" ALUMINUM POST, 24" IN GROUND WITH 3 1/4" ALUMINUM CAP STAMPED:

USDA FOREST SERVICE  
T20S R11W  
N 1/16  
S17 | S16  
2008  
PLS 1941

FROM WHICH NEW BEARING TREES:  
A 25" HEMLOCK BEARS N.9°45'E., 36.8 FT. SCRIBED "N 1/16 S16 BT"  
A 6" HEMLOCK BEARS S.56°15'W., 28.1 FT. SCRIBED "N 1/16 S17 BT"

⑤ **1/4 S16/S17 PLS ID. NO. 300440**  
FOUND: A 1 1/2" IRON POST BY J. POWELL, DOUGLAS CO. SURVEYOR'S OFFICE IN 1969 PER C.S. FILE 53/66, NOW FIRMLY SET, PROJECTING 8" ABOVE THE TOP OF A NEW 24" DIAM. X 8" HIGH MOUND OF STONE WITH 2 1/2" BRASS CAP STAMPED:

COUNTY SURVEYORS OFFICE  
T20S R11W  
1/4 S17 | S16  
1969

FROM WHICH A BEARING TREE BY HOOTMAN IN 1959 PER M15-22:  
A 36" D.FIR STUMP BEARS N.87°45'E., 19.3 FT. WITH ROTTED FACE.(REC. N.85°E., 20.0 FT.)  
AND A BEARING TREE BY POWELL IN 1969 PER C.S. FILE 53/66:  
A 30" HEMLOCK BEARS N.30°15'E., 22.8 FT. WITH HEALED SINGLE BLAZE (REC. N.29°E., 23.6 FT.)  
AND NEW BEARING TREES:  
A 21" HEMLOCK BEARS S.29°15'E., 26.7 FT. SCRIBED "1/4 S16 BT"  
A 16" D.FIR BEARS S.32°30'W., 17.1 FT. SCRIBED "1/4 S17 BT"  
A 19" D.FIR BEARS N.82°45'W., 14.9 FT. SCRIBED "1/4 S17 BT"

⑥ **C 1/4 S16 PLS ID. NO. 340440**  
SET: A 2 1/2" X 30" ALUMINUM POST, 26" IN GROUND WITH 3 1/4" ALUMINUM CAP STAMPED:

USDA FOREST SERVICE  
T20S R11W  
C 1/4 S16  
2008  
PLS 1941

FROM WHICH NEW BEARING TREES:  
A 9" SPRUCE BEARS S.83°30'W., 23.3 FT. SCRIBED "C 1/4 S16 BT"  
A 15" D.FIR BEARS N.19°15'W., 46.4 FT. SCRIBED "C 1/4 S16 BT"  
AND NEW REFERENCE MONUMENTS:  
A 5/8" X 30" IRON ROD BEARS N.85°59'26"E., 16.08 FT.  
A 5/8" X 30" IRON ROD BEARS S.20°37'10"E., 13.87 FT.

⑦ **1/4 S16/S16 PLS ID. NO. 400440**  
FOUND: A 1 1/4" IRON POST BY V.R. TRACY, DOUGLAS CO. SURVEYOR'S OFFICE IN 1968 PER C.S. FILE 53/66, FIRMLY SET, PROJECTING 8" ABOVE THE TOP OF A NEW 24" DIAM. X 8" HIGH MOUND OF STONE WITH A 2 1/2" BRASS CAP STAMPED:

COUNTY SURVEYORS OFFICE  
T20S R11W  
1/4 S16 | S16  
1968

FROM WHICH ORIGINAL BEARING TREES BY THIEL IN 1891:  
A 40" D. FIR STUMP BEARS S.51°E., 7.1 FT. WITH HEALED FACE (REC. S.55°30'E., 9 LKS. TO FACE).  
A 35" D. FIR STUMP BEARS S.20°30'W., 10.2 FT. WITH BURNED FACE (REC. 13 LKS. TO FACE).  
AND BEARING OBJECTS BY DCSO IN 1968:  
A 3/4" IRON BOLT BEARS S.111°W., 19.45 FT. (M 147-53 REC. S.124°W.)  
A 3/4" IRON BOLT BEARS S.0°31'W., 14.52 FT. (M 147-53 REC. S.0°53'W., 14.50")  
AND BEARING TREES BY RONALD RICE IN 2005 PER M147-53:  
A 26" HEMLOCK BEARS N.72°30'E., 22.9 FT. WITH SCRIBE MARKS VISIBLE ON PITCHED OVER DOUBLE BLAZE.  
A 24" D.FIR BEARS S.51°45'W., 17.2 FT. WITH SCRIBE MARKS VISIBLE ON PITCHED OVER DOUBLE BLAZE (REC. S.51°30'W., 17.3 FT.)

⑧ **S16/S16/S21/S22 PLS ID. NO. 400400**  
FOUND: A 1 1/2" IRON POST BY E.R. ALVARADO, DOUGLAS CO. SURVEYOR'S OFFICE IN 1978 PER C.S. FILE 59/46, NOW FIRMLY SET AND PROJECTING 12" ABOVE THE TOP OF A NEW 48" DIAM. X 48" HIGH MOUND OF STONE WITH A 2 1/2" BRASS CAP STAMPED:

DOUGLAS COUNTY SURVEYORS OFFICE  
T20S R11W  
S16 | S16  
S21 | S22  
1978

FROM WHICH AN ORIGINAL BEARING TREE BY THIEL IN 1891:  
A 60" D. FIR STUMP BEARS S.63°30'W., 4.6 FT., WITH ILLEGIBLE SCRIBE MARKS VISIBLE ON ROTTEN BLAZE.  
AND BEARING TREES BY ALVARADO IN 1978 PER C.S. FILE 59/46:  
A 22" CEDAR BEARS N.16°E., 19.8 FT. WITH HEALED BLAZE  
AND A BEARING TREE BY RONALD RICE IN 2005 PER M147-53:  
A 11" D.FIR BEARS S.64°E., 40.4 FT. WITH PITCHED OVER BLAZE.  
AND A REFERENCE MONUMENT BY DENNIS CROW IN 1973:  
A 1" IRON PIPE WITH A 2 1/2" BRASS CAP STAMPED "T20S R11W S16 S15 S21 S22 1973 845LS" BEARS N.89°30'E., 2.45 FT.  
AND NEW BEARING TREES:  
A 8" D.FIR BEARS S.11°W., 24.6 FT. SCRIBED "T20S R11W S21 BT"  
A 9" D.FIR BEARS N.54°30'W., 66.5 FT. SCRIBED "T20S R11W S16 BT"

⑨ **1/4 S16/S21 PLS ID. NO. 340400**  
FOUND: I FIND NO REMAINING EVIDENCE OF THE ORIGINAL CORNER MONUMENT OR ACCESSORIES.  
SET: AT PROPORTIONATE DISTANCE I SET A 2 1/2" X 30" ALUMINUM POST, 30" IN GROUND WITH 3 1/4" ALUMINUM CAP STAMPED:

USDA FOREST SERVICE  
T20S R11W  
S16  
1/4 S21  
2008  
PLS 1941

FROM WHICH NEW BEARING TREES:  
A 8" D.FIR BEARS N.18°45'E., 13.5 FT. SCRIBED "1/4 S16 BT"  
A 11" D.FIR BEARS S.46°30'E., 11.8 FT. SCRIBED "1/4 S21 BT"  
A 23" D.FIR BEARS S.55°45'W., 77.3 FT. SCRIBED "1/4 S21 BT"  
A 11" D.FIR BEARS N.54°45'W., 34.3 FT. SCRIBED "1/4 S16 BT"

⑩ **S16/S17/S20/S21 PLS ID. NO. 300400**  
FOUND: A 1 1/2" IRON POST BY J. POWELL, DOUGLAS CO. SURVEYOR'S OFFICE IN 1969 PER C.S. FILE 53/66, FIRMLY SET, PROJECTING 12" ABOVE THE GROUND, WITH 2 1/2" BRASS CAP STAMPED:

COUNTY SURVEYORS OFFICE  
T20S R11W  
S17 | S16  
S20 | S21  
1969

FROM WHICH BEARING TREES BY HOOTMAN IN 1959 PER M15-22:  
A 29" ROTTED HEMLOCK STUMP BEARS S.36°45'E., 27.3 FT. WITH SCRIBE MARKS VISIBLE (REC. S.34°E., 28.5 FT.).  
A 29" CEDAR STUMP BEARS S.75°15'W., 68.1 FT. WITH SCRIBE MARKS VISIBLE (REC. S.60°W., 69.2 FT.).  
AND A BEARING TREE BY DCSO IN 1969:  
A 21" ROTTED HEMLOCK STUMP BEARS N.72°E., 45.9 FT. (REC. 45.7 FT.)  
AND BEARING TREES BY BRENT BACON IN 2002 PER M141-10:  
A 9" ALDER BEARS N.51°45'E., 6.3 FT. FULL BARK SCRIBING VISIBLE (REC. N.51°E., 6.0 FT.).  
A 12" ALDER BEARS S.54°15'W., 13.3 FT. FULL BARK SCRIBING VISIBLE (REC. S.53°W.).  
AND NEW REFERENCE MONUMENTS:  
A 5/8" X 30" IRON ROD WITH PC BEARS S.45°15'37"E., 11.38 FT.  
A 5/8" X 30" IRON ROD WITH PC BEARS N.52°29'00"W., 12.11 FT.

REGISTERED PROFESSIONAL LAND SURVEYOR  
*Kristian O. Degroot*  
OREGON JULY 17, 1991  
KRISTIAN O. DEGROOT 1941  
RENEWAL DATE: 12-31-09

**BTS ENGINEERING & SURVEYING, INC.**  
431 S.E. MAIN ST., ROSEBURG, OR 97470  
PHONE (541) 673-0966 FAX (541) 673-0105

SCALE: 1" = 400'  
DATE: JUNE 17, 2008  
FOR: SIUSLAW NATIONAL FOREST 4077 SW RESEARCH WAY CORVALLIS, OR 97339-1148  
JOB #: 07-073  
FILE: 07-073 Section 16.DWG  
SHEET 1 OF 1