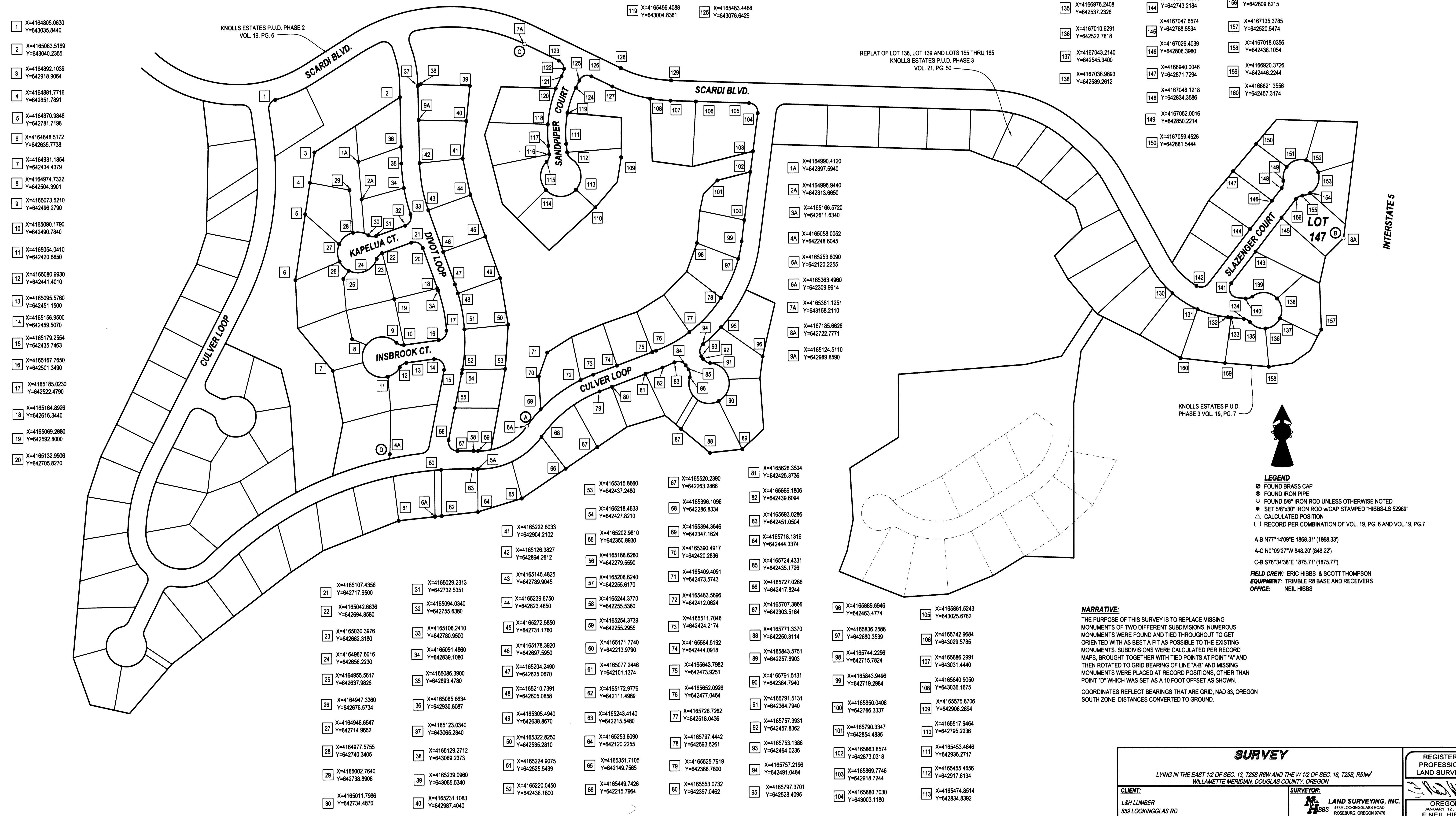


FILED  
Date: 5/1/2008 By: JP  
This survey consists of:  
Map: 1146-74  
Narrative:  
Corner Rpt:  
DOUGLAS COUNTY  
SURVEYOR

- 1 X=4164805.0630  
Y=643035.8440
- 2 X=4165083.5169  
Y=643040.2355
- 3 X=4164892.1039  
Y=642918.9064
- 4 X=4164881.7716  
Y=642851.7891
- 5 X=4164870.9848  
Y=642781.7198
- 6 X=4164848.5172  
Y=642635.7738
- 7 X=4164931.1854  
Y=642434.4379
- 8 X=4164974.7322  
Y=642504.3901
- 9 X=4165073.5210  
Y=642496.2790
- 10 X=4165090.1790  
Y=642490.7840
- 11 X=4165054.0410  
Y=642420.6650
- 12 X=4165080.9930  
Y=642441.4010
- 13 X=4165095.5760  
Y=642451.1500
- 14 X=4165156.9500  
Y=642459.5070
- 15 X=4165179.2554  
Y=642435.7463
- 16 X=4165167.7650  
Y=642501.3490
- 17 X=4165185.0230  
Y=642522.4790
- 18 X=4165164.8926  
Y=642616.3440
- 19 X=4165069.2880  
Y=642592.8000
- 20 X=4165132.9906  
Y=642705.8270

- 114 X=4165407.9037  
Y=642834.0955
- 115 X=4165409.7266  
Y=642896.8529
- 116 X=4165415.6936  
Y=642913.3474
- 117 X=4165413.6926  
Y=642932.0064
- 118 X=4165412.8112  
Y=642979.6319
- 119 X=4165456.4088  
Y=643004.8361
- 120 X=4165430.7031  
Y=643059.1485
- 121 X=4165443.6391  
Y=643086.2286
- 122 X=4165449.4637  
Y=643102.8304
- 123 X=4165437.6011  
Y=643121.1120
- 124 X=4165475.8088  
Y=643060.8979
- 125 X=4165483.4468  
Y=643076.8429
- 126 X=4165510.1708  
Y=643085.9079
- 127 X=4165556.7318  
Y=643063.3209
- 128 X=4165575.7801  
Y=643104.0960
- 129 X=4165587.7789  
Y=643076.4197

- 130 X=4166803.8226  
Y=642601.0534
- 131 X=4166859.6006  
Y=642565.7714
- 132 X=4166927.2990  
Y=642547.9670
- 133 X=4166934.2636  
Y=642547.2734
- 134 X=4166962.7710  
Y=642544.4350
- 135 X=4166976.2408  
Y=642537.2326
- 136 X=4167010.6291  
Y=642522.7818
- 137 X=4167043.2140  
Y=642545.3400
- 138 X=4167036.9893  
Y=642589.2912
- 139 X=4166981.8541  
Y=642593.8206
- 140 X=4166967.2286  
Y=642589.2144
- 141 X=4166934.7866  
Y=642623.2394
- 142 X=4166857.3350  
Y=642617.5784
- 143 X=4166989.3816  
Y=642693.5264
- 144 X=4166977.3296  
Y=642743.2194
- 145 X=4167047.6574  
Y=642768.5534
- 146 X=4167026.4039  
Y=642806.3980
- 147 X=4166940.0046  
Y=642871.7294
- 148 X=4167048.1218  
Y=642834.3586
- 149 X=4167052.0016  
Y=642850.2214
- 150 X=4167059.4526  
Y=642881.5444
- 151 X=4166991.6476  
Y=642932.8284
- 152 X=4167102.7596  
Y=642895.7470
- 153 X=4167129.6096  
Y=642869.0794
- 154 X=4167111.3698  
Y=642822.7792
- 155 X=4167094.1216  
Y=642817.5044
- 156 X=4167079.7118  
Y=642809.8215
- 157 X=4167135.3785  
Y=642520.5474
- 158 X=4167018.0356  
Y=642438.1054
- 159 X=4166920.3726  
Y=642446.2244
- 160 X=4166821.3556  
Y=642457.3174



- 1A X=4164990.4120  
Y=642897.5940
- 2A X=4164996.9440  
Y=642813.6650
- 3A X=4165196.5720  
Y=642611.6340
- 4A X=4165058.0052  
Y=642248.6045
- 5A X=4165253.6090  
Y=642120.2255
- 6A X=4165363.4960  
Y=642309.9914
- 7A X=4165361.1251  
Y=643158.2110
- 8A X=4167185.6626  
Y=642722.7771
- 9A X=4165124.5110  
Y=642989.8590

- 53 X=4165315.8660  
Y=642437.2480
- 54 X=4165218.4633  
Y=642427.8210
- 55 X=4165202.9810  
Y=642350.8930
- 56 X=4165188.6290  
Y=642279.5590
- 57 X=4165145.4825  
Y=642789.9045
- 58 X=4165208.6240  
Y=642255.6170
- 59 X=4165244.3770  
Y=642255.2955
- 60 X=4165171.7740  
Y=642213.9790
- 61 X=4165077.2446  
Y=642101.1374
- 62 X=4165172.9776  
Y=642111.4989
- 63 X=4165243.4140  
Y=642215.5480
- 64 X=4165253.6090  
Y=642255.2955
- 65 X=4165351.7105  
Y=642149.7565
- 66 X=4165448.7426  
Y=642215.7964
- 67 X=4165520.2390  
Y=642263.2866
- 68 X=4165396.1096  
Y=642286.8334
- 69 X=4165394.3646  
Y=642347.1624
- 70 X=4165390.4917  
Y=642420.2836
- 71 X=4165409.4091  
Y=642473.5743
- 72 X=4165483.5696  
Y=642412.0624
- 73 X=4165511.7046  
Y=642424.2174
- 74 X=4165584.5192  
Y=642444.0918
- 75 X=4165643.7962  
Y=642473.9251
- 76 X=4165652.0926  
Y=642477.0464
- 77 X=4165726.7262  
Y=642518.0436
- 78 X=4165797.4442  
Y=642593.5261
- 79 X=4165525.7919  
Y=642386.7800
- 80 X=4165553.0732  
Y=642397.0462
- 81 X=4165628.3504  
Y=642425.3736
- 82 X=4165666.1806  
Y=642439.6094
- 83 X=4165693.0286  
Y=642451.0504
- 84 X=4165718.1316  
Y=642444.3374
- 85 X=4165724.4331  
Y=642435.1726
- 86 X=4165727.0266  
Y=642417.8244
- 87 X=4165707.3866  
Y=642303.5164
- 88 X=4165771.3370  
Y=642250.3114
- 89 X=4165843.5751  
Y=642257.6903
- 90 X=4165791.5131  
Y=642364.7940
- 91 X=4165791.5131  
Y=642364.7940
- 92 X=4165757.3931  
Y=642457.8362
- 93 X=4165753.1386  
Y=642464.0236
- 94 X=4165757.2196  
Y=642491.0484
- 95 X=4165797.3701  
Y=642528.4095
- 96 X=4165689.6946  
Y=642463.4774
- 97 X=4165836.2588  
Y=642680.3539
- 98 X=4165744.2296  
Y=642715.7824
- 99 X=4165843.9496  
Y=642719.2984
- 100 X=4165850.0408  
Y=642766.3337
- 101 X=4165790.3347  
Y=642854.4835
- 102 X=4165863.8574  
Y=642873.0318
- 103 X=4165869.7746  
Y=642918.7244
- 104 X=4165880.7030  
Y=643003.1180
- 105 X=4165861.5243  
Y=643025.8782
- 106 X=4165742.9684  
Y=643029.5785
- 107 X=4165686.2991  
Y=643031.4440
- 108 X=4165640.9050  
Y=643036.1675
- 109 X=4165575.8706  
Y=642906.2894
- 110 X=4165517.9464  
Y=642795.2236
- 111 X=4165453.4646  
Y=642936.2717
- 112 X=4165455.4656  
Y=642917.6134
- 113 X=4165474.8514  
Y=642834.8392

**LEGEND**  
 ● FOUND BRASS CAP  
 ○ FOUND IRON PIPE  
 ○ FOUND 5/8" IRON ROD UNLESS OTHERWISE NOTED  
 ○ SET 5/8"x30" IRON ROD w/CAP STAMPED "HIBBS-LS 52989"  
 △ CALCULATED POSITION  
 ( ) RECORD PER COMBINATION OF VOL. 19, PG. 6 AND VOL. 19, PG. 7

A-B N77°14'09"E 1868.31' (1868.33)  
 A-C N0°09'27"W 848.20' (848.22)  
 C-B S76°34'38"E 1875.71' (1875.77)

**FIELD CREW:** ERIC HIBBS & SCOTT THOMPSON  
**EQUIPMENT:** TRIMBLE RB BASE AND RECEIVERS  
**OFFICE:** NEIL HIBBS

**NARRATIVE:**  
 THE PURPOSE OF THIS SURVEY IS TO REPLACE MISSING MONUMENTS OF TWO DIFFERENT SUBDIVISIONS. NUMEROUS MONUMENTS WERE FOUND AND TIED THROUGHOUT TO GET ORIENTED WITH AS BEST A FIT AS POSSIBLE TO THE EXISTING MONUMENTS. SUBDIVISIONS WERE CALCULATED PER RECORD MAPS, BROUGHT TOGETHER WITH TIED POINTS AT POINT "A" AND THEN ROTATED TO GRID BEARING OF LINE "A-B" AND MISSING MONUMENTS WERE PLACED AT RECORD POSITIONS, OTHER THAN POINT "D" WHICH WAS SET AS A 10 FOOT OFFSET AS SHOWN. COORDINATES REFLECT BEARINGS THAT ARE GRID, NAD 83, OREGON SOUTH ZONE. DISTANCES CONVERTED TO GROUND.

<b>SURVEY</b>		REGISTERED PROFESSIONAL LAND SURVEYOR
LYING IN THE EAST 1/2 OF SEC. 13, T25S R6W AND THE W 1/2 OF SEC. 18, T25S, R6W WILLAMETTE MERIDIAN, DOUGLAS COUNTY, OREGON		
<b>CLIENT:</b> L&H LUMBER 889 LOOKINGGLASS RD. ROSEBURG, OREGON 97470	<b>SURVEYOR:</b> NEIL HIBBS LAND SURVEYING, INC. 4739 LOOKINGGLASS ROAD ROSEBURG, OREGON 97470 PHONE (541) 957-8933 FAX (541) 957-8306 email: neilhibbs@willblus.com	 OREGON JANUARY 12, 1999 F. NEIL HIBBS 52989 EXPIRATION DATE 8/30/2008
<b>DWG. SCALE:</b> 1" = 100'	<b>JOB #:</b> 0087-05	<b>DATE:</b> APRIL 2008
		<b>PAGE:</b> 1 OF 1