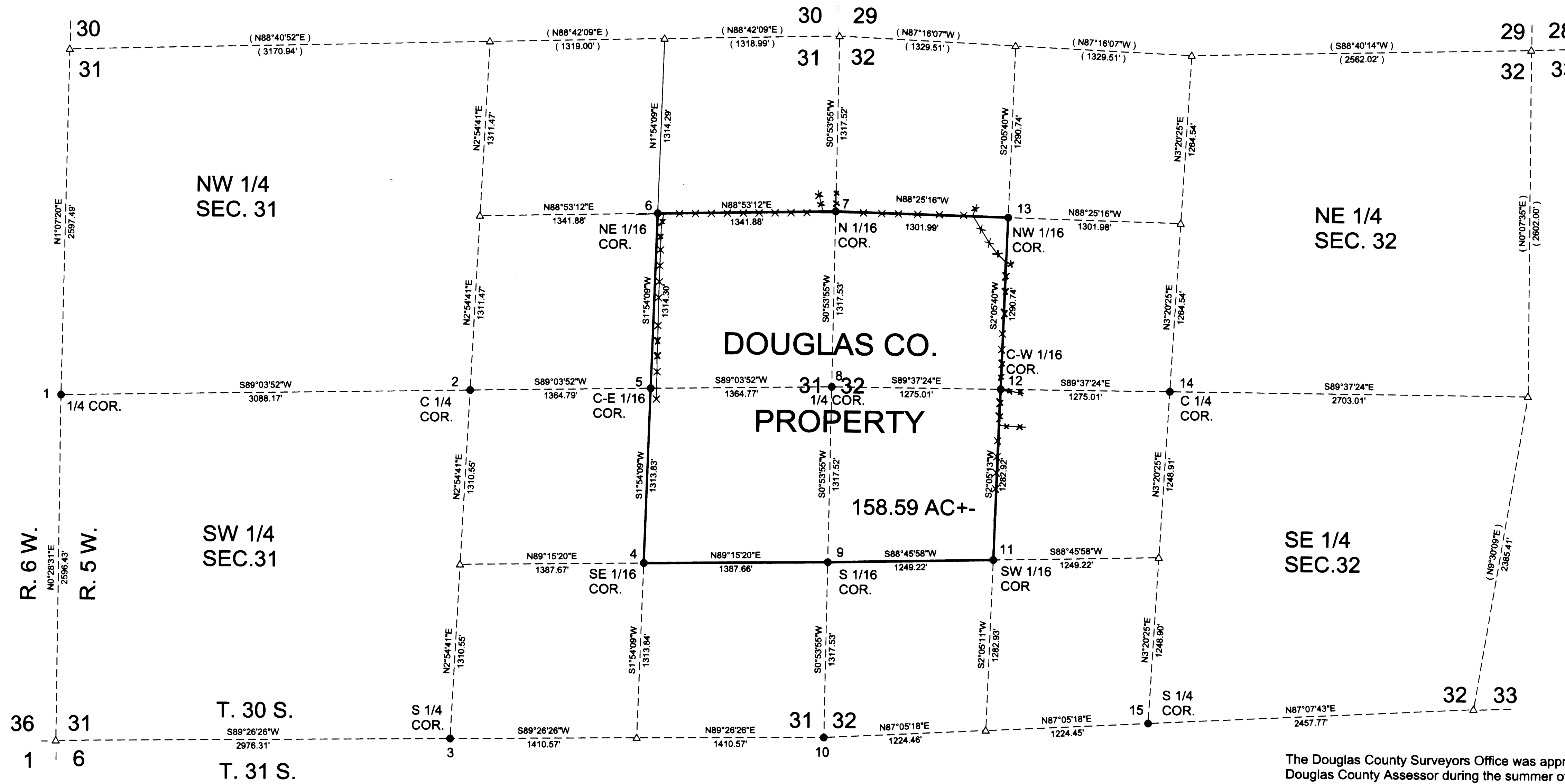


SURVEY FOR DOUGLAS COUNTY LAND DEPARTMENT IN SECTIONS 31 AND 32, T.30 S. R.5 W. W.M. BY: DOUGLAS COUNTY SURVEYORS OFFICE JANUARY 2007

FILED
Date: 2/27/2007 By: KLS
This survey consists of:
Map: M146-53
Narrative:
Corner Rpt: CS 67/20 A-E
DOUGLAS COUNTY
SURVEYOR

BASIS OF BEARING RM3-26

SCALE 1" = 500 FT.



CORNER INFORMATION

- 1 RM3-26 CORNER BEARS N 36°34'44" E 25.08 ft. SEE DCSO CORNER RENEWAL PI# 100140
- 2 RM3-26 CORNER BEARS N 69°51'07" W 103.39 FT. SEE DCSO CORNER RENEWAL PI# 140140
- 3 RM3-26 CORNER BEARS N75°28'29"W 198.64 FT. 1" IRON PIPE BEARS N81°54'45"E 199.72 FT. SEE DCSO CORNER RENEWAL PI# 140100
- 4 RM3-26 CORNER BEARS N74°50'26"W 222.30 FT. SEE DCSO CORNER RENEWAL PI#160120
- 5 RM3-26 CORNER BEARS N73°30'57"W 149.22 FT. SEE DCSO CORNER RENEWAL PI#160140
- 6 RM3-26 CORNER BEARS N73°31'09"W 75.19 FT. 2 IN. IRON PIPE BEARS N72°58'17"E 24.26 FT. SEE DCSO CORNER RENEWAL PI#160160
- 7 RM3-26 CORNER BEARS N75°29'08"W 98.17 FT. 2 IN. IRON PIPE BEARS S08°30'24"W 9.11 FT. SEE DCSO CORNER RENEWAL PI#200160
- 8 RM3-26 CORNER BEARS N75°30'28"W 195.28 FT. SEE DCSO CORNER RENEWAL PI#200140
- 9 RM3-26 CORNER BEARS N75°00'27"W 293.50 FT. SEE DCSO CORNER RENEWAL PI#200120
- 10 RM3-26 CORNER BEARS N75°29'08"W 389.49 FT. SEE DCSO CORNER RENEWAL PI#200100
- 11 RM3-26 CORNER BEARS N75°39'50"W 217.32 FT. SEE DCSO CORNER RENEWAL PI#220120
- 12 RM3-26 CALCULATED CORNER BEARS N75°14'38"W 145.70 FT. SEE DCSO CORNER RENEWAL PI#220140
- 13 RM3-26 CALCULATED CORNER BEARS N75°22'34" W 73.30 FT. AXLE BEARS N61°22'24"E 22.39 FT. SEE DCSO CORNER RENEWAL PI#220160
- 14 RM3-26 CORNER BEARS N74°49'08"W 95.53 FT. 3/4 IN. IRON ROD BEARS S23°40'25"E 3.42 FT. SEE DCSO CORNER RENEWAL PI#240140
- 15 RM3-26 CORNER BEARS N 75°22'45" W, 190.22 FT. SEE DCSO CORNER RENEWAL PI# 240100

SEE CS FILE NUMBER CS 67/20 FOR DETAILED SKETCHES OF FENCE LINES AND MONUMENTS FOUND AROUND CORNERS 5,6,7,12 AND 13.

NARRATIVE

The Douglas County Surveyors Office was approached by Ken Hendrick of the Douglas County Land Department and Ron Northcraft Douglas County Assessor during the summer of 2006 to investigate boundary line problems created by survey (RM 3-26) filed in 1979 by Douglas County Surveyor Francis L. Ingram. Deputy County Surveyor Randall W. Smith was directed by the County Surveyor Romey Ware to do an extensive record search. Three corners used to control RM3-26 are disputable. The 1/4 corner between sections 31 and 32 was first renewed in 1946 by George Wenderoth from two old bearing trees (PI#100140). The section corner for sections 31 and 32 only was renewed in 1946 by George Wenderoth from one old bearing tree stump (PI#200100). These 1946 corner positions are accepted by this survey over the 1979 proportioned positions as the best evidence of the original corners. The 1/4 corner between sections 1 and 36 was renewed from an old decayed bearing tree by Frank Caine in 1921. RM3-26 set this corner by proportioning. 1981 BLM rejects the RM3-26 corner in favor of the renewed 1921 corner position. This last corner does not affect this survey but was brought up to illustrate that RM3-26 shows a tendency to disregard long standing corners of record in favor of mathematical proportioning.

This survey used a combination of information attained from RM3-26 and pertinent 1979 field notes on file in the Douglas County Surveyors Office, along with recent survey ties made by this office. Corner positions were determined by section breakdown as established in the 1973 Manual of Surveying Instruction.

It is recommended that owners of property who have lines of occupation that are different than the results of this survey or RM3-26, prepare agreements with their respective neighbors and file the appropriate deed with the County Clerk.

Field : John Pike and Stephen Flause
Office: Randall Smith

REGISTERED
PROFESSIONAL
LAND SURVEYOR
Randall W. Smith
OREGON
RANDALL W. SMITH
JULY 23, 1990
2469
EXPIRES: 6-30-2008

LEGEND	
△	CALCULATED POINT
●	SET 2 1/2" BRASS CAP ON A 1 1/2" X32" LONG IRON PIPE OR AS NOTED
()	RECORD PER RM3-26
⊕⊕⊕⊕	FENCE LINE