

# RECORD OF SURVEY

LOCATED IN  
SECTION 10, T31S, R6W, W.M.  
DOUGLAS COUNTY, OREGON

FILED  
Date: 5-27-2004 By: JLV  
This survey consists of:  
Map: M 146-5  
Narrative:  
Corner Rpt:  
DOUGLAS COUNTY  
SURVEYOR

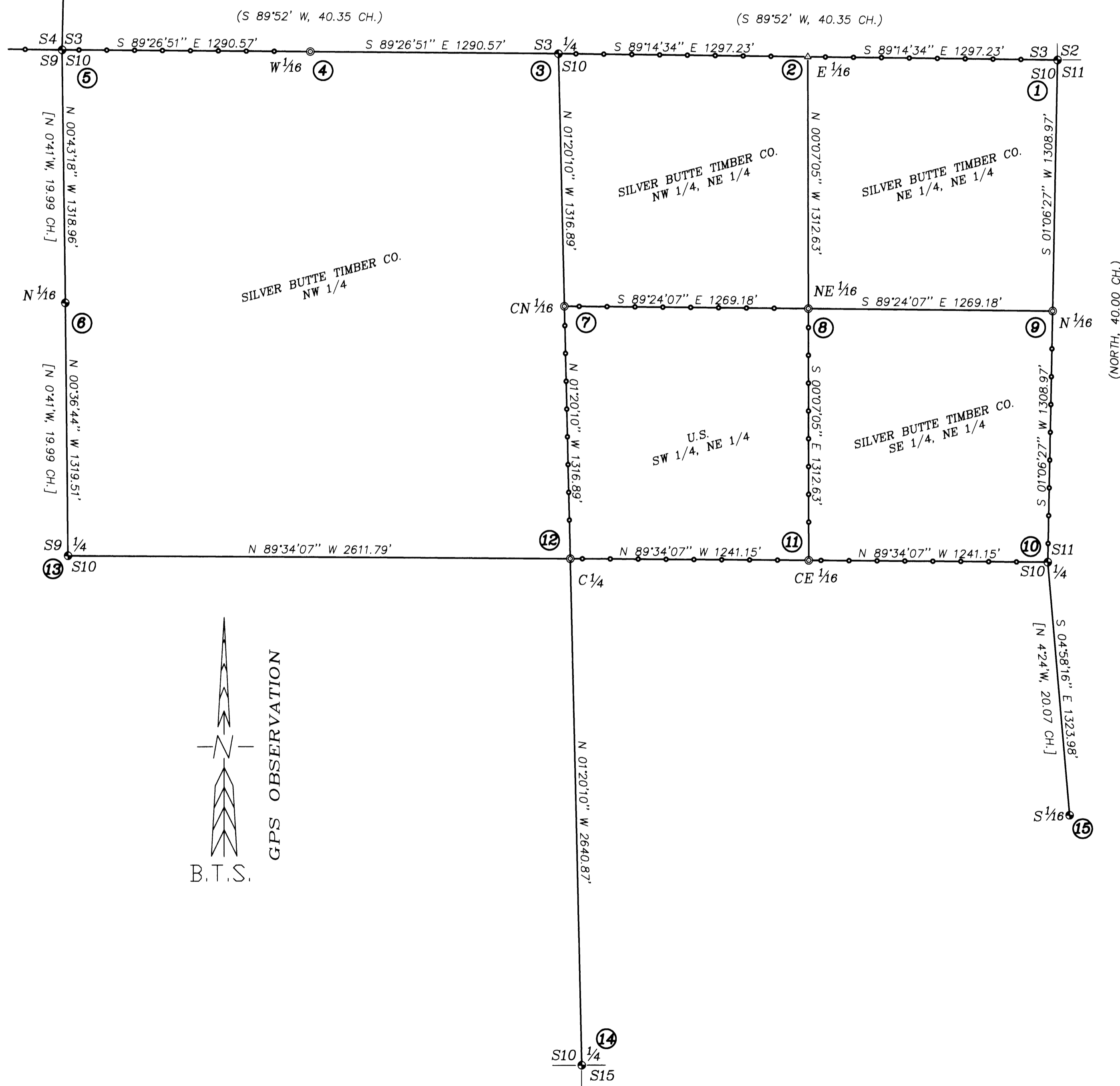
### NARRATIVE:

THE PURPOSE OF THIS SURVEY WAS TO SUBDIVIDE SECTION 10, T31S, R6W, W.M. SO AS TO MONUMENT THE CORNERS AND POST SELECTED BOUNDARY LINES OF SILVER BUTTE TIMBER CO. LANDS IN THE NORTH 1/2 OF SECTION 10. A GPS CONTROL SURVEY WAS COMPLETED BASED ON A NGS OPUS SOLUTION ON A PROJECT CONTROL POINT. RANDOM LINE TRAVERSE LOOPS WERE SURVEYED BETWEEN THE CONTROLLING CORNERS, GPS POINTS AND ALONG THE BOUNDARY LINES POSTED. THE NORTHWEST CORNER, NORTH 1/4 CORNER, NORTHEAST CORNER AND EAST 1/4 CORNER OF SECTION 10 WERE FOUND AS RESTORED IN THEIR ORIGINAL POSITIONS. THE SOUTH 1/4 CORNER AND WEST 1/4 CORNER OF SECTION 10 WERE FOUND AS RESTORED BY PROPORTIONATE MEASUREMENT UNDER A 1980 USBLM DEPENDENT RESURVEY. USING THESE CORNER POSITIONS, SECTION 10 WAS SUBDIVIDED AS PER THE MANUAL OF SURVEYING INSTRUCTIONS, 1973 AND THE LAWS OF THE STATE OF OREGON AND THE W 1/16 S3/S10, N 1/16 S10/S11, C 1/4, CN 1/16, NE 1/16 & CE 1/16 WERE MONUMENTED BY THIS SURVEY.  
THIS SURVEY WAS PERFORMED BY LES FANNING, MICKEY CALVERT AND MATT DIXON USING LEICA SR299 GPS RECEIVER AND A NIKON DMT 531 TOTAL STATION WITH COMPUTATIONS BY KRIS DEGROOT AND DRAFTING BY BILL WARREN.

REGISTERED  
PROFESSIONAL  
LAND SURVEYOR  
*Kristian O. Degroot*  
OREGON  
JULY 17, 1981  
KRISTIAN O. DEGROOT  
1941  
RENEWAL DATE: 12-31-05

### CORNER DESCRIPTIONS:

ALL NEW BEARING TREES HAVE DOUBLE BLAZED FACES WITH A BRASS WASHER STAMPED "PLS 1941" NAILED INTO THE LOWER BLAZE. BEARINGS ARE TAKEN TO THE CENTER OF THE TREE AT THE ROOT CROWN AND DISTANCES ARE MEASURED TO A NAIL IN THE ROOT CROWN AT THE SIDE AND CENTER OF THE TREE. BEARING TREES WERE MEASURED WITH A TOTAL STATION. ALL BEARING TREES HAVE A 6" RED BAND PAINTED AROUND THE TREE AND THE BLAZED FACE PAINTED RED AND BEARING TREE SIGNS NAILED TO THE TREE. ALL NEW 5/8" X 30" IRON ROD REFERENCE MONUMENTS HAVE A PLASTIC CAP STAMPED "BTS ENG-SURV".



① **S2/S3/S10/S11**  
FOUND 1966 DCSO BCIP AND ACCESSORIES PER PLSS ID. NO. 500600

② **E 1/16 S3/S10**  
COMPUTED POINT:  
A 3/4" IRON PIPE NOT OF RECORD BEARS S.71°06'17"E, 8.69 FT.

③ **1/4 S3/S10**  
FOUND A 1 1/4" IRON PIPE BY JOHN POWELL, DOUGLAS COUNTY SURVEYOR'S OFFICE IN 1966, FIRMLY SET, PROJECTING 12" ABOVE THE GROUND WITH A 2 1/2" BRASS CAP STAMPED:

COUNTY SURVEYOR'S OFFICE  
T31S R6W  
S3  
1/4 S10  
1966

FROM WHICH A BEARING TREE BY WENDEROTH IN 1960:  
A 10" YEW BEARS N.55°45'E, 36.5 FT. WITH NO MARKS VISIBLE ON AN OPEN ROTTED BLAZE.  
AND A BEARING TREE BY POWELL IN 1966:  
A 32" D. FIR BEARS N.82°45'E, 63.6 FT. WITH A HEALED BLAZE  
AND A BEARING TREE BY SEIBOLD IN 1998:  
A ROTHOLE BEARS S.32°30'W, 34.3 FT. WITH AN UPROOTED 10" D.FIR WITH A HEALED BLAZE ALONGSIDE.  
AND A NEW BEARING TREE  
A 14" ALDER BEARS S.32°00'E, 30.2 FT. SCRIBED "1/4 S10 BT".  
AND NEW REFERENCE MONUMENTS:  
A 5/8" X 30" IRON ROD BEARS S.82°45'W, 30.00 FT.  
A 5/8" X 30" IRON ROD BEARS N.31°45'W, 20.00 FT.

④ **W 1/16 S3/S10**  
SET: A 5/8" X 30" IRON ROD 28" IN GROUND WITH A 2" ALUMINUM CAP STAMPED:

T31S R6W  
S3  
W 1/16 S10  
2004  
PLS 1941

FROM WHICH NEW BEARING TREES:  
A 5" D. FIR BEARS S.71°45'W, 12.7 FT. SCRIBED "W 1/16 S10 BT".  
A 7" D. FIR BEARS N.05°00'W, 24.5 FT. SCRIBED "W 1/16 S3 BT".

⑤ **S3/S4/S9/S10**  
FOUND ORIGINAL CORNER TREE AND 1980 DCSO BCIP WITNESS CORNER AND ACCESSORIES PER PLSS ID. NO. 400600 AND M 137-77.

⑥ **N 1/16 S9/S10**  
FOUND USBLM BCIP PER 1980 DEPENDENT RESURVEY.

⑦ **CN 1/16 S10**  
SET: A 5/8" X 30" IRON ROD 28" IN GROUND WITH A 2" ALUMINUM CAP STAMPED:

T31S R6W  
C  
N 1/16 S10  
C  
2004  
PLS 1941

FROM WHICH NEW BEARING TREES:  
A 6" D. FIR BEARS N.80°30'E, 16.1 FT. SCRIBED "CN 1/16 S10 BT".  
A 10" PINE BEARS S.34°30'E, 12.2 FT. SCRIBED "CN 1/16 S10 BT".

⑧ **NE 1/16 S10**  
SET: A 5/8" X 30" IRON ROD 28" IN GROUND WITH A 2" ALUMINUM CAP STAMPED:

T31S R6W  
NE 1/16 S10  
2004  
PLS 1941

FROM WHICH NEW BEARING TREES:  
A 14" D. FIR BEARS N.39°15'W, 10.2 FT. SCRIBED "NE 1/16 S10 BT"  
A 6" D. FIR BEARS S.74°30'W, 13.8 FT. SCRIBED "NE 1/16 S10 BT"

⑨ **N 1/16 S10/S11**  
SET: A 5/8" X 30" IRON ROD 28" IN GROUND WITH A 2" ALUMINUM CAP STAMPED:  
T31S R6W  
N 1/16  
S10 S11  
2004  
PLS 1941

FROM WHICH NEW BEARING TREES:  
A 8" D. FIR BEARS N.30°45'W, 9.8 FT. SCRIBED "N 1/16 S10 BT"  
A 13" D. FIR BEARS N.74°30'E, 12.4 FT. SCRIBED "N 1/16 S11 BT"

⑩ **1/4 S10/S11**  
FOUND 1966 DCSO BCIP AND ACCESSORIES PER PLSS ID. NO. 500540

⑪ **CE 1/16 S10**  
SET: A 5/8" X 30" IRON ROD 28" IN GROUND WITH A 2" ALUMINUM CAP STAMPED:  
T31S R6W  
E 1/16  
C S10  
2004  
PLS 1941

FROM WHICH NEW BEARING TREES:  
A 8" D. FIR BEARS N.29°00'W, 29.5 FT. SCRIBED "CE 1/16 S10 BT".  
A 14" D. FIR BEARS N.56°45'E, 15.9 FT. SCRIBED "CE 1/16 S10 BT".

⑫ **C 1/4 S10**  
SET: A 5/8" X 30" IRON ROD 28" IN GROUND WITH A 2" ALUMINUM CAP STAMPED:

T31S R6W  
C 1/4 S10  
2004  
PLS 1941

FROM WHICH NEW BEARING TREES:  
A 11" D. FIR BEARS N.14°15'E, 42.3 FT. SCRIBED "C 1/4 S10 BT".  
A 6" D. FIR BEARS N.64°45'E, 11.2 FT. SCRIBED "C 1/4 S10 BT".  
AND NEW REFERENCE MONUMENTS:  
A 5/8" X 30" IRON ROD BEARS S.14°13'36"W, 14.93 FT.  
A 5/8" X 30" IRON ROD BEARS S.85°18'04"E, 15.09 FT.

⑬ **1/4 S9/S10**  
FOUND 1980 USBLM BCIP AND ACCESSORIES PER PLSS ID. NO. 400540

⑭ **1/4 S10/S15**  
FOUND 1980 USBLM BCIP AND ACCESSORIES PER PLSS ID. NO. 440500

⑮ **S 1/16 S10/S11**  
FOUND USBLM BCIP AND ACCESSORIES PER 1980 DEPENDENT RESURVEY

### LEGEND:

- ⊙ = SET 5/8" X 30" IRON ROD W/ 2" ALUMINUM CAP AS NOTED.
- = FOUND PLSS MONUMENT AS NOTED
- △ = COMPUTED POINT
- ( ) = RECORD PER 1882 USGLO SURVEY
- [ ] = RECORD PER 1980 USBLM DEPENDENT RESURVEY

— — — — — = PROPERTY LINES BLAZED, PAINTED & POSTED WITH 6" STEEL POSTS.

**BTS ENGINEERING & SURVEYING, INC.**  
431 S.E. MAIN ST., ROSEBURG, OR 97470  
PHONE (541) 673-0966 FAX (541) 673-0105

SCALE: 1" = 400'  
DATE: MAY 25, 2004

FOR: SILVER BUTTE TIMBER CO.  
P.O. BOX 4  
RIDDLE, OR 97469

JOB #: 03-111  
FILE: 31-06-10.DWG  
SHEET 1 OF 1