

RECORD OF SURVEY

LOCATED IN
SECTION 6, T.27S., R.3W., W.M.
DOUGLAS COUNTY, OREGON

FILED
Date: 8-29-2005 By: JC
This survey consists of:
Map: M146-27
Name: _____
Corner type: _____
DOUGLAS COUNTY
SURVEYOR

NARRATIVE:

THE PURPOSE OF THIS SURVEY WAS TO MONUMENT THE CE 1/16 CORNER OF SECTION 6 AND POST THE NORTH-SOUTH CENTERLINE OF THE SE 1/4 OF SECTION 6. THIS SURVEY IS BASED ON AND AN EXTENSION OF THE GPS AND PROJECT CONTROL ESTABLISHED UNDER PREVIOUS BTS SURVEYS: PARTITION PLATS 2001-0060, 2002-0034 AND 2003-0018. NEW GPS POINTS WERE OBSERVED AND RANDOM LINE TRAVERSES AND RTK SURVEY TIES WERE SURVEYED TO NEW CONTROLLING CORNERS. THE PROJECT CONTROL WAS THEN READJUSTED WITH A NEW COMBINED GRID SCALE FACTOR AND GRID CONVERGENCE ANGLE SO THE PARTITION PLAT 2003-0018 COURSES ALONG THE WEST AND NORTH LINES OF SECTION 6 ARE SLIGHTLY CHANGED. THE SW CORNER, NW CORNER, N 1/4 CORNER AND THE W 1/4 CORNER WERE TIED UNDER PREVIOUS SURVEYS AND WERE NOT REOBSERVED UNDER THIS SURVEY. THE E 1/4 CORNER WAS FOUND AS ESTABLISHED BY PROPORTIONATE MEASUREMENT UNDER M 138-18. THE E 1/16 CORNER OF SECTIONS 6 AND 7 WAS FOUND AS ESTABLISHED UNDER A 1958 USBLM DEPENDENT RESURVEY. THE CENTER 1/4 CORNER WAS FOUND AND ACCEPTED AS ESTABLISHED BY IRVING IN 1922 PER VOL.3, PG.139A. THE CE 1/16 CORNER WAS THEN SET AT PROPORTIONATE DISTANCE BETWEEN THE C 1/4 CORNER AND THE E 1/4 CORNER AND THE NORTH-SOUTH CENTERLINE OF THE SE 1/4 WAS SURVEYED AND POSTED AS SHOWN ON THE FACE OF THE MAP.

THIS SURVEY WAS PERFORMED BY LES FANNING, ADAM DEGROOT AND JERED CARPENTER USING A LEICA SYSTEM 1200 GPS AND TOTAL STATION WITH COMPUTATIONS BY KRIS DEGROOT AND DRAFTING BY BILL WARREN.



CORNER DESCRIPTIONS:

ALL NEW BEARING TREES HAVE DOUBLE BLAZED FACES WITH A BRASS WASHER STAMPED "PLS 1941" NAILED INTO THE LOWER BLAZE. BEARINGS ARE TAKEN TO THE CENTER OF THE TREE AT THE ROOT CROWN AND DISTANCES ARE MEASURED TO A NAIL IN THE ROOT CROWN AT THE SIDE AND CENTER OF THE TREE. ALL BEARING TREES HAVE A 6" RED BAND PAINTED AROUND THE TREE AND THE BLAZED FACE PAINTED RED AND BEARING TREE SIGNS NAILED TO THE TREE.

CE 1/16 S6

① SET A 5/8" X 30" IRON ROD 28" IN GROUND, WITH A 2 1/2" ALUMINUM CAP STAMPED:

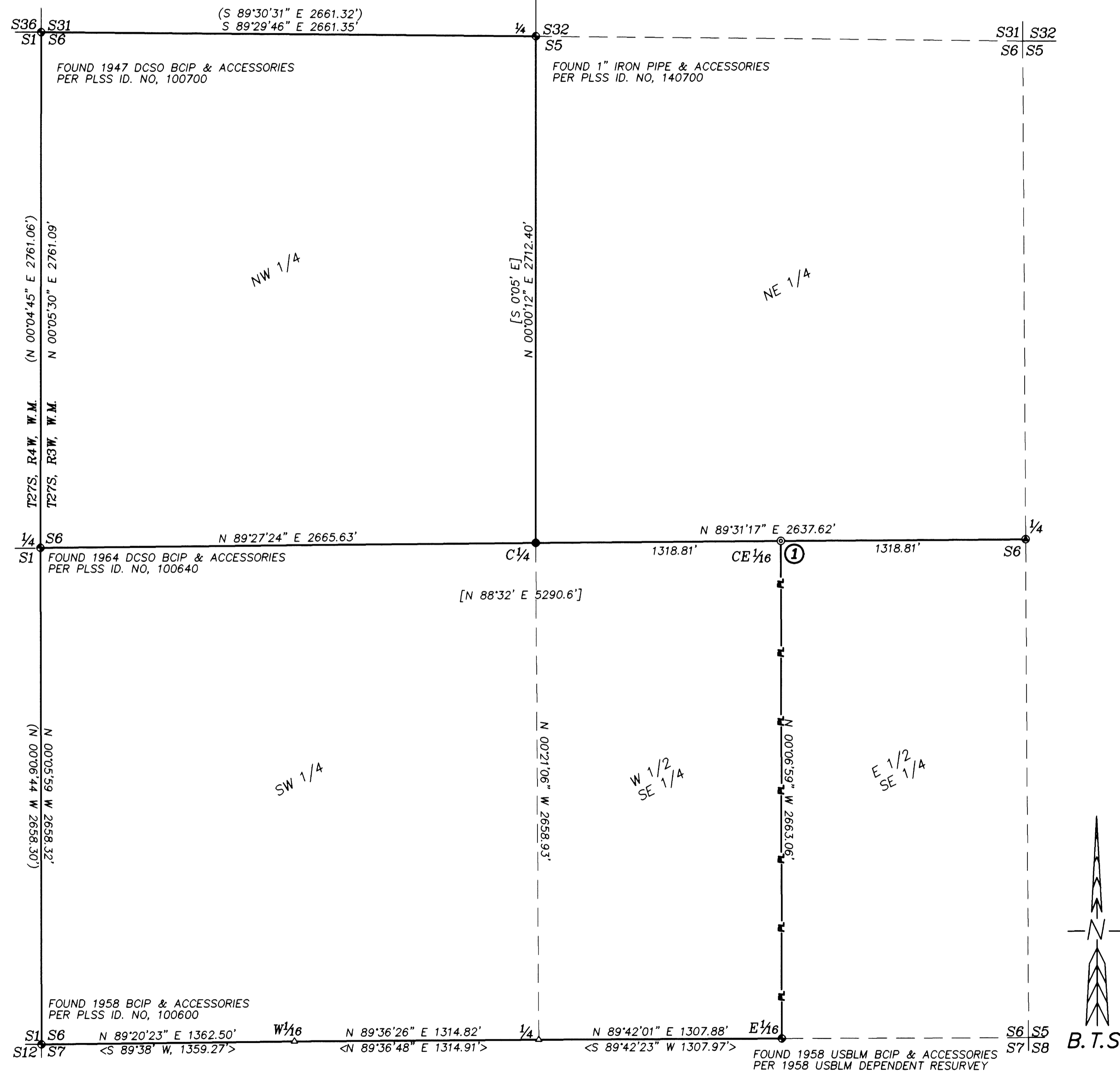
T27S R3W
C E 1/16 C
S6
2005
PLS 1941

FROM WHICH NEW BEARING TREES:

- 5" D. FIR BEARS N.26°30'W., 10.0 FT. SCRIBED "CE 1/16 S6 BT".
- 5" D. FIR BEARS S.71°30'W., 20.0 FT. SCRIBED "CE 1/16 S6 BT".

LEGEND:

- ⊙ = SET 5/8" x 30" IRON ROD w/ALUM. CAP MK'D. AS NOTED IN CORNER DESCRIPTIONS
- = FOUND 1" IRON PIPE PER VOL. 3, PAGE 139A
- ⊙ = FOUND 5/8" IRON ROD PER M 138-18
- △ = COMPUTED POINT PER 2001 USBLM DEPENDENT RESURVEY
- ⊙ = FOUND MONUMENT AS NOTED.
- = POSTED, BLAZED AND PAINTED LINES.
- () = RECORD PER 2003-0018
- [] = RECORD PER VOL 3, PAGE 139A
- < > = RECORD PER 1958 OR 2001 USBLM DEPENDENT RESURVEY



BTS ENGINEERING & SURVEYING, INC.
431 S.E. MAIN ST., ROSEBURG, OR 97470
PHONE (541) 673-0966 FAX (541) 673-0105

SCALE: 1" = 400'	FOR: ROSEBURG RESOURCES CO. P.O. BOX 1088 ROSEBURG, OR 97470	JOB #: 05-008 FILE: BUCKHORN.DWG SHEET 1 OF 1
DATE: AUGUST 24, 2005		