

FILED
Date: 7-8-2005 By: K
This survey consists of:
Map: M146-23
Corner Rpt:
DOUGLAS COUNTY
SURVEYOR

CORNER DESCRIPTIONS:

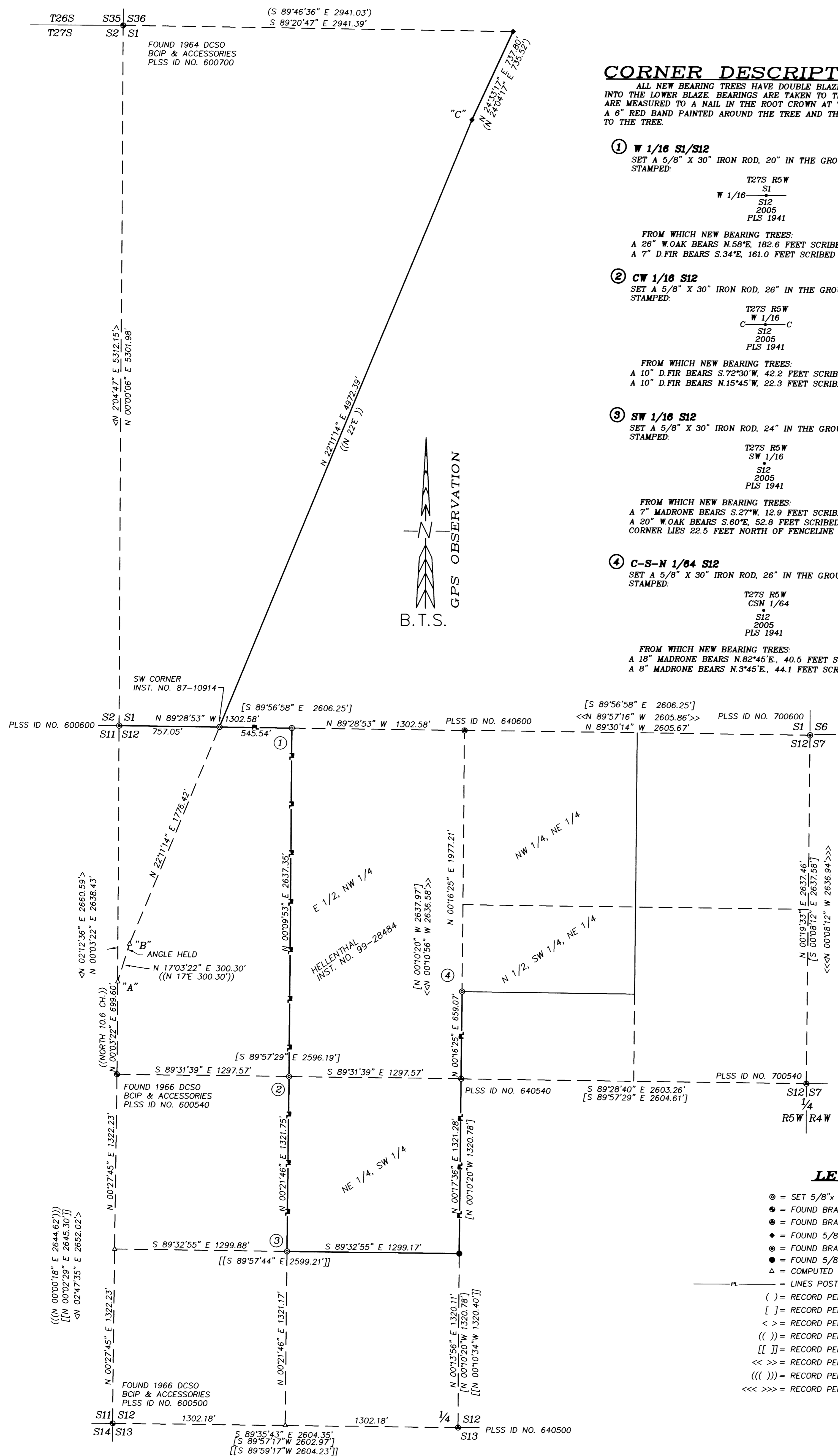
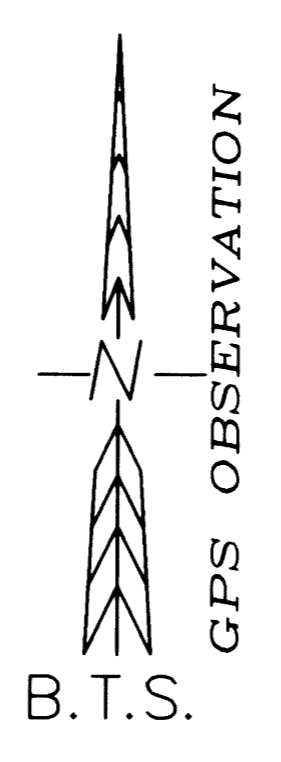
ALL NEW BEARING TREES HAVE DOUBLE BLAZED FACES WITH A BRASS WASHER STAMPED "PLS 1941" NAILED INTO THE LOWER BLAZE. BEARINGS ARE TAKEN TO THE CENTER OF THE TREE AT THE ROOT CROWN AND DISTANCES ARE MEASURED TO A NAIL IN THE ROOT CROWN AT THE SIDE AND CENTER OF THE TREE. ALL BEARING TREES HAVE A 6" RED BAND PAINTED AROUND THE TREE AND THE BLAZED FACE PAINTED RED AND BEARING TREE SIGNS NAILED TO THE TREE.

① **W 1/16 S1/S12**
SET A 5/8" X 30" IRON ROD, 20" IN THE GROUND WITH A 2" ALUMINUM CAP STAMPED:
T27S R5W
S1
W 1/16 S12
2005
PLS 1941
FROM WHICH NEW BEARING TREES:
A 26" W.OAK BEARS N.58°E, 182.6 FEET SCRIBED "W 1/16 S1 BT"
A 7" D.FIR BEARS S.34°E, 161.0 FEET SCRIBED "W 1/16 S12 BT"

② **CW 1/16 S12**
SET A 5/8" X 30" IRON ROD, 26" IN THE GROUND WITH A 2" ALUMINUM CAP STAMPED:
T27S R5W
W 1/16 C
S12
2005
PLS 1941
FROM WHICH NEW BEARING TREES:
A 10" D.FIR BEARS S.72°30'W, 42.2 FEET SCRIBED "CW 1/16 S12 BT"
A 10" D.FIR BEARS N.15°45'W, 22.3 FEET SCRIBED "CW 1/16 S12 BT"

③ **SW 1/16 S12**
SET A 5/8" X 30" IRON ROD, 24" IN THE GROUND WITH A 2" ALUMINUM CAP STAMPED:
T27S R5W
SW 1/16
S12
2005
PLS 1941
FROM WHICH NEW BEARING TREES:
A 7" MADRONE BEARS S.27°W, 12.9 FEET SCRIBED "SW 1/16 S12 BT"
A 20" W.OAK BEARS S.60°E, 52.8 FEET SCRIBED "SW 1/16 S12 BT"
CORNER LIES 22.5 FEET NORTH OF FENCELINE RUNNING E-W

④ **C-S-N 1/64 S12**
SET A 5/8" X 30" IRON ROD, 26" IN THE GROUND WITH A 2" ALUMINUM CAP STAMPED:
T27S R5W
CSN 1/64
S12
2005
PLS 1941
FROM WHICH NEW BEARING TREES:
A 18" MADRONE BEARS N.82°45'E, 40.5 FEET SCRIBED "CSN 1/64 S12 BT"
A 8" MADRONE BEARS N.3°45'E, 44.1 FEET SCRIBED "CSN 1/64 S12 BT"



LEGEND:

- ⊙ = SET 5/8"x 30" IRON ROD W/PLASTIC CAP "BTS ENG-SURV"
- = FOUND BRASS CAPPED IRON PIPES AS NOTED
- = FOUND BRASS CAPPED IRON PIPES PER M 41-7
- = FOUND 5/8" IRON ROD PER M 70-67
- = FOUND BRASS CAPPED IRON PIPES PER M 35-54
- = FOUND 5/8" IRON ROD PER 41-7
- △ = COMPUTED POINT.
- PL — = LINES POSTED WITH 5 1/2" STEEL POST
- () = RECORD PER M 70-67
- [] = RECORD PER M 41-7
- < > = RECORD PER M 35-54
- (()) = RECORD PER VOL.236, PG.107
- [[]] = RECORD PER M 44-72
- << >> = RECORD PER M 95-73
- (((()))) = RECORD PER 2001-0047
- <<< >>> = RECORD PER M 73-57

NARRATIVE:

THE PURPOSE OF THIS SURVEY WAS TO SUBDIVIDE THE WEST 1/2 OF SECTION 12, T27S, R5W AND MONUMENT THE W 1/16, S1/S12, CW 1/16 AND C-S-N 1/64 CORNERS OF SECTION 12 AND POST LINES OF THE HELLENTHAL PROPERTY AS DESCRIBED IN INST. NO. 99-28484 AND ALSO TO MONUMENT THE SW CORNER OF THE HELLENTHAL PROPERTY DESCRIBED IN INST. NO. 87-10914. THE SURVEY IS CONTROLLED BY W 1/4 AND SW CORNERS OF SECTION 12 AND THE NW CORNER OF SECTION 1 WHICH WERE FOUND AS RESTORED IN THEIR ORIGINAL POSITIONS AND ALSO BY THE NE CORNER AND NW CORNERS OF SECTION 12 AS SET PER M 35-54 AND ALSO BY THE E 1/4 N 1/4, C 1/4, S 1/4 AND CS 1/16 CORNER OF SECTION 12 WHICH WERE SET PER M 41-7. THE M 52-47 MONUMENT AT THE S 1/16 CORNER OF SECTION 11 AND 12 WAS MISSING, BEING DESTROYED BY A LANDSLIDE. A GPS CONTROL SURVEY WAS COMPLETED AND RANDOM TRAVERSE LOOPS OR GPS RTK TIES WERE SURVEYED BETWEEN CONTROLLING CORNERS AND ALONG THE LINES POSTED.
THE SUBDIVISION OF THE WEST 1/2 OF SECTION 12 WAS THEN COMPUTED HOLDING THE ABOVE LISTED MONUMENTS AND CORNERS WERE SET AND BOUNDARY LINES WERE POSTED. THE SW CORNER OF INST. NO. 87-10914 WAS COMPUTED AT THE INTERSECTION OF THE WEST LINE OF VOL. 236, PG. 107 AND THE NORTH LINE OF SECTION 12. THE WEST LINE OF VOL. 236, PG. 107 WAS COMPUTED BY HOLDING THE DEED DISTANCE NORTH OF THE WEST 1/4 CORNER AT POINT "A" AND THEN HOLDING THE DEED ANGLE AT POINT "A" AND DEED DISTANCE TO COMPUTE POINT "B" AND THEN INVERSING FROM POINT "B" TO THE M 70-67 MONUMENT AT POINT "C".
THIS SURVEY WAS PERFORMED BY KRIS DEGROOT, ADAM DEGROOT AND JERED CARPENTER USING A LEICA 1200 GPS RECEIVERS AND A LEICA 1203 TOTAL STATION WITH COMPUTATIONS BY KRIS DEGROOT AND DRAFTING BY BILL WARREN.

DATE: JULY 1, 2005
SCALE: 1" = 400'
PROJECT: 04-124
FILE: 04-124.DWG
SHEET 1 OF 1

REGISTERED PROFESSIONAL LAND SURVEYOR
Kristian O. Degroot
OREGON
JULY 17, 1981
KRISTIAN O. DEGROOT
194
RENEWAL DATE: 12-31-05

RECORD OF SURVEY
LOCATED IN
SECTIONS 1 AND 12, T.27 S., R.5 W., W.M.
DOUGLAS COUNTY, OREGON

BTS ENGINEERING & SURVEYING, INC.
431 S.E. MAIN ST., ROSEBURG, OR 97470
PHONE (541) 673-0966 FAX (541) 673-0105
OWNER: ERIK HELLENTHAL
10190 NORTH UMPQUA HWY.
ROSEBURG, OREGON 97470