

RECORD OF SURVEY

LOCATED IN
W 1/2, SECTION 18, T31S, R4W, W.M.
DOUGLAS COUNTY, OREGON

REGISTERED
PROFESSIONAL
LAND SURVEYOR
Kristian O. Degroot
OREGON
JULY 17, 1981
KRISTIAN O. DEGROOT
1941
RENEWAL DATE: 12-31-05

FILED
Date: 3-16-2005 By: J.P.
This survey consists of:
Map: M146-19
Narrative:
Corner Rpt:
DOUGLAS COUNTY
SURVEYOR

NARRATIVE:

THE PURPOSE OF THIS SURVEY WAS TO SUBDIVIDE THE WEST 1/2 OF SECTION 18, MONUMENT THE W 1/16 CORNER OF SECTIONS 7 & 18, THE W 1/4 CORNER AND N 1/16 CORNER OF SECTION 18 ONLY, AND THE NW 1/16, CW 1/16 AND SW 1/16 CORNERS OF SECTIONS 18 AND TO POST, BLAZE, PAINT AND FLAG THE BOUNDARY LINES AS SHOWN ON THE FACE OF THE MAP.

A GPS CONTROL SURVEY WAS COMPLETED AND RANDOM TRAVERSE LOOPS WERE SURVEYED BETWEEN THE GPS POINTS, CONTROLLING CORNERS, AND ALONG THE LINES POSTED. THE SURVEY WAS CONTROLLED BY THE S 1/4 CORNER, NW CLOSING CORNER, SW CLOSING CORNER AND THE SE CORNER OF SECTION 13, T.31S., R.5W. WHICH WERE FOUND AS RESTORED IN THEIR ORIGINAL POSITIONS AND ALSO BY MONUMENTS SET UNDER A 1973 USBLM DEPENDENT RESURVEY AT THE E 1/4 AND NE CORNER OF SECTION 13, T.31S., R.5W. AND ALSO BY MONUMENTS SET BY ROBERT THOMPSON IN 1959 UNDER M 15-24 AT THE N 1/4 AND C 1/4 CORNERS AND THE W 1/16 CORNER OF SECTION 7 & 18 AND ALSO BY A MONUMENT SET BY BRUCE SHANER IN 2002 PER M 139-61 AT THE CS 1/16 CORNER OF SECTION 18. I DID NOT ACCEPT THOMPSON'S MONUMENTS AT THE W 1/4 CORNER AND THE N 1/16 CORNER OF SECTION 18 ONLY BECAUSE THEY WERE SET AT PROPORTIONATE DISTANCE BETWEEN THE NW AND SW CLOSING CORNERS AND NOT ON THE EAST LINE OF SECTION 13. I DID ACCEPT AND HOLD THE NORTHING OF THESE CORNERS AND MONUMENTED NEW CORNERS ON THE EAST LINE OF SECTION 13 AS RESTORED BY THE USBLM UNDER THE 1973 DEPENDENT RESURVEY OF THE TOWNSHIP LINE THEREBY PRESERVING THE INTEGRITY OF THOMPSON'S INTERIOR CORNERS AND SUBDIVISION OF SECTION 18.

THIS SURVEY WAS PERFORMED BY LES FANNING, ADAM DEGROOT, AND JERED CARPENTER USING LEICA 1200 GPS SYSTEMS RECEIVER AND A LEICA 1203 TOTAL STATION WITH COMPUTATIONS BY KRIS DEGROOT AND DRAFTING BY BILL WARREN.

CORNER DESCRIPTIONS:

ALL NEW BEARING TREES HAVE DOUBLE BLAZED FACES WITH A BRASS WASHER STAMPED "PLS 1941" NAILED INTO THE LOWER BLAZE. BEARINGS ARE TAKEN TO THE CENTER OF THE TREE AT THE ROOT CROWN AND DISTANCES ARE MEASURED TO A NAIL IN THE ROOT CROWN AT THE SIDE AND CENTER OF THE TREE. ALL BEARING TREES HAVE A 6" RED BAND PAINTED AROUND THE TREE AND THE BLAZED FACE PAINTED RED AND BEARING TREE SIGNS NAILED TO THE TREE.

- ① **1/4 S7/S18 T.31S., R.4W., W.M.**
FOUND 1966 D.C.S.O. BCIP AND ACCESSORIES PER PLSS ID. NO. 140500.

T31S	R4W
S7	W 1/16
S18	
2005	
PLS 1941	
- ② **W 1/16 S7/S18 T.31S., R.4W., W.M.**
FOUND 6"X8"X14" STONE BY THOMPSON IN 1959 PER M 15-24, FIRMLY SET, PROJECTING 6" ABOVE THE GROUND. I REMOVE THE STONE AND AT THE EXACT CORNER, I SET A 5/8"X 30" IRON ROD 24" IN THE GROUND WITH A 2" DIA. ALUMINUM CAP STAMPED:

T31S	R4W
S7	W 1/16
S18	
2005	
PLS 1941	
- ③ **S7/S18 C.C. T.31S., R.4W., W.M.**
FOUND 1966 D.C.S.O. BCIP AND ACCESSORIES PER PLSS ID. NO. 100500.
- ④ **S12/S13 T.31S., R.5W., W.M.**
FOUND 1973 U.S.B.L.M. BCIP AND ACCESSORIES PER PLSS ID. NO. 100474.
- ⑤ **N 1/16 S18 ONLY, T.31S., R.4W., W.M.**
SET 5/8"X 30" IRON ROD 24" IN THE GROUND WITH A 2" DIA ALUMINUM CAP STAMPED:

T31S	R4W
R5W	N 1/16
S18	
2005	
PLS 1941	
- ⑥ **NW 1/16 S18, T.31S., R.4W., W.M.**
SET A 5/8"X 30" IRON ROD 26" IN THE GROUND WITH A 2" DIA. ALUMINUM CAP STAMPED:

T31S	R4W
NW	1/16
S18	
2005	
PLS 1941	
- ⑦ **C 1/4 S18 T.31S., R.4W., W.M.**
FOUND 2002 SHANER ENGINEERING ACAP AND ACCESSORIES PER PLSS ID. NO. 140440.
- ⑧ **CW 1/16 S18, T.31S., R.4W., W.M.**
SET A 5/8"X 30" IRON ROD 27" IN THE GROUND WITH A 2" DIA. ALUMINUM CAP STAMPED:

T31S	R4W
W 1/16	
C	S18
S18	
2005	
PLS 1941	
- ⑨ **1/4 S18 ONLY T.31S., R.4W., W.M.**
SET 5/8"X 30" IRON ROD 24" IN THE GROUND WITH A 2" DIA. ALUMINUM CAP STAMPED:

T31S	R4W
S18	
2005	
PLS 1941	
- ⑩ **1/4 S13 T.31S., R.5W., W.M.**
FOUND 1973 U.S.B.L.M. BCIP AND ACCESSORIES PER PLSS ID. NO. 100434.

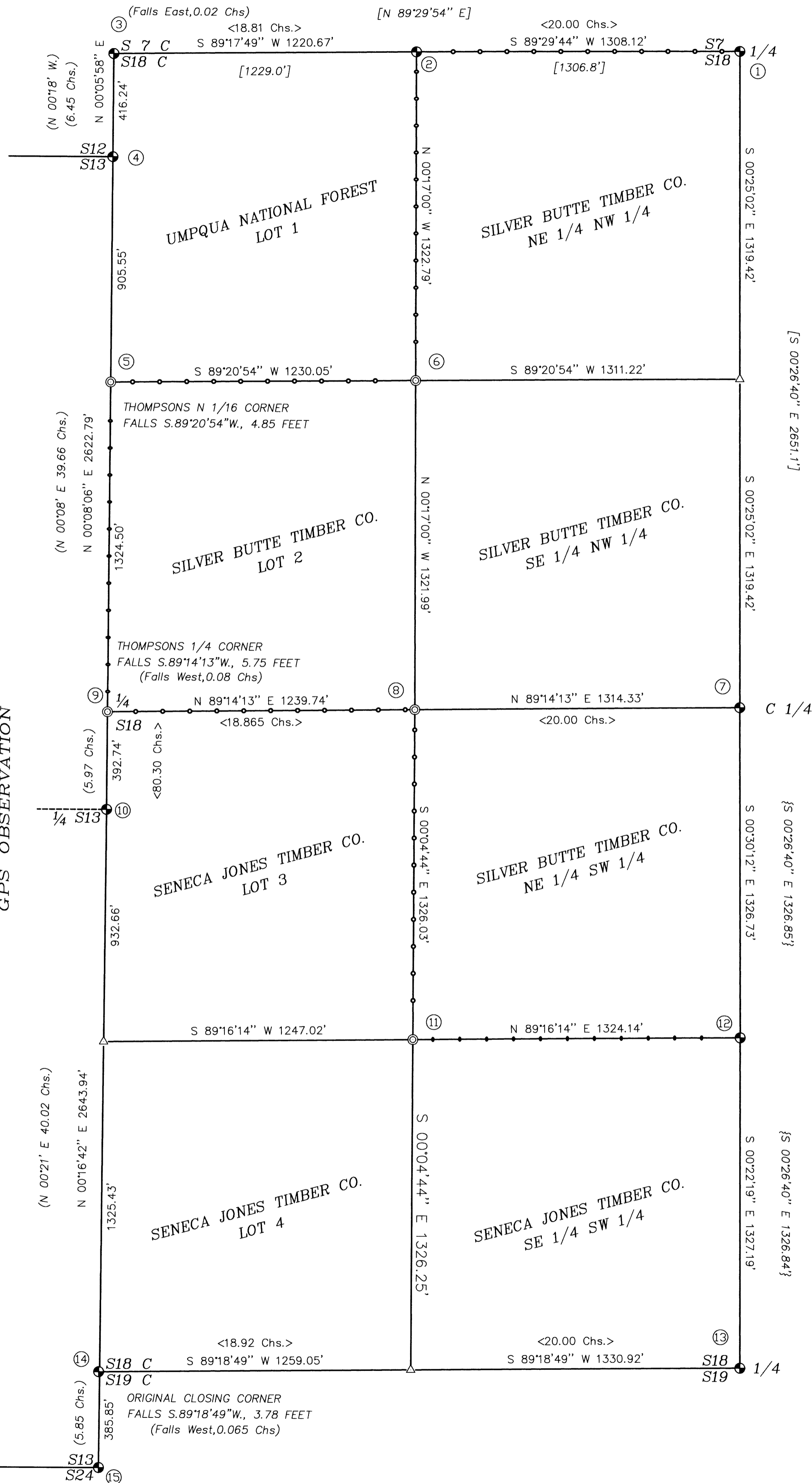
T31S	R5W
S13	
1966	
- ⑪ **SW 1/16 S18, T.31S., R.4W., W.M.**
SET 5/8"X 30" IRON ROD 26" IN THE GROUND WITH A 2" DIA. ALUMINUM CAP STAMPED:

T31S	R4W
SW	1/16
S18	
2005	
PLS 1941	
- ⑫ **CS 1/16 S18 T.31S., R.4W., W.M.**
FOUND 2002 SHANER ENGINEERING ACAP AND ACCESSORIES PER M 139-61.
- ⑬ **1/4 S18/S19 T.31S., R.4W., W.M.**
FOUND A 1966/1981 D.C.S.O. BCIP AND ACCESSORIES PER PLSS ID. NO. 140400.
- ⑭ **S18/S19 C.C. T.31S., R.4W., W.M.**
FOUND 1966 D.C.S.O. BCIP AND ACCESSORIES PER PLSS ID. NO. 100400.
- ⑮ **S13/S24 T.31S., R.5W., W.M.**
FOUND A 1 1/4" IRON PIPE (O.D.) BY D.C.S.O. IN 1966, FIRMLY SET, PROJECTING 12" ABOVE GROUND WITH A 2 1/2" BRASS CAP STAMPED:

COUNTY SURVEYOR'S OFFICE	
T31S	
R S13	R
5 S24	S19 4
W	W
1966	

LEGEND:

- ⊙ = SET 5/8" x 30" IRON ROD WITH 2" ALUMINUM CAP AS NOTED.
- ⊕ = FOUND MONUMENT AS NOTED
- △ = COMPUTED POINT
- = PROPERTY LINES POSTED WITH 6" STEEL POSTS.
- <> = RECORD PER 1895 USGLO
- () = RECORD PER 1973 USBLM DEPENDENT RESURVEY
- [] = RECORD PER THOMPSON, M 15-24
- { } = RECORD PER SHANER, M 139-61
- BCIP = BRASS CAPPED IRON PIPE
- ACAP = ALUMINUM CAPPED ALUMINUM PIPE



BTS ENGINEERING & SURVEYING, INC.
431 S.E. MAIN ST., ROSEBURG, OR 97470
PHONE (541) 673-0966 FAX (541) 673-0105

SCALE: 1" = 300'
DATE: MARCH 4, 2005

FOR: SILVER BUTTE TIMBER CO.
P.O. BOX 4
RIDDLE, OR 97469

JOB #: 04-069
FILE: 31-04-18.DWG
SHEET 1 OF 1