

RECORD OF SURVEY

LOCATED IN
SECTION 10, T31S, R6W, W.M.
DOUGLAS COUNTY, OREGON

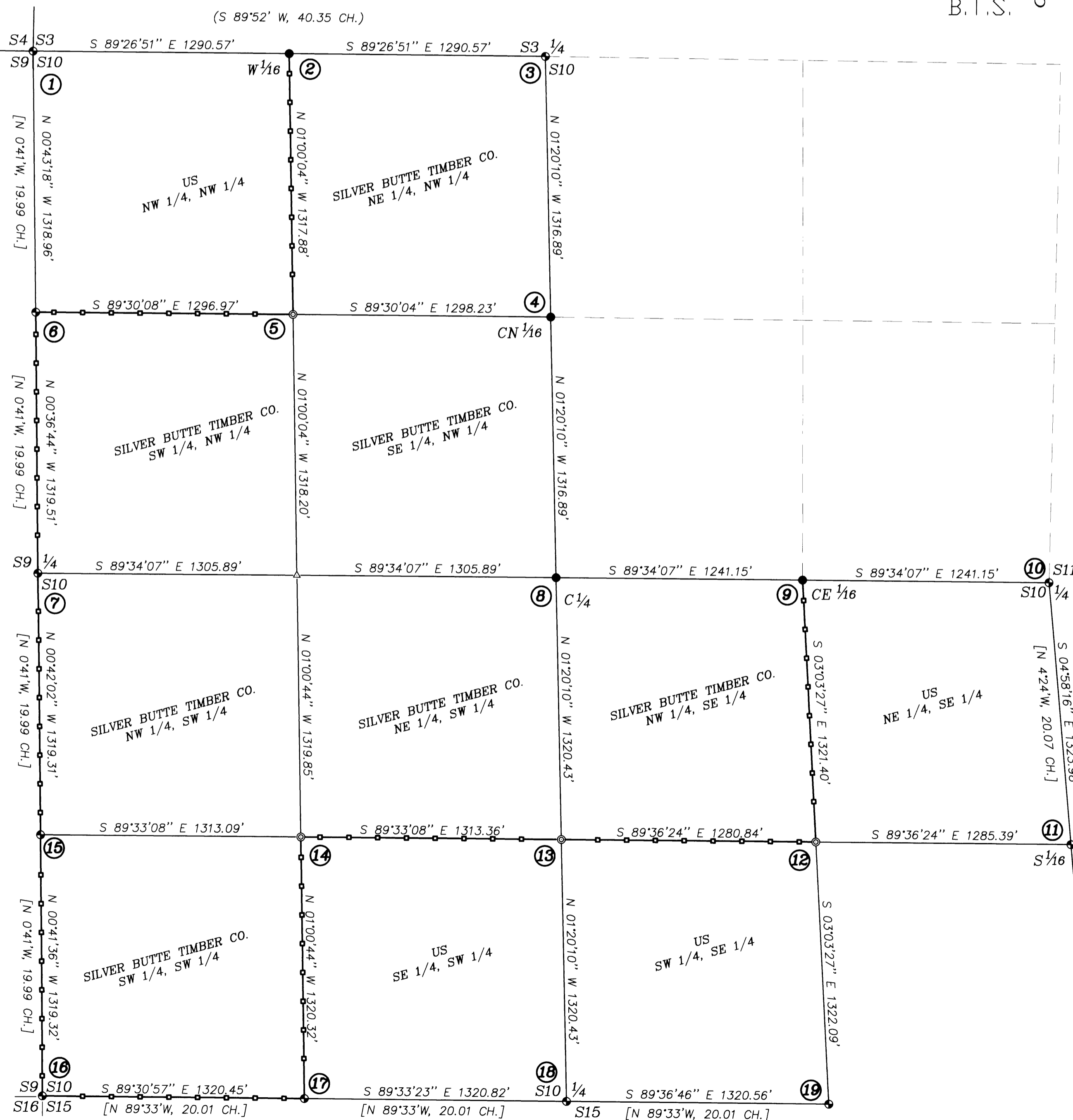
FILED
Date: 8-24-2004 By: SC
This survey consists of:
Map: M146-11
Name: _____
Corner: _____
DOUGLAS COUNTY
SURVEYOR

NARRATIVE:

THE PURPOSE OF THIS SURVEY WAS TO EXTEND THE WORK OF M 146-5 BY SUBDIVIDING THE SE 1/4, THE SW 1/4 AND THE NW 1/4 OF SECTION 10 AND MONUMENT THE CORNERS AND TO POST THE SILVER BUTTE TIMBER COMPANY BOUNDARY LINES IN THESE 1/4 SECTIONS. RANDOM LINE TRAVERSE LOOPS WERE SURVEYED FROM M 146-5 CONTROL POINTS TO CONTROLLING CORNERS AND ALONG BOUNDARY LINES POSTED. THE NORTHWEST CORNER, NORTH 1/4 CORNER, EAST 1/4 CORNER AND SOUTHWEST CORNER ARE CORNERS RESTORED ON THEIR ORIGINAL POSITIONS. THE SOUTH 1/4 CORNER AND WEST 1/4 CORNERS WERE RESTORED BY PROPORTIONATE MEASUREMENT UNDER A 1980 USBLM DEPENDENT RESURVEY. THE S 1/16 S10/S11, E 1/16 S10/S15, W 1/16 S10/S15, S 1/16 S9/S10 AND N 1/16 S9/S10 CORNERS WERE ESTABLISHED UNDER THE 1980 USBLM DEPENDENT RESURVEY. THE W 1/16 S3/S10, CN 1/16, C 1/4 AND CE 1/16 CORNERS WERE ESTABLISHED UNDER M 146-5. USING THESE CORNER POSITIONS, THE SE 1/4, SW 1/4 AND NW 1/4 OF SECTION 10 WERE SUBDIVIDED AS PER THE MANUAL OF SURVEYING INSTRUCTIONS, 1973 AND THE LAWS OF THE STATE OF OREGON AND THE NW 1/16, SW 1/16, CS 1/16 AND SE 1/16 WERE MONUMENTED BY THIS SURVEY. THIS SURVEY WAS PERFORMED BY LES FANNING, ADAM DEGROOT AND MATT DIXON USING LEICA SR299 GPS RECEIVER AND A NIKON DMT 531 TOTAL STATION WITH COMPUTATIONS BY KRIS DEGROOT AND DRAFTING BY BILL WARREN.

REGISTERED
PROFESSIONAL
LAND SURVEYOR
Kristian O. Degroot
OREGON
JULY 17, 1981
KRISTIAN O. DEGROOT
1941
RENEWAL DATE: 12-31-05

B.T.S.
GPS OBSERVATION
PER 146-5



CORNER DESCRIPTIONS:

ALL NEW BEARING TREES HAVE DOUBLE BLAZED FACES WITH A BRASS WASHER STAMPED "PLS 1941" NAILED INTO THE LOWER BLAZE. BEARINGS ARE TAKEN TO THE CENTER OF THE TREE AT THE ROOT CROWN AND DISTANCES ARE MEASURED TO A NAIL IN THE ROOT CROWN AT THE SIDE AND CENTER OF THE TREE. BEARING TREES WERE MEASURED WITH A TOTAL STATION. ALL BEARING TREES HAVE A 6" RED BAND PAINTED AROUND THE TREE AND THE BLAZED FACE PAINTED RED AND BEARING TREE SIGNS NAILED TO THE TREE.

- ① **S3/S4/S9/S10**
FOUND ORIGINAL CORNER TREE 1960 DCSO BCIP, WITNESS CORNER AND ACCESSORIES PER PLSS ID. NO. 400600 AND M 137-77.
- ② **W 1/16 S3/S10**
FOUND 5/8" IRON ROD W/2" ALUMINUM CAP AND ACCESSORIES PER M 146-5
- ③ **1/4 S3/S10**
FOUND 1966 DCSO BCIP AND ACCESSORIES PER PLSS ID. NO. 440600 AND M 146-5
- ④ **CN 1/16**
FOUND 5/8" IRON ROD W/2" ALUMINUM CAP AND ACCESSORIES PER M 146-5
- ⑤ **NW 1/16 S10**
SET: A 5/8" X 30" IRON ROD 28" IN GROUND WITH A 2" ALUMINUM CAP STAMPED:
T31S R6W
NW 1/16 • S10
2004
PLS 1941
FROM WHICH NEW BEARING TREES:
A 9" D. FIR BEARS S.74°30'W, 40.6 FT. SCRIBED "NW 1/16 S10 BT".
A 7" D. FIR BEARS S.23°30'W, 35.9 FT. SCRIBED "NW 1/16 S10 BT".
- ⑥ **N 1/16 S9/S10**
FOUND USBLM BCIP AND ACCESSORIES PER 1980 DEPENDENT RESURVEY.
- ⑦ **1/4 S9/S10**
FOUND 1980 USBLM BCIP AND ACCESSORIES PER PLSS ID. NO. 400540
- ⑧ **C 1/4**
FOUND 5/8" IRON ROD W/2" ALUMINUM CAP AND ACCESSORIES PER M 146-5
- ⑨ **CE 1/16 S10**
FOUND 5/8" IRON ROD W/2" ALUMINUM CAP AND ACCESSORIES PER M 146-5
- ⑩ **1/4 S10/S11**
FOUND 1966 DCSO BCIP AND ACCESSORIES PER PLSS ID NO. 500540
- ⑪ **S 1/16 S10/S11**
FOUND USBLM BCIP AND ACCESSORIES PER 1980 DEPENDENT RESURVEY
- ⑫ **SE 1/16 S10**
SET: A 5/8" X 30" IRON ROD 28" IN GROUND WITH A 2" ALUMINUM CAP STAMPED:
T31S R6W
SE 1/16 • S10
2004
PLS 1941
FROM WHICH NEW BEARING TREES:
A 8" D. FIR BEARS N.05°45'W, 31.1 FT. SCRIBED "SE 1/16 S10 BT".
A 7" D. FIR BEARS S.88°15'W, 22.4 FT. SCRIBED "SE 1/16 S10 BT".

- ⑬ **CS 1/16 S10**
SET: A 5/8" X 30" IRON ROD 28" IN GROUND WITH A 2" ALUMINUM CAP STAMPED:
T31S R6W
C
S 1/16 • S10
C
2004
PLS 1941
FROM WHICH NEW BEARING TREES:
A 8" D. FIR BEARS S.13°15'W, 37.7 FT. SCRIBED "CS 1/16 S10 BT".
A 10" D. FIR BEARS S.88°15'W, 13.1 FT. SCRIBED "CS 1/16 S10 BT".
- ⑭ **SW 1/16 S10**
SET: A 5/8" X 30" IRON ROD 28" IN GROUND WITH A 2" ALUMINUM CAP STAMPED:
T31S R6W
SW 1/16 • S10
2004
PLS 1941
FROM WHICH NEW BEARING TREES:
A 8" D. FIR BEARS S.43°00'W, 9.8 FT. SCRIBED "SW 1/16 S10 BT".
A 10" D. FIR BEARS N.50°15'W, 9.7 FT. SCRIBED "SW 1/16 S10 BT".
- ⑮ **S 1/16 S9/S10**
FOUND 1980 USBLM BCIP PER 1980 DEPENDENT RESURVEY.
FROM WHICH NEW BEARING TREES BY JELLY AND ROGERS IN 1980:
A 17" MADRONE BEARS S.40°00'E, 9.7 FT. WITH SCRIBE MARKS VISIBLE (REC. S40°E, 15 LKS.)
A 8" D. FIR BEARS N.49°45'W, 31.6 FT. WITH HEALED BLAZE (REC. N50°W, 49 LKS.)
- ⑯ **S9/S10/S15/S16**
FOUND 1970 DCSO BCIP PER PLSS ID. NO. 400500
FROM WHICH BEARING TREES BY POWELL IN 1970:
A 12" ALDER BEARS N.83°30'E, 10.6 FEET WITH HEALED BLAZE (REC. N83°45'E, 16 LKS.)
A 59" FIR BEARS S.13°15'E, 95.5 FEET WITH HEALED BLAZE (REC. S13°30'E, 143 LKS.)
A 40" FIR STUMP BEARS S.68°00'W, 9.9 FT. WITH BARK SCRIBE MARKS VISIBLE (REC. S64°15'W, 14 LKS.)
A 18" YEW BEARS N.16°30'W, 59.3 FEET WITH SCRIBE MARKS VISIBLE (REC. N16°15'W, 89 LKS.)
AND A BEARING TREE BY JELLY AND ROGERS IN 1980:
A 6" D. FIR BEARS S.53°15'W, 27.9 FEET WITH HEALED BLAZE (REC. S.55°W, 42 LKS.)
- ⑰ **W 1/16 S10/S15**
FOUND 1980 USBLM BCIP AND ACCESSORIES PER 1980 DEPENDENT RESURVEY
- ⑱ **1/4 S10/S15**
FOUND 1980 USBLM BCIP AND ACCESSORIES PER PLSS ID. NO. 440500
- ⑲ **E 1/16 S10/S15**
FOUND USBLM BCIP PER 1980 DEPENDENT RESURVEY
FROM WHICH BEARING TREES BY JELLY AND ROGERS IN 1980:
A 66" FIR STUMP BEARS N.37°45'E, 9.8 FEET WITH SCRIBE MARKS VISIBLE (REC. N.36°30'E, 10.5 LKS.)
AND A REFERENCE MONUMENT BY JELLEY AND ROGERS IN 1980:
A 2 1/2" BRASS CAPPED IRON POST BEARS S.22°14'37"W, 12.60 FEET (REC. S.21°15'W, 20.5 LKS.)

LEGEND:

- ⊙ = SET 5/8" x 30" IRON ROD W/ 2" ALUMINUM CAP AS NOTED.
- = FOUND PLSS MONUMENT AS NOTED
- = FOUND 5/8" IRON ROD W/2" ALUMINUM CAP AND ACCESSORIES PER M 146-5
- △ = COMPUTED POINT
- () = RECORD PER 1882 USGLO SURVEY
- [] = RECORD PER 1980 USBLM DEPENDENT RESURVEY
- = PROPERTY LINES BLAZED, PAINTED & POSTED WITH 6" STEEL POSTS.

BTS ENGINEERING & SURVEYING, INC.
431 S.E. MAIN ST., ROSEBURG, OR 97470
PHONE (541) 673-0966 FAX (541) 673-0105

SCALE: 1" = 400'	FOR: SILVER BUTTE TIMBER CO. P.O. BOX 4 RIDDLE, OR 97469	JOB #: 03-111 FILE: 31-06-10.DWG SHEET 1 OF 1
DATE: AUGUST 17, 2004		