

**RECORD OF SURVEY**  
**FOR: SENECA JONES TIMBER COMPANY**  
**ALL QUARTERS SECTION 34 AND E1/2,**  
**SECTION 27, T29S, R3W, W.M.**  
**DOUGLAS COUNTY, OREGON**  
**28 OCTOBER, 2004**

**FILED**  
 Date: 12/9/2004 By: JC  
 This survey consists of:  
 Map: M145-76  
 Narrative:  
 Corner Rpt:  
**DOUGLAS COUNTY**  
**SURVEYOR**

**NARRATIVE:**

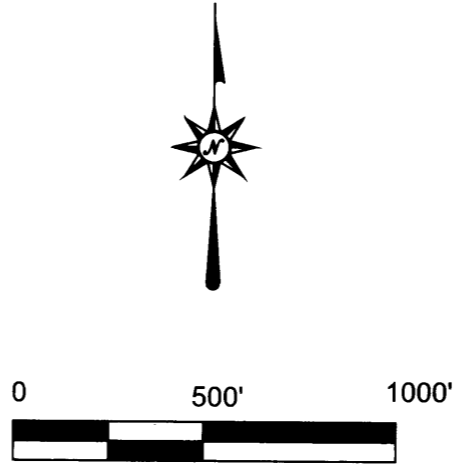
THE PURPOSE OF THIS SURVEY WAS TO MARK THE SECTION LINES SHOWN AS POSTED ON THIS RECORD OF SURVEY AND RE-MONUMENT OR RE-ESTABLISH ANY OBLITERATED OR LOST CONTROLLING CORNERS.

A CONTROL TRAVERSE WAS RUN BETWEEN CONTROLLING CORNERS FOR THE PURPOSE OF POSTING LINE AND CORNER RE-ESTABLISHMENT. NO ORIGINAL EVIDENCE OF THE 1/4 CORNER COMMON TO SECTIONS 34 AND 35 WAS RECOVERED. THE CORNER WAS RE-ESTABLISHED AT PROPORTIONATE POSITION FROM CONTROLLING SECTION CORNERS. THE 1/4 CORNER COMMON TO SECTIONS 27 AND 34 WAS RE-ESTABLISHED BY DISTANCE - DISTANCE INTERSECTION FROM ORIGINAL ACCESSORIES.

LINE REFERRED TO AS POSTED WAS MARKED WITH RED PAINTED BLAZES, RED FLAGGING AND 5-1/2" GALVANIZED STEEL POSTS SET AT APPROXIMATELY 200' INTERVALS OR LESS.

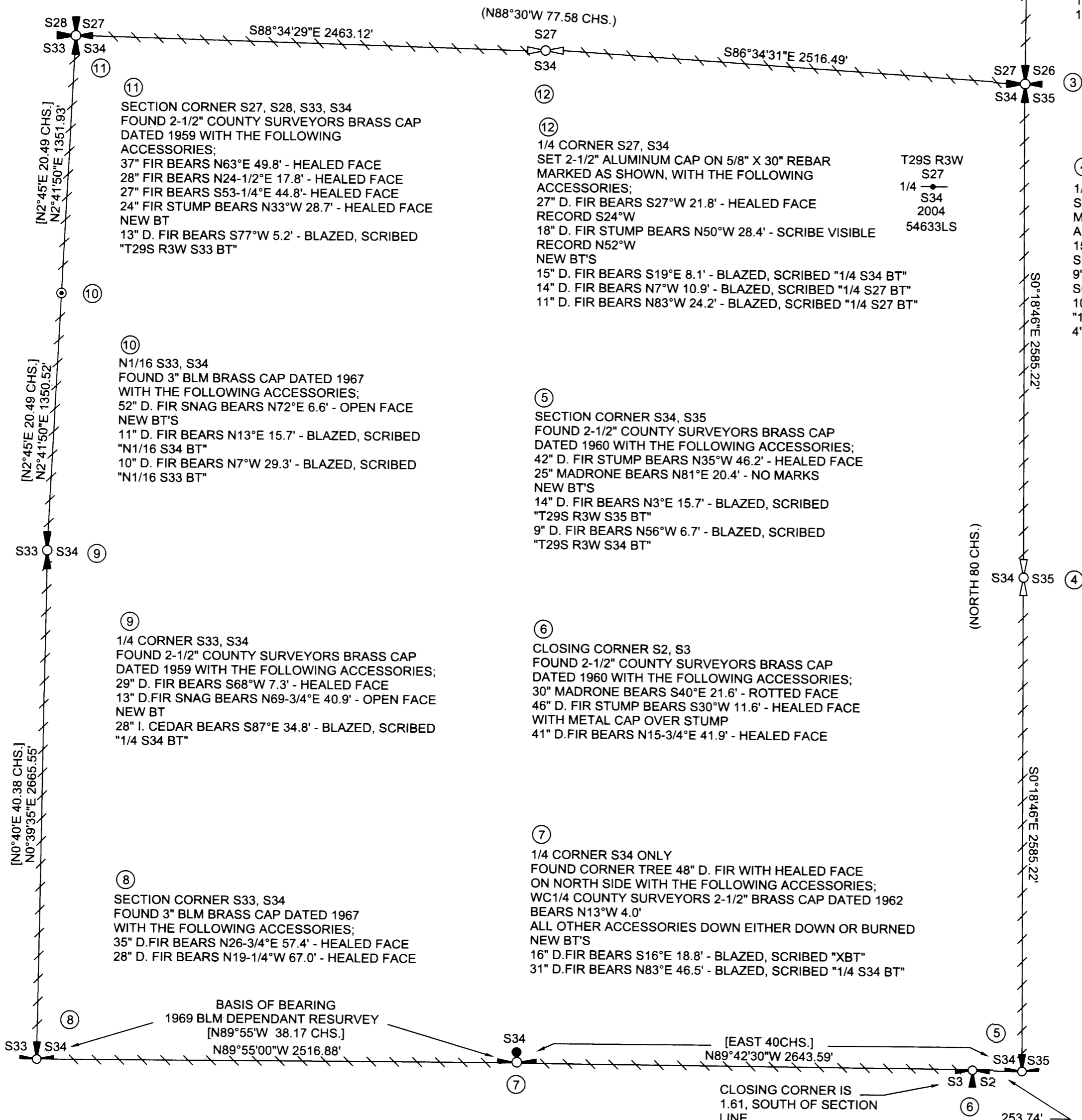
THE BASIS OF BEARING FOR THIS SURVEY WAS THE SOUTH LINE OF SECTION 34 FROM THE SOUTH 1/4 CORNER TO THE SOUTHWEST SECTION CORNER AS PLATED IN THE 1969 BLM DEPENDANT RESURVEY OF SECTION 33, TOWNSHIP 29 SOUTH, RANGE 3 WEST, WILLAMETTE MERIDIAN.

THIS SURVEY WAS PERFORMED USING A NIKON TOTAL STATION AND ASHTECH GLOBAL POSITIONING SYSTEM.



**LEGEND**

- FOUND WITNESS CORNER AS NOTED
- ⊕ FOUND SECTION CORNER COMMON TO TWO SECTIONS ONLY AS NOTED
- ⊙ FOUND 1/4 CORNER AS NOTED
- ⊕ FOUND SECTION CORNER COMMON TO FOUR SECTIONS AS NOTED
- ⊙ SET 1/4 CORNER AS NOTED
- ⊙ FOUND 1/16 CORNER AS NOTED
- POSTED LINE AS DEFINED IN NARRATIVE
- [ ] 1969 BLM RECORD DATA
- ( ) 1881 GLO RECORD DATA



- ① SECTION CORNER S22, S23, S26, S27  
 FOUND 2-1/2" DOUGLAS COUNTY BRASS CAP DATED 1976, WITH THE FOLLOWING ACCESSORIES:  
 AS MARKED FROM 2003 BLM VISITATION  
 25" MAPLE BEARS N45°E 6.9' - POSSIBLE OLD BLAZE  
 30" CEDAR BEARS S65-1/2°E 103.5' - HEALED FACE  
 RECORD S63°E 102.8'  
 25" D. FIR BEARS S40-1/4°W 61.2' - HEALED FACE  
 NO RECORD BLM TAGGED 2003  
 26" D. FIR BEARS S24-1/2°E 33.2' - HEALED FACE  
 NO RECORD BLM TAGGED 2003
- ② WC 1/4 S26, S27  
 FOUND 2-1/2" DOUGLAS COUNTY BRASS CAP DATED 1961 30' NORTH OF TRUE CORNER POSITION, WITH THE FOLLOWING ACCESSORIES:  
 20" D. FIR BEARS N37°W 13.5' - HEALED FACE  
 19" D. FIR BEARS N61°E 30.4' - HEALED FACE
- ③ SECTION CORNER S26, S27, S34, S35  
 FOUND 2-1/2" COUNTY SURVEYORS BRASS CAP DATED 1961 WITH THE FOLLOWING ACCESSORIES:  
 16" D. FIR STAUB BEARS S81°E 19.8' - SCRIBE VISIBLE  
 19" D. FIR BEARS N27°W 43.7' - HEALED FACE  
 14" I. CEDAR BEARS S43°E 14.6' - HEALED FACE  
 12" I. CEDAR BEARS S1°W 32.7' - HEALED FACE
- ④ 1/4 CORNER S34, S35  
 SET 2-1/2" ALUMINUM CAP ON 5/8" X 30" REBAR MARKED AS SHOWN, WITH THE FOLLOWING ACCESSORIES:  
 15" HEMLOCK BEARS N40-1/2°W 27.7' - BLAZED, SCRIBED "1/4 S34 BT"  
 9" HEMLOCK BEARS S81-1/2°W 17.8' - BLAZED, SCRIBED "1/4 S34 BT"  
 10" HEMLOCK BEARS S7°W 17.0' - BLAZED, SCRIBED "1/4 S34 BT"  
 4" D. FIR BEARS S89°E 14.1' - BLAZED, SCRIBED "X BT"

T29S R3W  
 1/4  
 S34 + S35  
 2004  
 54633LS

REGISTERED PROFESSIONAL  
 LAND SURVEYOR  
*Ronald L. Rice*  
 OREGON  
 JULY 9, 2002  
 RONALD L. RICE  
 54633LS  
 EXPIRES: 12-31-2004

**Ward NorthWest, Inc.**  
 P.O. BOX 105 FLORENCE, OR 97439  
 (541) 997-9201 FAX: 541-997-3546

FILE NAME		
04-21.TRV	DATE	DRAWN BY
500 FV/in	10/28/04	RLR
JOB	REVISION	SHEET
04-21	-----	1/1

This map drawn with TRAVERSE PC Software