

FILED
 Date: 10-21-2004 By: ALJ
 This survey consists of:
 Map: M 145-62
 Narrative:
 Corner Rpt:
 DOUGLAS COUNTY
 SURVEYOR

NARRATIVE

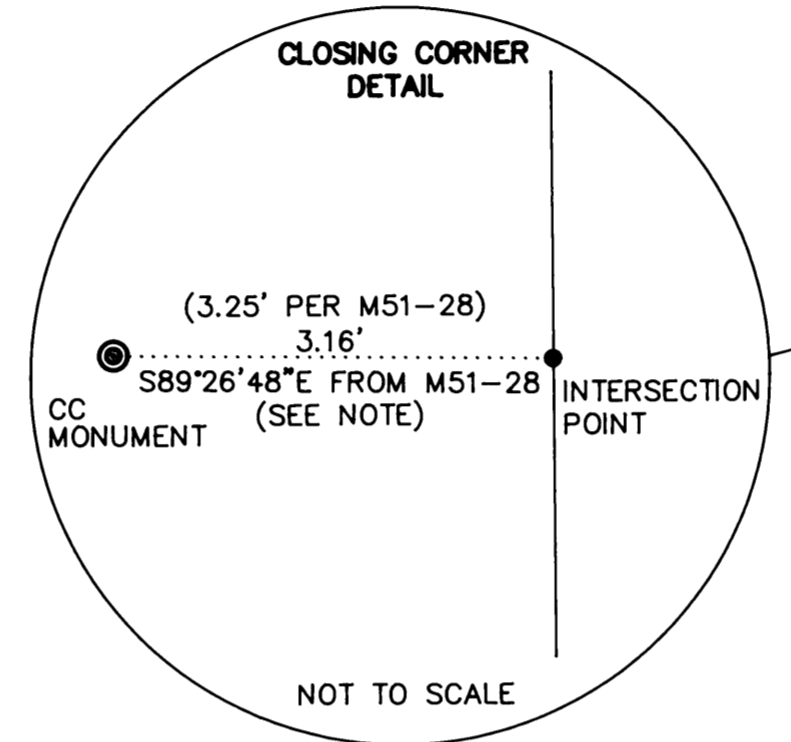
THE PURPOSE OF THIS SURVEY WAS TO REESTABLISH THE N1/16 ON THE EAST LINE OF SECTION 17, TOWNSHIP 22 SOUTH, RANGE 11 WEST, WILLAMETTE MERIDIAN, DOUGLAS COUNTY, OREGON, FOR MENASHA FOREST PRODUCTS CORPORATION. THE CONTROLLING SURVEYS WERE THE 1894 GLO SURVEY BY WILLIAM WHIPPLE, 1968 CORNER RENEWALS BY ARNOLD GIBSON (CS55/101), AND A 1973 SURVEY BY ARNOLD GIBSON (M51-28).

THE WEST LINE OF SECTION 16 WAS ESTABLISHED FIRST AND IS THE SENIOR LINE. SECTION 17 THEN CLOSED UPON THIS SENIOR LINE. DUE TO A SLIDE NO MONUMENT WAS FOUND AT THE NW CORNER SECTION 16. THE ONLY EVIDENCE OF THE N1/16 WAS A FIR BT THAT IS UPROOTED AND SLID OUT OF POSITION. THE N1/16 WAS THEN REESTABLISHED FOLLOWING THE 1973 BLM MANUAL OF SURVEYING INSTRUCTIONS. IT WAS CALCULATED BETWEEN THE NE CLOSING CORNER OF SECTION 17 AND THE E1/4 OF SECTION 17 AND THEN SLID TO FALL ON THE SENIOR LINE. THE BASIS OF BEARING IS BETWEEN THE NW CORNER OF SECTION 16 AND THE W1/4 OF SECTION 16 ON SURVEY M51-28.

THE EQUIPMENT USED WAS A NIKON DTM530 TOTAL STATION WITH HP48GX DATA COLLECTOR. DISTANCES MEASURED TO BEARING TREES ESTABLISHED IN THIS SURVEY ARE TO A SPIKE SET AT SIDE CENTER OF THE TREE. ALL OTHER DISTANCES ARE MEASURED TO SIDE CENTER UNLESS NOTED. BEARINGS WERE MEASURED TO THE CENTER OF THE TREE USING A HAND COMPASS. A TAG WAS ATTACHED TO THE TREE FACING THE CORNER WITH AN ORANGE BAND PAINTED AROUND THE TREE. LINE SHOWN AS MARKED WAS BLAZED AND PAINTED ORANGE. THE ASSISTING PERSONNEL WAS DOYCE ROSE.

CC S8 & S17 (CS55/101)
 FD. 1 1/2" IRON PIPE WITH 3" BRASS CAP
 MARKED "T22S CC S8 S17 S16 R11W 1969 RS359"
 FD. BT'S:
 21" FIR, S52°E 45.3' TO SPIKE, HEALED FACE
 PLACED NEW TAG (RECORD S56°E 45.1')
 46" FIR STUMP, S33°E 43.1', CHOPPED
 OPEN FACE (RECORD 43.6')
 48" FIR STUMP, S18°W 26.3', HEALED FACE
 (RECORD 27.1')
 11" MAPLE, S60°W 10.0' TO SPIKE, HEALED FACE
 50" FIR STUMP, N25°W 26.9'

NW COR S16 (CS55/101)
 SET 1 1/2"x30" IRON PIPE WITH 2" BRASS CAP
 MARKED: "T22S R11W S9 S8 S16 2004 LS2869"
 FD. BT'S:
 16" FIR SNAG, S52°W 4.0', VISIBLE SCRIBE "2S"
 45" ROTTEN FIR STUMP, S69°W 15.7' TO FACE, NO MARKS
 49" ROTTEN FIR STUMP, N12°W 35.6' TO FACE, NO MARKS
 NEW BT'S:
 18" ALDER, N63°E 21.6', BARK SCRIBED "T22SR11WS16BT"
 35" MAPLE, S79°W 94.7', SCRIBED "T22SR11WS8BT"
 "OX" CHISLED IN ROCK FACE, S57°E 1.2' TO CENTER OF "X"

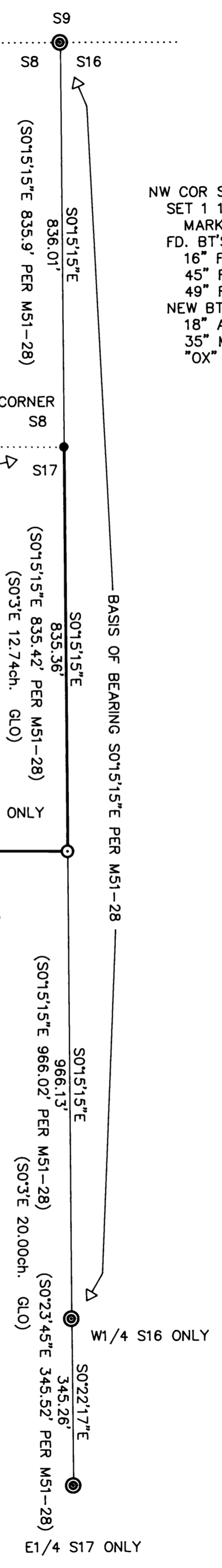


NOTE: WITH GOOD COMPARISON TO SURVEY M51-28 AND SHORT DISTANCE TO THE SENIOR LINE, THE N1/4 S17 WAS NOT TIED. BEARING OF CLOSING LINE IS FROM SURVEY M51-28

CN1/16 S17 (M51-28)
 FD. 3" BRASS CAP CEMENTED IN ROCK
 MARKED: "C-C N1/16 S17 1973 RS359"
 FD. BT:
 41" ROTTEN FIR STUMP, S52°W
 RECORD DISTANCE 76.3', HEALED FACE
 FD. BEARING OBJECT:
 "XBO" CHISLED IN ROCK, S52°E 6.8' TO "X"
 NEW BT:
 30" MAPLE, N44°E 18.1', SCRIBED "1/16S17BT"

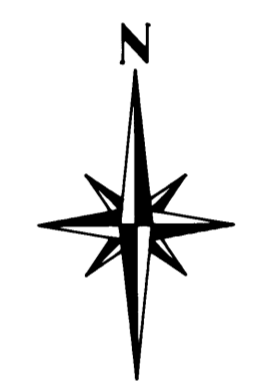
CN1/16 S17
 S89°32'57"E
 3045.28'
 (S89°33'24"E 3045.56' PER M51-28)

N1/16 S17 ONLY
 SET 1 1/2"x30" IRON PIPE WITH 2" BRASS CAP
 MARKED "N1/16 S17 2004 LS2869"
 NEW BT'S:
 9" FIR, N42°E 28.9', SCRIBED "1/16S17BT"
 7" MAPLE, S85°W 34.7',
 BARK SCRIBED "1/16S17BT"



W1/4 S16 ONLY (CS55/101)
 FD. TACK IN ORIGINAL STONE, VISIBLE "1/4"
 FD. BT'S:
 21" FIR, N59°E 9.1' TO HEALED FACE
 (RECORD 9.4')
 30" FIR, S12°E 16.3' TO HEALED FACE
 (RECORD 16.8') PLACED NEW TAG

E1/4 S17 ONLY (M51-28)
 FD. 1 1/2" IRON PIPE WITH 3" BRASS CAP
 MARKED "1/4 S17 1973 RS359"
 NEW BT'S:
 16" FIR, S21°W 69.5', SCRIBED "1/4S17BT"
 12" ALDER, S74°W 47.7',
 BARK SCRIBED "1/4S17BT"



LEGEND

PROJECTED LINES
 SURVEYED LINES ————
 PAINTED & BLAZED LINES ————
 FOUND CORNERS ●
 CORNERS SET ○
 CALCULATED CORNERS ●
 RECORD MEASUREMENTS (BEARING, DISTANCE)

**MENASHA FOREST PRODUCTS
 PROPERTY SURVEY
 T22S R11W S17**

PROJECT NO:	SCALE: 1" = 200'
DRAWN BY: B. BACON	DATE: 10/7/04
CHECKED BY: J. MINOR	SHT: OF: 1 1
APPROVED BY:	

REGISTERED
 PROFESSIONAL
 LAND SURVEYOR

Brent W. Bacon
 OREGON
 JULY 14, 1998
BRENT W. BACON
 2869

SURVEYED BY: BRENT W. BACON
 MENASHA FOREST PRODUCTS
 P.O. BOX 588
 NORTH BEND, OR. 97459
 LICENSE RENEWAL: 12-31-2005