

PURPOSE

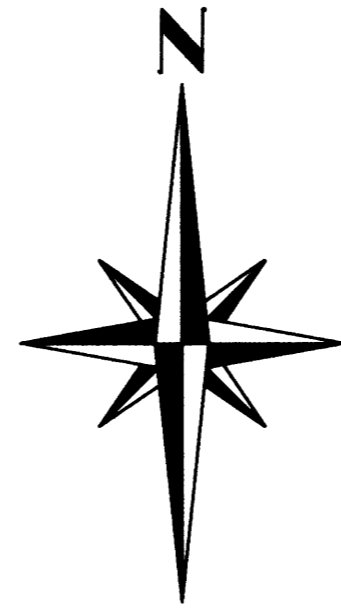
TO MARK PROPERTY LINES THAT SEPARATE STATE FOREST LANDS AND PRIVATE LANDS LOCATED IN SECTIONS 24, TOWNSHIP 23 SOUTH, RANGE 10 WEST, WILLAMETTE MERIDIAN.

PROCEDURE

A RANDOM TRAVERSE USING A LEICA TPS 1101 TOTAL STATION WAS USED TO CONNECT THE CONTROLLING CORNERS. BEARING AND DISTANCE WERE COMPUTED AND OFFSETS CALCULATED TO POINTS ON TRUELINE FOR CARSONITE BOUNDARY MARKERS. ALL CORNER ACCESSORIES WERE MARKED AS OUTLINED IN THE "MANUAL OF INSTRUCTIONS FOR THE SURVEY OF THE PUBLIC LANDS OF THE U.S." 1973. BEARINGS TO ACCESSORIES WERE TAKEN WITH A STAFF COMPASS SET AT 20° EAST MAGNETIC DECLINATION. DISTANCES WERE MEASURED TO AN ALUMINUM NAIL IN BT FACE. FOR A DETAILED REPORT ON FOUND CORNERS SEE COUNTY RECORDS.

BASIS OF BEARING

LLOYD D. SMITH 1981 SURVEY (COUNTY SURVEY NO. M89-40) FROM THE CENTER ONE QUARTER CORNER SECTION 24 TO THE ONE QUARTER CORNER COMMON TO SECTIONS 13 AND 24, TOWNSHIP 23 SOUTH, RANGE 10 WEST, WILLAMETTE MERIDIAN.



SURVEY BY:

REGISTERED  
PROFESSIONAL  
LAND SURVEYOR

*James M. McIntosh*

OREGON  
JULY 13, 1984  
JAMES M. MCINTOSH  
2103

JAMES M. MCINTOSH  
63612 FIFTH ROAD  
COOS BAY, OREGON

EXPIRATION DATE OF CERTIFICATE 12-31-04

FILED

Date: 10-5-2004 By: JP

This survey consists of:

Map: M 145-50

Narrative: \_\_\_\_\_

Corner Rpt: \_\_\_\_\_

DOUGLAS COUNTY  
SURVEYOR

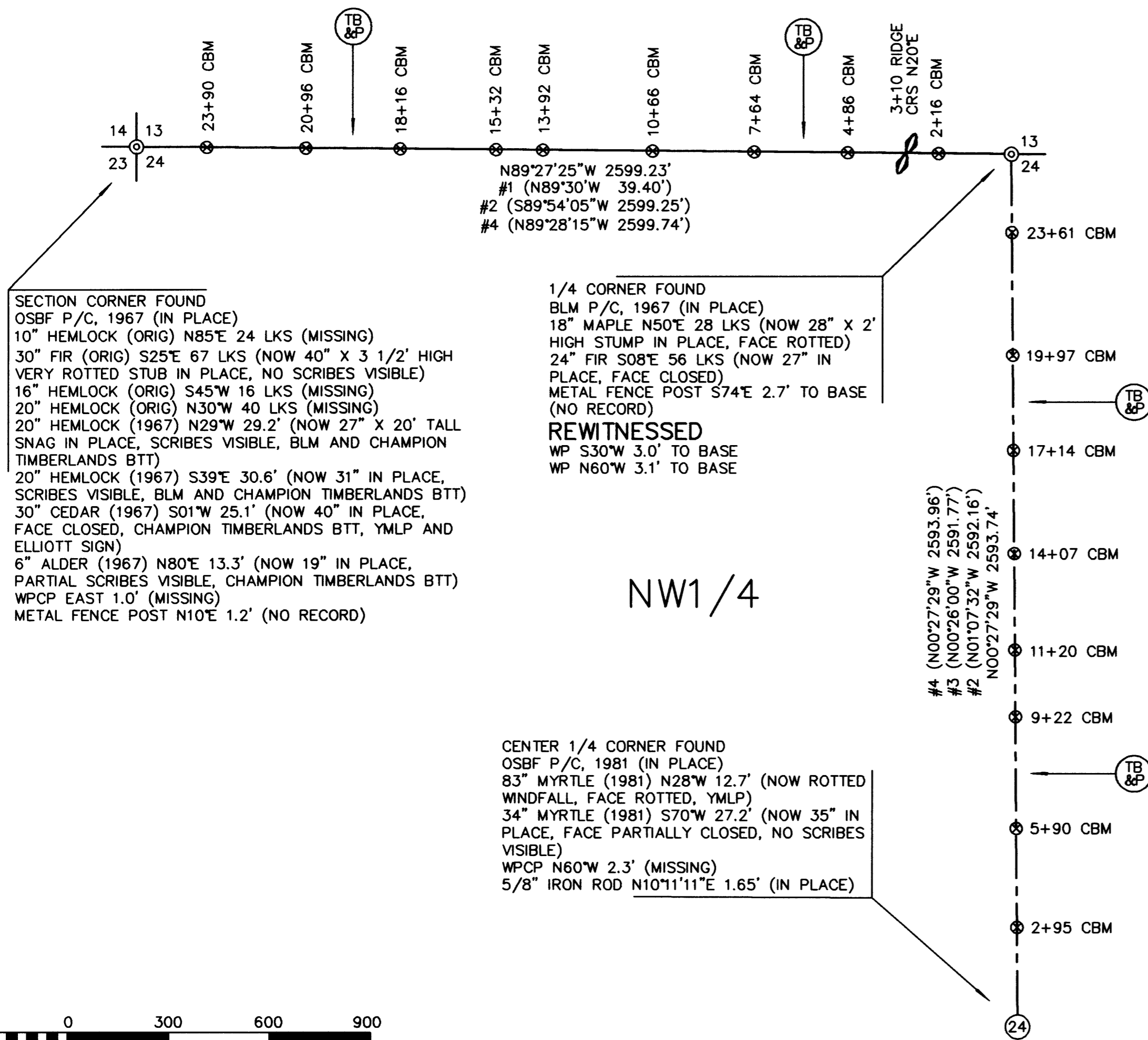
SURVEY FOR:  
STATE OF OREGON - DEPARTMENT OF FORESTRY  
NW1/4 SECTION 24, T.23S., R.10W., W.M.

DOUGLAS COUNTY, OREGON  
LEICA TOTAL STATION SURVEY BY:  
J.M. MCINTOSH, T. VAN VLEET

AND R.C. HALL  
DRAWN BY: T. VAN VLEET  
AUGUST 24, 2004  
SCALE 1" = 300'

LEGEND

- OSBF P/C = OREGON STATE BOARD OF FORESTRY 1 1/2" X 36" GALVANIZED IRON PIPE WITH 3" BRONZE CAP
- BLM P/C = BUREAU OF LAND MANAGEMENT 2 1/2" X 28" IRON PIPE WITH BRASS CAP
- = TRUE BLAZED AND POSTED
- BTT = BEARING TREE TAG
- BT = BEARING TREE
- WP = ORANGE CARSONITE MARKER CBM-250 LABELED WITNESS POST
- = MONUMENT FOUND
- = ORANGE CARSONITE MARKER AND STATION CBM-250 LABELED BOUNDARY MARKER
- WPCP = 4" X 4" X 72" WHITE PAINTED CEDAR POST
- CRS = COURSE
- YMLP = YELLOW METAL LOCATION POSTER
- #1 ( ) = RECORD BEARING AND DISTANCE IN CHAINS DONALD R. BECK, 1967, GROUP NO. 658
- #2 ( ) = RECORD BEARING AND DISTANCE IN FEET ARNOLD G. GIBSON, 1972, COUNTY SURVEY NO. M47-1
- #3 ( ) = RECORD BEARING AND DISTANCE IN FEET RICHARD J. HINTZ, 1974, COUNTY SURVEY NO. 55/340-3
- #4 ( ) = RECORD BEARING AND DISTANCE IN FEET LLOYD D. SMITH, 1981, COUNTY SURVEY NO. M89-40



SECTION CORNER FOUND  
OSBF P/C, 1967 (IN PLACE)  
10" HEMLOCK (ORIG) N85°E 24 LKS (MISSING)  
30" FIR (ORIG) S25°E 67 LKS (NOW 40" X 3 1/2' HIGH VERY ROTTED STUB IN PLACE, NO SCRIBES VISIBLE)  
16" HEMLOCK (ORIG) S45°W 16 LKS (MISSING)  
20" HEMLOCK (ORIG) N30°W 40 LKS (MISSING)  
20" HEMLOCK (1967) N29°W 29.2' (NOW 27" X 20' TALL SNAG IN PLACE, SCRIBES VISIBLE, BLM AND CHAMPION TIMBERLANDS BTT)  
20" HEMLOCK (1967) S39°E 30.6' (NOW 31" IN PLACE, SCRIBES VISIBLE, BLM AND CHAMPION TIMBERLANDS BTT)  
30" CEDAR (1967) S01°W 25.1' (NOW 40" IN PLACE, FACE CLOSED, CHAMPION TIMBERLANDS BTT, YMLP AND ELLIOTT SIGN)  
6" ALDER (1967) N80°E 13.3' (NOW 19" IN PLACE, PARTIAL SCRIBES VISIBLE, CHAMPION TIMBERLANDS BTT)  
WPCP EAST 1.0' (MISSING)  
METAL FENCE POST N10°E 1.2' (NO RECORD)

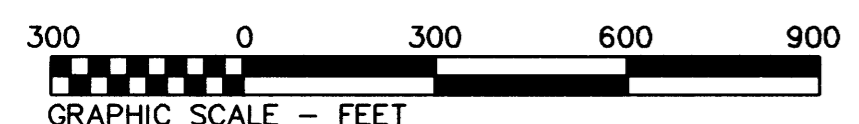
1/4 CORNER FOUND  
BLM P/C, 1967 (IN PLACE)  
18" MAPLE N50°E 28 LKS (NOW 28" X 2' HIGH STUMP IN PLACE, FACE ROTTED)  
24" FIR S08°E 56 LKS (NOW 27" IN PLACE, FACE CLOSED)  
METAL FENCE POST S74°E 2.7' TO BASE (NO RECORD)  
**REWITNESSED**  
WP S30°W 3.0' TO BASE  
WP N60°W 3.1' TO BASE

CENTER 1/4 CORNER FOUND  
OSBF P/C, 1981 (IN PLACE)  
83" MYRTLE (1981) N28°W 12.7' (NOW ROTTED WINDFALL, FACE ROTTED, YMLP)  
34" MYRTLE (1981) S70°W 27.2' (NOW 35" IN PLACE, FACE PARTIALLY CLOSED, NO SCRIBES VISIBLE)  
WPCP N60°W 2.3' (MISSING)  
5/8" IRON ROD N10°11'11"E 1.65' (IN PLACE)

NW1/4

I, JAMES M. MCINTOSH, HEREBY CERTIFY THAT THIS SURVEY WAS PREPARED USING HP CARTRIDGE NO. C4871A ON CONTINENTAL NO. JPC4M2 POLYESTER FILM.

*James M. McIntosh* DATE: 9-28-04



MAP FILE M145-50

MAP FILE M145-50