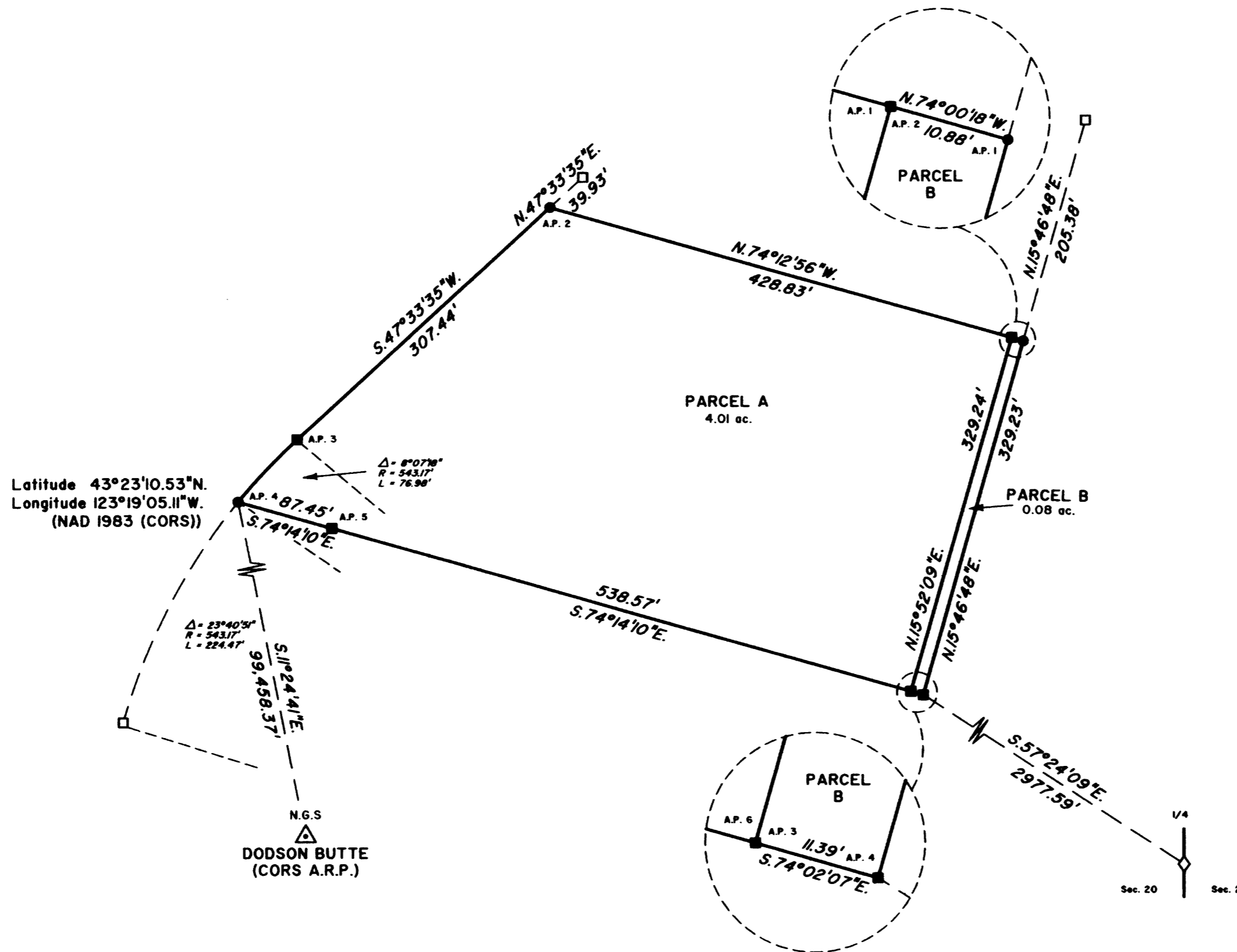
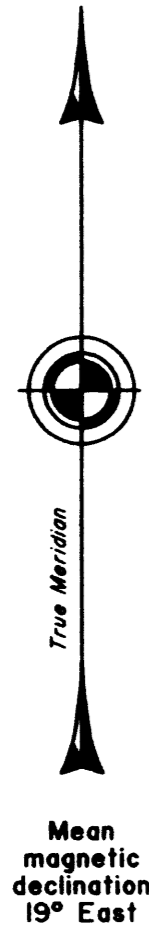


TOWNSHIP 25 SOUTH, RANGE 5 WEST, OF THE WILLAMETTE MERIDIAN, OREGON
 METES AND BOUNDS SURVEY

FILED
 Date: 7-21-2004 By: JC
 This survey consists of:
 Map: M145-4
 Narrative: Vol. 54 BLM Notes
 Corner Rpt: Rs 20790-808
 DOUGLAS COUNTY
 SURVEYOR



A history of surveys is contained in the field notes.

This plat represents a metes-and-bounds survey of Parcels A and B, in Donation Land Claim No. 52, T. 25 S., R. 5 W., Willamette Meridian, Oregon.

Measured distances and directions have been adjusted by Trimble Geomatics Office (TGO), computer software that incorporates a least squares adjustment routine. The adjusted bearings and distances are reported to the nearest second and 0.01 foot.

The survey was executed by Timothy J. Moore, Cadastral Surveyor, beginning February 23, 2004, and completed February 24, 2004, pursuant to Special Instructions dated February 17, 2004, under Group Number 2076, Oregon.

There is no timber in this area.

The tie to the geodetic control station is reported as mean bearing and sea level distance.

LEGEND

- ◇ Original corner previously remonumented
- Corner previously established or reestablished
- Corner previously established or reestablished; remonumented this survey
- Corner established or reestablished this survey

UNITED STATES DEPARTMENT OF THE INTERIOR
 BUREAU OF LAND MANAGEMENT

Portland, Oregon April 9, 2004

This plat is strictly conformable to the approved field notes, and the survey, having been correctly executed in accordance with the requirements of law and the regulations of this Bureau, is hereby accepted.

For the Director

Maury J. M. Hentel

Chief Cadastral Surveyor of Oregon



MAP FILE M145-4

MAP FILE M145-4