

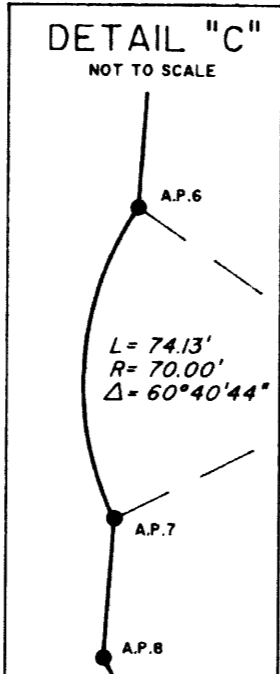
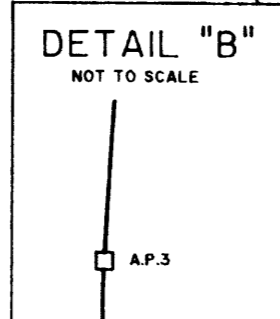
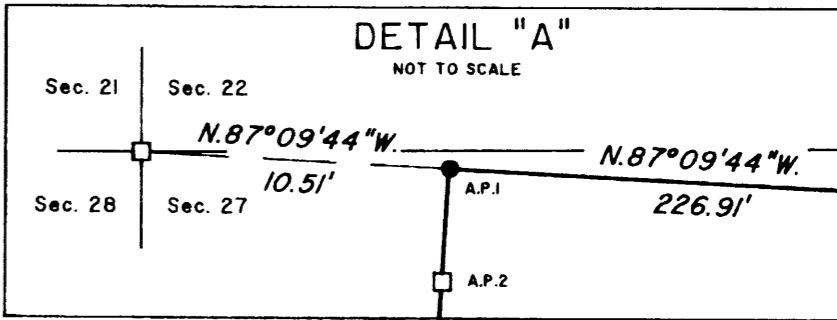
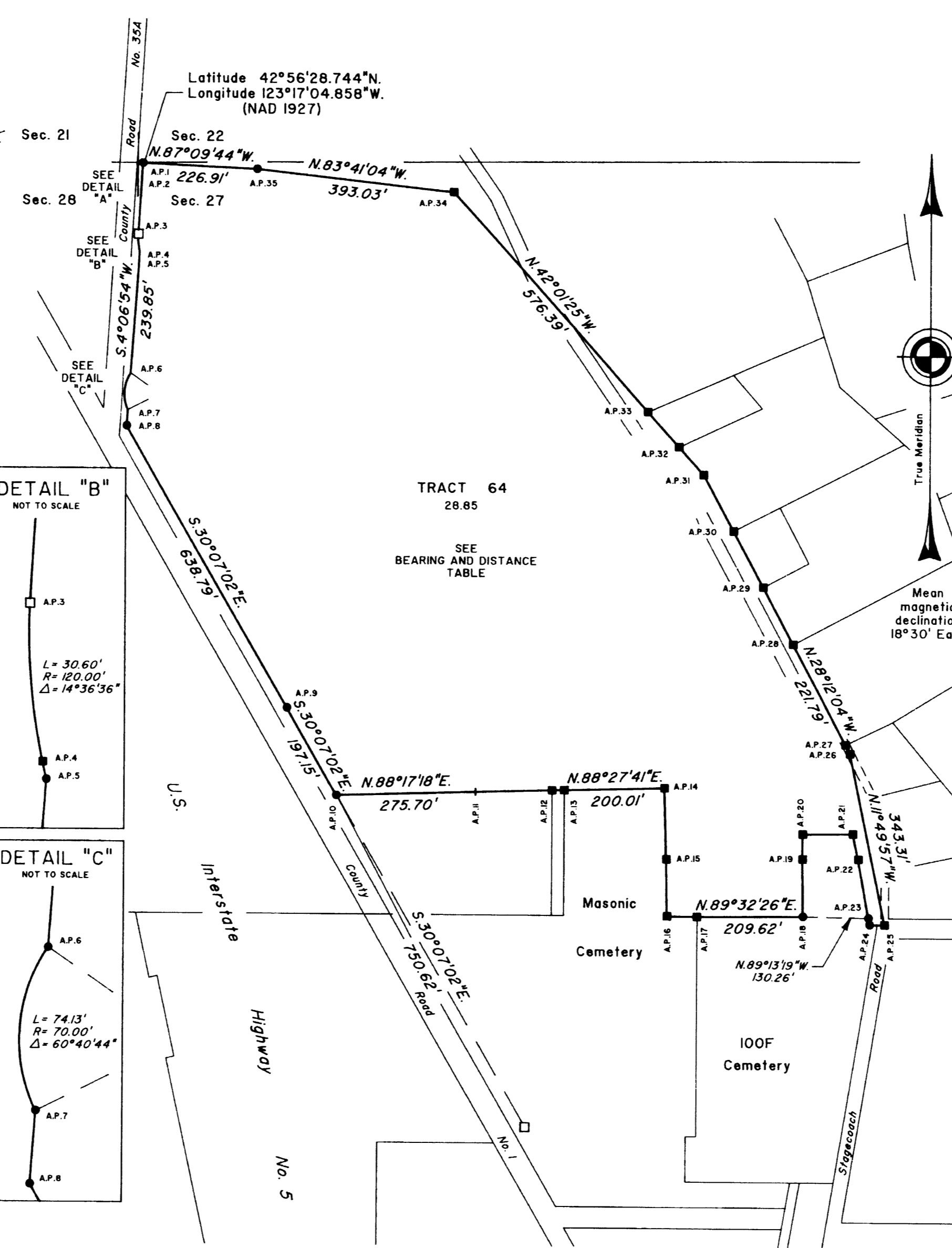
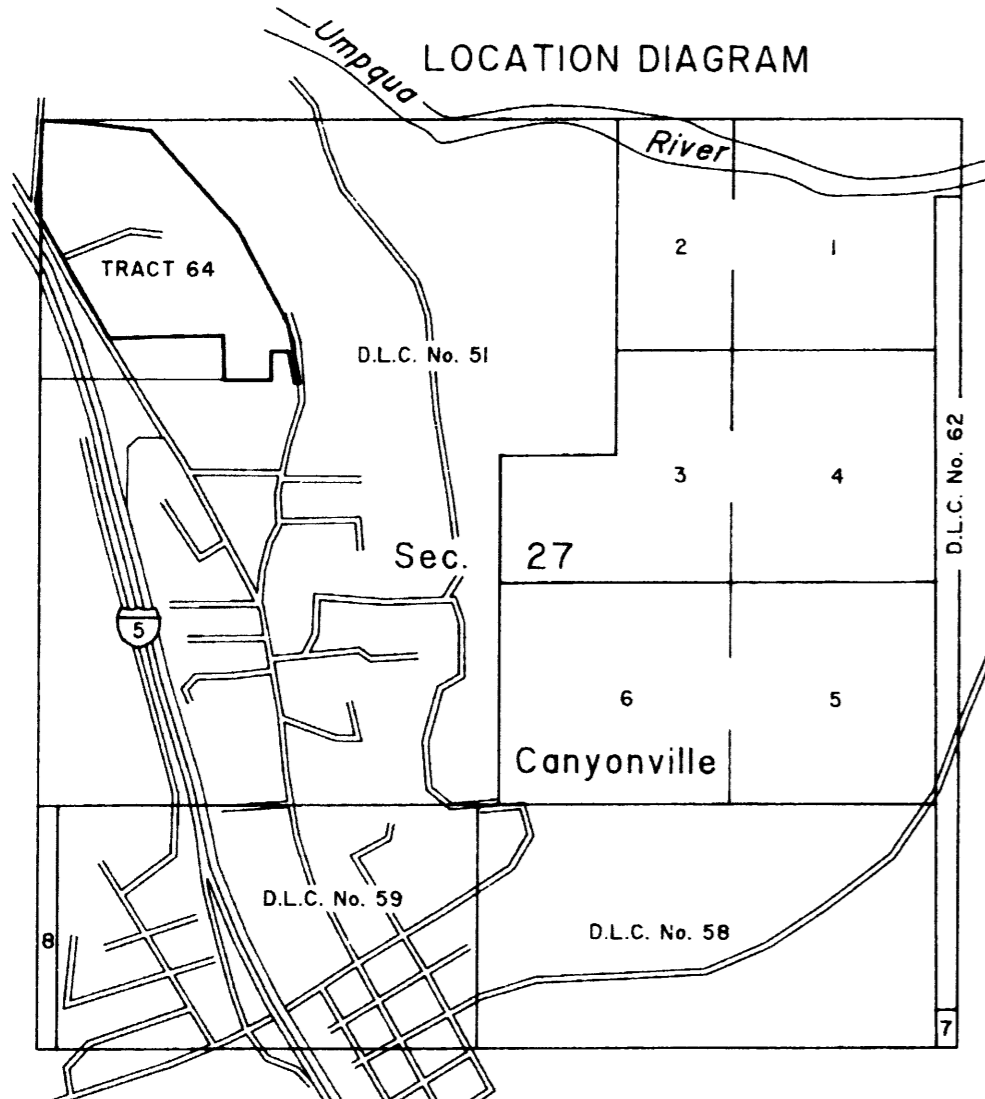
# TOWNSHIP 30 SOUTH, RANGE 5 WEST, OF THE WILLAMETTE MERIDIAN, OREGON

## SURVEY OF TRACT 64

Date: 9-17-1999 By: JF  
 This survey consists of:  
 Map: M145-3 (7-21-2004)  
 Name: Vol. 52 DM Line  
 Corner Rpt: 23 1997-88

DOUGLAS COUNTY  
SURVEYOR

MAP FILE M145-3



A history of surveys is contained in the field notes.

This plat represents a metes-and-bounds survey of Tract 64, T. 30 S., R. 5 W., Willamette Meridian, Oregon, designed to restore the corners in their true original locations according to the best available evidence.

Measured distances and directions have been adjusted by Cadastral Measurement Management (CMM), a computer program that incorporates a least squares adjustment routine. The adjusted bearings and distances are reported to the nearest second and 0.01 of a foot.

Except as shown hereon, the lottings and areas are as shown on the plat approved March 9, 1855 and March 5, 1862.

The survey was executed by Wayne L. Rogers, Cadastral Surveyor, beginning October 20, 1997, and completed July 27, 1998, pursuant to Special Instructions dated September 16, 1997, under Group Number 1866, Oregon.

There is no timber.

|      |                |         |      |                |         |
|------|----------------|---------|------|----------------|---------|
| AP1  | S. 3°33'50"W.  | 3.78'   | AP18 | N. 0°42'16"W.  | 113.04' |
| AP2  | S. 3°34'15"W.  | 137.45' | AP19 | N. 0°08'05"E.  | 49.05'  |
| AP3  | S. 12°07'12"E. | 3.42'   | AP20 | N. 89°19'27"E. | 99.77'  |
| AP4  | S. 4°06'54"W.  | 239.85' | AP21 | S. 12°17'27"E. | 51.09'  |
| AP5  | S. 4°06'54"W.  | 239.85' | AP22 | S. 10°17'05"E. | 116.99' |
| AP6  | S. 30°07'02"E. | 638.79' | AP23 | S. 10°17'05"E. | 13.44'  |
| AP7  | S. 4°06'54"W.  | 31.78'  | AP24 | S. 89°13'19"E. | 29.57'  |
| AP8  | S. 30°07'02"E. | 638.79' | AP25 | N. 11°49'57"W. | 343.31' |
| AP9  | S. 30°07'02"E. | 197.15' | AP26 | N. 28°03'51"W. | 19.86'  |
| AP10 | N. 88°17'18"E. | 275.70' | AP27 | N. 28°12'04"W. | 221.79' |
| AP11 | N. 88°25'03"E. | 151.11' | AP28 | N. 28°05'07"W. | 127.00' |
| AP12 | N. 88°29'12"E. | 24.26'  | AP29 | N. 28°17'52"W. | 124.89' |
| AP13 | N. 88°27'41"E. | 200.01' | AP30 | N. 28°12'39"W. | 125.37' |
| AP14 | S. 1°41'54"E.  | 139.76' | AP31 | N. 41°57'47"W. | 73.41'  |
| AP15 | S. 0°58'39"E.  | 112.59' | AP32 | N. 42°18'04"W. | 92.62'  |
| AP16 | S. 89°36'22"E. | 59.31'  | AP33 | N. 42°01'25"W. | 576.39' |
| AP17 | N. 89°32'26"E. | 209.62' | AP34 | N. 83°41'04"W. | 393.03' |
| AP18 | N. 89°32'26"E. | 209.62' | AP35 | N. 87°09'44"W. | 226.91' |
|      |                |         | API  | N. 87°09'44"W. | 226.91' |

|   |  |
|---|--|
| □ | Corner previously established or reestablished                           |
| ■ | Corner previously established or reestablished; remonumented this survey |
| ● | Corner established or reestablished this survey                          |

UNITED STATES DEPARTMENT OF THE INTERIOR  
BUREAU OF LAND MANAGEMENT

Portland, Oregon December 4, 1998

This plat is strictly conformable to the approved field notes, and the survey, having been correctly executed in accordance with the requirements of law and the regulations of this Bureau, is hereby accepted.

For the Director

*Wayne L. Rogers*  
Chief Cadastral Surveyor of Oregon

