

RECORD OF SURVEY  
 FOR: SENECA JONES TIMBER COMPANY AND  
 ROSEBURG RESOURCES COMPANY  
 SECTION 28, T30S, R4W, W.M.  
 DOUGLAS COUNTY, OREGON  
 7 JULY, 2004

FILED  
 Date: 8-13-2004 By: JC  
 This survey consists of:  
 Map: M145-20  
 No. \_\_\_\_\_  
 Containing \_\_\_\_\_  
 DOUGLAS COUNTY  
 SURVEYOR



NARRATIVE:

THE PURPOSE OF THIS SURVEY WAS TO SUBDIVIDE THE SW1/4 OF SECTION 28, TOWNSHIP 30 SOUTH, RANGE 4 WEST, WILLAMETTE MERIDIAN AND TO MARK THE LINES AND MONUMENT THE CORNERS AS IDENTIFIED ON THIS PLAT.

THE CONTROLLING CORNERS FOR THE SUBDIVISION OF SECTION 28 WERE TIED USING AN ASHTECH GLOBAL POSITIONING SYSTEM AND A NIKON TOTAL STATION.

NO EVIDENCE OF THE S1/4 CORNER OF SECTION 28 WAS RECOVERED. IT WAS RESET AT PROPORTIONATE POSITION HOLDING THE ORIGINAL RECOVERED LINE TREE TO THE EAST AND THE RESET SW SECTION CORNER. THE CALLED LINE TREE TO THE WEST OF THE S1/4 CORNER WAS NOT RECOVERED. THE LINE TREE TO THE EAST OF THE S1/4 CORNER WAS FOUND WITH TWO HACKS ON THE EAST FACE OF A 28" DOUGLAS FIR STUMP. A 5/8"X30" REBAR WITH 2-1/2" ALUMINUM CAP WAS SET IN THE CENTER OF THE STUMP. LOGGING ACTIVE APPROXIMATELY TWELVE YEARS PRIOR HAD DISTURBED THE POSITION OF THE RECORD IRON PIPE MARKING THE SW SECTION CORNER. THE PIPE WAS FOUND BENT AND LOOSE IN THE GROUND AND NOT MATCHING RECORD BEARING OR DISTANCE TO ANY OF THE EXISTING ACCESSORIES. A 5/8"X30" REBAR WITH 2-1/2" ALUMINUM CAP WAS SET BY DISTANCE-DISTANCE INTERSECTION FROM THE TWO NEAREST REMAINING ACCESSORIES.

LINE REFERRED TO AS POSTED WAS MARKED WITH RED FLAGGING RED PAINTED BLAZES AND 5-1/2 FT. GALVANIZED STEEL POSTS.

THE BASIS OF BEARING FOR THIS SURVEY WAS THE RECORD FOR THE SOUTH HALF MILE ON THE EAST LINE OF SECTION 28 AS RETRACED BY THE BUREAU OF LAND MANAGEMENT IN 1999 AND RECORDED IN 2002.

(A)  
 1/4 CORNER S28, S29  
 FOUND: 2-3/8" BRASS CAP ON 1-3/8" IRON PIPE DATED 1997 WITH THE FOLLOWING ACCESSORIES:  
 13" D. FIR BEARS N49-1/2°W, 8.8' (HEALED FACE)  
 7" D. FIR BEARS S 71-1/2°E, 11.1' (OPEN FACE)  
 27" D. FIR BEARS S10°W, 38.0' (BARK SCRIBING VISIBLE)  
 30" D. FIR SNAG BEARS S84°W, 35.0' (OPEN BLAZE)  
 19" D. FIR BEARS N2°E, 23.7' (HEALED FACE)

(B)  
 S1/16 S28, S29  
 SET: 5/8" X 30" REBAR WITH 2-1/2" ALUMINUM CAP MARKED AS SHOWN WITH THE FOLLOWING ACCESSORIES:  
 20" D. FIR BEARS S64°E, 11.1' (BLAZED AND SCRIBED "S1/16 S28 BT")  
 19" D. FIR BEARS S72°W, 20.9' (BLAZED AND SCRIBED "S1/16 S29 BT")

(C)  
 SECTION CORNER S28, S29, S32, S33  
 FOUND: 1-1/2" IRON PIPE OUT OF POSITION WITH ADJACENT POST

SET: 5/8" X 30" REBAR WITH 2-1/2" ALUMINUM CAP MARKED AS SHOWN WITH THE FOLLOWING ACCESSORIES:  
 42" FIR STUMP BEARS N79-1/2°E, 93.3' (RECORD 89.8.) (HEALED FACE)  
 10" D. FIR STUMP BEARS N75-1/2°E, (RECORD N47°E) 6.5' (HEALED FACE WITH METAL CAP ON STUMP)  
 17" D. FIR STUMP BEARS S44°E, (RECORD S31°E) 9.7' (HEALED FACE WITH METAL CAP ON STUMP)

(D)  
 W1/16 SOUTH LINE S28  
 SET: 5/8" X 30" REBAR WITH 2-1/2" ALUMINUM CAP MARKED AS SHOWN WITH THE FOLLOWING ACCESSORIES:  
 19" D. FIR BEARS S11°E, 12.6' (BLAZED AND SCRIBED "W1/16 S33 BT")  
 8" D. FIR BEARS N74°W, 8.5' (BLAZED AND SCRIBED "W1/16 S28 BT")

(E)  
 SW1/16 S28  
 SET: 5/8" X 30" REBAR WITH 2-1/2" ALUMINUM CAP MARKED AS SHOWN WITH THE FOLLOWING ACCESSORIES:  
 34" D. FIR S21°W, 29.9' (BLAZED AND SCRIBED "SW1/16 S28 BT")  
 20" D. FIR N17°W, 8.7' (BLAZED AND SCRIBED "SW1/16 S28 BT")

(F)  
 1/4 S21, S28  
 FOUND: 3" B.L.M. BRASS CAP DATED 1995 WITH ACCESSORIES WITH THE FOLLOWING ACCESSORIES:  
 23" OAK BEAR N67-1/4°W 108.2' (HEALED FACE)  
 STEEL FENCE POST BEARS N45°E 3.3'

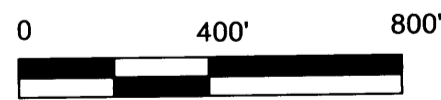
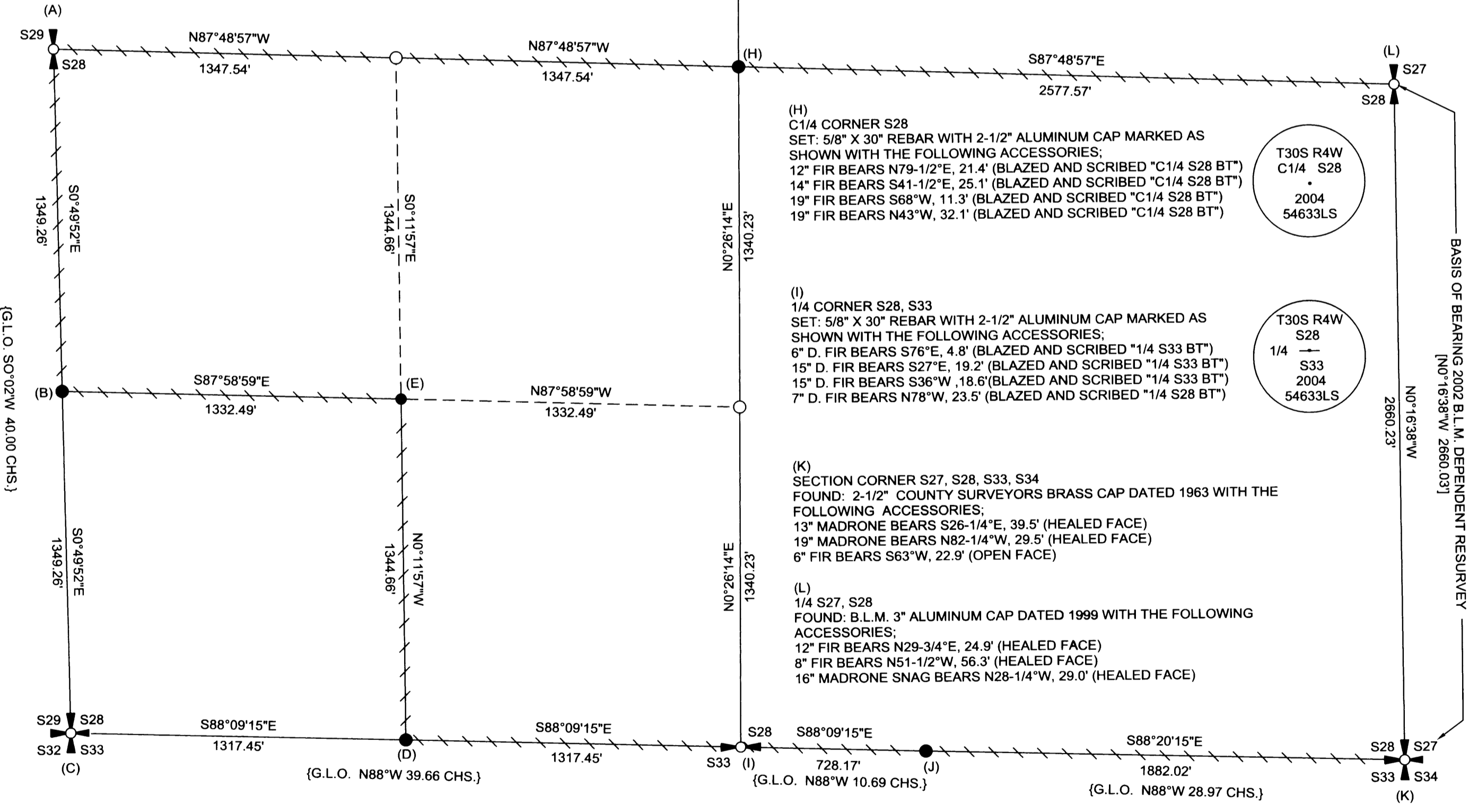
(J)  
 LINE TREE S28, S33  
 FOUND: 30" D. FIR STUMP WITH TWO HACK MARKS ON EAST SIDE  
 SET: 5/8" X 30" REBAR IN CENTER OF STUMP WITH 2-1/2" ALUMINUM CAP MARKED AS SHOWN WITH THE FOLLOWING ACCESSORIES:  
 18" D. FIR BEARS N20°E, 14.3' (BLAZED AND SCRIBED "AP S28 BT")  
 15" D. FIR BEARS S65°E, 5.0' (BLAZED AND SCRIBED "AP S33 BT")

(H)  
 C1/4 CORNER S28  
 SET: 5/8" X 30" REBAR WITH 2-1/2" ALUMINUM CAP MARKED AS SHOWN WITH THE FOLLOWING ACCESSORIES:  
 12" FIR BEARS N79-1/2°E, 21.4' (BLAZED AND SCRIBED "C1/4 S28 BT")  
 14" FIR BEARS S41-1/2°E, 25.1' (BLAZED AND SCRIBED "C1/4 S28 BT")  
 19" FIR BEARS S68°W, 11.3' (BLAZED AND SCRIBED "C1/4 S28 BT")  
 19" FIR BEARS N43°W, 32.1' (BLAZED AND SCRIBED "C1/4 S28 BT")

(I)  
 1/4 CORNER S28, S33  
 SET: 5/8" X 30" REBAR WITH 2-1/2" ALUMINUM CAP MARKED AS SHOWN WITH THE FOLLOWING ACCESSORIES:  
 6" D. FIR BEARS S76°E, 4.8' (BLAZED AND SCRIBED "1/4 S33 BT")  
 15" D. FIR BEARS S27°E, 19.2' (BLAZED AND SCRIBED "1/4 S33 BT")  
 15" D. FIR BEARS S36°W, 18.6' (BLAZED AND SCRIBED "1/4 S33 BT")  
 7" D. FIR BEARS N78°W, 23.5' (BLAZED AND SCRIBED "1/4 S28 BT")

(K)  
 SECTION CORNER S27, S28, S33, S34  
 FOUND: 2-1/2" COUNTY SURVEYORS BRASS CAP DATED 1963 WITH THE FOLLOWING ACCESSORIES:  
 13" MADRONE BEARS S26-1/4°E, 39.5' (HEALED FACE)  
 19" MADRONE BEARS N82-1/4°W, 29.5' (HEALED FACE)  
 6" FIR BEARS S63°W, 22.9' (OPEN FACE)

(L)  
 1/4 S27, S28  
 FOUND: B.L.M. 3" ALUMINUM CAP DATED 1999 WITH THE FOLLOWING ACCESSORIES:  
 12" FIR BEARS N29-3/4°E, 24.9' (HEALED FACE)  
 8" FIR BEARS N51-1/2°W, 56.3' (HEALED FACE)  
 16" MADRONE SNAG BEARS N28-1/4°W, 29.0' (HEALED FACE)



LEGEND

- CALCULATED POSITION
- ⊕ QUARTER CORNER AS NOTED
- ⊕ SECTION CORNER AS NOTED
- POSTED LINE AS DEFINED IN NARRATIVE
- { } 1889 G.L.O. RECORD DATA
- [ ] 2002 B.L.M. DEPENDENT RESURVEY RECORD DATA
- SET MONUMENT AS NOTED

REGISTERED PROFESSIONAL LAND SURVEYOR  
*Ronald L. Rice*  
 OREGON  
 JULY 9, 2002  
 RONALD L. RICE  
 54633LS  
 EXPIRES: 12-31-2004

Ward NorthWest, Inc.  
 P.O. BOX 105 FLORENCE, OR 97439  
 (541) 997-9201 FAX: 541-997-3546

FILE NAME	DATE	DRAWN BY
04-16.TRV	7-7-2004	BRP
SCALE	REVISION	SHEET
400 Ft/In	---	1/1
JOB	---	---
04-16	---	---