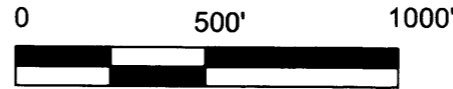


RECORD OF SURVEY  
 FOR: SENECA JONES TIMBER COMPANY  
 SECTION 32 T31S, R4W, W.M.  
 DOUGLAS COUNTY, OREGON  
 15, FEBRUARY 2004



**FILED**  
 Date: 3/22/2004 By: JP  
 This survey consists of:  
 Map: M144-9  
 Narrative:  
 Corner Rpt:  
**DOUGLAS COUNTY SURVEYOR**

(A)  
 1/4 CORNER S31, S32  
 FOUND: COUNTY SURVEYOR 2-1/2" BRASS CAP DATED 1966 WITH THE FOLLOWING ACCESSORIES;  
 46" D. FIR BEARS N35°E 26.4' -HEALED FACE  
 19" MADRONE BEARS N2°E 47.7' -BARK SCRIBED  
 10" D. FIR BEARS S67°W 24.3' -HEALED FACE

(B)  
 N1/16 S31, S32  
 FOUND: 1-1/2" ALUMINUM CAP ON 5/8" REBAR WITH THE FOLLOWING ACCESSORIES;  
 42" D. FIR BEARS S35°W 35.0' -OPEN FACE  
 32" D. FIR STUMP BEARS N40°E 15.2' -OPEN FACE

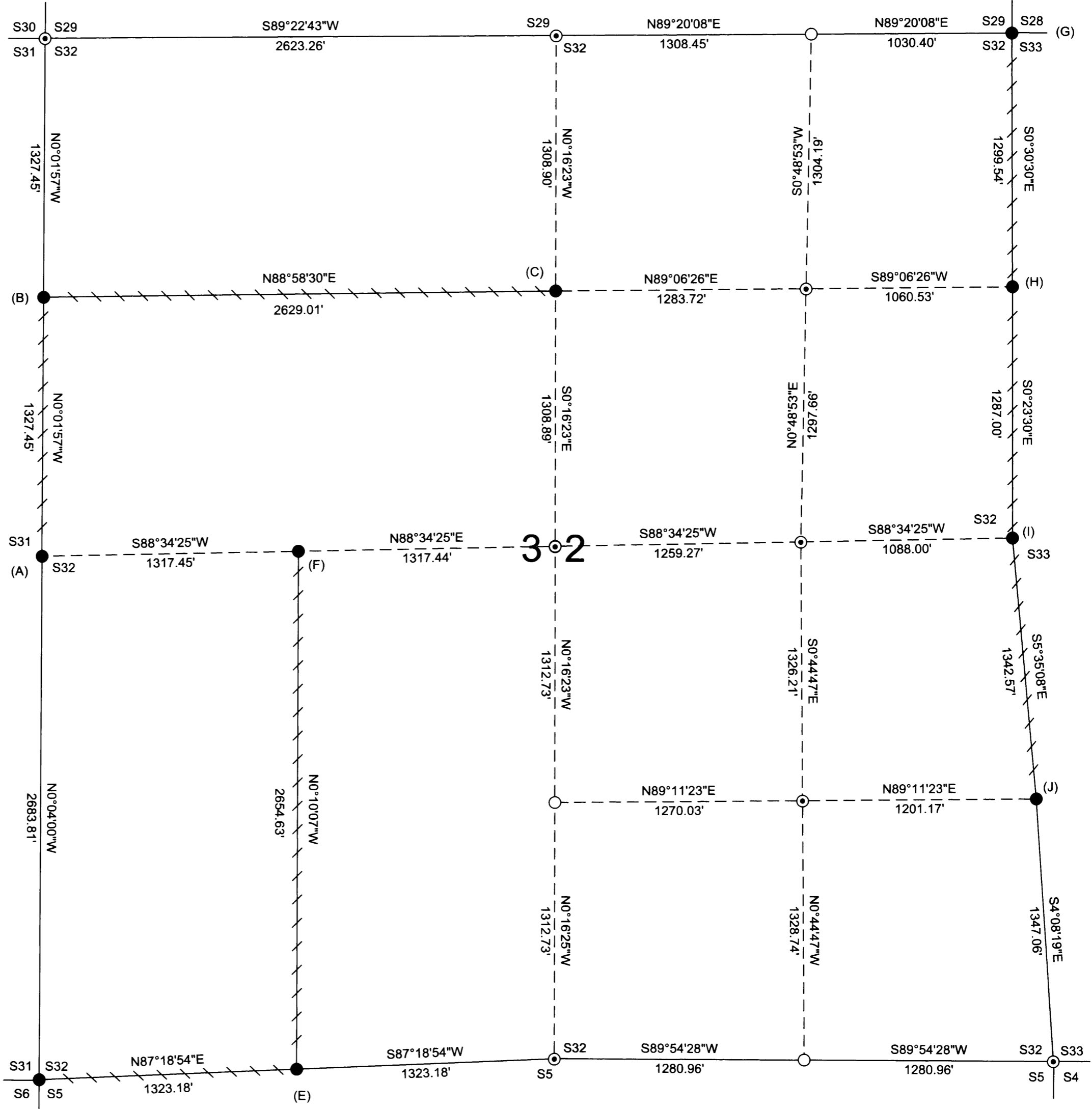
(C)  
 CN1/16 S32  
 FOUND: 1-1/2" ALUMINUM CAP ON 5/8" REBAR WITH THE FOLLOWING ACCESSORIES;  
 11" D. FIR BEARS S46°W 17.5' -HEALED FACE  
 12" D. FIR STUMP BEARS N58°E 12.6' -VISIBLE SCRIBING

(D)  
 SECTION CORNER S31, S32, T31S, R4W  
 S5, S6, T32S, R4W  
 FOUND: 3" BLM BRASS CAP DATED 1959 WITH THE FOLLOWING ACCESSORIES;  
 36" ROTTED FIR STUMP BEARS N52°E 19.1' -NO VISIBLE MARKS  
 10" CHINQUAPIN SNAG BEARS N45°E 42.9' -HEALED FACE  
 9" MADRONE BEARS S51°E 23.1' -HEALED FACE  
 8" MADRONE BEARS S33°W 27.1' -VISIBLE SCRIBING  
 13" CHINQUAPIN (RECORD MADRONE) BEARS N35°W 9.2' -HEALED FACE

(E)  
 W1/16 S32, S5  
 FOUND: 1-1/2" ALUMINUM CAP ON 5/8" REBAR WITH THE FOLLOWING ACCESSORIES;  
 15" D. FIR BEARS S15°E 6.7' -HEALED FACE  
 19" D. FIR BEARS N10°E 15.4' -HEALED FACE

(F)  
 CW1/16 S32  
 FOUND: 1-1/2" ALUMINUM CAP ON 5/8" REBAR WITH THE FOLLOWING ACCESSORIES;  
 22" D. FIR BEARS S37°W 10.0' -OPEN FACE  
 10" D. FIR BEARS N4°W 14.8' -OPEN FACE

(G)  
 CORNER, S28, S29, S32, S33  
 FOUND: 2-1/2" COUNTY SURVEYOR'S CAP ON 1" PIPE WITH THE FOLLOWING ACCESSORIES;  
 21" D. FIR BEARS N15°E, 22.4' -HEALED FACE  
 17" D. FIR BEARS N42°W, 5.3' -VISIBLE SCRIBING  
 19" FIR STUMP BEARS S53-3/4°W, 13.9' -NO VISIBLE MARKS  
 42" D. FIR BEARS S12°E, 34.0' -HEALED FACE  
 23" D. FIR BEARS S67-1/2°W, 10.6' -HEALED FACE



(H)  
 N1/16 S32, S33  
 FOUND: 3-1/4" B.L.M. BRASS CAP ON IRON PIPE WITH THE FOLLOWING ACCESSORIES;  
 19" FIR BEARS N22°E, 3.3' -HEALED FACE  
 21" FIR BEARS S13-3/4°W, 9.2' -HEALED FACE

(I)  
 1/4 S32, S33  
 FOUND: 3-1/4" B.L.M. BRASS CAP ON 2-1/2" IRON PIPE WITH THE FOLLOWING ACCESSORIES;  
 24" FIR STUMP N62°W, 83.2' -VISIBLE SCRIBING  
 22" D. FIR BEARS S17-1/4°E, 4.6' -HEALED FACE  
 21" D. FIR BEARS N87-3/4°W, 23.8' -HEALED FACE

(J)  
 S1/16 S32, S33  
 FOUND: 3-1/4" B.L.M. BRASS CAP ON 2-1/2" IRON PIPE WITH THE FOLLOWING ACCESSORIES;  
 25" D. FIR BEARS N34°E, 15.5' -HEALED FACE  
 36" D. FIR BEARS S21-1/4°W, 37.6' -HEALED FACE

**NARRATIVE:**  
 THE PURPOSE OF THIS PLAT IS TO SHOW THE LINES WHICH WERE MARKED IN THE FOLLOWING MANNER. RED PAINTED BLAZES, RED FLAGGING AND 5-1/2" GALVANIZED STEEL POSTS. NO CORNERS WERE SET AS A RESULT OF THIS SURVEY.

A SUBDIVISION OF SECTION 32 WAS PERFORMED IN 1996 BY BRUCE SHANER AND RECORDED AS DOUGLAS COUNTY SURVEY FILE RM 4-3. CORNERS SHOWN IN THIS SURVEY WERE HELD IN THEIR AS-TIED POSITION FOR CONTROL OF POSTED LINE. SURVEY DATA SHOWN ON THIS PLAT IS RECORD RM 4-3.

THE 1893 GENERAL LAND OFFICE SURVEY CALLS A 72" FIR LINE TREE 7.4 CHAINS NORTH OF THE WEST 1/4 CORNER OF SECTION 32. THIS TREE WAS SEARCHED FOR AND FOUND AT NEAR RECORD POSITION, BUT WITH NO VISIBLE MARKS. WITHOUT VISIBLE MARKS IT WAS NOT HELD FOR CONTROL AND SHANER'S N1/16 ON THE WEST LINE OF SECTION 32 WAS HELD IN ITS AS-TIED POSITION.

THE BASIS OF BEARING FOR THIS SURVEY WAS THE RM 4-3 RECORD FOR EACH LINE SEGMENT POSTED BETWEEN EXISTING CORNER MONUMENTS.

THIS SURVEY WAS PERFORMED USING A NIKON TOTAL STATION.

**LEGEND**

- COMPUTED POSITION PER COUNTY SURVEY FILE RM 4-3
- MONUMENTED OF RECORD AS NOTED
- ⊙ MONUMENT OF RECORD PER DOUGLAS COUNTY SURVEY FILE RM 4-3 NOT TIED THIS SURVEY
- POSTED LINE

REGISTERED PROFESSIONAL LAND SURVEYOR  
*Ronald L. Rice*  
 OREGON  
 JULY 9, 2002  
 RONALD L. RICE  
 54633LS  
 EXPIRES: 12-31-2004

**Ward NorthWest, Inc.**  
 P.O. BOX 105 FLORENCE, OR 97439  
 (541) 997-9201 FAX: 541-997-3546

|           |          |          |
|-----------|----------|----------|
| FILE NAME |          |          |
| 04-02.TRV |          |          |
| SCALE     | DATE     | DRAWN BY |
| 500 F/In  | 2-15-04  | RLR      |
| JOB       | REVISION | SHEET    |
| 04-02     | -----    | 1/1      |

This map drawn with TRAVERSE PC Software