

# LONE ROCK TIMBER MANAGEMENT COMPANY

PO BOX 1127 ROSEBURG, OREGON 97470  
 TOWNSHIP 29 SOUTH, RANGE 5 WEST, W.M. SECTIONS 26

SURVEY: BRYANT TRACT  
 OWNER: LONE ROCK TIMBERLAND CO.

DOUGLAS COUNTY, OREGON  
 DATE: MAY 2004 SCALE: 1" = 400'

FILED

PAGE 2

Date: 7-7-2004 By: XC  
 This survey consists of:  
 Map: M144-71A & B  
 Narrative:  
 Corner Rpt:

DOUGLAS COUNTY  
 SURVEYOR

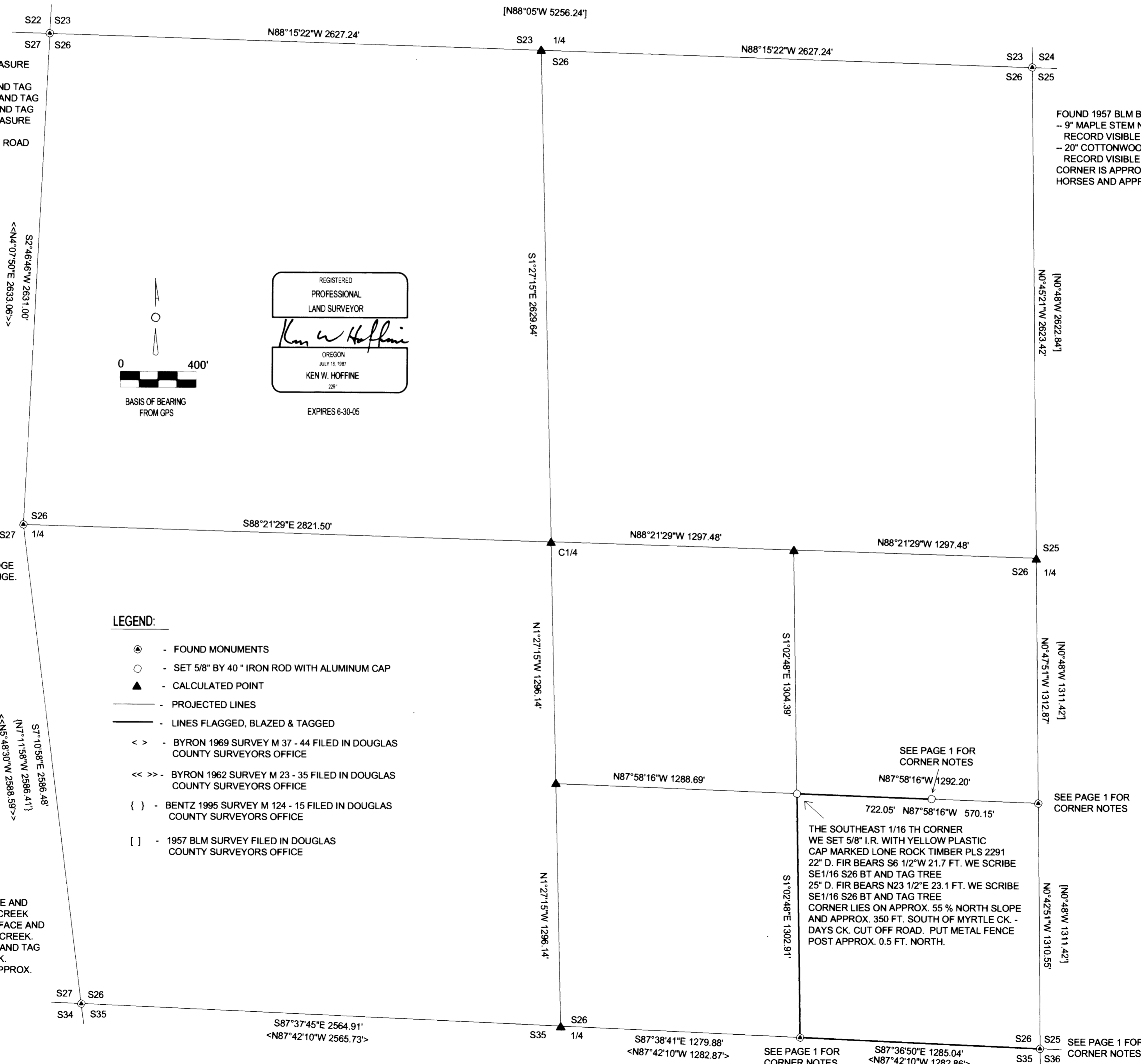
MAP FILE M144-71B

FOUND 1957 BLM BRASS CAP  
 - 3/4" IRON PIPE BEARS N6°W 3.08 FT. AS PER RECORD  
 - 24" OAK BEARS N6°W 231.5 FT. AS PER RECORD DID NOT MEASURE OPEN FACE TO HEART OF TREE.  
 - 24" OAK BEARS N58°E 70.1 FT. AS PER RECORD HEALED FACE AND TAG  
 - 22" OAK BEARS S13°W 100.0 FT. AS PER RECORD HEALED FACE AND TAG  
 - 18" OAK BEARS S36°W 51.4 FT. AS PER RECORD HEALED FACE AND TAG  
 - 22" OAK BEARS N151/2°W 140.6 FT. AS PER RECORD DID NOT MEASURE HEALED FACE AND TAG  
 CORNER LIES APPROX. 40 FT. SOUTH OF SOUTH MYRTLE COUNTY ROAD AND APPROX. 25 FT. WEST OF NORTH - SOUTH FENCE LINE.

FOUND 1957 BLM BRASS CAP  
 - 9" MAPLE STEM NOW DEAD BEARS N14 3/4°W 59.4 FT. AS PER RECORD VISIBLE SCRIBING AND TAG.  
 - 20" COTTONWOOD STUMP BEARS N19°E 100.32 FT. AS PER RECORD VISIBLE SCRIBING.  
 CORNER IS APPROX. 1.5 FT. BELOW GROUND LEVEL IN FIELD WITH HORSES AND APPROX. 40 FT. SOUTHEASTERLY OF DRIVEWAY.

FOUND 1962 DOUGLAS COUNTY CAP  
 - 22" OAK BEARS S53°E 153.6 FT. AS PER RECORD, HEALED FACE CORNER IS APPROX. 2.5 FT. BELOW GROUND LEVEL AT UPPER EDGE OF MOWED AREA OF MYRTLE CREEK GOLF COURSE DRIVING RANGE.

FOUND 1963 DOUGLAS COUNTY CAP  
 5" MYRTLE BEARS S14°E 75.4 FT. AS PER RECORD HEALED FACE AND TAG. TREE IS ON TOP OF NORTH BANK OF SOUTH MYRTLE CREEK  
 14" MAPLE BEARS S151/2°W 102.1 FT. AS PER RECORD HEALED FACE AND TAG. TREE IS ON TOP OF NORTH BANK OF SOUTH MYRTLE CREEK.  
 30" OAK BEARS N71°E 124.0 FT. AS PER RECORD ROTTEN FACE AND TAG TREE IS ON TOP OF NORTH BANK OF SOUTH MYRTLE CREEK.  
 CORNER LIES IN GOLF COURSE 0.3 FT. BELOW GROUND AND APPROX. 18 FT. NORTHERLY OF PAVED GOLF CART PATH.



**LEGEND:**

- ⊙ - FOUND MONUMENTS
- - SET 5/8" BY 40" IRON ROD WITH ALUMINUM CAP
- ▲ - CALCULATED POINT
- - PROJECTED LINES
- - LINES FLAGGED, BLAZED & TAGGED
- < > - BYRON 1969 SURVEY M 37 - 44 FILED IN DOUGLAS COUNTY SURVEYORS OFFICE
- << >> - BYRON 1962 SURVEY M 23 - 35 FILED IN DOUGLAS COUNTY SURVEYORS OFFICE
- { } - BENTZ 1995 SURVEY M 124 - 15 FILED IN DOUGLAS COUNTY SURVEYORS OFFICE
- [ ] - 1957 BLM SURVEY FILED IN DOUGLAS COUNTY SURVEYORS OFFICE

MAP FILE M144-71B