

PROPERTY SURVEY
 FOR: SENECA JONES TIMBER COMPANY
 SECTION 9, T22S, R5W, W.M.
 DOUGLAS COUNTY, OREGON
 27, APRIL 2004

NARRATIVE

THE PURPOSE OF THIS SURVEY WAS TO RETRACE A PORTION OF DOUGLAS COUNTY SURVEY FILES M92-31 AND M95-15. AS A RESULT OF THIS SURVEY 3 CORNERS LABELED ON THIS PLAT AS {A}, {B}, {C} WERE FOUND EITHER MISSING OR IN A DISTURBED POSITION AND RESET. LINES IDENTIFIED AS POSTED ON THIS PLAT WERE MARKED BY RED PAINTED BLAZES, RED FLAGGING AND 5-1/2' GALVANIZED STEEL POSTS.

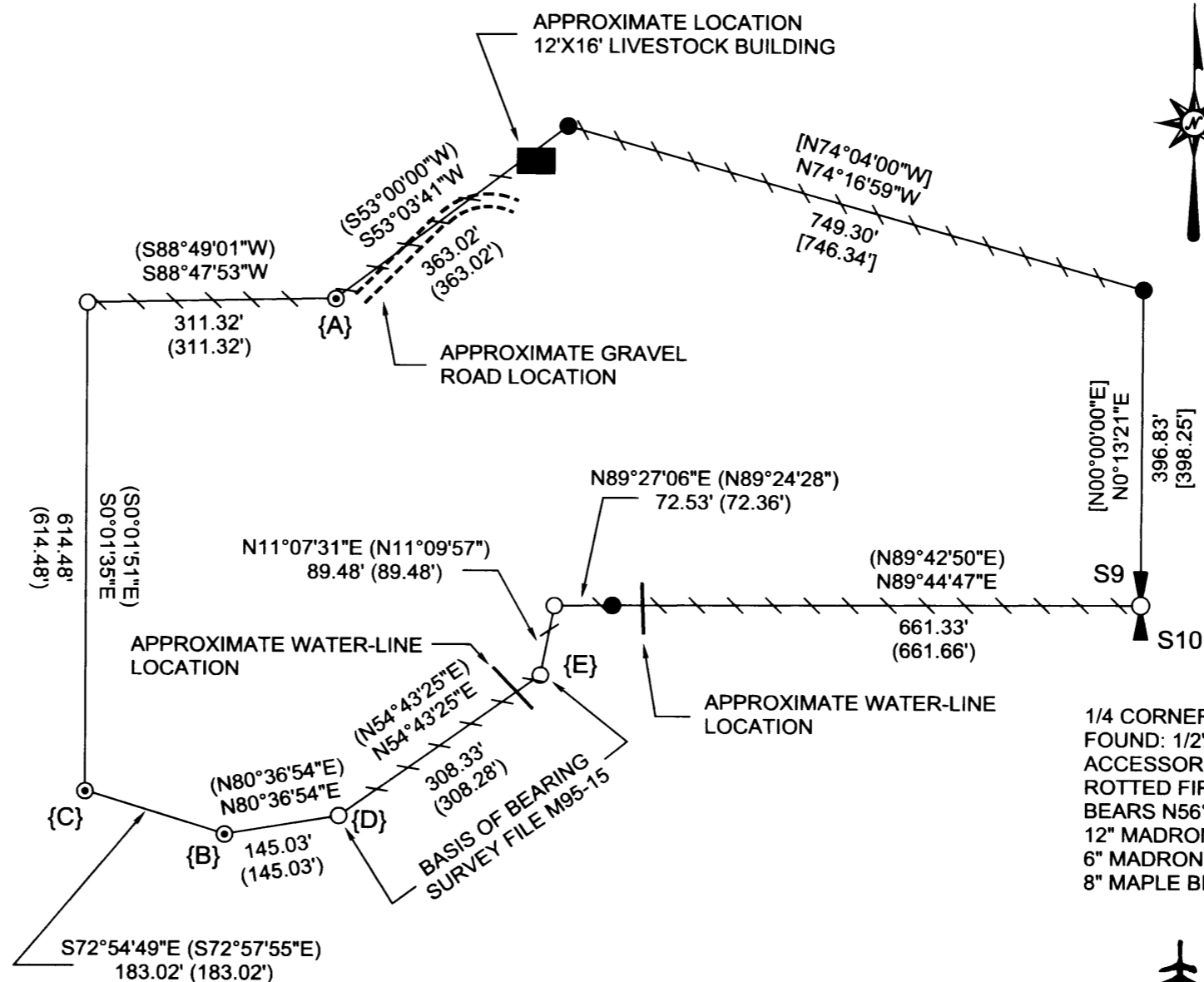
CORNER {A} WAS SET BY M95-15 RECORD DISTANCE, DISTANCE INTERSECTION FROM AS-TIED EXISTING MONUMENTS. CORNER {B} WAS SET BY M95-15 RECORD BEARING AND DISTANCE. CORNER {C} WAS SET BY M95-15 RECORD DISTANCE, DISTANCE INTERSECTION, HOLDING THE RESET POSITION FOR {B}.

THE BASIS OF BEARING FOR THIS SURVEY WAS THE PLAT RECORD FROM DOUGLAS COUNTY SURVEY FILE M95-15 BETWEEN CORNERS IDENTIFIED ON THIS PLAT AS {D} AND {E}.

THIS SURVEY WAS PERFORMED USING A NIKON TOTAL STATION.

LEGEND

- FOUND 5/8" REBAR WITH YELLOW PLASTIC CAP MARKED "BENTZ SURVEY LS839"
- FOUND 5/8" IRON REBAR WITH 1-1/16" BRASS DISC PER M92-31
- ⊙ SET 5/8" X 30" REBAR WITH YELLOW PLASTIC CAP MARKED "LS54633"
- ⊙ QUARTER CORNER AS NOTED
- POSTED LINE MARKED WITH RED FLAGGING, RED PAINTED BLAZES AND 5-1/2' GALVANIZED STEEL POSTS
- () RECORD DATA PER DOUGLAS COUNTY SURVEY FILE M95-15
- [] RECORD DATA PER DOUGLAS COUNTY SURVEY FILE M92-31



1/4 CORNER S9,S10
 FOUND: 1/2" BENT EYEBOLT WITH THE FOLLOWING ACCESSORIES:
 ROTTED FIR SNAG OF INDETERMINATE DIAMETER, BEARS N56°W, 16.5' (NO FACE)
 12" MADRONE BEARS S49°E, 9.2' (SCRIBING VISIBLE)
 6" MADRONE BEARS N06°E, 22.2' (SCRIBING VISIBLE)
 8" MAPLE BEARS S06°W, 67.6' (SCRIBING VISIBLE)

REGISTERED PROFESSIONAL LAND SURVEYOR
Ronald L. Rice
 OREGON
 JULY 9, 2002
 RONALD L. RICE
 54633LS
 EXPIRES: 12-31-2004

Ward NorthWest, Inc.
 P.O. BOX 105 FLORENCE, OR 97439
 (541) 997-9201 FAX: 541-997-3546

FILE NAME		
04-20.TRV		
SCALE	DATE	DRAWN BY
200 Ft/In	4-27-2004	BRP
JOB	REVISION	SHEET
04-20	---	1/1

This map drawn with TRAVERSE PC Software

MAP FILE M144-52

MAP FILE M144-52

FILED

Date: 5/25/2004 By: NW
 This survey consists of:
 Map: M144-52
 Narrative: _____
 Corner Rpt: _____

DOUGLAS COUNTY SURVEYOR