

PURPOSE

TO MARK PROPERTY LINES THAT SEPARATE STATE FOREST LANDS AND PRIVATE LANDS LOCATED IN SECTION 24, TOWNSHIP 23 SOUTH, RANGE 10 WEST, WILLAMETTE MERIDIAN.

PROCEDURE

A RANDOM TRAVERSE, USING A LEICA TPS 1101 TOTAL STATION WAS USED TO CONNECT CONTROLLING CORNERS. BEARING AND DISTANCE WERE COMPUTED AND OFFSETS CALCULATED TO POINTS ON TRUELINE FOR CARSONITE BOUNDARY MARKERS. ALL CORNER ACCESSORIES WERE MARKED AS OUTLINED IN THE "MANUAL OF INSTRUCTIONS FOR SURVEY OF THE PUBLIC LANDS OF THE U.S." 1973. DISTANCES WERE MEASURED TO AN ALUMINUM NAIL IN BT FACE. FOR A DETAILED REPORT ON FOUND CORNERS SEE COUNTY RECORDS.

THE AREA AROUND THE ONE-QUARTER CORNER COMMON TO SECTIONS 24 AND 25 HAS BEEN ADVERSELY AFFECTED BY THE EROSION ACTION OF LAKE CREEK. PREVIOUS SURVEYS REPORTED THAT THE POSITION OF THE ONE-QUARTER CORNER COMMON TO SECTIONS 24 AND 25 IS NOW LOCATED IN LAKE CREEK. CONTINUED EROSION ACTION OF LAKE CREEK HAS OBLITERATED THE WITNESS CORNER ESTABLISHED BY ARNOLD G. GIBSON IN 1972 (SURVEY NO. M47-1) AND THE 5/8-INCH IRON ROD SET BY LLOYD D. SMITH IN 1981 (SURVEY NO. M89-40) MONUMENTING THE CENTER OF THE ROOT CROWN OF THE JAMES W. BYRON 1957 MYRTLE BEARING TREE (COUNTY SURVEY FILE 49/60). WILLIAM RUPPERT'S WITNESS CORNER (SURVEY NO. 87-80), FOUND IN PLACE, WAS USED TO CALCULATE THE POSITION OF THE ONE-QUARTER CORNER COMMON TO SECTIONS 24 AND 25 BASED ON RECORD BEARING AND DISTANCE IN THE 1981 SURVEY BY LLOYD D. SMITH (SURVEY M89-40).

THE 1981 SURVEY BY LLOYD D. SMITH (SURVEY NO. M89-76) ESTABLISHED PROPERTY CORNERS CONSISTING OF 5/8" IRON RODS FOR THE PURPOSE OF SEPARATING STATE LANDS FROM A PRIVATELY OWNED PARCEL LOCATED IN THE SOUTHEAST CORNER OF SECTION 24. DEEDS REFERENCED IN THAT SURVEY ARE AS FOLLOWS: VOLUME 298 PAGE 116 AND VOLUME 471 PAGE 630, DOUGLAS COUNTY, RECORD OF DEEDS. THE PROPERTY CORNER SET ON THE SECTION LINE BETWEEN SECTIONS 24 AND 25 OF THE ABOVE PARCEL WAS FOUND OUT OF PLACE. I REESTABLISHED THIS CORNER BY PROPORTIONATE DISTANCE BETWEEN THE SOUTHEAST SECTION CORNER COMMON TO SECTIONS 19, 30, 24 AND 25 AND THE ONE-QUARTER CORNER COMMON TO SECTIONS 24 AND 25.

BASIS OF BEARING

LLOYD D. SMITH 1981 SURVEY (COUNTY SURVEY NO. M89-40) FROM THE SECTION CORNER OF SECTIONS 19, 30, 24 AND 25, TOWNSHIP 23 SOUTH, RANGE 9 AND 10 WEST, TO THE ONE QUARTER CORNER OF SECTIONS 24 AND 25, TOWNSHIP 23 SOUTH, RANGE 10 WEST, WILLAMETTE MERIDIAN.

SECTION CORNER FOUND

- OSBF P/C, 1967 (IN PLACE)
24" FIR (1879) N60°E 20 LKS (NOW 12" X 2' HIGH
ROTTED STUB IN PLACE, NO MARKS VISIBLE)
72" FIR (1879) S45°E 5 LKS (NOW 53" X 2' HIGH
ROTTED STUMP IN PLACE, NO MARKS VISIBLE)
13" FIR (1967) N26°E 34.2' (NOW 15" X 5' HIGH
STUMP IN PLACE, FACE CLOSED, CHAMPION TIMBERLANDS BTT)
12" FIR (1967) S01°E 22.8' (NOW 22" X 5' HIGH
STUMP IN PLACE, FACE CLOSED, CHAMPION TIMBERLANDS BTT)
8" BOWED FIR (1967) S56°W 19.4' (NOW 17" X 5' HIGH
STUMP IN PLACE, FACE CLOSED, CHAMPION TIMBERLANDS BTT)
15" FIR (1967) N64°W 37.5' (NOW 23" IN PLACE, FACE
CLOSED, CHAMPION TIMBERLANDS BTT)
36" FIR STUMP (REPORTED BY ODF, 1967, NO PREVIOUS RECORD)
S71°W 14.6' (NOW 36" X 3' HIGH ROTTED STUMP IN PLACE)
WPCP WEST 1.5' (NOW ROTTED AND FALLEN OVER)
METAL FENCE POST (NO RECORD) N30°W 1.0'

REWITNESSED

- WP N44°E 3.35' TO BASE
WP S50°E 3.25' TO BASE
WP S44°W 3.50' TO BASE
#1 (S89°51'W 40.46)
#2 (S89°53'29"W 2687.87')
#4 (S89°51'28"W 2687.24')
S89°54'02"W 2688.15'

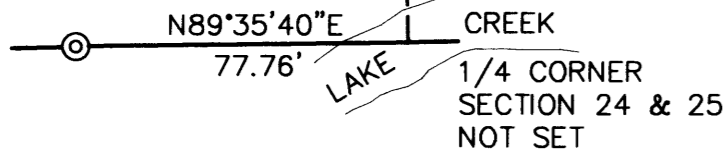
23|24
26|25

DETAIL

WITNESS CORNER FOUND

- RUPPERT P/C 1981 (IN PLACE)
38" MYRTLE (1981) N41 1/2°E 34.7'
(NOW 42" IN PLACE, YMLP)
39" MAPLE (1981) N40°35'W 37.0' (NOW
45" IN PLACE, FACE CLOSED)
BO NORTH END OF EAST GUARD
RAIL ON BRIDGE (1981) S82°23'W 66.5'
(NOW N68°W 64.2)

NOT TO SCALE



WITNESS CORNER ESTABLISHED

- SET OSDF P/C 34" IG
13" MYRTLE N63°E 34.1' WITH 12" X
AT DBH, SCRIBED BT AT BASE, BTT
12" MYRTLE S73°W 37.2' WITH 12" X
AT DBH, SCRIBED BT AT BASE, BTT
WPCP N35°W 3.40'

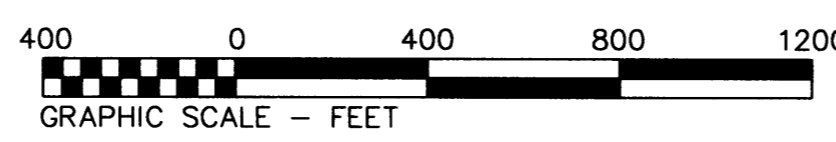
SURVEY FOR
STATE OF OREGON - DEPARTMENT OF FORESTRY
SW 1/4 AND THE SE 1/4 OF
SECTION 24, T.23 S., R.10 W., W.M.

DOUGLAS COUNTY, OREGON
LEICA TOTAL STATION SURVEY BY:
J. M. MCINTOSH, T. VAN VLEET AND R. C. HALL
DRAWN BY: T. VAN VLEET
APRIL 16, 2004
SCALE: 1" = 400'

LEGEND table listing symbols and their meanings: OSBF P/C, OSDF P/C, MONUMENT FOUND, MONUMENT SET, ORANGE CARSONITE MARKER, BEARING TREE, BEARING TREE TAG, YELLOW METAL LOCATION POSTER, 4" X 4" X 72" WHITE PAINTED CEDAR POST, TRUE BLAZED AND POSTED, ORANGE CARSONITE MARKER AND STATION, BEARING OBJECT, COURSE, IN GROUND, NEW CORNER SET, RECORD BEARING AND DISTANCE IN CHAINS, RECORD BEARING AND DISTANCE IN FEET.

I, JAMES M. MCINTOSH, HEREBY CERTIFY THAT THIS SURVEY WAS PREPARED USING HP CARTRIDGE NO. C4871A ON CONTINENTAL NO. JPC4M2 POLYESTER FILM.

James M. McIntosh DATE: 4-27-04



SURVEY BY:
REGISTERED PROFESSIONAL LAND SURVEYOR

OREGON
JULY 13, 1994
JAMES M. MCINTOSH
2103

JAMES M. MCINTOSH
63612 FIFTH ROAD
COOS BAY, OREGON

EXPIRATION DATE OF CERTIFICATE 12-31-04

MAP FILE M144-30

MAP FILE M144-30