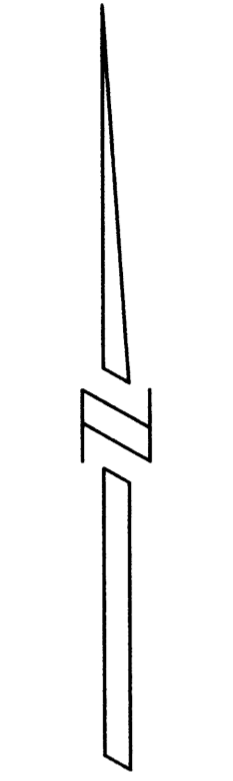


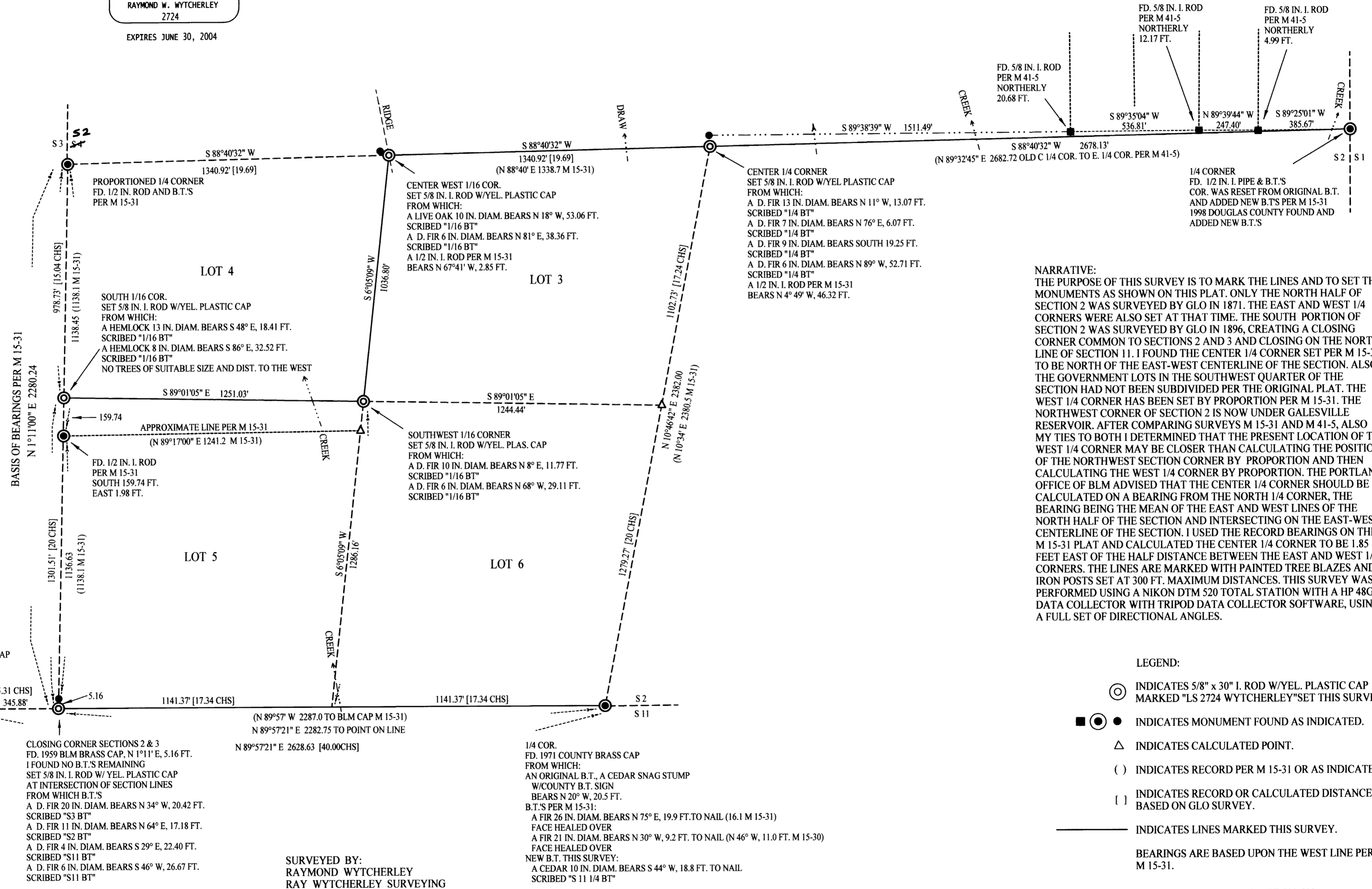
PLAT OF SURVEY
LOCATED IN
SOUTH 1/2 SEC. 2, T. 32 S., R. 4 W., W.M.
DOUGLAS COUNTY, OREGON
FEBRUARY 25, 2004

FILED
Date: 3/2/2004 By: JP
This survey consists of:
Map: M143-76
Narrative:
Corner Rpt:
DOUGLAS COUNTY
SURVEYOR

REGISTERED
PROFESSIONAL
LAND SURVEYOR
Raymond W. Wytcherley
OREGON
JULY 25, 1995
RAYMOND W. WYTCHERLEY
2724
EXPIRES JUNE 30, 2004



SCALE: 1" = 300'



NARRATIVE:
THE PURPOSE OF THIS SURVEY IS TO MARK THE LINES AND TO SET THE MONUMENTS AS SHOWN ON THIS PLAT. ONLY THE NORTH HALF OF SECTION 2 WAS SURVEYED BY GLO IN 1871. THE EAST AND WEST 1/4 CORNERS WERE ALSO SET AT THAT TIME. THE SOUTH PORTION OF SECTION 2 WAS SURVEYED BY GLO IN 1896, CREATING A CLOSING CORNER COMMON TO SECTIONS 2 AND 3 AND CLOSING ON THE NORTH LINE OF SECTION 11. I FOUND THE CENTER 1/4 CORNER SET PER M 15-31 TO BE NORTH OF THE EAST-WEST CENTERLINE OF THE SECTION. ALSO THE GOVERNMENT LOTS IN THE SOUTHWEST QUARTER OF THE SECTION HAD NOT BEEN SUBDIVIDED PER THE ORIGINAL PLAT. THE WEST 1/4 CORNER HAS BEEN SET BY PROPORTION PER M 15-31. THE NORTHWEST CORNER OF SECTION 2 IS NOW UNDER GALESVILLE RESERVOIR. AFTER COMPARING SURVEYS M 15-31 AND M 41-5, ALSO MY TIES TO BOTH I DETERMINED THAT THE PRESENT LOCATION OF THE WEST 1/4 CORNER MAY BE CLOSER THAN CALCULATING THE POSITION OF THE NORTHWEST SECTION CORNER BY PROPORTION AND THEN CALCULATING THE WEST 1/4 CORNER BY PROPORTION. THE PORTLAND OFFICE OF BLM ADVISED THAT THE CENTER 1/4 CORNER SHOULD BE CALCULATED ON A BEARING FROM THE NORTH 1/4 CORNER, THE BEARING BEING THE MEAN OF THE EAST AND WEST LINES OF THE NORTH HALF OF THE SECTION AND INTERSECTING ON THE EAST-WEST CENTERLINE OF THE SECTION. I USED THE RECORD BEARINGS ON THE M 15-31 PLAT AND CALCULATED THE CENTER 1/4 CORNER TO BE 1.85 FEET EAST OF THE HALF DISTANCE BETWEEN THE EAST AND WEST 1/4 CORNERS. THE LINES ARE MARKED WITH PAINTED TREE BLAZES AND IRON POSTS SET AT 300 FT. MAXIMUM DISTANCES. THIS SURVEY WAS PERFORMED USING A NIKON DTM 520 TOTAL STATION WITH A HP 48GX DATA COLLECTOR WITH TRIPOD DATA COLLECTOR SOFTWARE, USING A FULL SET OF DIRECTIONAL ANGLES.

- LEGEND:
- ⊙ INDICATES 5/8" x 30" I. ROD W/YEL. PLASTIC CAP MARKED "LS 2724 WYTCHERLEY" SET THIS SURVEY.
 - INDICATES MONUMENT FOUND AS INDICATED.
 - △ INDICATES CALCULATED POINT.
 - () INDICATES RECORD PER M 15-31 OR AS INDICATED.
 - [] INDICATES RECORD OR CALCULATED DISTANCE BASED ON GLO SURVEY.
 - INDICATES LINES MARKED THIS SURVEY.

BEARINGS ARE BASED UPON THE WEST LINE PER M 15-31.
PLOTTED BY A HP DESIGNJET 500 ON CONTINENTAL IMAGING # JPC4M2 POLYESTER FILM WITH HP CARTRIDGE # 4844A.

SURVEYED FOR:
SWANSON GROUP, INC
P.O. BOX 250
2695 GLENDALE VALLEY RD.
GLENDALE, OR 97442

SURVEYED BY:
RAYMOND WYTCHERLEY
RAY WYTCHERLEY SURVEYING
P.O. BOX 888
GLENDALE, OR 97442
541-832-3286
541-476-3319

1/4 COR.
FD. 1971 COUNTY BRASS CAP
FROM WHICH:
AN ORIGINAL B.T., A CEDAR SNAG STUMP
W/COUNTY B.T. SIGN
BEARS N 20° W, 20.5 FT.
B.T.'S PER M 15-31:
A FIR 26 IN. DIAM. BEARS N 75° E, 19.9 FT. TO NAIL (16.1 M 15-31)
FACE HEALED OVER
A FIR 21 IN. DIAM. BEARS N 30° W, 9.2 FT. TO NAIL (N 46° W, 11.0 FT. M 15-30)
FACE HEALED OVER
NEW B.T. THIS SURVEY:
A CEDAR 10 IN. DIAM. BEARS S 44° W, 18.8 FT. TO NAIL
SCRIBED "S 11 1/4 BT"