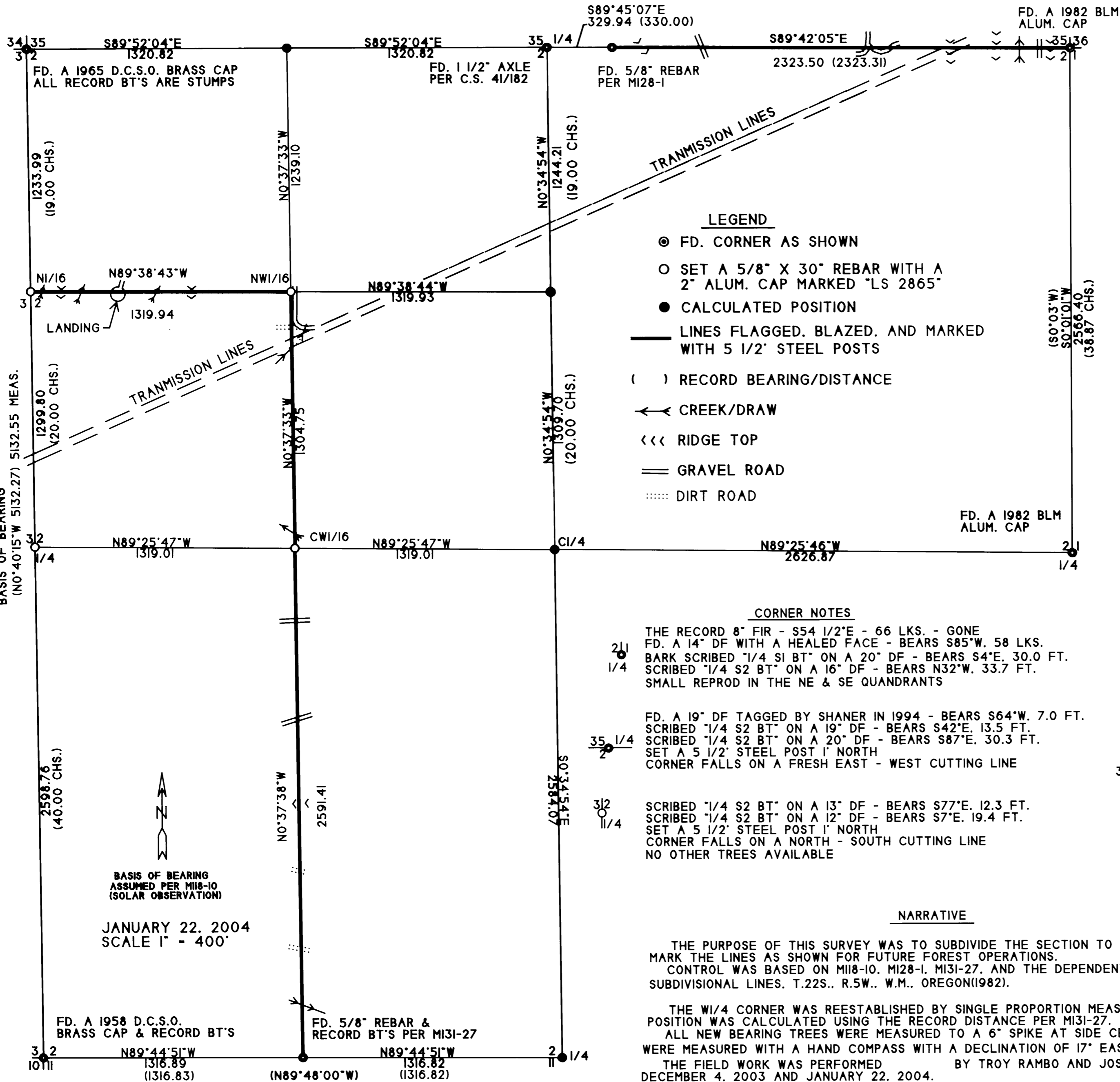


BOUNDARY SURVEY
 LOCATED IN SECTION 2, T.22S., R.5W., W.M.
 DOUGLAS COUNTY, OREGON

FILED
 Date: 3/1/2004 By: TP
 This survey consists of:
 Map: M 143-75
 Narrative:
 Corner Rpt:
 DOUGLAS COUNTY
 SURVEYOR



- LEGEND**
- ⊙ FD. CORNER AS SHOWN
 - SET A 5/8" X 30" REBAR WITH A 2" ALUM. CAP MARKED "LS 2865"
 - CALCULATED POSITION
 - LINES FLAGGED, BLAZED, AND MARKED WITH 5 1/2" STEEL POSTS
 - () RECORD BEARING/DISTANCE
 - ← CREEK/DRAW
 - <<< RIDGE TOP
 - == GRAVEL ROAD
 - ⋯ DIRT ROAD

- CORNER NOTES**
- 21/4
1/4 THE RECORD 8" FIR - S54 1/2"E - 66 LKS. - GONE
 FD. A 14" DF WITH A HEALED FACE - BEARS S85"W. 58 LKS.
 BARK SCRIBED "1/4 SI BT" ON A 20" DF - BEARS S4"E. 30.0 FT.
 SCRIBED "1/4 S2 BT" ON A 16" DF - BEARS N32"W. 33.7 FT.
 SMALL REPROD IN THE NE & SE QUADRANTS
 - 35/4
2/4 FD. A 19" DF TAGGED BY SHANER IN 1994 - BEARS S64"W. 7.0 FT.
 SCRIBED "1/4 S2 BT" ON A 19" DF - BEARS S42"E. 13.5 FT.
 SCRIBED "1/4 S2 BT" ON A 20" DF - BEARS S87"E. 30.3 FT.
 SET A 5 1/2" STEEL POST 1' NORTH
 CORNER FALLS ON A FRESH EAST - WEST CUTTING LINE
 - 31/2
11/4 SCRIBED "1/4 S2 BT" ON A 13" DF - BEARS S77"E. 12.3 FT.
 SCRIBED "1/4 S2 BT" ON A 12" DF - BEARS S7"E. 19.4 FT.
 SET A 5 1/2" STEEL POST 1' NORTH
 CORNER FALLS ON A NORTH - SOUTH CUTTING LINE
 NO OTHER TREES AVAILABLE

- CWI/16 SCRIBED "CWI/16 BT" ON A 14" DF - BEARS S10"E. 4.4 FT.
 SCRIBED "CWI/16 BT" ON A 13" DF - BEARS N36"W. 14.7 FT.
- NWI/16 SCRIBED "X BT" ON A 6" DF - BEARS N4"E. 8.2 FT.
 SCRIBED "X BT" ON A 6" DF - BEARS S39"W. 23.4 FT.
- NI/16
31/2 SCRIBED "NI/16 BT" ON A 15" GF - BEARS S10"W. 23.7 FT.
 BARK SCRIBED "NI/16 BT" ON A 38" DF - BEARS N2"E. 24.6 FT.
 TO THE HEAD OF A 6" SPIKE AT THE BASE OF THE SCRIBES.

NARRATIVE

THE PURPOSE OF THIS SURVEY WAS TO SUBDIVIDE THE SECTION TO ESTABLISH THE CORNERS AND MARK THE LINES AS SHOWN FOR FUTURE FOREST OPERATIONS.
 CONTROL WAS BASED ON M18-10, M128-1, M131-27, AND THE DEPENDENT RESURVEY, PORTION OF SUBDIVISIONAL LINES, T.22S., R.5W., W.M., OREGON(1982).
 THE W1/4 CORNER WAS REESTABLISHED BY SINGLE PROPORTION MEASUREMENT. THE S1/4 CORNER POSITION WAS CALCULATED USING THE RECORD DISTANCE PER M131-27.
 ALL NEW BEARING TREES WERE MEASURED TO A 6" SPIKE AT SIDE CENTER BASE. BEARINGS WERE MEASURED WITH A HAND COMPASS WITH A DECLINATION OF 17" EAST.
 THE FIELD WORK WAS PERFORMED BY TROY RAMBO AND JOSH WALLMAN BETWEEN DECEMBER 4, 2003 AND JANUARY 22, 2004.

SURVEY FOR:
 BEAR CREEK TIMBER COMPANY
 P.O. BOX 47
 DRAIN, OR 97435

SURVEY BY:
 MULKINS & RAMBO, LLC
 P.O. BOX 809
 NORTH BEND, OR 97459

REGISTERED
 PROFESSIONAL
 LAND SURVEYOR
 Troy Rambo
 OREGON
 JULY 14, 1998
 TROY J. RAMBO
 2865
 EXPIRES 12-31-04

MAP FILE M 143-75

MAP FILE M 143-75